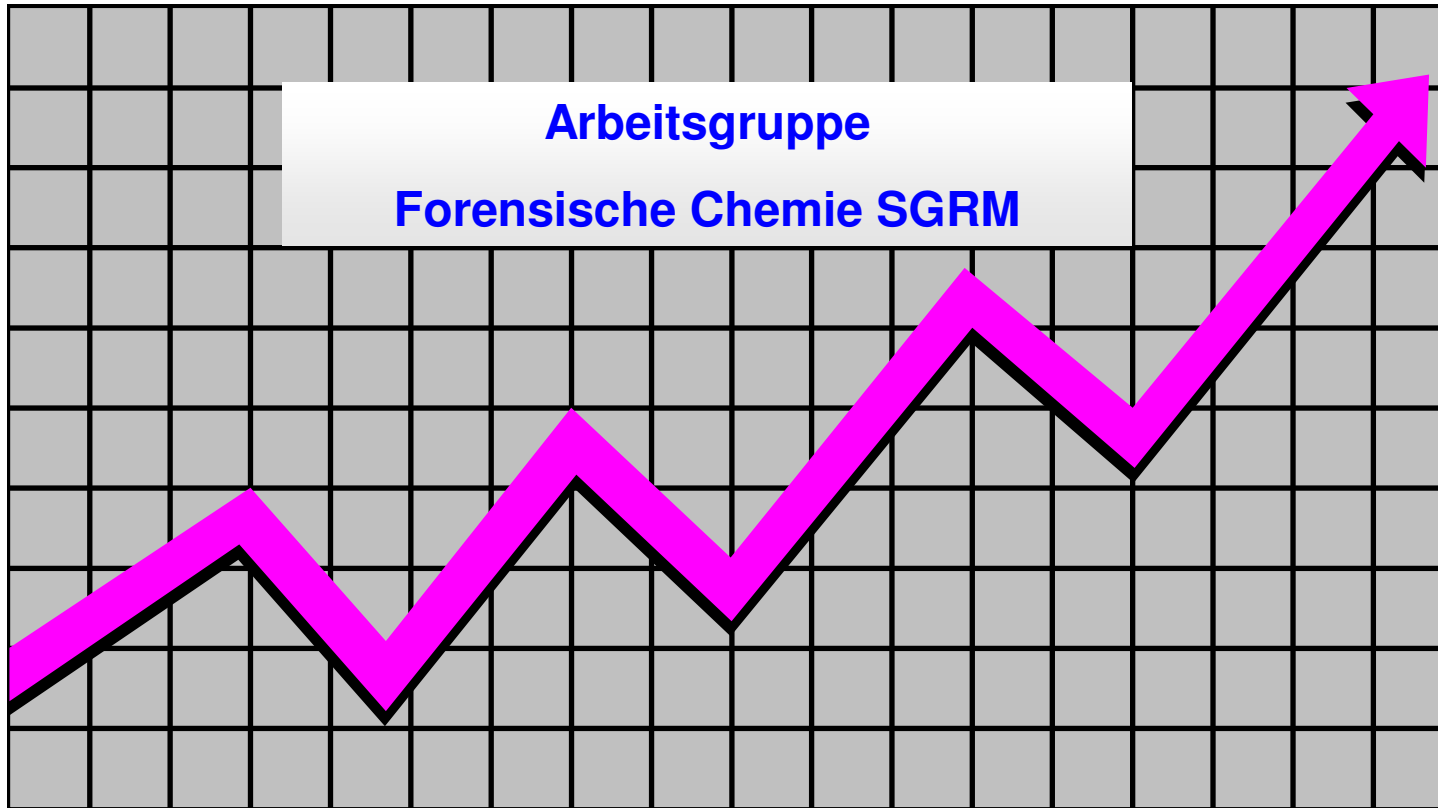


# Betäubungsmittelstatistik 2015

## Cocain & Heroin Gehaltswerte



Auswertung: M.T. Pinorini-Godly, *Fondazione Alpina per le Scienze della Vita, Istituto alpino di chimica e di tossicologia*,  
CH-6718 Olivone; e-mail: [maria.teresa.pinorini@fasv.ch](mailto:maria.teresa.pinorini@fasv.ch)

# Cocain-Base 2015

## Mittlere Betäubungsmittelgehalte

Einzelkonfiskat- grösse	Anzahl Untersuchungen	Mittelwert (%) Base	Standard- abweichung (%)
< 1	<b>224</b> (281)	<b>42</b> (36)	<b>± 21</b> (± 18)
1 < 10	<b>384</b> (427)	<b>44</b> (38)	<b>± 20</b> (± 19)
10 < 100	<b>292</b> (296)	<b>47</b> (43)	<b>± 21</b> (± 21)
100 < 1000	<b>143</b> (87)	<b>56</b> (51)	<b>± 21</b> (± 21)
> 1000	<b>22</b> (13)	<b>73</b> (70)	<b>± 14</b> (± 14)

(2014)



# Cocain-HCl 2015

## Mittlere Betäubungsmittelgehalte

Einzelkonfiskat- grösse	Anzahl Untersuchungen	Mittelwert (%) HCl	Standard- abweichung (%)
< 1	<b>224</b> (281)	<b>47</b> (40)	<b>± 24</b> (± 20)
1 < 10	<b>384</b> (427)	<b>48</b> (42)	<b>± 22</b> (± 21)
10 < 100	<b>292</b> (296)	<b>52</b> (47)	<b>± 23</b> (± 23)
100 < 1000	<b>143</b> (87)	<b>62</b> (56)	<b>± 24</b> (± 23)
> 1000	<b>22</b> (13)	<b>81</b> (77)	<b>± 15</b> (± 15)

(2014)



# Heroin-Base 2015

## Mittlere Betäubungsmittelgehalte

Einzelkonfiskat- grösse	Anzahl Untersuchungen	Mittelwert (%) Base	Standard- abweichung (%)
< 1	<b>63</b> (80)	<b>19</b> (18)	<b>± 18</b> (± 12)
1 < 10	<b>510</b> (656)	<b>19</b> (18)	<b>± 12</b> (± 9.9)
10 < 100	<b>275</b> (304)	<b>25</b> (24)	<b>± 16</b> (± 15)
100 < 1000	<b>147</b> (205)	<b>35</b> (35)	<b>± 17</b> (± 18)
> 1000	<b>3</b> (6)	<b>61</b> (38)	<b>± 9.6</b> (± 26)



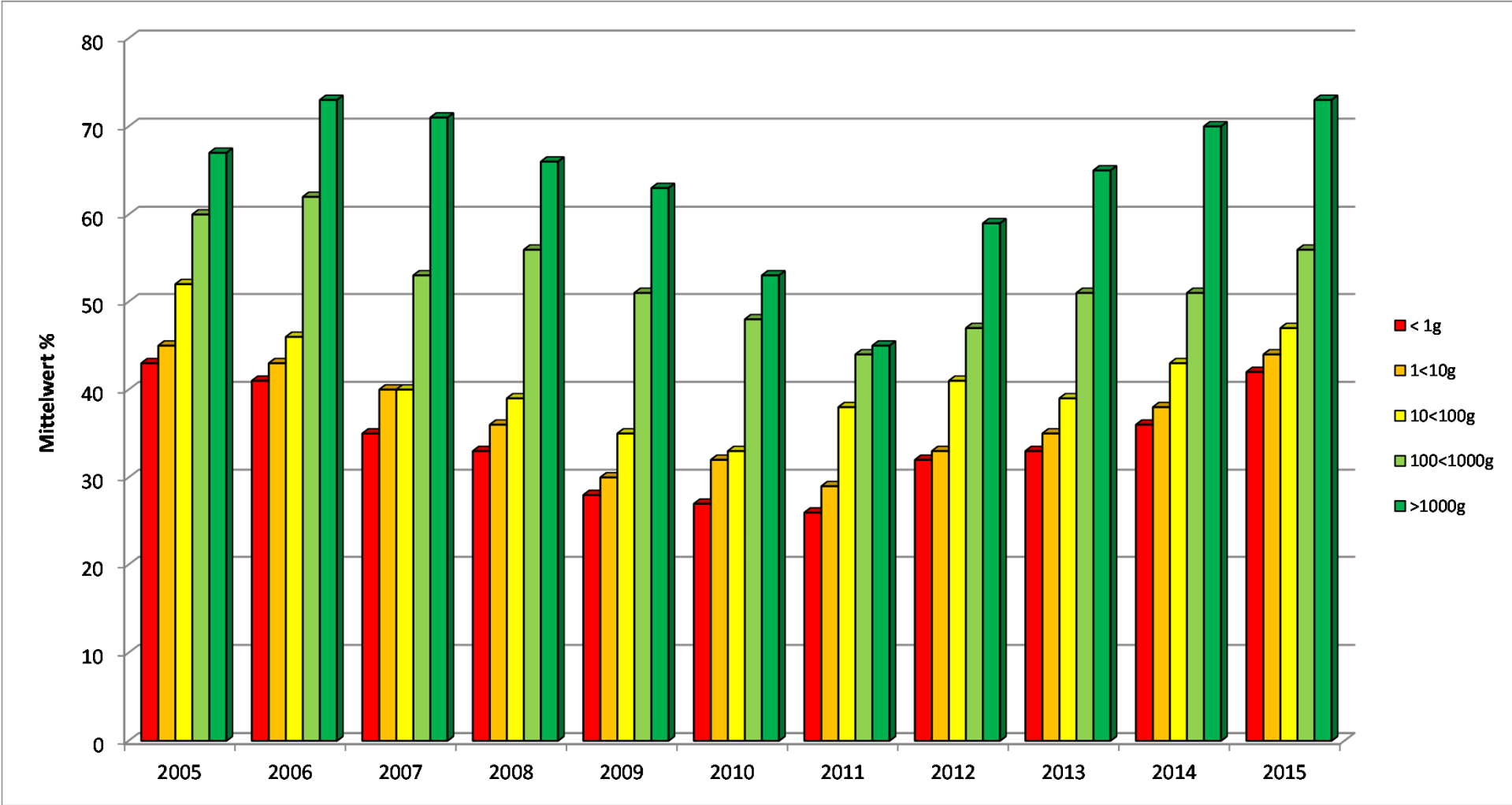
# Heroin-HCl 2015

## Mittlere Betäubungsmittelgehalte

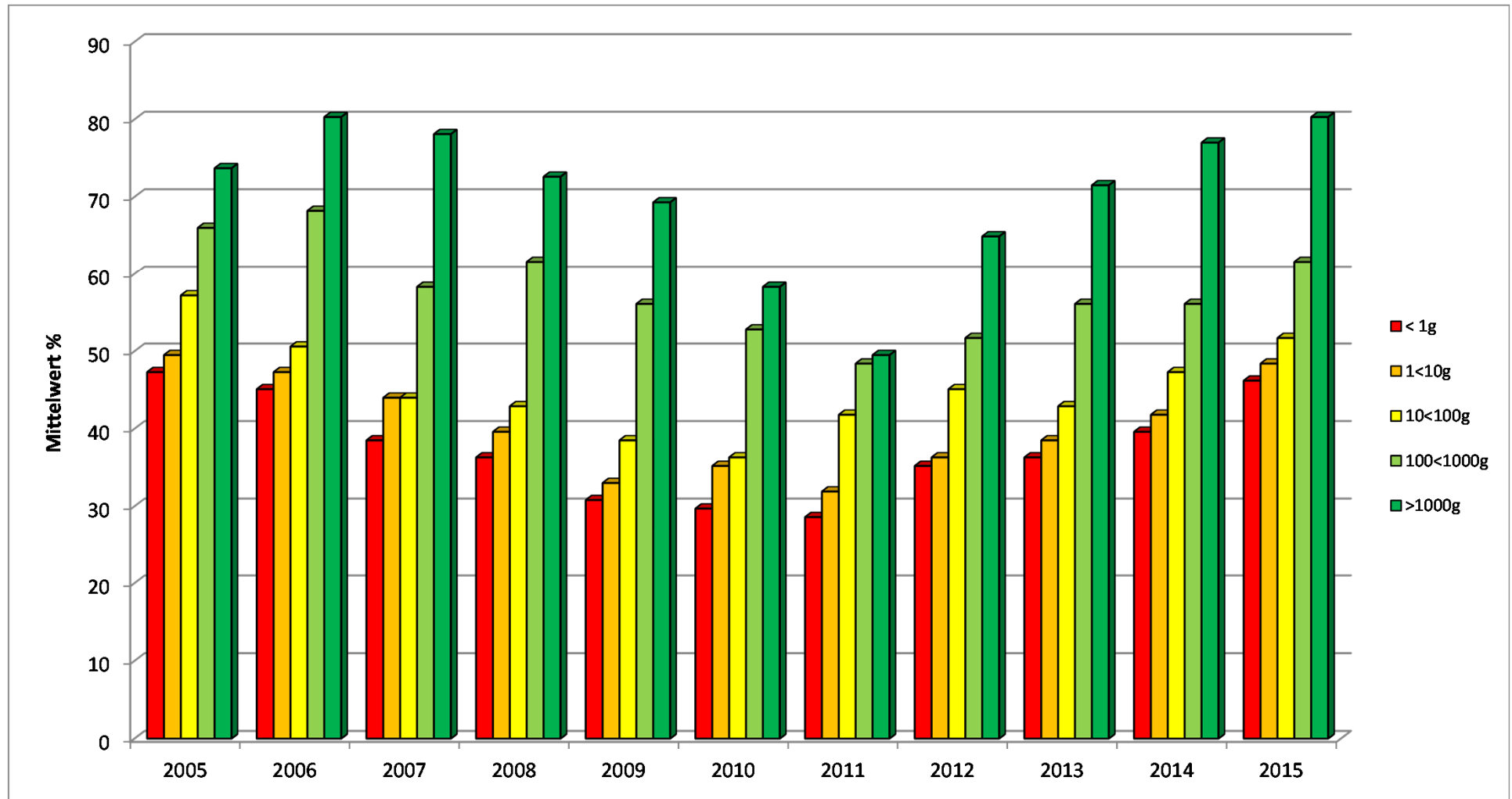
Einzelkonfiskat- grösse	Anzahl Untersuchungen	Mittelwert (%) HCl	Standard- abweichung (%)
< 1	<b>63</b> (80)	<b>21</b> (20)	<b>± 20</b> (± 13)
1 < 10	<b>510</b> (656)	<b>21</b> (20)	<b>± 13</b> (± 11)
10 < 100	<b>275</b> (304)	<b>27</b> (26)	<b>± 18</b> (± 17)
100 < 1000	<b>147</b> (205)	<b>38</b> (39)	<b>± 18</b> (± 20)
> 1000	<b>3</b> (6)	<b>67</b> (42)	<b>± 11</b> (± 29)



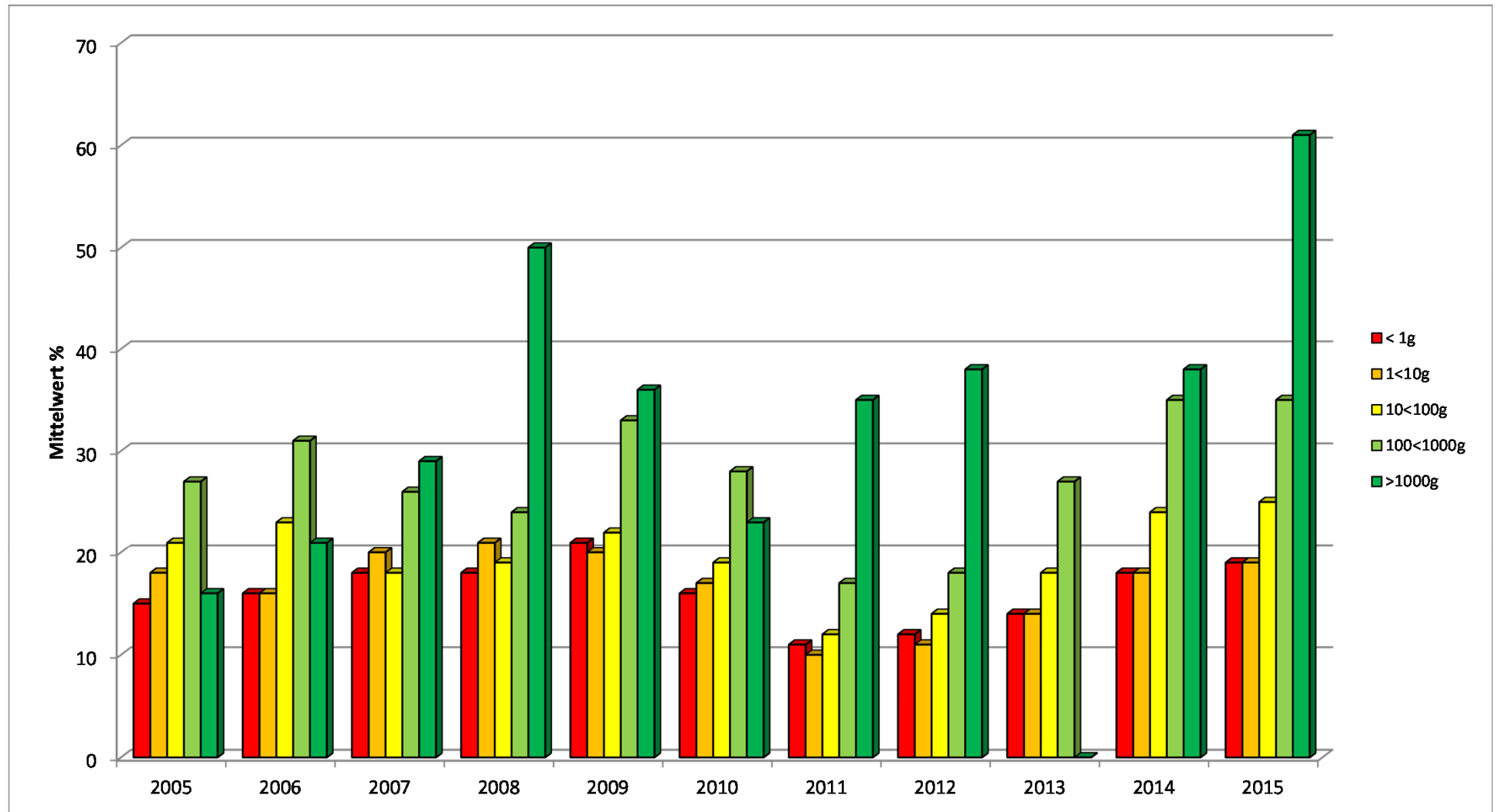
# Cocain-Base Gehalt 2005 – 2015



# Cocain-HCl Gehalt 2005 – 2015

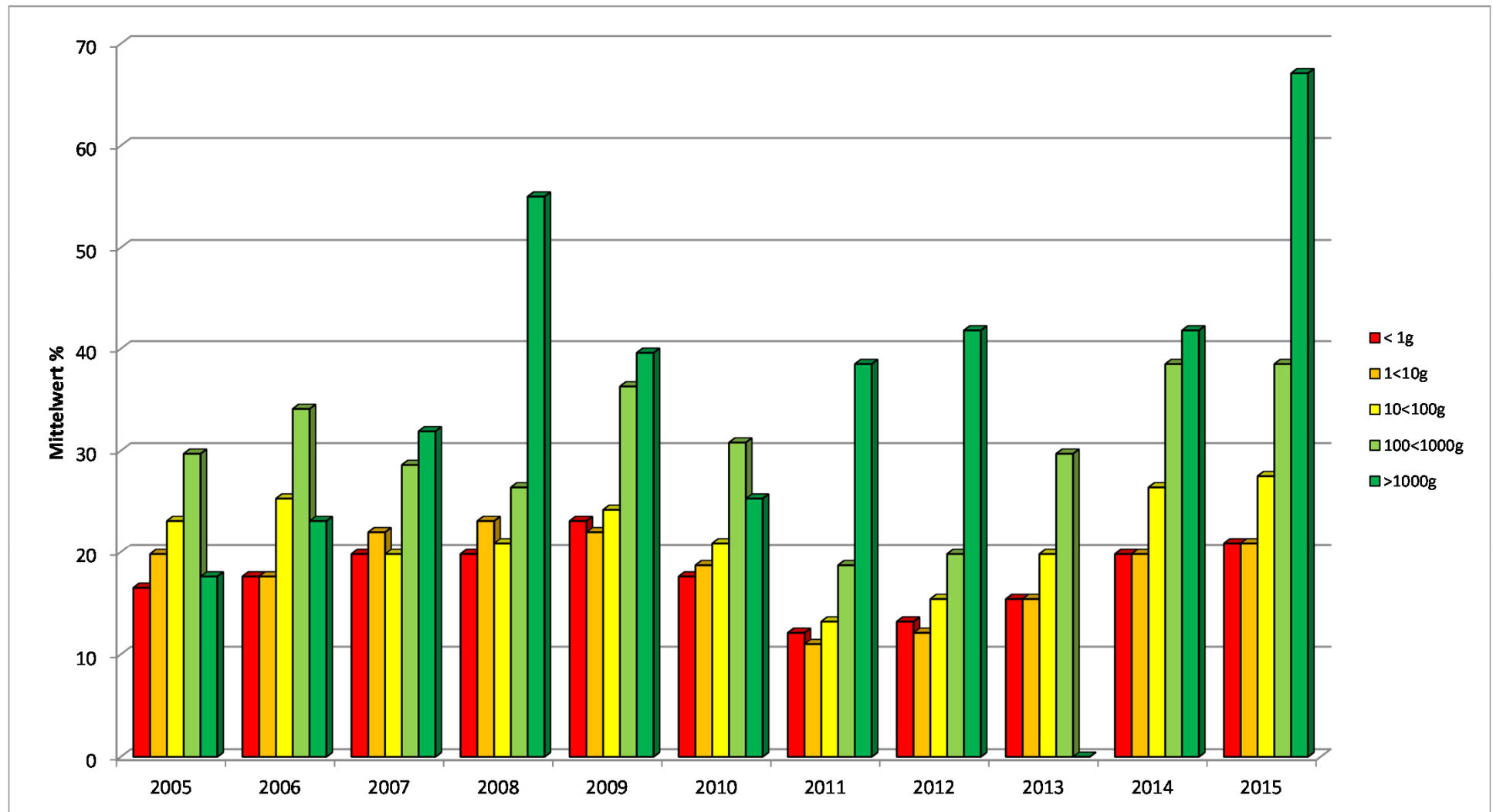


# Heroin-Base Gehalt 2005 – 2015

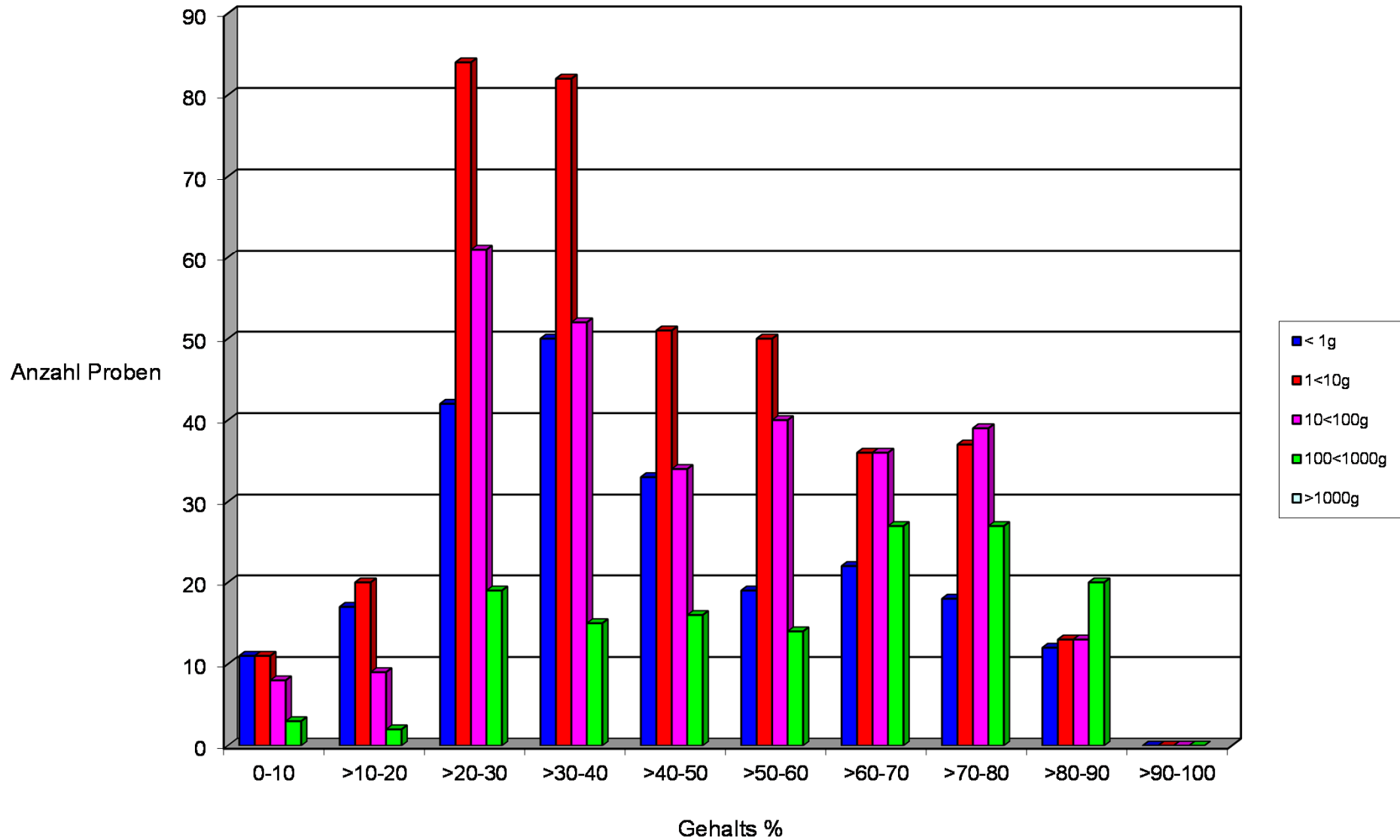




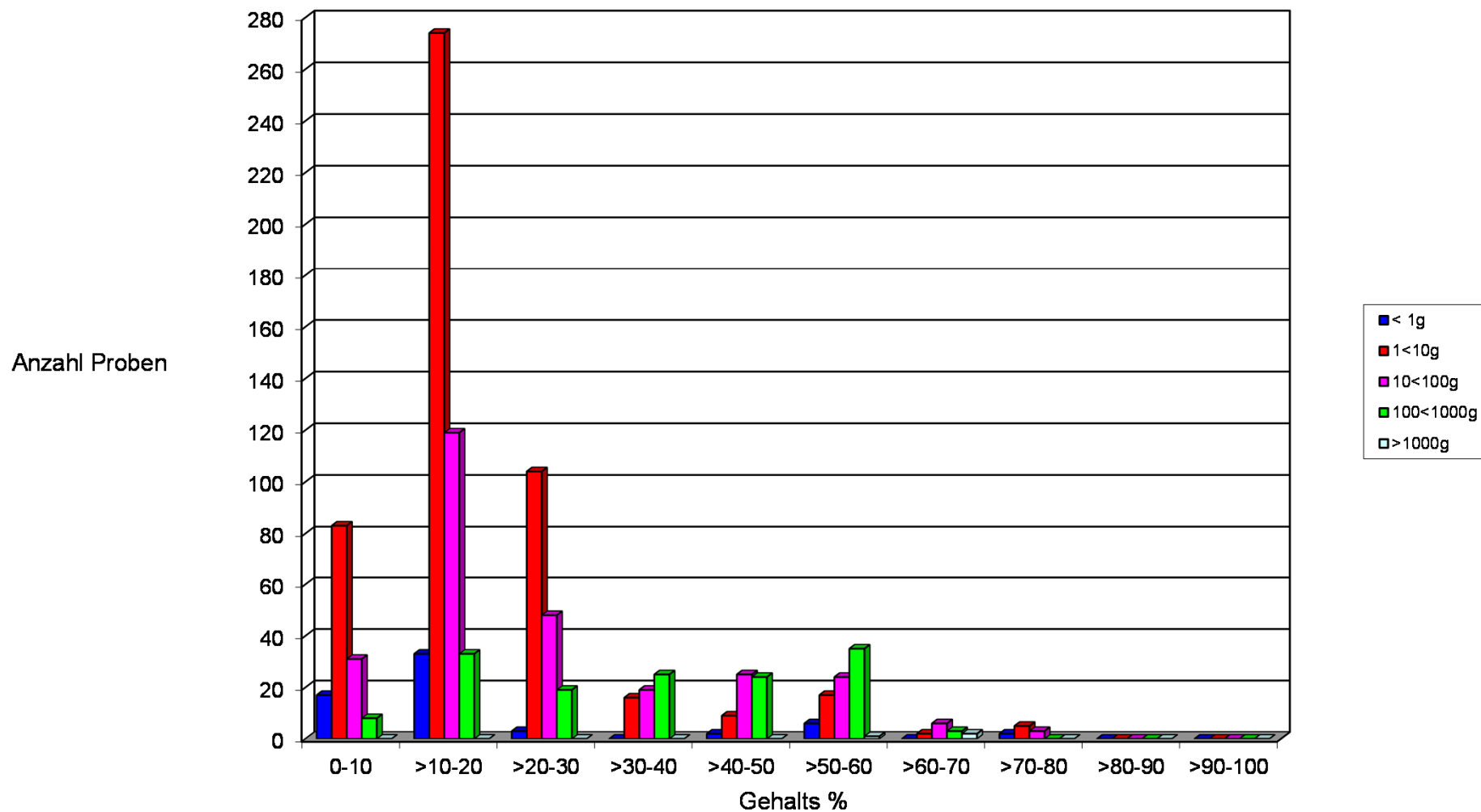
# Heroin-HCl Gehalt 2005 – 2015



# Cocain-Base Detailübersicht 2015



# Heroin-Base Detailübersicht 2015



# Cocain-Base Gehaltswerte 2015

Mengenbereich Statistischer Wert	< 1 g	< 1 – 10 g	< 10 - 100 g	< 100 - 1000 g	> 1000 g
<b>Gesamtgewicht [g]</b> Total: 477'346 (103'001)	<b>2959</b> (685)	<b>18'239</b> (13'992)	<b>20'386</b> (19'141)	<b>70'338</b> (46'198)	<b>365'424</b> (22'985)
<b>Anzahl Untersuchungen</b> Total: 1065 (1104)	<b>224</b> (281)	<b>384</b> (427)	<b>292</b> (296)	<b>143</b> (87)	<b>22</b> (13)
<b>Median [%]</b>	<b>38</b> (32)	<b>40</b> (32)	<b>47</b> (41)	<b>61</b> (49)	<b>77</b> (71)
<b>Oberes Quartil (75 %)</b>	<b>58</b> (46)	<b>59</b> (51)	<b>63</b> (62)	<b>74</b> (69)	<b>82</b> (81)
<b>Unteres Quartil (25 %)</b>	<b>28</b> (24)	<b>29</b> (24)	<b>30</b> (27)	<b>36</b> (34)	<b>65</b> (66)
<b>Quantil (84 %)</b>	<b>67</b> (53)	<b>68</b> (61)	<b>71</b> (68)	<b>78</b> (79)	<b>84</b> (83)
<b>Quantil (16 %)</b>	<b>23</b> (20)	<b>25</b> (20)	<b>26</b> (21)	<b>30</b> (28)	<b>60</b> (57)



# Cocain-HCl Gehaltswerte 2015

Mengenbereich Statistischer Wert	< 1 g	< 1 – 10 g	< 10 - 100 g	< 100 - 1000 g	> 1000 g
<b>Gesamtgewicht [g]</b> Total: 477'346 (103'001)	<b>2959</b> (685)	<b>18'239</b> (13'992)	<b>20'386</b> (19'141)	<b>70'338</b> (46'198)	<b>365'424</b> (22'985)
<b>Anzahl Untersuchungen</b> Total: 1065 (1104)	<b>224</b> (281)	<b>384</b> (427)	<b>292</b> (296)	<b>143</b> (87)	<b>22</b> (13)
<b>Median [%]</b>	<b>42</b> (35)	<b>44</b> (35)	<b>52</b> (45)	<b>67</b> (54)	<b>86</b> (78)
<b>Oberes Quartil (75 %)</b>	<b>64</b> (51)	<b>65</b> (56)	<b>70</b> (68)	<b>82</b> (76)	<b>92</b> (89)
<b>Unteres Quartil (25 %)</b>	<b>31</b> (26)	<b>32</b> (26)	<b>33</b> (30)	<b>40</b> (37)	<b>72</b> (73)
<b>Quantil (84 %)</b>	<b>75</b> (58)	<b>75</b> (67)	<b>79</b> (75)	<b>86</b> (87)	<b>94</b> (91)
<b>Quantil (16 %)</b>	<b>26</b> (22)	<b>28</b> (22)	<b>29</b> (23)	<b>33</b> (31)	<b>66</b> (63)



# Heroin-Base Gehaltswerte 2015

Mengenbereich Statistischer Wert	< 1 g	< 1 – 10 g	< 10 - 100 g	< 100 - 1000 g	> 1000 g
<b>Gesamtgewicht [g]</b> Total: 97'713 (154'576)	<b>219</b> (50)	<b>16'618</b> (17'488)	<b>17'050</b> (19'632)	<b>48'062</b> (96'026)	<b>15764</b> (21'380)
<b>Anzahl Untersuchungen</b> Total: 998 (1251)	<b>63</b> (80)	<b>510</b> (656)	<b>275</b> (304)	<b>147</b> (205)	<b>3</b> (6)
<b>Median [%]</b>	<b>14</b> (16)	<b>16</b> (16)	<b>18</b> (17)	<b>36</b> (33)	<b>62</b> (46)
<b>Oberes Quartil (75 %)</b>	<b>17</b> (20)	<b>22</b> (21)	<b>33</b> (32)	<b>51</b> (50)	<b>66</b> (54)
<b>Unteres Quartil (25 %)</b>	<b>9.1</b> (11)	<b>12</b> (11)	<b>13</b> (13)	<b>19</b> (17)	<b>56</b> (16)
<b>Quantil (84 %)</b>	<b>27</b> (29)	<b>24</b> (25)	<b>45</b> (42)	<b>54</b> (56)	<b>67</b> (57)
<b>Quantil (16 %)</b>	<b>7.0</b> (8.4)	<b>10</b> (9.4)	<b>11</b> (10)	<b>14</b> (14)	<b>54</b> (8.3)

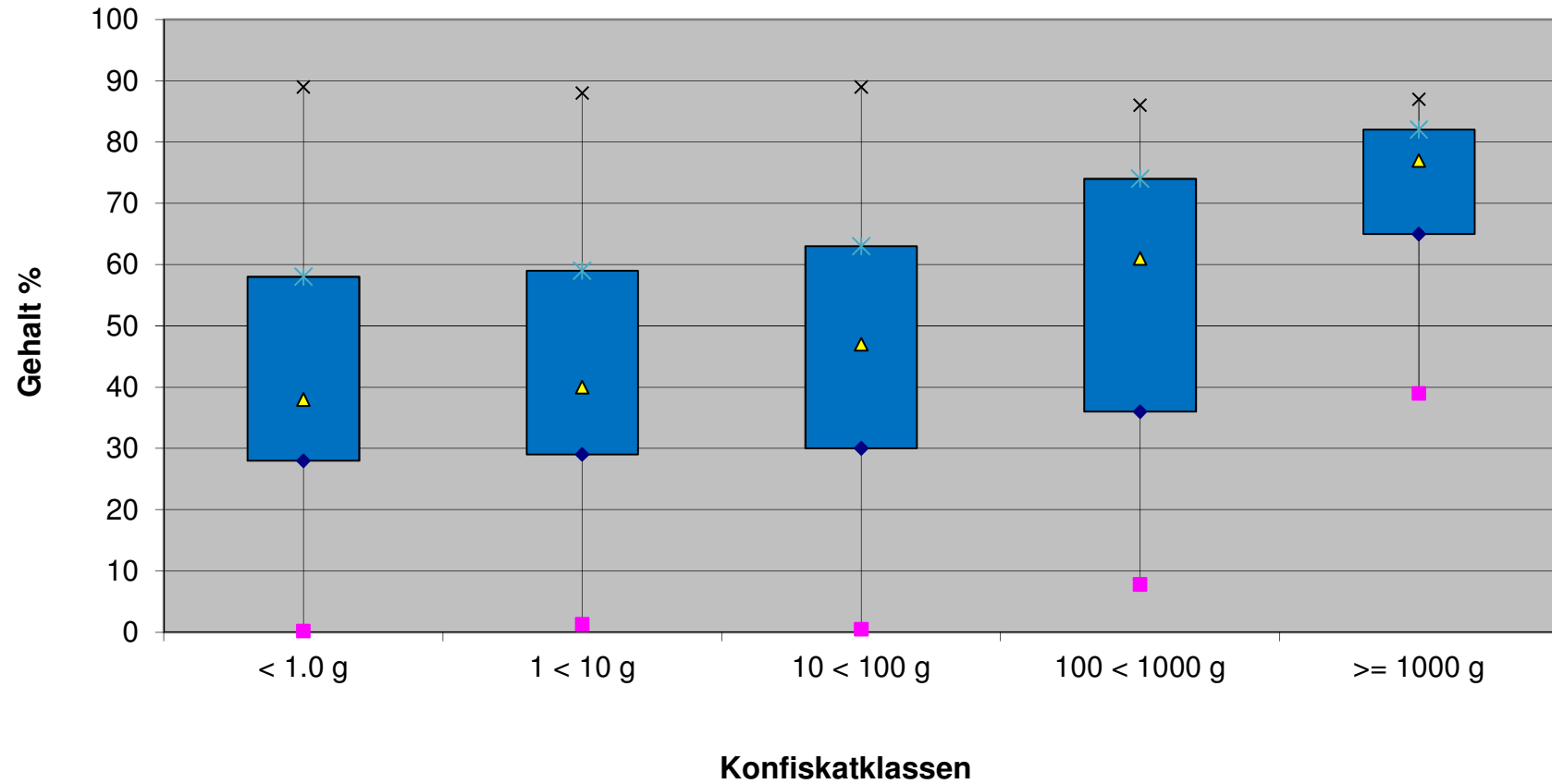


# Heroin-HCl Gehaltswerte 2015

Mengenbereich Statistischer Wert	< 1 g	< 1 – 10 g	< 10 - 100 g	< 100 - 1000 g	> 1000 g
<b>Gesamtgewicht [g]</b> Total: 97'713 (154'576)	<b>219</b> (50)	<b>16'618</b> (17'488)	<b>17'050</b> (19'632)	<b>48'062</b> (96'026)	<b>15764</b> (21'380)
<b>Anzahl Untersuchungen</b> Total: 998 (1251)	<b>63</b> (80)	<b>510</b> (656)	<b>275</b> (304)	<b>147</b> (205)	<b>3</b> (6)
<b>Median [%]</b>	<b>15</b> (18)	<b>18</b> (18)	<b>20</b> (19)	<b>40</b> (36)	<b>68</b> (51)
<b>Oberes Quartil (75 %)</b>	<b>19</b> (22)	<b>24</b> (23)	<b>36</b> (35)	<b>56</b> (55)	<b>72</b> (59)
<b>Unteres Quartil (25 %)</b>	<b>10</b> (12)	<b>13</b> (12)	<b>14</b> (14)	<b>20</b> (19)	<b>62</b> (18)
<b>Quantil (84 %)</b>	<b>30</b> (32)	<b>27</b> (28)	<b>50</b> (46)	<b>59</b> (62)	<b>74</b> (63)
<b>Quantil (16 %)</b>	<b>7.7</b> (9.2)	<b>11</b> (10)	<b>13</b> (11)	<b>16</b> (15)	<b>60</b> (9.1)

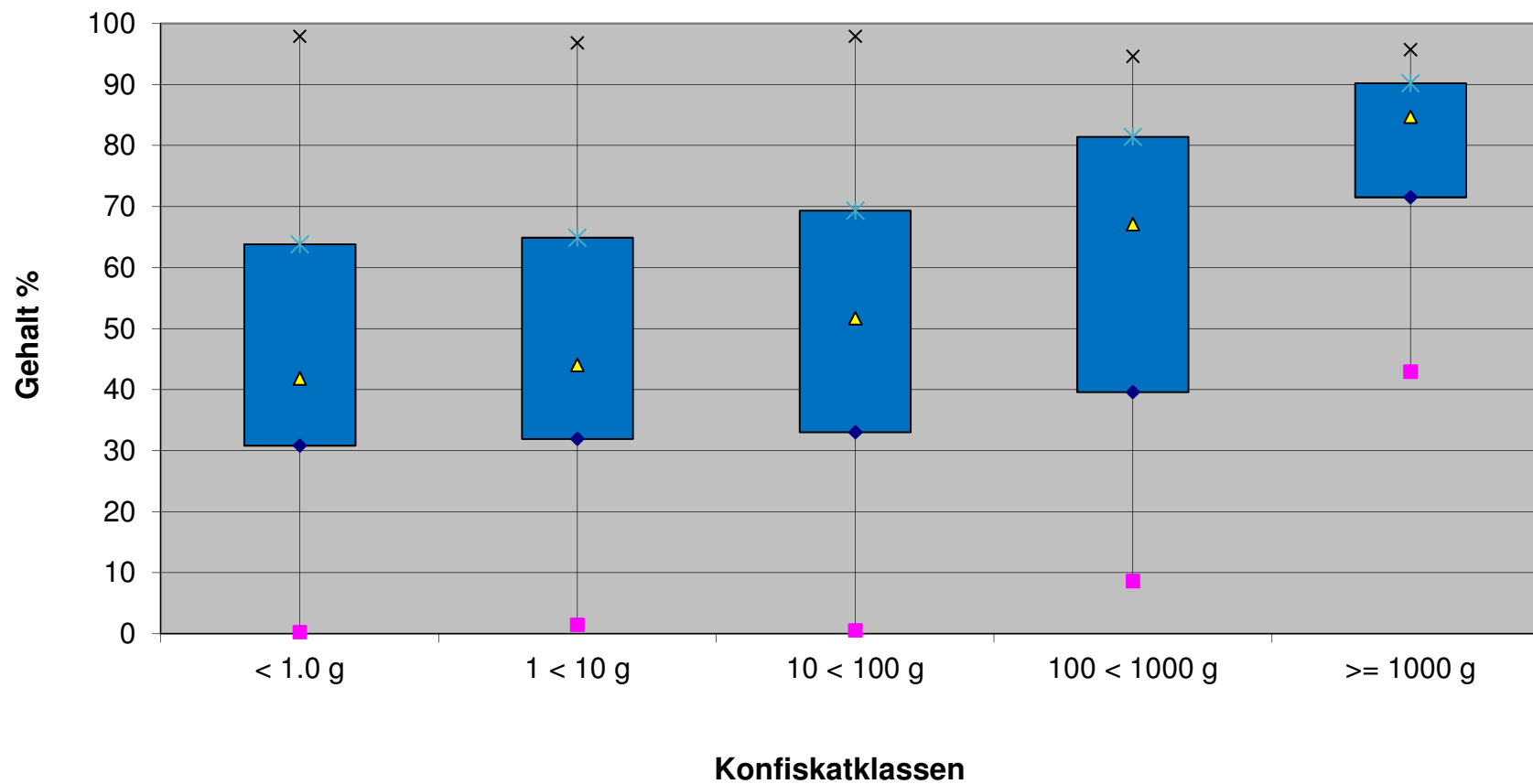


# Cocain-Base Gehaltswerte 2015

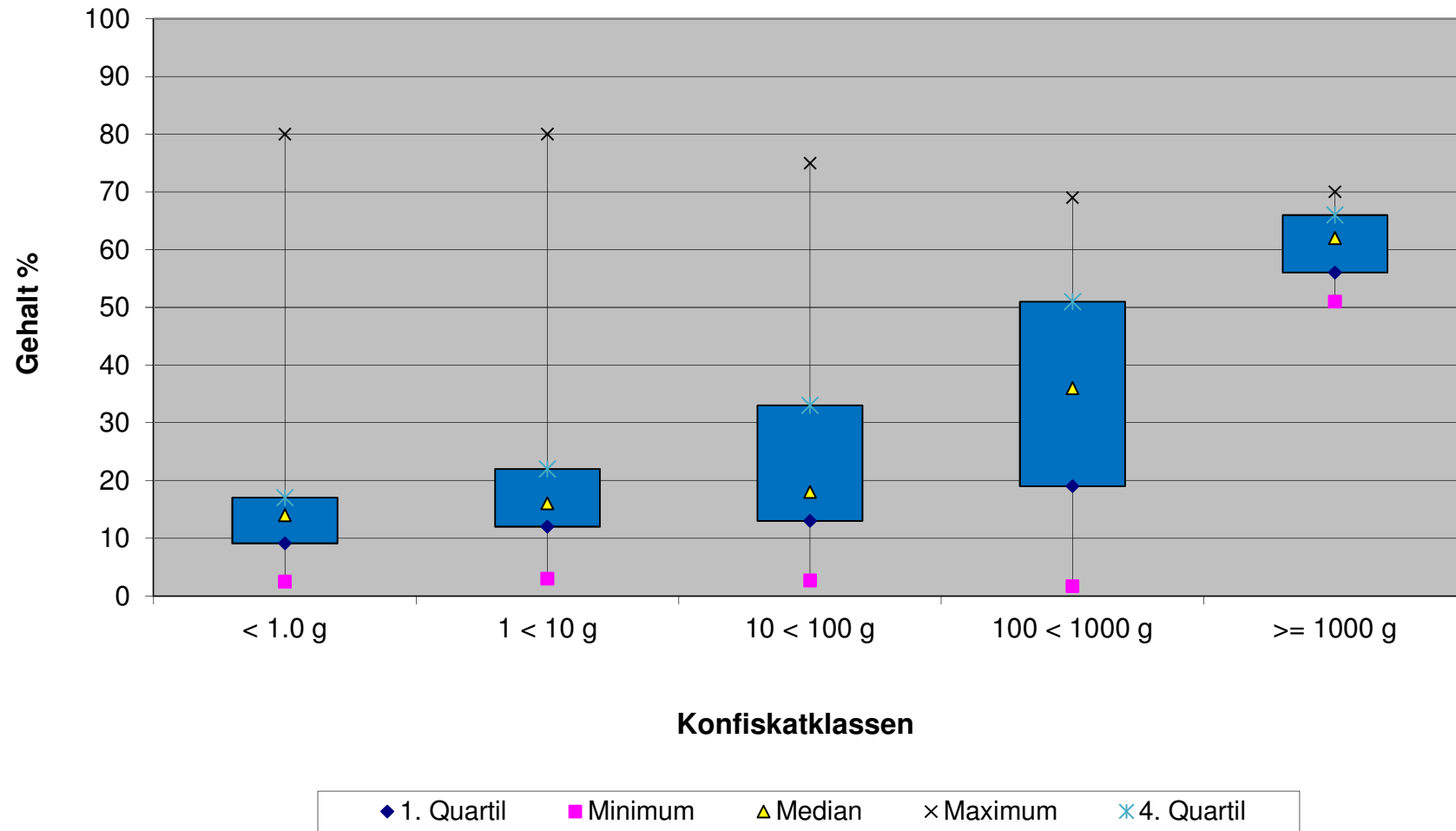




# Cocain-HCl Gehaltswerte 2015



# Heroin-Base Gehaltswerte 2015



# Heroin-HCl Gehaltswerte 2015

