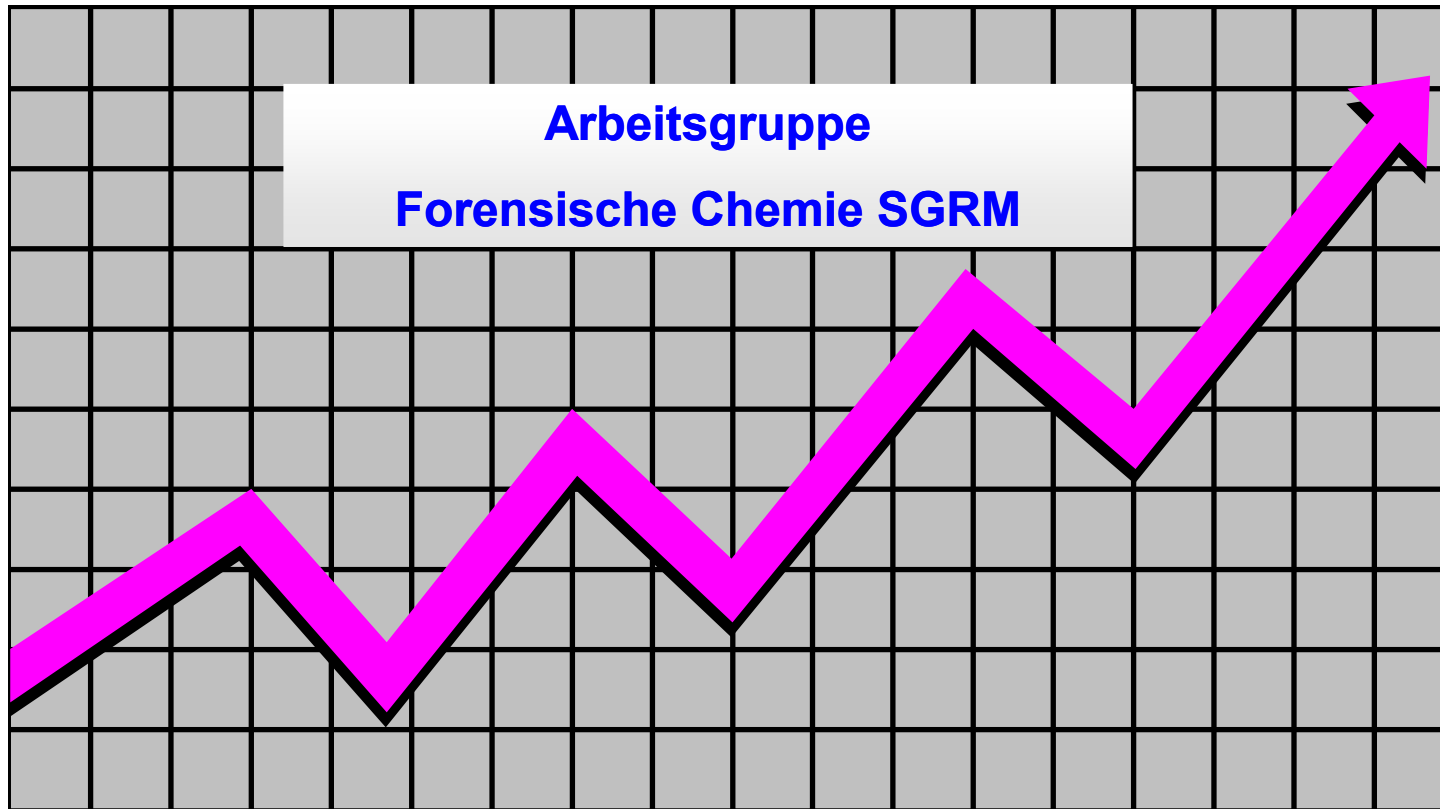


# Betäubungsmittelstatistik 2011

## Cocain & Heroin Gehaltswerte



Auswertung: M.T. Pinorini-Godly, Fondazione Alpina per le Scienze della Vita, Istituto alpino di chimica e di tossicologia,  
CH-6718 Olivone; e-mail: pinorini.alpisti@bluewin.ch

**Gruppe Forensische Chemie SGRM**

# Cocain Base 2011 (SGRM)

## Mittlere Betäubungsmittelgehalte

Einzelkonfiskat- grösse	Anzahl Untersuchungen	Mittelwert (%) Base	Standard- abweichung (%)
< 1	252 (230)	26 (27)	± 12 (± 12)
1 < 10	453 (421)	29 (32)	± 16 (± 17)
10 < 100	295 (252)	38 (33)	± 20 (± 19)
100 < 1000	147 (135)	44 (48)	± 26 (± 22)
> 1000	8 (32)	45 (53)	± 24 (± 22)

(2010)



# Cocain HCl 2011 (SGRM)

## Mittlere Betäubungsmittelgehalte

Einzelkonfiskatgrösse	Anzahl Untersuchungen	Mittelwert (%) HCl	Standardabweichung (%)
< 1	252 (230)	29 (30)	± 14 (± 13)
1 < 10	453 (421)	32 (35)	± 18 (± 19)
10 < 100	295 (252)	41 (37)	± 22 (± 21)
100 < 1000	147 (135)	49 (53)	± 28 (± 24)
> 1000	8 (32)	50 (59)	± 27 (± 24)

(2010)



# Heroin Base 2011 (SGRM)

## Mittlere Betäubungsmittelgehalte

Einzelkonfiskatgrösse	Anzahl Untersuchungen	Mittelwert (%) Base	Standardabweichung (%)
< 1	65 (116)	11 (16)	± 6 (± 9)
1 < 10	464 (459)	10 (17)	± 6 (± 9)
10 < 100	104 (123)	12 (19)	± 10 (± 14)
100 < 1000	102 (98)	17 (28)	± 12 (± 17)
> 1000	8 (3)	35 (23)	± 29 (± 18)

(2010)



# Heroin HCl 2011 (SGRM)

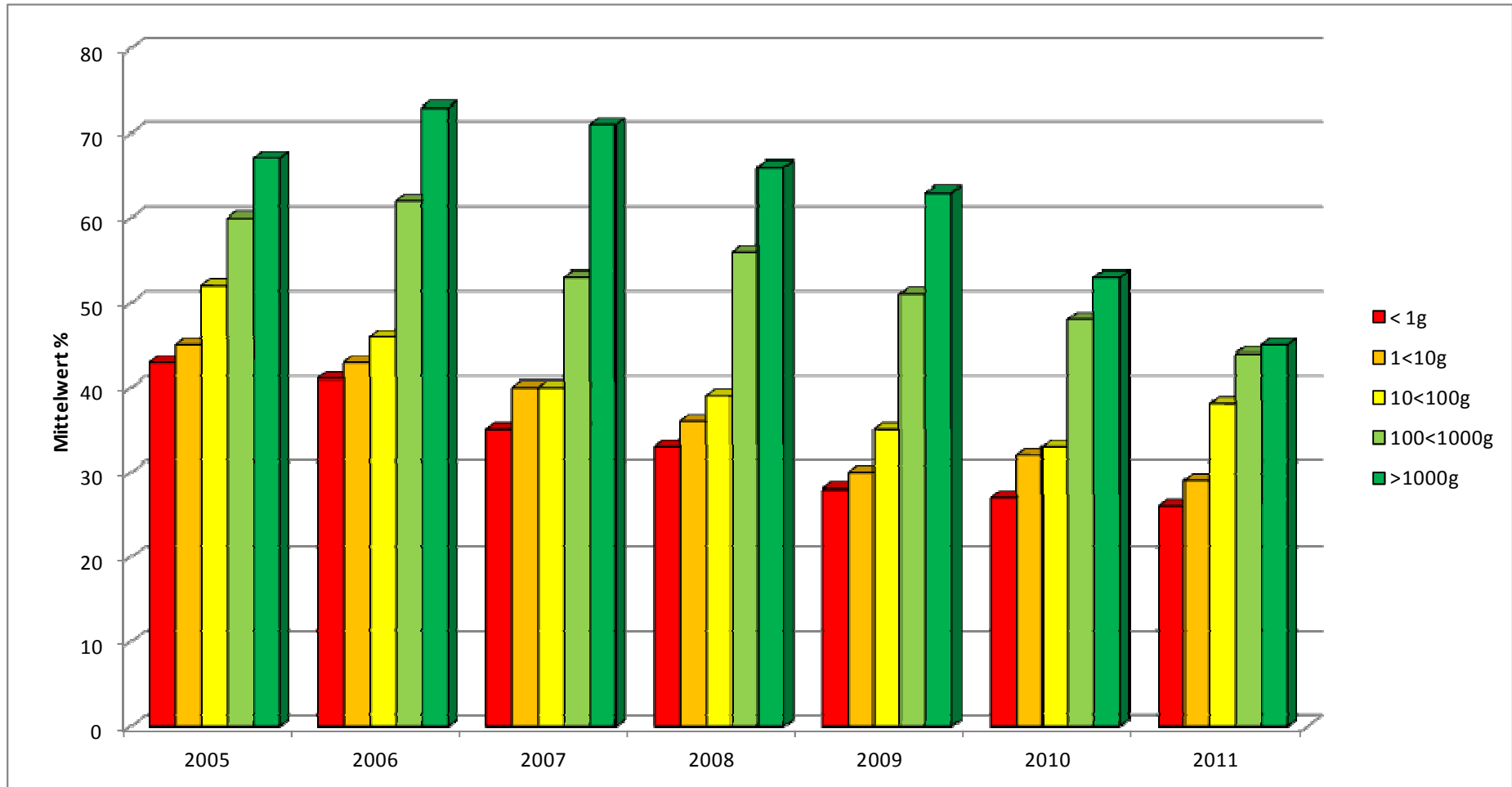
## Mittlere Betäubungsmittelgehalte

Einzelkonfiskat-grösse	Anzahl Untersuchungen	Mittelwert (%) HCl	Standard-abweichung (%)
< 1	65 (116)	13 (17)	± 7 (± 10)
1 < 10	464 (459)	11 (19)	± 6 (± 10)
10 < 100	104 (123)	13 (21)	± 11 (± 16)
100 < 1000	102 (98)	19 (31)	± 13 (± 18)
> 1000	8 (3)	38 (25)	± 32 (± 20)

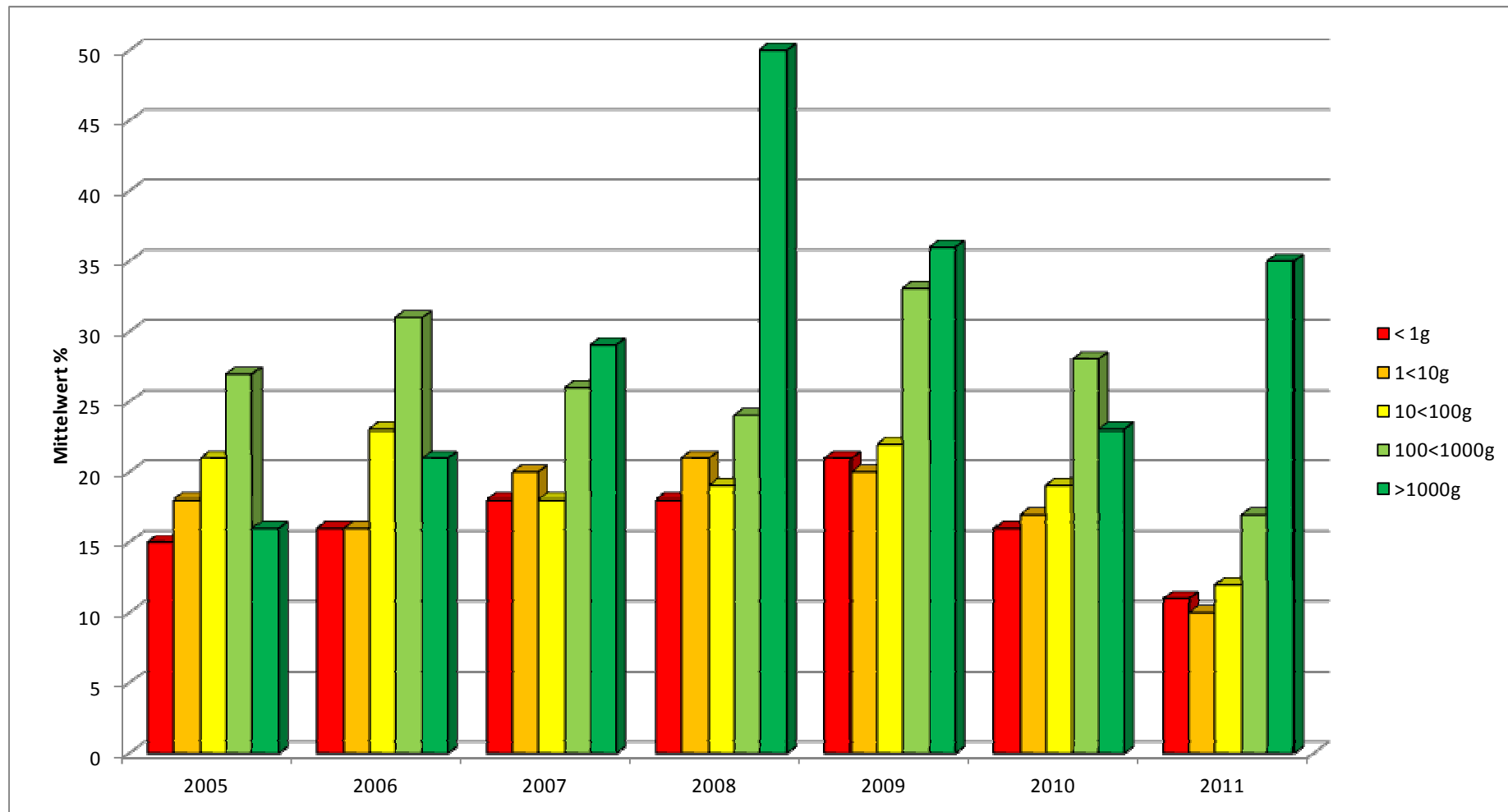
(2010)



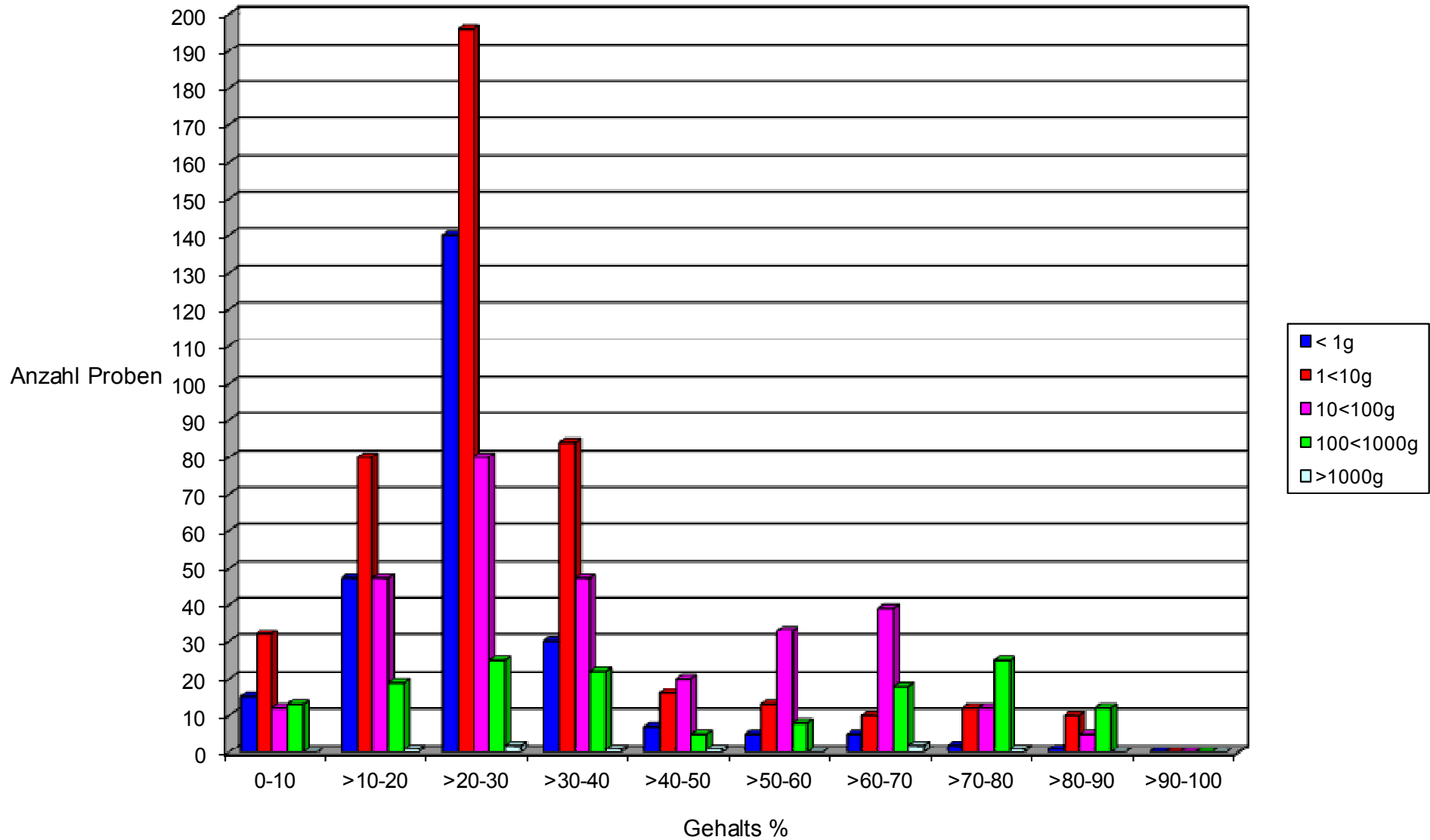
# Cocain Base Gehalt 2005 – 2011 (SGRM)



# Heroin Base Gehalt 2005 – 2011 (SGRM)

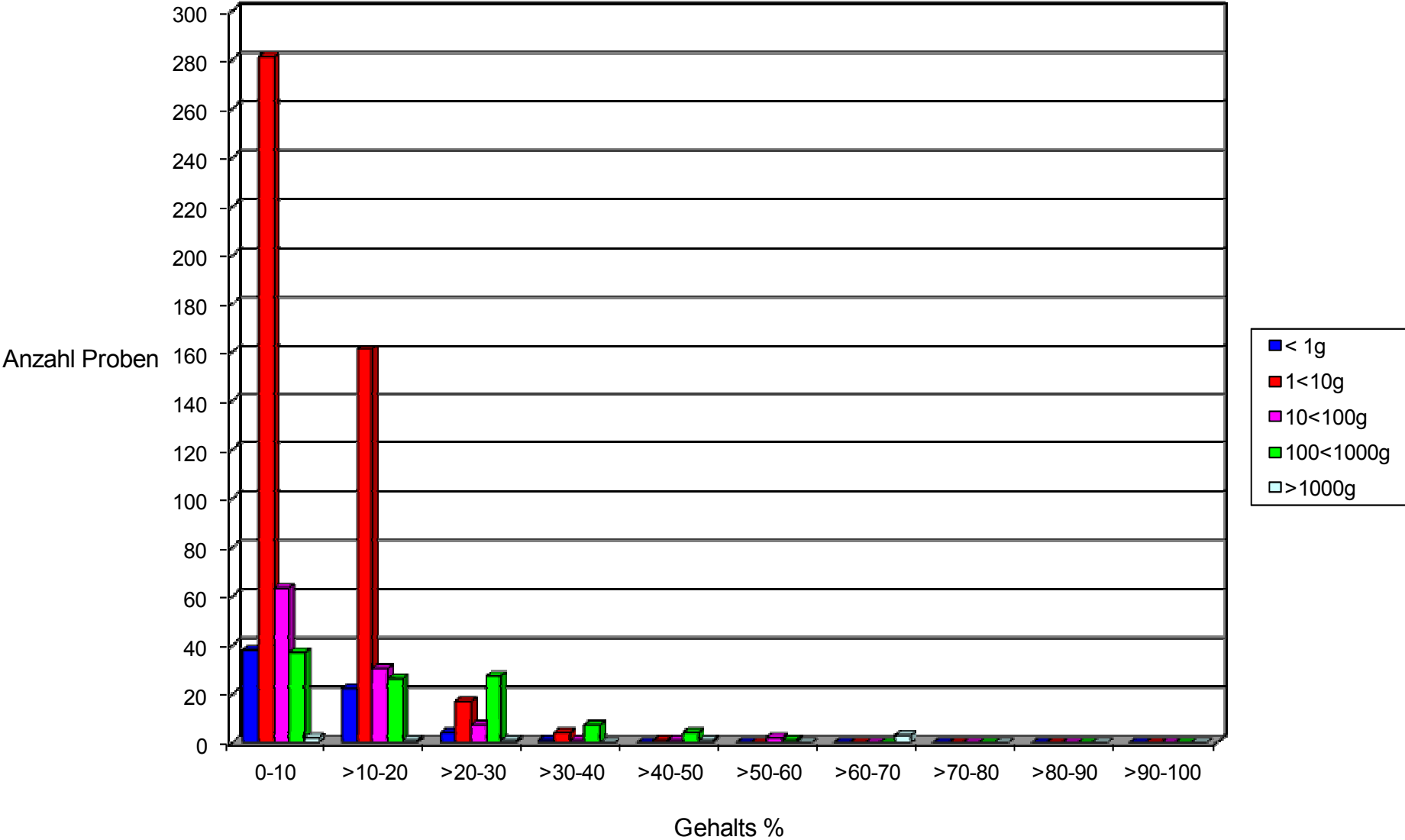


# Cocain-Base Detailübersicht 2011 (SGRM)





# Heroin-Base Detailübersicht 2011 (SGRM)



# Cocain-Base Gehaltswerte 2011 (SGRM)

Mengenbereich Statistischer Wert	< 1 g	< 1 – 10 g	< 10 - 100 g	< 100 - 1000 g	> 1000 g
<b>Gesamtgewicht [g]</b> Total: 172'909 (311'762)	<b>660</b> (674)	<b>34'629</b> (34'203)	<b>35'426</b> (28'550)	<b>85482</b> (119'385)	<b>16'712</b> (128'949)
<b>Anzahl Untersuchungen</b> Total: 1155 (1070)	<b>252</b> (230)	<b>453</b> (421)	<b>295</b> (252)	<b>147</b> (135)	<b>8</b> (32)
<b>Median [%]</b>	<b>24</b> (25)	<b>26</b> (27)	<b>32</b> (29)	<b>37</b> (44)	<b>38</b> (63)
<b>Oberes Quartil (75 %)</b>	<b>29</b> (31)	<b>33</b> (35)	<b>58</b> (40)	<b>70</b> (64)	<b>69</b> (71)
<b>Unteres Quartil (25 %)</b>	<b>21</b> (21)	<b>20</b> (21)	<b>22</b> (20)	<b>22</b> (28)	<b>25</b> (30)
<b>Quantil (84 %)</b>	<b>32</b> (34)	<b>38</b> (41)	<b>63</b> (49)	<b>76</b> (74)	<b>69</b> (72)
<b>Quantil (16 %)</b>	<b>16</b> (19)	<b>17</b> (19)	<b>19</b> (18)	<b>16</b> (25)	<b>23</b> (26)



# Cocain-HCl Gehaltswerte 2011 (SGRM)

Mengenbereich Statistischer Wert	< 1 g	< 1 – 10 g	< 10 - 100 g	< 100 - 1000 g	> 1000 g
<b>Gesamtgewicht [g]</b> Total: 172'909 (311'762)	<b>660</b> (674)	<b>34'629</b> (34'203)	<b>35'426</b> (28'550)	<b>85482</b> (119'385)	<b>16'712</b> (128'949)
<b>Anzahl Untersuchungen</b> Total: 1155 (1070)	<b>252</b> (230)	<b>453</b> (421)	<b>295</b> (252)	<b>147</b> (135)	<b>8</b> (32)
<b>Median [%]</b>	<b>26</b> (28)	<b>29</b> (31)	<b>36</b> (32)	<b>41</b> (53)	<b>42</b> (67)
<b>Oberes Quartil (75 %)</b>	<b>32</b> (35)	<b>36</b> (39)	<b>64</b> (45)	<b>77</b> (72)	<b>76</b> (78)
<b>Unteres Quartil (25 %)</b>	<b>23</b> (23)	<b>22</b> (24)	<b>25</b> (22)	<b>24</b> (30)	<b>27</b> (33)
<b>Quantil (84 %)</b>	<b>35</b> (38)	<b>42</b> (45)	<b>69</b> (55)	<b>83</b> (82)	<b>76</b> (79)
<b>Quantil (16 %)</b>	<b>18</b> (21)	<b>19</b> (21)	<b>20</b> (20)	<b>18</b> (27)	<b>25</b> (29)



# Heroin-Base Gehaltswerte 2011 (SGRM)

Mengenbereich Statistischer Wert	< 1 g	< 1 – 10 g	< 10 - 100 g	< 100 - 1000 g	> 1000 g
<b>Gesamtgewicht [g]</b> Total: 105'224 (168'249)	<b>109</b> (124)	<b>17'354</b> (14'946)	<b>7'212</b> (8924)	<b>48'411</b> (139'744)	<b>32'138</b> (4512)
<b>Anzahl Untersuchungen</b> Total: 743 (799)	<b>65</b> (116)	<b>464</b> (459)	<b>104</b> (123)	<b>102</b> (98)	<b>8</b> (3)
<b>Median [%]</b>	<b>9.2</b> (14)	<b>9.0</b> (16)	<b>8.9</b> (16)	<b>16</b> (27)	<b>36</b> (17)
<b>Oberes Quartil (75 %)</b>	<b>16</b> (19)	<b>13</b> (21)	<b>15</b> (24)	<b>26</b> (39)	<b>65</b> (30)
<b>Unteres Quartil (25 %)</b>	<b>7.3</b> (10)	<b>6.0</b> (11)	<b>5.3</b> (9)	<b>6.1</b> (13)	<b>9.2</b> (13)
<b>Quantil (84 %)</b>	<b>17</b> (20)	<b>14</b> (24)	<b>17</b> (29)	<b>29</b> (42)	<b>65</b> (35)
<b>Quantil (16 %)</b>	<b>5.9</b> (8)	<b>5.2</b> (9)	<b>4.7</b> (8)	<b>5.1</b> (10)	<b>1.8</b> (11)

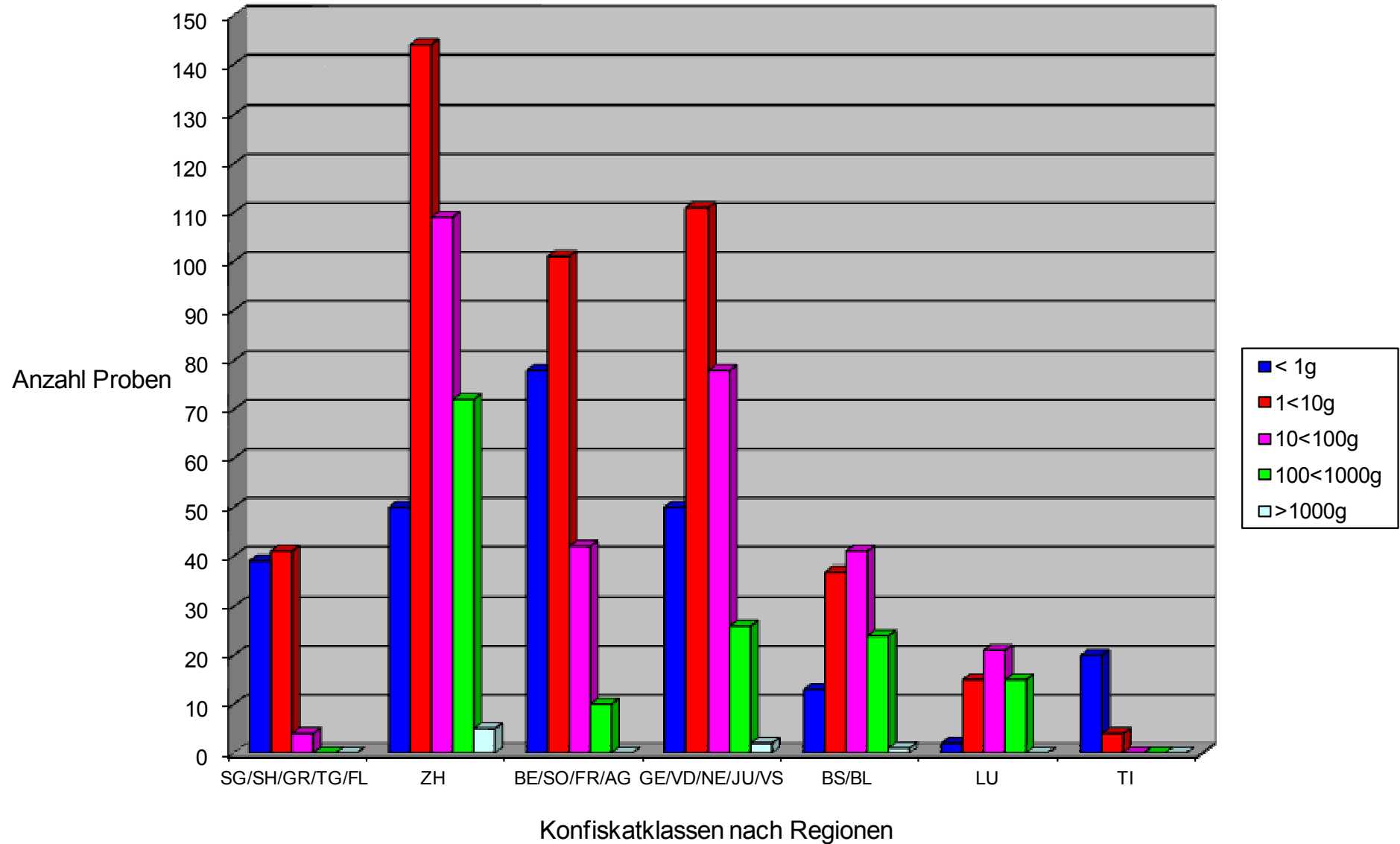


# Heroin-HCl Gehaltswerte 2011 (SGRM)

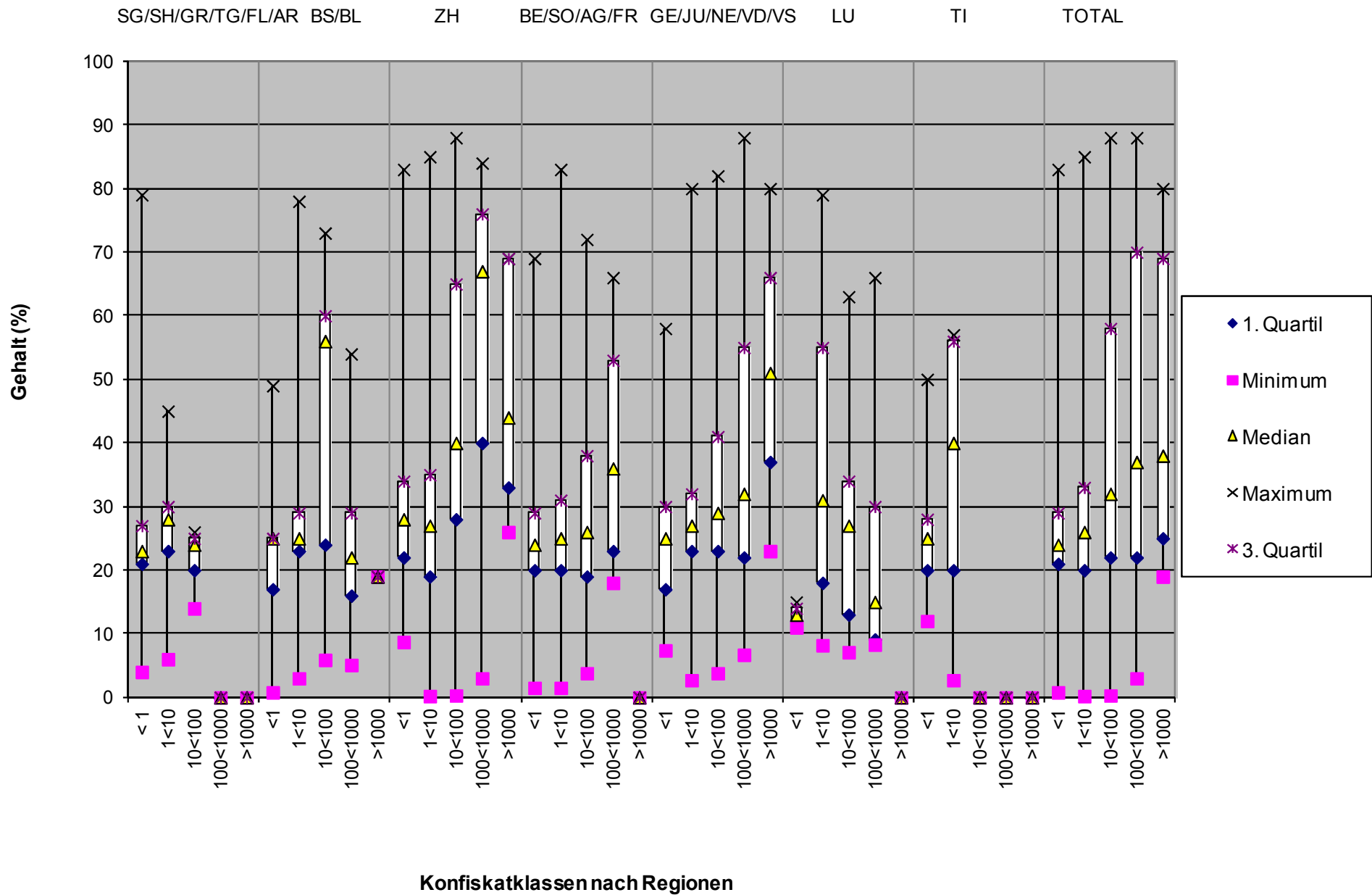
Mengenbereich Statistischer Wert	< 1 g	< 1 – 10 g	< 10 - 100 g	< 100 - 1000 g	> 1000 g
<b>Gesamtgewicht [g]</b> Total: 105'224 (168'249)	<b>109</b> (124)	<b>17'354</b> (14'946)	<b>7'212</b> (8924)	<b>48'411</b> (139'744)	<b>32'138</b> (4512)
<b>Anzahl Untersuchungen</b> Total: 743 (799)	<b>65</b> (116)	<b>464</b> (459)	<b>104</b> (123)	<b>102</b> (98)	<b>8</b> (3)
<b>Median [%]</b>	<b>10</b> (16)	<b>9.8</b> (18)	<b>9.8</b> (18)	<b>18</b> (30)	<b>40</b> (19)
<b>Oberes Quartil (75 %)</b>	<b>18</b> (21)	<b>14</b> (23)	<b>16</b> (27)	<b>29</b> (43)	<b>71</b> (33)
<b>Unteres Quartil (25 %)</b>	<b>8.0</b> (11)	<b>6.6</b> (12)	<b>5.8</b> (10)	<b>6.7</b> (15)	<b>10</b> (14)
<b>Quantil (84 %)</b>	<b>19</b> (22)	<b>16</b> (26)	<b>18</b> (31)	<b>31</b> (47)	<b>71</b> (38)
<b>Quantil (16 %)</b>	<b>6.5</b> (9)	<b>5.7</b> (10)	<b>5.2</b> (8)	<b>5.6</b> (11)	<b>2.0</b> (12)



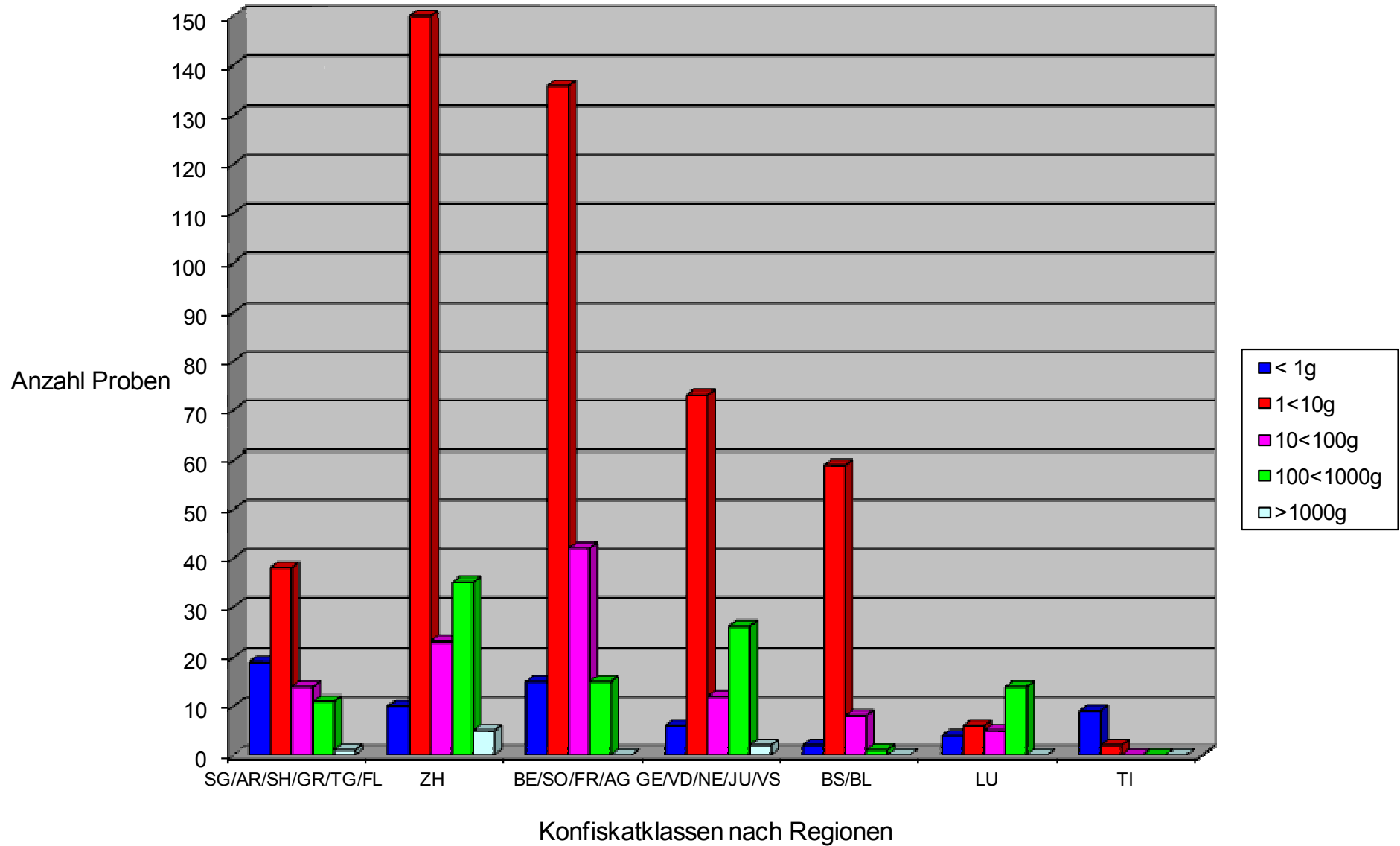
# Cocain Regionsübersicht 2011 (SGRM)



# Cocain-Base Regionsübersicht 2011 (SGRM)



# Heroin Regionsübersicht 2011 (SGRM)





# Heroin-Base Regionsübersicht 2011 (SGRM)

