



Schweizerische
Gesellschaft
für Rechtsmedizin
SGRM

Société Suisse
de Médecine Légale
SSML

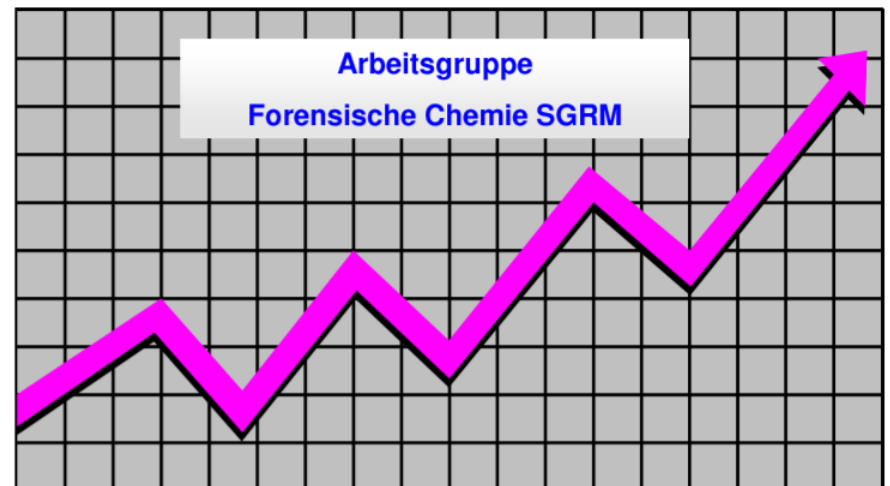
Società Svizzera
di Medicina Legale
SSML

SGRM Gruppe Forensische Chemie

Statistik 2023 Amphetamin, Metamphetamin, MDMA

<https://www.sgrm.ch/de/forensische-chemie-und-toxikologie/fachgruppe-forensische-chemie/statistiken-amphetamine/>

Auswertung:
IRM Bern
contact@irm.unibe.ch
031 684 0100



Anzahl Untersuchungen nach Laboratorien 2023

Labor	Amphetamin	Methamphetamin	MDMA	Total
BE	23	18	25	66
BS	4	2	16	23
CURML	1	0	3	4
ESC	8	6	19	33
SG	21	3	42	67
ZH	18	49	1	68
Total	75	78	106	259

Anzahl Untersuchungen nach Laboratorien 2022

<i>Labor</i>	<i>Amphetamin</i>	<i>Methamphetamin</i>	<i>MDMA</i>	<i>Total</i>
<i>BE</i>	<i>25</i>	<i>41</i>	<i>24</i>	<i>90</i>
<i>BS</i>	<i>24</i>	<i>8</i>	<i>26</i>	<i>58</i>
<i>CURML</i>	<i>-</i>	<i>-</i>	<i>-</i>	<i>-</i>
<i>ESC</i>	<i>10</i>	<i>11</i>	<i>12</i>	<i>33</i>
<i>SG</i>	<i>35</i>	<i>-</i>	<i>27</i>	<i>62</i>
<i>ZH</i>	<i>15</i>	<i>24</i>	<i>-</i>	<i>39</i>
<i>Total</i>	<i>109</i>	<i>84</i>	<i>89</i>	<i>282</i>

Amphetamin Base (Pulver, Paste) 2023

Einzelkonfiskatgrösse (Gramm)	Anzahl Untersuchungen	Mittelwert Base (%)	Standardabweichung (%CV)
< 1	7	40.8	± 33.1
1 < 10	23	27.7	± 23.1
10 < 100	28	31.8	± 26.4
100 < 1000	13	28.9	± 25.5
≥ 1000	2	34.4	± 34.8

Amphetamin Base (Pulver und Paste) 2022

<i>Einzelkonfiskatgrösse (Gramm)</i>	<i>Anzahl Untersuchungen</i>	<i>Mittelwert Base (%)</i>	<i>Standardabweichung (%CV)</i>
<i>< 1</i>	<i>15</i>	<i>30.4</i>	<i>± 29.1</i>
<i>1 < 10</i>	<i>35</i>	<i>18.7</i>	<i>± 19.3</i>
<i>10 < 100</i>	<i>42</i>	<i>23.3</i>	<i>± 23.6</i>
<i>100 < 1000</i>	<i>16</i>	<i>15.7</i>	<i>± 16.3</i>
<i>≥ 1000</i>	<i>1</i>	<i>9.7</i>	<i>-</i>

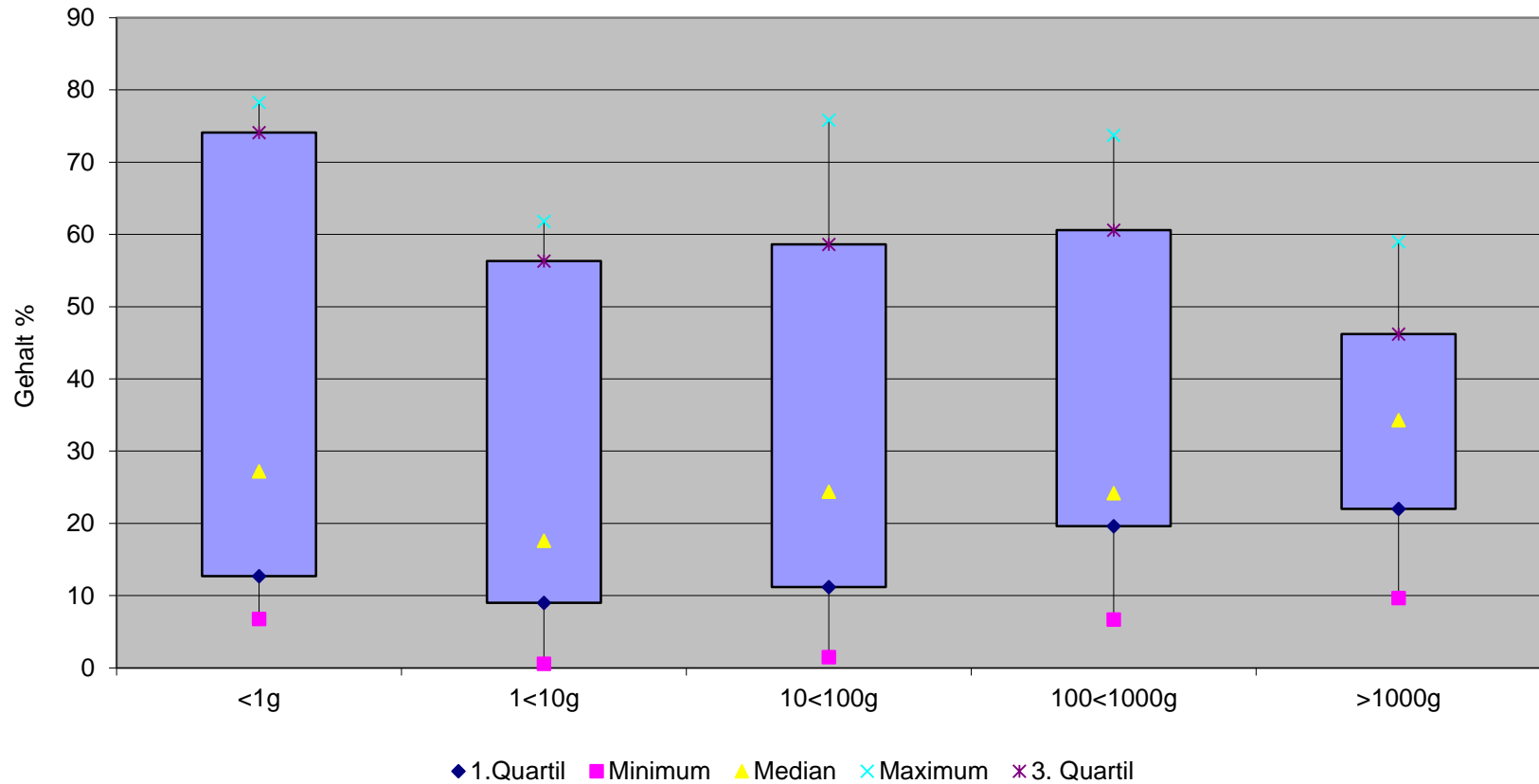
Amphetamin Base (Pulver, Paste) Gehaltswerte 2023

Mengenbereich (g)	< 1	1 < 10	10 < 100	100 < 1000	≥ 1000
Gesamtgewicht (g) Total: 6'740	13.5	76.6	1037.4	3540.1	2032.4
Anzahl Untersuchungen Total: 75	7	23	28	13	2
Median (%)	27.2	17.6	24.4	20.6	34.3
Oberes Quartil (75 %)	74.1	56.3	58.6	25.4	46.2
Unteres Quartil (25 %)	12.7	9.0	11.2	14.0	22.0
Minimum	6.8	5.0	1.5	6.7	9.7
Maximum	78.3	61.8	75.8	73.7	59.0

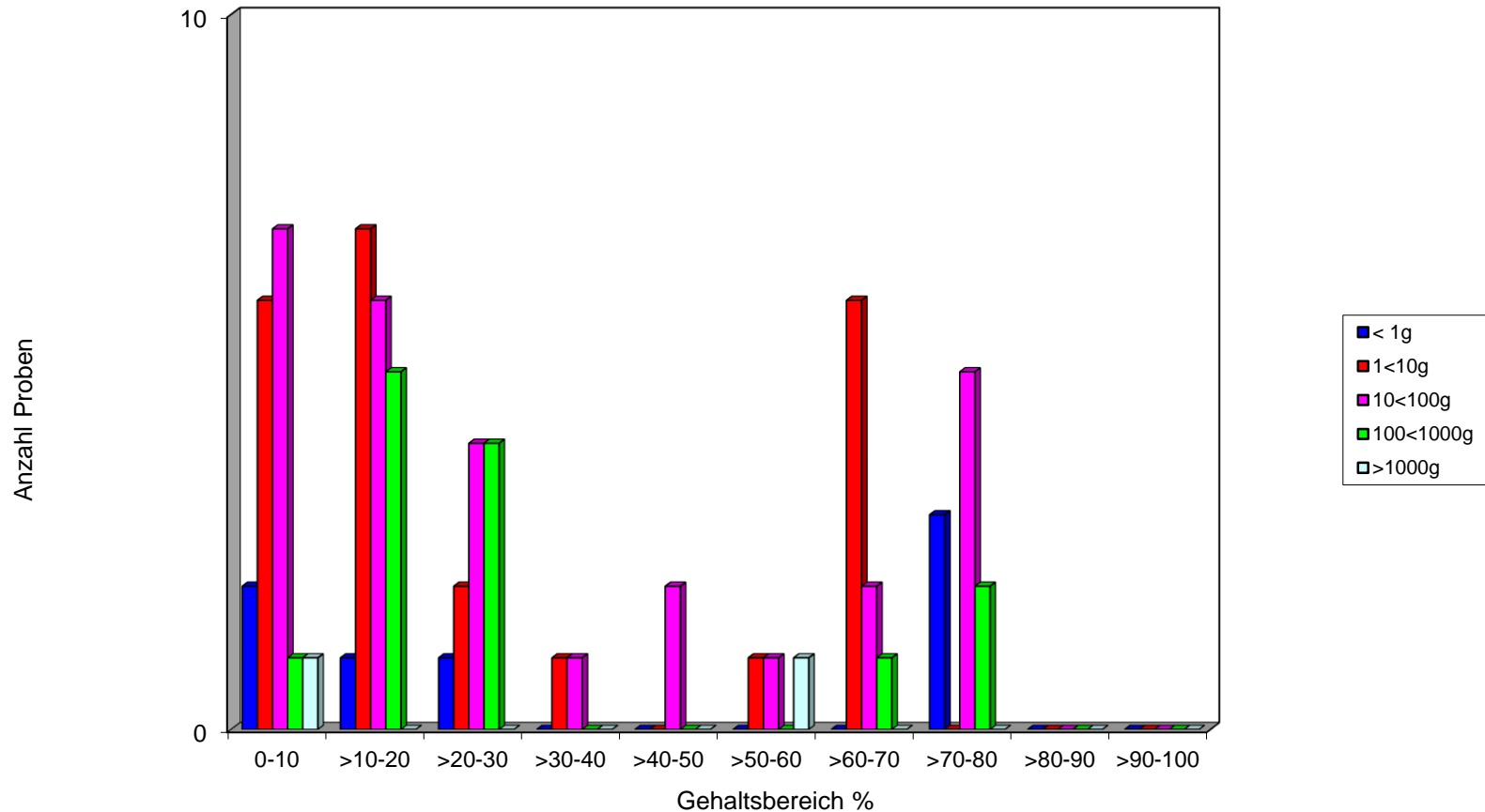
Amphetamin Base, (Pulver, Paste) Gehaltswerte 2022

Mengenbereich (g)	< 1	1 < 10	10 < 100	100 < 1000	≥ 1000
Gesamtgewicht (g) Total: 9'488	11.6	153.2	2'011.2	6'274.8	1026
Anzahl Untersuchungen Total: 109	14	35	42	16	1
Median (%)	16.0	10.1	14.4	13.5	9.7
Oberes Quartil (75 %)	48.2	16.2	25.5	17.9	-
Unteres Quartil (25 %)	10.2	7.2	8.4	6.1	-
Minimum	4.8	6.0	1.2	0.2	-
Maximum	73.5	73.5	73.5	69.7	-

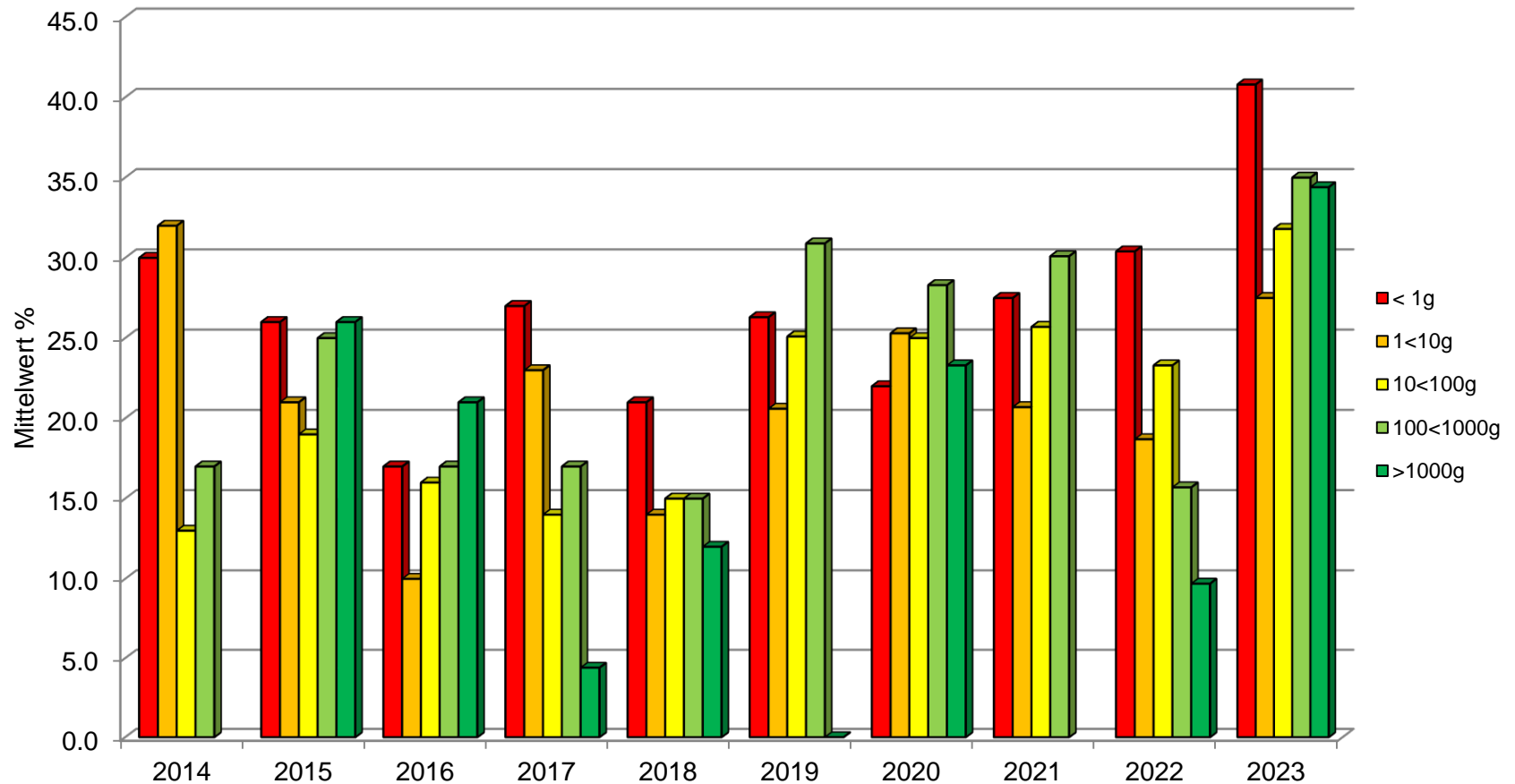
Amphetamin Base, Gehaltswerte 2023



Amphetamin Base, Detailübersicht 2023



Amphetamin Base, Gehalte 2014 – 2023



Methamphetamin Base (Pulver) 2023

Einzelkonfiskat- grösse (Gramm)	Anzahl Untersuchungen	Mittelwert Base (%)	Standard- abweichung (%CV)
< 1	12	73.1	± 20.2
1 < 10	24	77.4	± 5.7
10 < 100	35	75.1	± 10.7
100 < 1000	2	80.3	± 0.5
≥ 1000	-	-	-

Methamphetamin Base (Pulver) 2022

<i>Einzelkonfiskat- Grösse (Gramm)</i>	<i>Anzahl Untersuchungen</i>	<i>Mittelwert Base (%)</i>	<i>Standard- abweichung (%CV)</i>
< 1	10	71.2	± 24.9
1 < 10	26	78.5	± 12.2
10 < 100	27	76.3	± 10.3
100 < 1000	13	79.3	± 21.5
≥ 1000	-	-	-

Methamphetamin Base (Pulver) Gehaltswerte 2023

Mengenbereich (g)	< 1	1 < 10	10 < 100	100 < 1000	≥ 1000
Gesamtgewicht (g) Total: 3'559.1	9.5	190.0	2267.3	1092.3	-
Anzahl Untersuchungen Total: 78	12	24	35	2	-
Median (%)	79.7	80.1	78.8	80.3	-
Oberes Quartil (75 %)	80.1	80.3	80.4	80.4	-
Unteres Quartil (25 %)	77.4	78.2	74.8	80.1	-
Minimum	9.1	62.3	25.5	79.9	-
Maximum	80.3	80.6	80.6	80.6	-

Methamphetamin Base (Pulver) Gehaltswerte 2022

Mengenbereich (g)	< 1	1 < 10	10 < 100	100 < 1000	≥ 1000
Gesamtgewicht (g) Total: 5'497.1	5.39	198.8	918.4	3'785.4	-
Anzahl Untersuchungen Total: 84	10	26	27	13	-
Median (%)	78.9	78.2	79.4	79.9	-
Oberes Quartil (75 %)	80.3	80.0	80.1	80.3	-
Unteres Quartil (25 %)	77.0	76.7	75.5	77.8	-
Minimum	0.5	75.3	26.3	2.4	-
Maximum	80.6	80.6	80.6	80.6	-

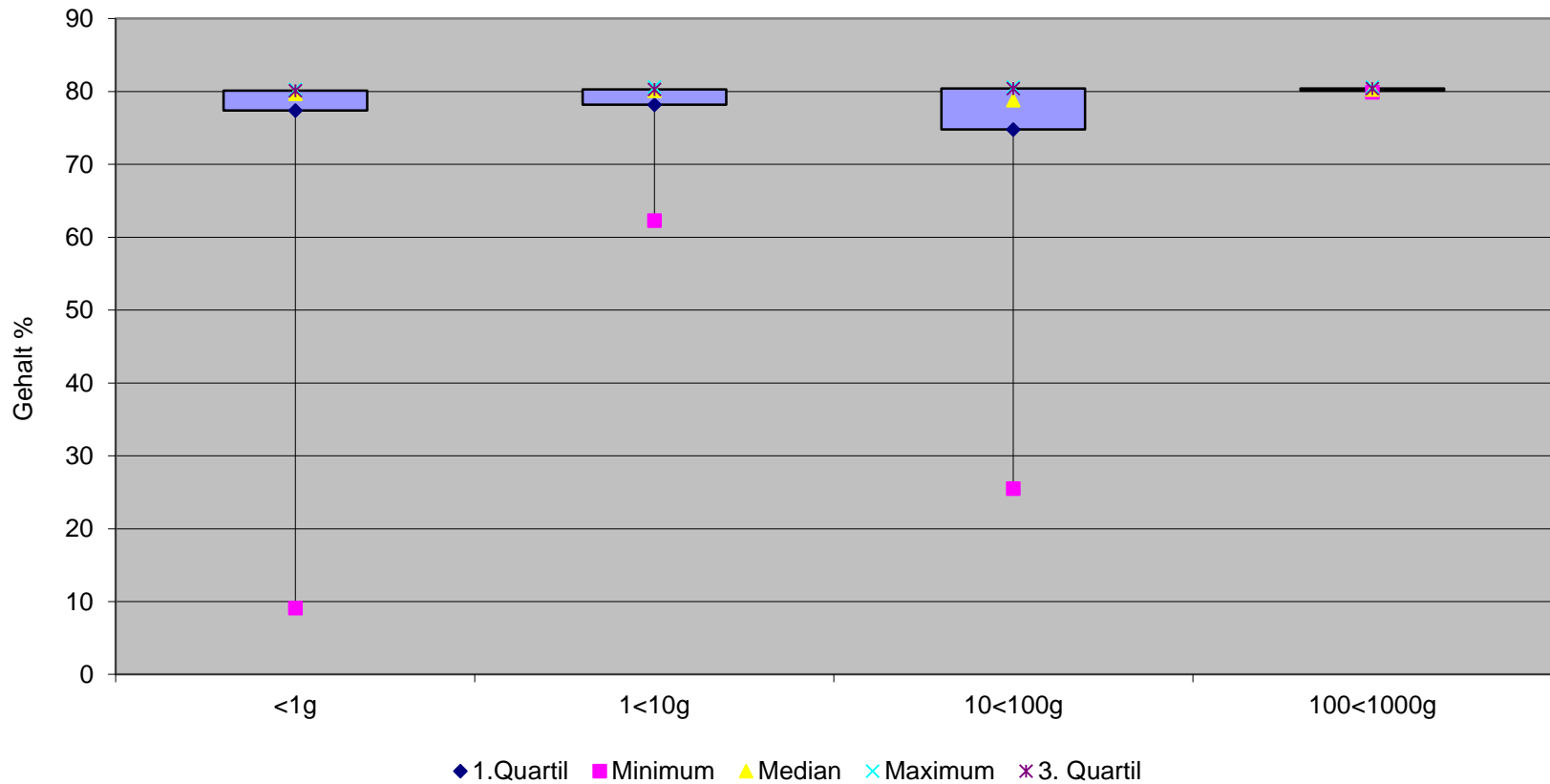
Thaipillen, Methamphetamin Base, Gehaltswerte 2023

Thaipillen (WY)	Gehalt Base %	Dosis pro Tablette (mg)
Gesamtgewicht (g) Total: 33.8		
Anzahl Untersuchungen Total: 3		
Median (%)	5.3	5.0
Oberes Quartil (75 %)	6.8	7.7
Unteres Quartil (25 %)	3.5	3.7
Minimum	1.7	2.3
Maximum	8.3	10.5

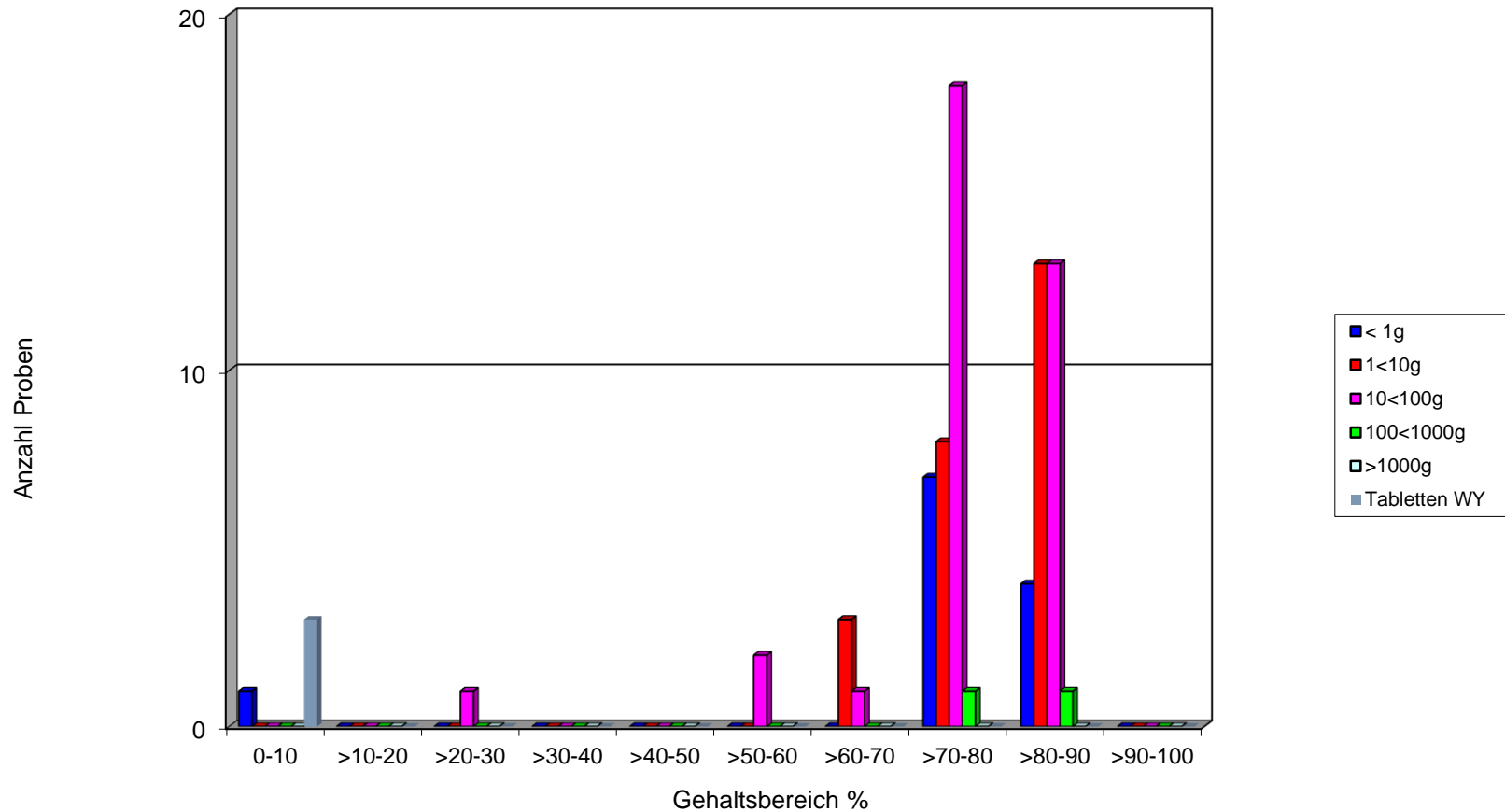
Thaipillen (WY), Methamphetamin Base, Gehaltswerte 2022

<i>Thaipillen (WY)</i>	<i>Gehalt Base %</i>	<i>Dosis pro Tablette (mg)</i>
<i>Gesamtgewicht (g) Total: 589.1</i>		
<i>Anzahl Untersuchungen Total: 8</i>		
<i>Median (%)</i>	14.4	14.4
<i>Oberes Quartil (75 %)</i>	16.9	15.6
<i>Unteres Quartil (25 %)</i>	14.3	13.8
<i>Minimum</i>	2.1	2.1
<i>Maximum</i>	17.3	17.3

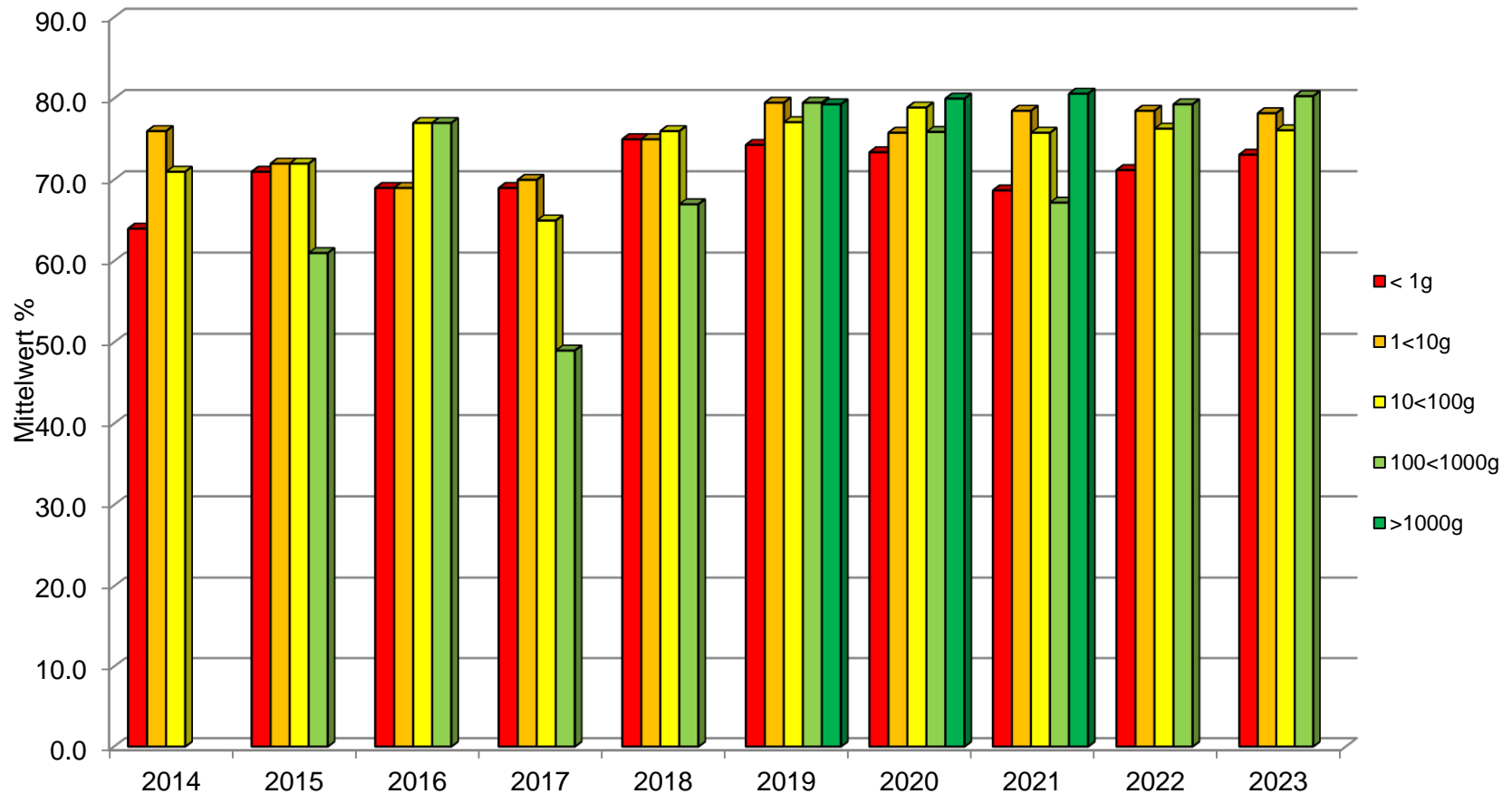
Methamphetamin Base, Gehaltswerte 2023



Methamphetamin Base, Detailübersicht 2022



Methamphetamin Base, Gehalte 2014 – 2023



MDMA Base (Pulver, Paste) 2023

Einzelkonfiskatgrösse (Gramm)	Anzahl Untersuchungen	Mittelwert Base (%)	Standardabweichung (%CV)
< 1	11	69.2	± 27.2
1 < 10	22	72.2	± 18.8
10 < 100	6	68.9	± 19.1
100 < 1000	4	66.4	± 27.1
≥ 1000	4	77.7	± 2.0

MDMA Base (Pulver, Paste) 2022

Einzelkonfiskatgrösse (Gramm)	Anzahl Untersuchungen	Mittelwert Base (%)	Standardabweichung (%CV)
< 1	15	68.9	± 22.5
1 < 10	14	56.7	± 33.8
10 < 100	7	55.1	± 33.3
100 < 1000	3	79.7	± 0.9
≥ 1000	-	-	-

MDMA Base (Pulver und Paste), Gehaltswerte 2023

Mengenbereich (g)	< 1	1 < 10	10 < 100	100 < 1000	≥ 1000
Gesamtgewicht (g) Total: 8086.8	6.6	372.6	461.1	765.7	6480.7
Anzahl Untersuchungen Total: 47	11	22	6	4	4
Median (%)	79.7	79.1	77.3	77.8	77.4
Oberes Quartil (75 %)	82.4	81.7	78.1	81.3	78.5
Unteres Quartil (25 %)	77.7	75.5	73.0	62.9	76.6
Minimum	6.3	12.8	30.2	26.1	75.6
Maximum	84.0	84.0	78.4	83.8	80.3

MDMA Base (Pulver und Paste), Gehaltswerte 2022

Mengenbereich (g)	< 1	1 < 10	10 < 100	100 < 1000	≥ 1000
<i>Gesamtgewicht (g)</i> <i>Total: 803.5</i>	7.0	48.4	243.4	505.8	-
<i>Anzahl Untersuchungen</i> <i>Total: 39</i>	15	14	7	3	-
<i>Median (%)</i>	77.3	76.6	77.3	76.5	-
<i>Oberes Quartil (75 %)</i>	78.5	76.9	78.6	80.1	-
<i>Unteres Quartil (25 %)</i>	75.4	22.9	35.5	79.2	-
<i>Minimum</i>	2.9	4.7	0.1	79.0	-
<i>Maximum</i>	80.0	80.2	80.0	80.8	-

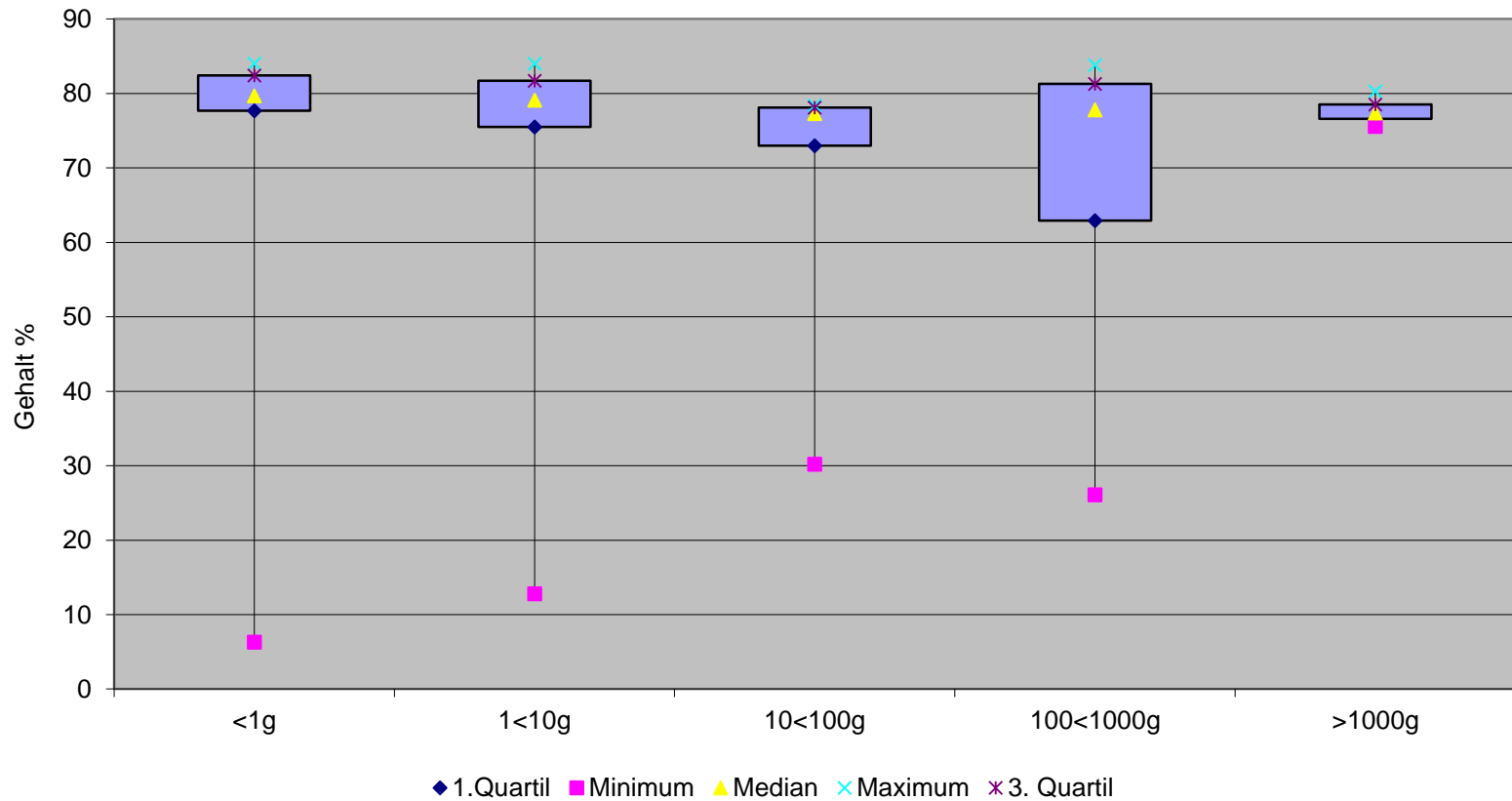
Ecstasy Tabletten, MDMA Base, Gehaltswerte 2023

XTC Tabletten	Gehalt Base %	Dosis pro Tablette (mg)
Gesamtgewicht (g) Total: 4'602.6		
Anzahl Untersuchungen Total: 63		
Median (%)	25.2	118.5
Oberes Quartil (75 %)	34.7	143.2
Unteres Quartil (25 %)	15.9	88.5
Minimum	5.6	17.9
Maximum	49.5	183.0

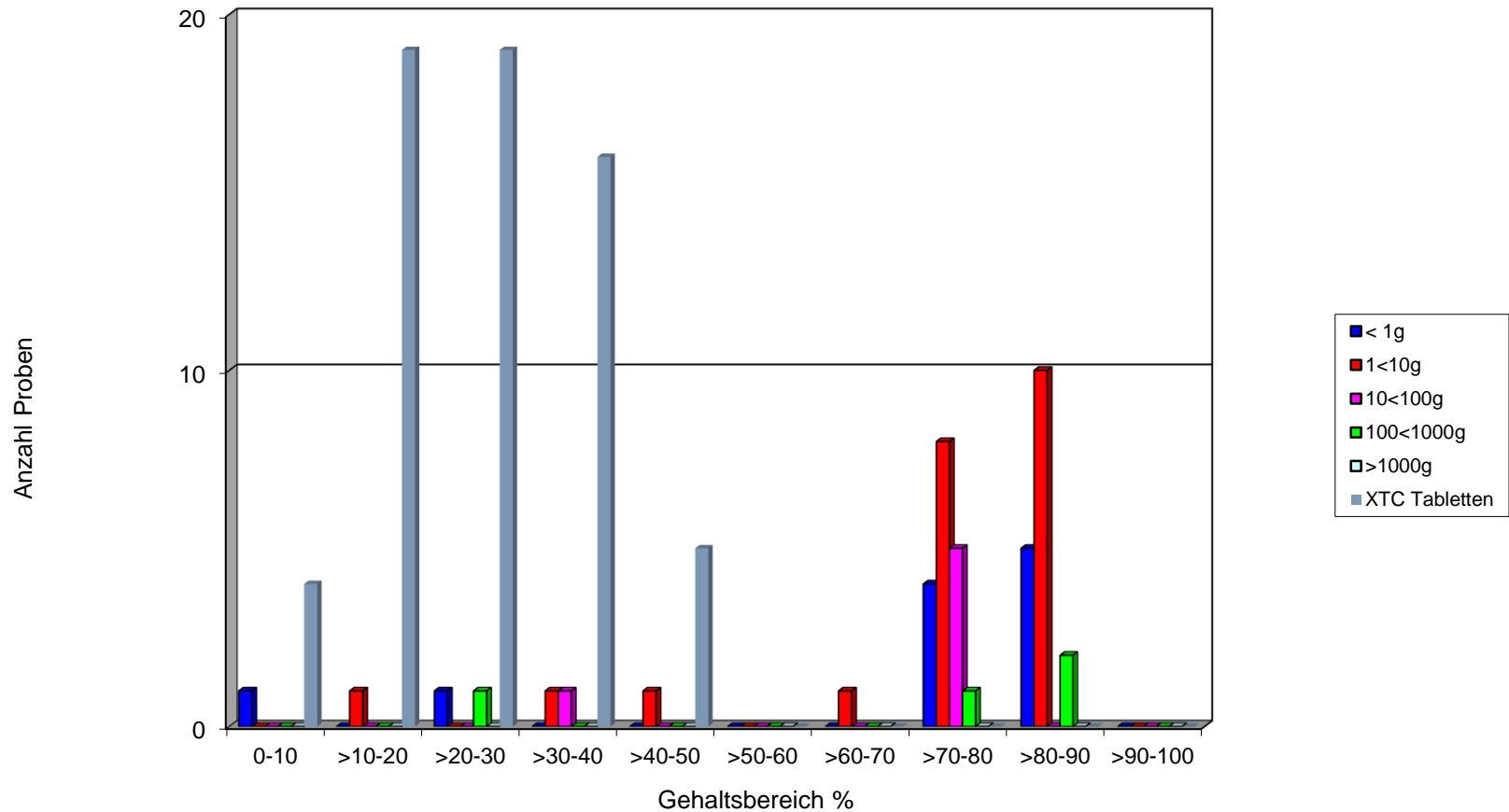
Ecstasy Tabletten, MDMA Base, Gehaltswerte 2022

XTC Tablette	Gehalt Base %	Dosis pro Tablette (mg)
<i>Gesamtgewicht (g)</i> <i>Total: 13'448.4</i>		
<i>Anzahl Untersuchungen</i> <i>Total: 50</i>		
<i>Median (%)</i>	32.6	154.0
<i>Oberes Quartil (75 %)</i>	39.0	201.2
<i>Unteres Quartil (25 %)</i>	21.4	104.1
<i>Minimum</i>	9.6	40.5
<i>Maximum</i>	80.9	560.0

MDMA Base, Gehaltswerte 2023



MDMA Base, Detailübersicht 2023



MDMA Base, Gehalte 2014 – 2023

