



Schweizerische
Gesellschaft
für Rechtsmedizin
SGRM

Société Suisse
de Médecine Légale
SSML

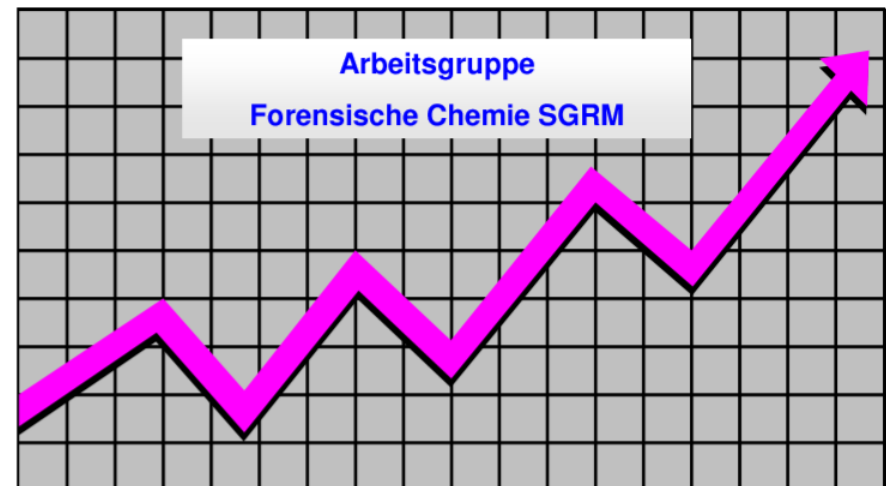
Società Svizzera
di Medicina Legale
SSML

SGRM Gruppe Forensische Chemie

Statistik 2019 Amphetamin, Metamphetamin, MDMA

<https://www.sgrm.ch/de/forensische-chemie-und-toxikologie/fachgruppe-forensische-chemie/statistiken-amphetamine/>

Auswertung:
IRM Bern
contact@irm.unibe.ch
031 631 8411



Anzahl Untersuchungen nach Laboratorien 2019

Labor	Amphetamin	Methamphetamin	MDMA	Total
BE	20	33	45	98
BS	25	6	47	78
CURML	-	0	4	4
ESC	9	23	40	72
SG	51	1	60	112
ZH	40	22	1	63
Total	145	85	197	427

Anzahl Untersuchungen nach Laboratorien 2018

<i>Labor</i>	<i>Amphetamin</i>	<i>Methamphetamin</i>	<i>MDMA</i>	<i>Total</i>
<i>BE</i>	<i>45</i>	<i>37</i>	<i>40</i>	<i>122</i>
<i>BS</i>	<i>2</i>	<i>10</i>	<i>10</i>	<i>22</i>
<i>CURML</i>	<i>1</i>	<i>2</i>	<i>10</i>	<i>13</i>
<i>ESC</i>	<i>1</i>	<i>2</i>	<i>10</i>	<i>13</i>
<i>SG</i>	<i>55</i>	<i>6</i>	<i>17</i>	<i>78</i>
<i>ZH</i>	<i>12</i>	<i>19</i>	<i>-</i>	<i>31</i>
<i>Total</i>	<i>116</i>	<i>76</i>	<i>87</i>	<i>279</i>

Amphetamin Base (Pulver, Paste) 2019

Einzelkonfiskat- grösse (Gramm)	Anzahl Untersuchungen	Mittelwert Base (%)	Standard- abweichung (%CV)
< 1	5	26.3	± 10.9
1 < 10	30	20.6	± 22.6
10 < 100	68	25.1	± 21.9
100 < 1000	42	30.9	± 22.4
≥ 1000	-	-	-

Amphetamin Base (Pulver und Paste) 2018

<i>Einzelkonfiskat- Grösse (Gramm)</i>	<i>Anzahl Untersuchungen</i>	<i>Mittelwert Base (%)</i>	<i>Standard- abweichung (%CV)</i>
<i>< 1</i>	<i>19</i>	<i>21</i>	<i>± 17</i>
<i>1 < 10</i>	<i>38</i>	<i>14</i>	<i>± 10</i>
<i>10 < 100</i>	<i>43</i>	<i>15</i>	<i>± 8.5</i>
<i>100 < 1000</i>	<i>13</i>	<i>15</i>	<i>± 9.9</i>
<i>≥ 1000</i>	<i>3</i>	<i>12</i>	<i>± 0.0</i>

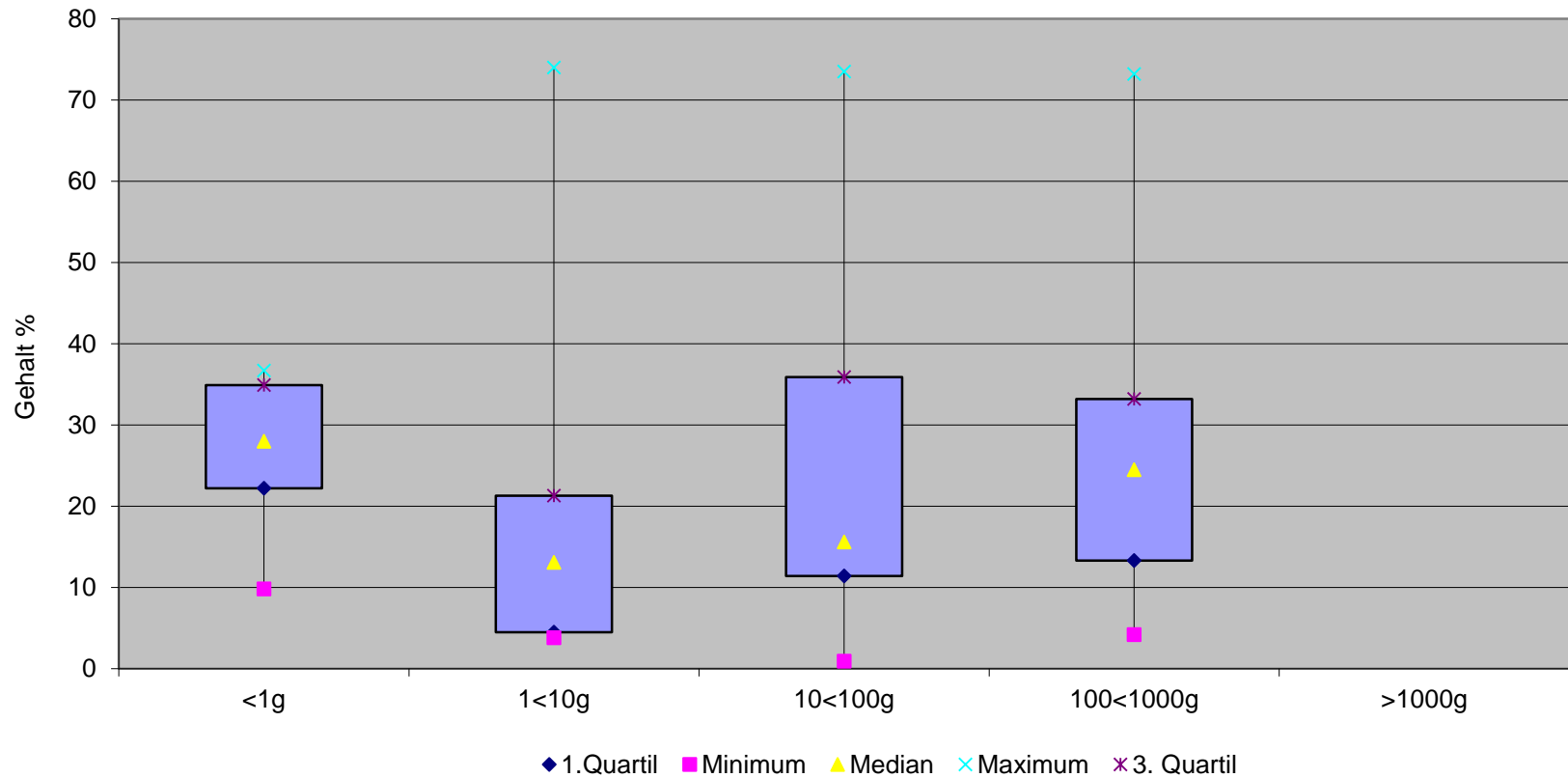
Amphetamin Base (Pulver, Paste) Gehaltswerte 2019

Mengenbereich (g)	< 1	1 < 10	10 < 100	100 < 1000	≥ 1000
Gesamtgewicht (g) Total: 23'841 g	8.5	149.6	3'070.7	20'612.5	-
Anzahl Untersuchungen Total: 145	5	30	68	42	-
Median (%)	28.0	13.3	15.6	24.5	-
Oberes Quartil (75 %)	34.9	21.3	35.9	33.2	-
Unteres Quartil (25 %)	22.2	4.5	11.4	13.3	-
Minimum	9.8	3.8	0.9	4.2	-
Maximum	36.7	73.5	73.5	73.2	-

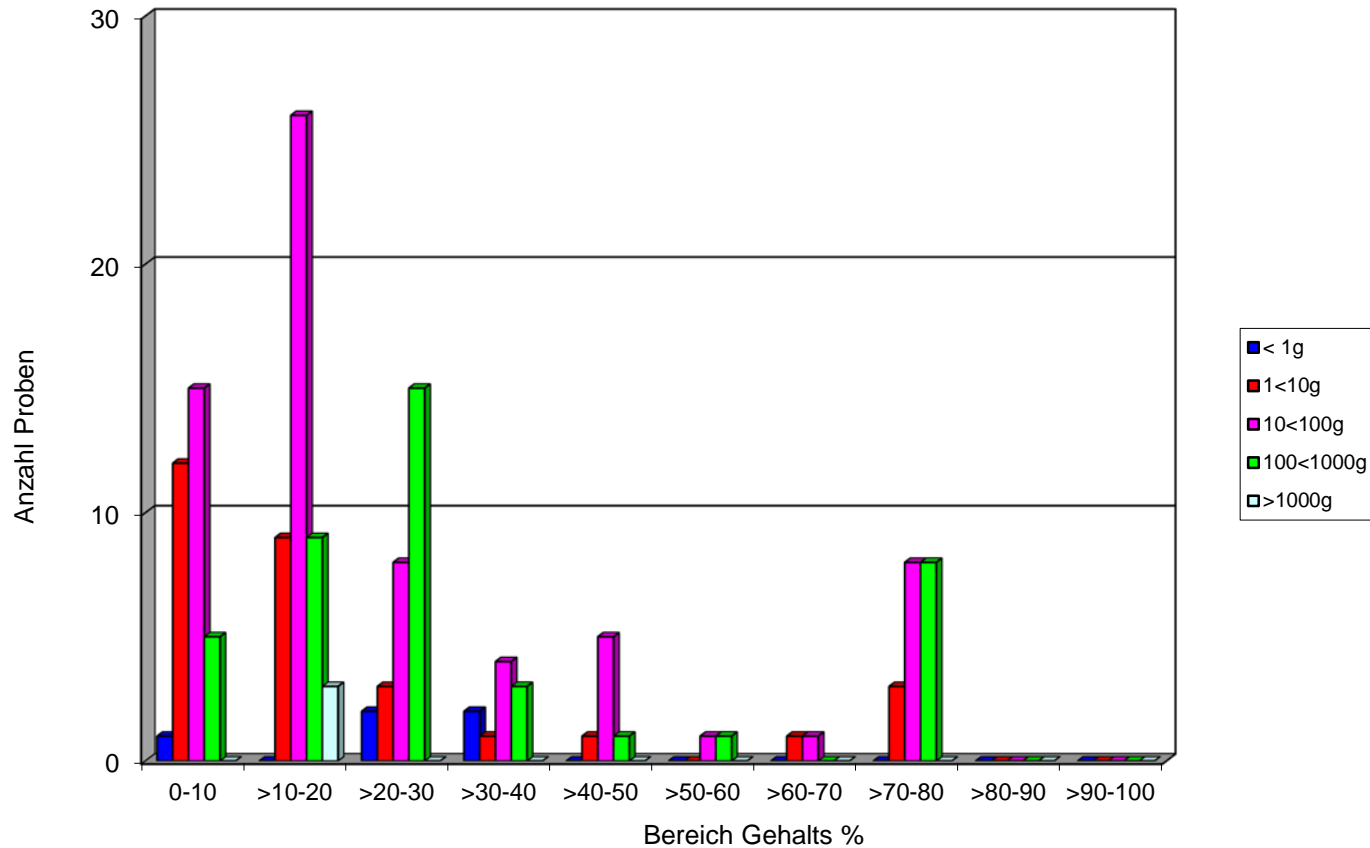
Amphetamin Base, (Pulver, Paste) Gehaltswerte 2018

Mengenbereich (g)	< 1	1 < 10	10 < 100	100 < 1000	≥ 1000
Gesamtgewicht (g) Total: 9'453 g	122	192	2'284	3'978	2'877
Anzahl Untersuchungen Total: 116	19	38	43	13	3
Median (%)	16	14	13	13	12
Oberes Quartil (75 %)	27	17	17	14	12
Unteres Quartil (25 %)	11	8.3	10	11	12
Minimum	2.7	2.0	1.0	1.0	12
Maximum	69	60	33	39	12

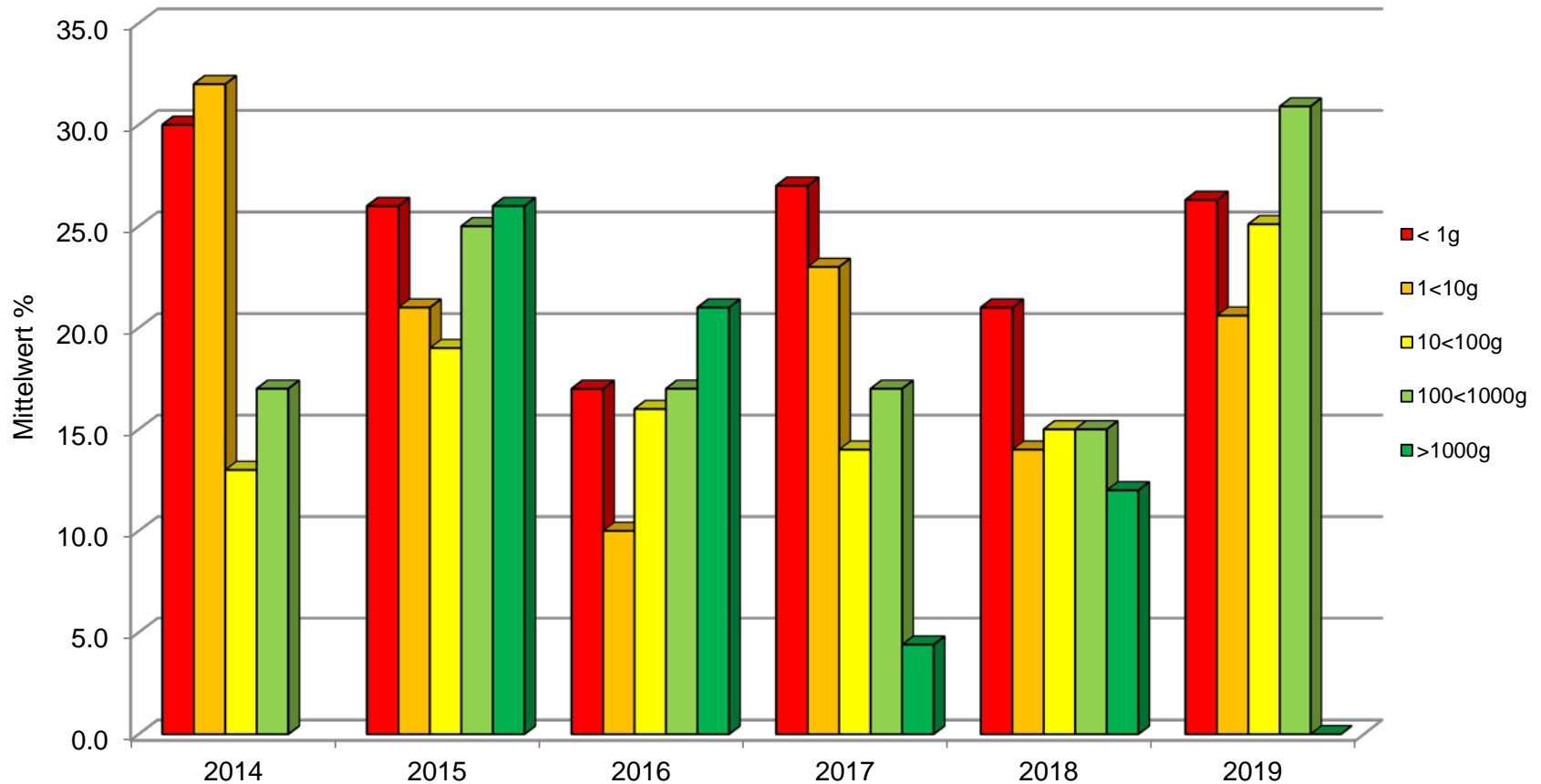
Amphetamin Base, Detailübersicht 2019



Amphetamin Base, Detailübersicht 2019



Amphetamin Base, Gehalte 2014 – 2019



Methamphetamin Base (Pulver) 2019

Einzelkonfiskat- grösse (Gramm)	Anzahl Untersuchungen	Mittelwert Base (%)	Standard- abweichung (%CV)
< 1	22	74.3	18.3
1 < 10	24	79.5	2.3
10 < 100	18	77.1	7.1
100 < 1000	11	79.5	1.4
≥ 1000	3	79.3	1.2

Methamphetamin Base (Pulver) 2018

<i>Einzelkonfiskat- Grösse (Gramm)</i>	<i>Anzahl Untersuchungen</i>	<i>Mittelwert Base (%)</i>	<i>Standard- abweichung (%CV)</i>
< 1	23	75	± 8.9
1 < 10	17	75	± 8.7
10 < 100	25	76	± 16
100 < 1000	8	67	± 27
≥ 1000	-	-	-

Methamphetamin Base (Pulver) Gehaltswerte 2019

Mengenbereich (g)	< 1	1 < 10	10 < 100	100 < 1000	≥ 1000
Gesamtgewicht (g) Total: 7'345 g	18.5	151.4	573.4	3'140.1	3'003.3
Anzahl Untersuchungen Total: 84	22	24	18	11	3
Median (%)	80.3	80.0	80.6	79.9	80.6
Oberes Quartil (75 %)	80.6	80.6	80.6	80.1	80.6
Unteres Quartil (25 %)	76.8	79.6	79.2	79.8	79.6
Minimum	14.4	71.3	58.7	76.0	78.5
Maximum	80.6	80.6	80.6	80.6	80.6

Methamphetamin Base (Pulver) Gehaltswerte 2018

Mengenbereich (g)	< 1	1 < 10	10 < 100	100 < 1000	≥ 1000
Gesamtgewicht (g) Total: 3'401 g	49	87	1'118	2'147	0
Anzahl Untersuchungen Total: 73	23	17	25	8	-
Median (%)	79	80	80	76	-
Oberes Quartil (75 %)	81	81	81	81	-
Unteres Quartil (25 %)	70	73	79	70	-
Minimum	52	53	0.9	1.7	-
Maximum	85	81	85	81	-

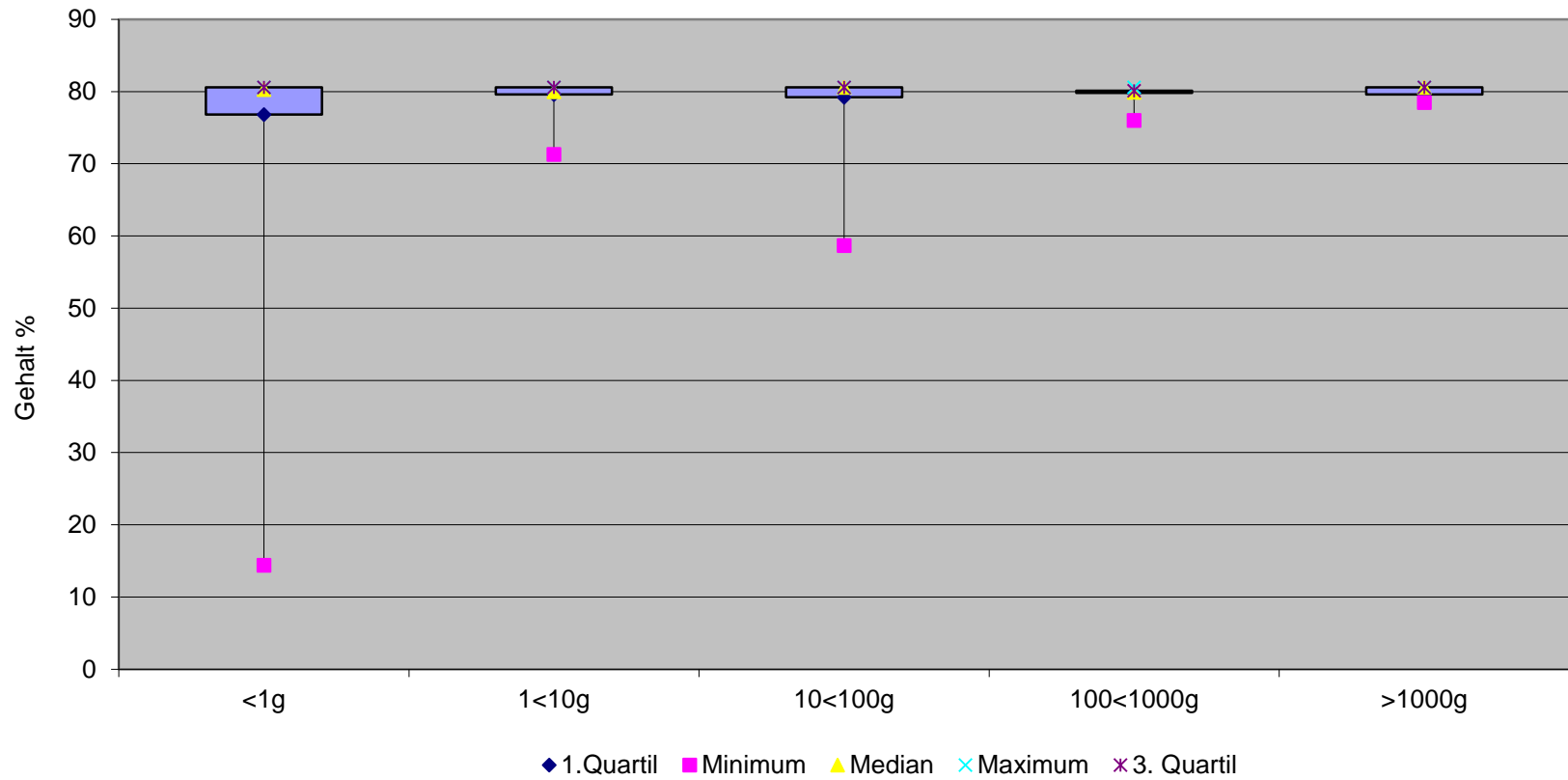
Thaipillen, Methamphetamin Base, Gehaltswerte 2019

Thaipillen (WY)	Gehalt Base %	Dosis pro Tablette (mg)
Gesamtgewicht (g) Total: 459 g		
Anzahl Untersuchungen Total: 6		
Median (%)	15.2	9.1
Oberes Quartil (75 %)	16.4	12.7
Unteres Quartil (25 %)	14.7	8.7
Minimum	14.6	8.0
Maximum	17.0	15.5

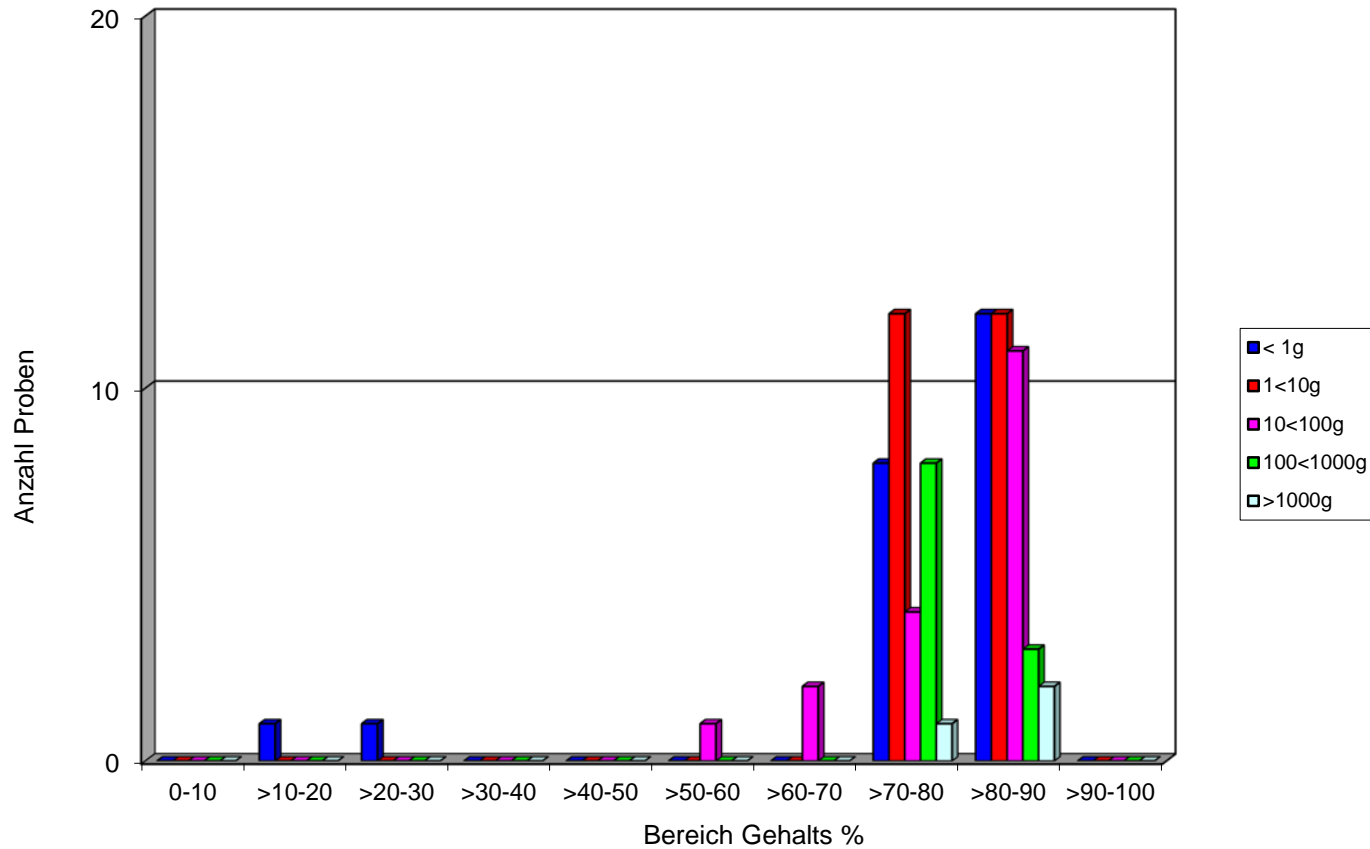
Thaipillen (WY), Methamphetamin Base, Gehaltswerte 2018

<i>Thaipillen (WY)</i>	<i>Gehalt Base %</i>	<i>Dosis pro Tablette (mg)</i>
<i>Gesamtgewicht (g) Total: 13 g</i>		
<i>Anzahl Untersuchungen Total: 1</i>		
<i>Median (%)</i>	15	14
<i>Oberes Quartil (75 %)</i>	15	14
<i>Unteres Quartil (25 %)</i>	15	14
<i>Minimum</i>	15	14
<i>Maximum</i>	15	14

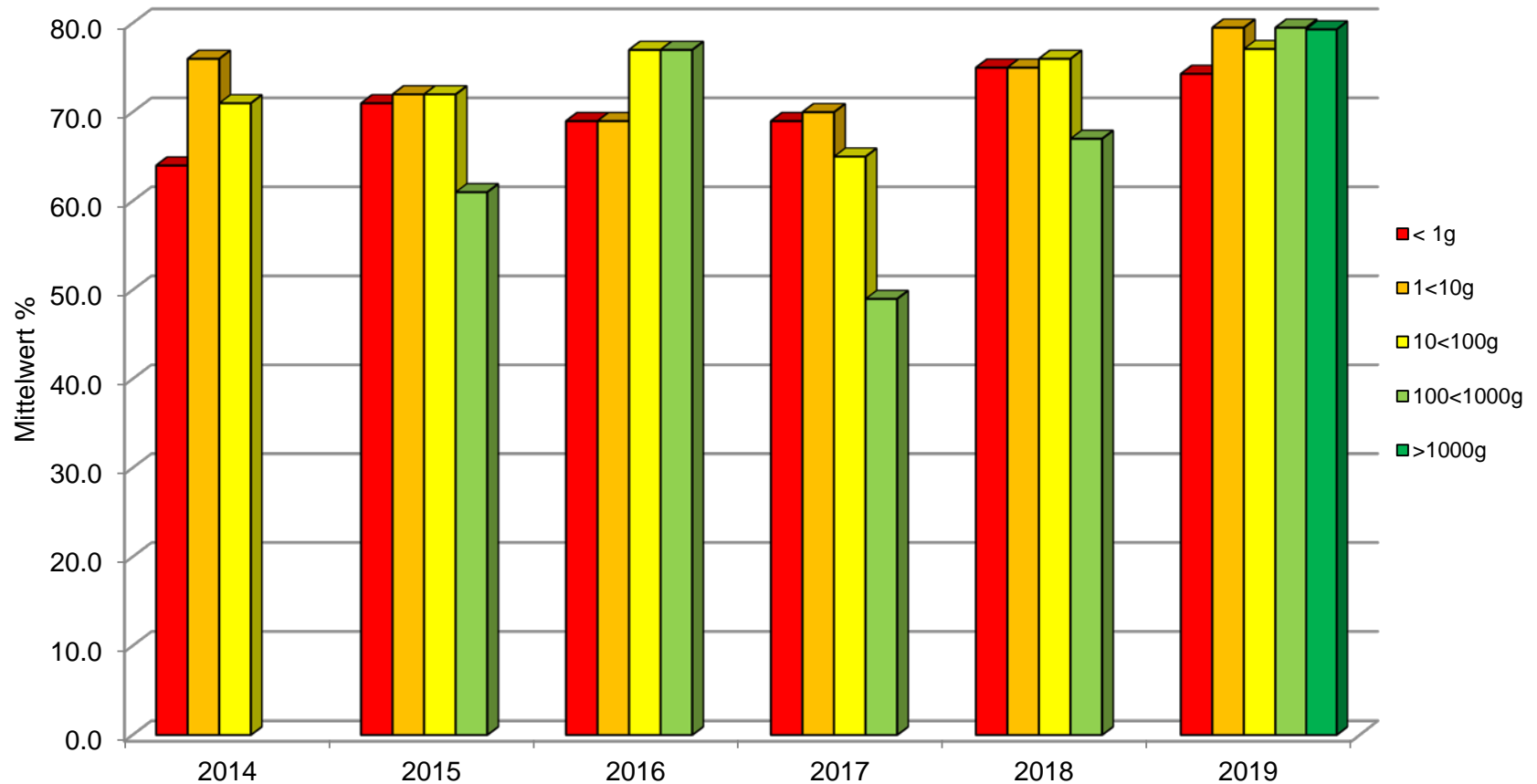
Methamphetamin Base, Gehaltswerte 2019



Methamphetamin Base, Detailübersicht 2019



Methamphetamin Base, Gehalte 2014 – 2019



MDMA Base (Pulver, Paste) 2019

Einzelkonfiskat- grösse (Gramm)	Anzahl Untersuchungen	Mittelwert Base (%)	Standard- abweichung (%CV)
< 1	14	66.5	± 24.4
1 < 10	15	70.4	± 19.7
10 < 100	15	72.8	± 14.9
100 < 1000	4	79.0	± 6.5
≥ 1000	26	71.2	± 15.7

MDMA Base (Pulver, Paste) 2018

Einzelkonfiskat- Grösse (Gramm)	Anzahl Untersuchungen	Mittelwert Base (%)	Standard- abweichung (%CV)
< 1	18	74	± 16
1 < 10	17	77	± 11
10 < 100	7	76	± 11
100 < 1000	8	82	± 2.8
≥ 1000	-		-

MDMA Base (Pulver und Paste), Gehaltswerte 2019

Mengenbereich (g)	< 1	1 < 10	10 < 100	100 < 1000	≥ 1000
Gesamtgewicht (g) Total: 41'753 g	7.8	100.6	506.5	2'307.5	38'830.8
Anzahl Untersuchungen Total: 194	14	15	15	4	26
Median (%)	76.5	78.2	77.0	77.5	77.6
Oberes Quartil (75 %)	82.5	82.2	82.6	80.3	78.1
Unteres Quartil (25 %)	58.8	72.8	71.9	76.2	76.3
Minimum	7.4	24.0	39.0	73.0	33.5
Maximum	84.0	84.0	84.0	84.0	80.6

MDMA Base (Pulver und Paste), Gehaltswerte 2018

Mengenbereich (g)	< 1	1 < 10	10 < 100	100 < 1000	≥ 1000
<i>Gesamtgewicht (g)</i> <i>Total: 5'142 g</i>	8.5	60	226	4848	-
<i>Anzahl Untersuchungen</i> <i>Total: 50</i>	18	17	7	8	-
<i>Median (%)</i>	79	79	81	83	-
<i>Oberes Quartil (75 %)</i>	82	83	82	83	-
<i>Unteres Quartil (25 %)</i>	77	77	78	79	-
<i>Minimum</i>	28	43	47	77	-
<i>Maximum</i>	85	85	83	84	-

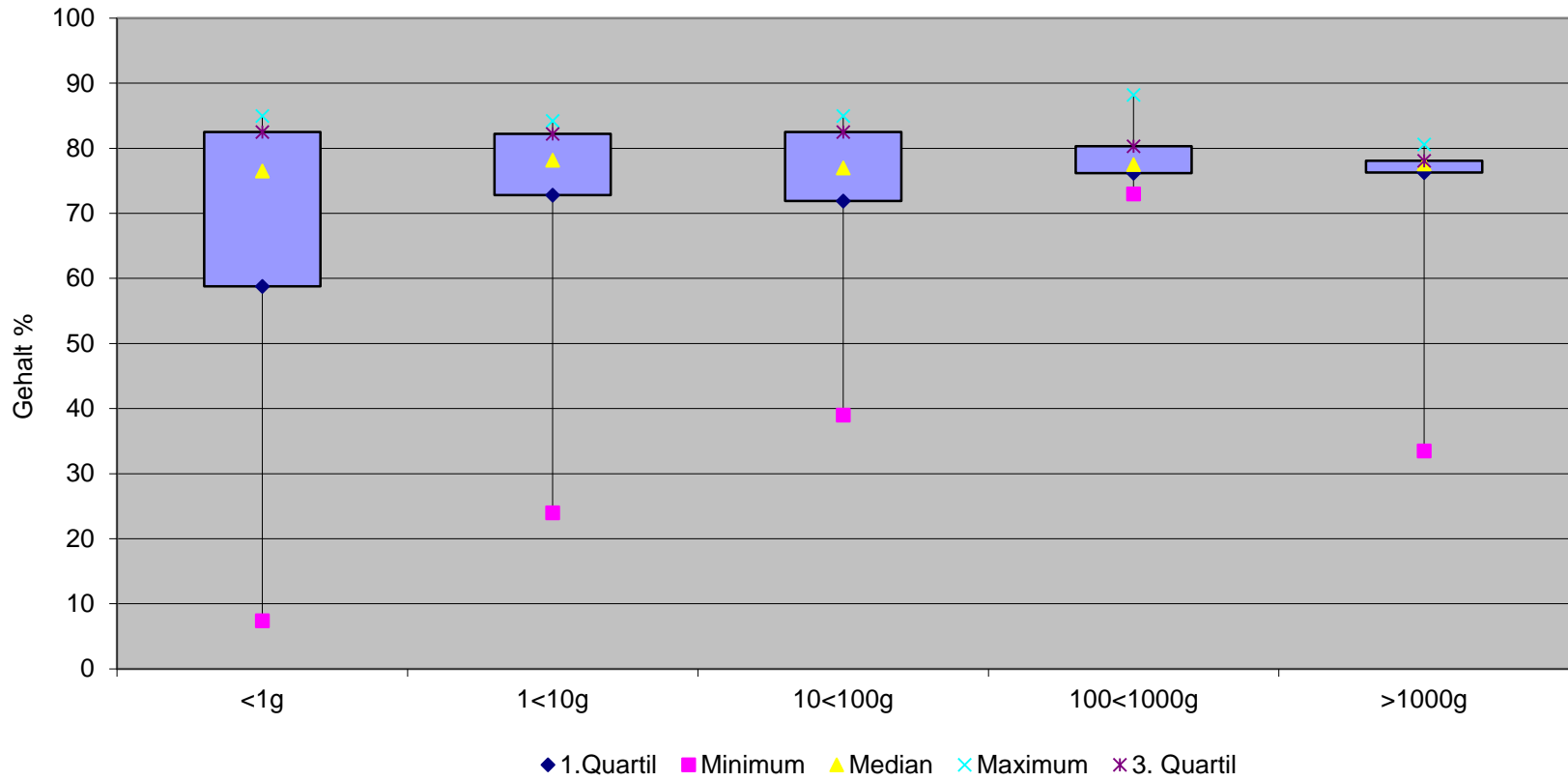
Ecstasy Tabletten, MDMA Base, Gehaltswerte 2019

XTC Tabletten	Gehalt Base %	Dosis pro Tablette (mg)
Gesamtgewicht (g) Total: 58'488.1 g		
Anzahl Untersuchungen Total: 122		
Median (%)	38.2	173.2
Oberes Quartil (75 %)	43.3	277.5
Unteres Quartil (25 %)	27.0	127.8
Minimum	0.1	0.6
Maximum	64.0	501.0

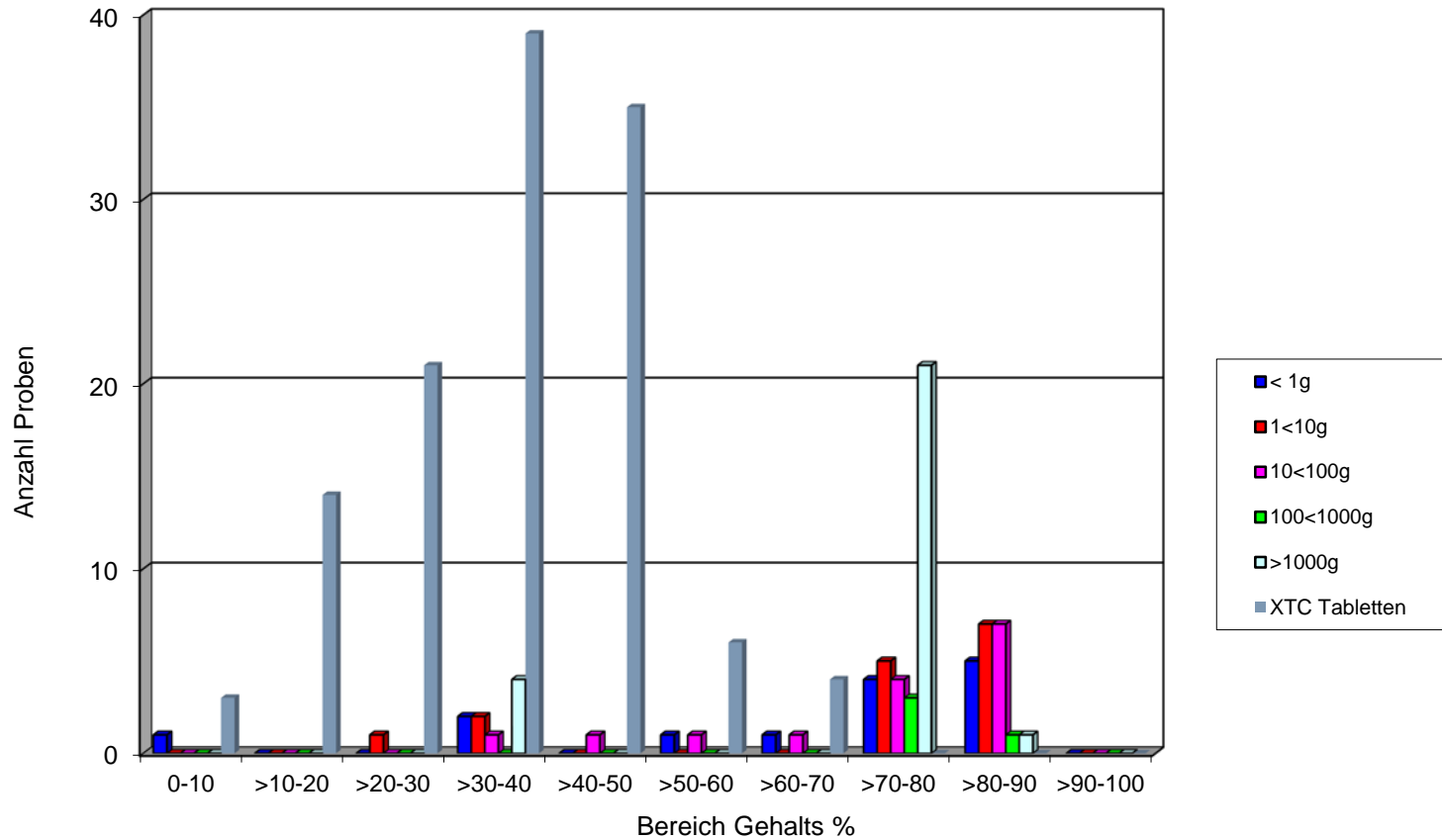
Ecstasy Tabletten, MDMA Base, Gehaltswerte 2018

XTC Tablette	Gehalt Base %	Dosis pro Tablette (mg)
<i>Gesamtgewicht (g)</i> <i>Total: 1'036 g</i>		
<i>Anzahl Untersuchungen</i> <i>Total: 27</i>		
<i>Median (%)</i>	33	109
<i>Oberes Quartil (75 %)</i>	39	153
<i>Unteres Quartil (25 %)</i>	31	72
<i>Minimum</i>	8.3	19
<i>Maximum</i>	46	208

MDMA Base, Gehaltswerte 2019



MDMA Base, Detailübersicht 2019



MDMA Base, Gehalte 2014 – 2019

