



Schweizerische
Gesellschaft
für Rechtsmedizin
SGRM

Société Suisse
de Médecine Légale
SSML

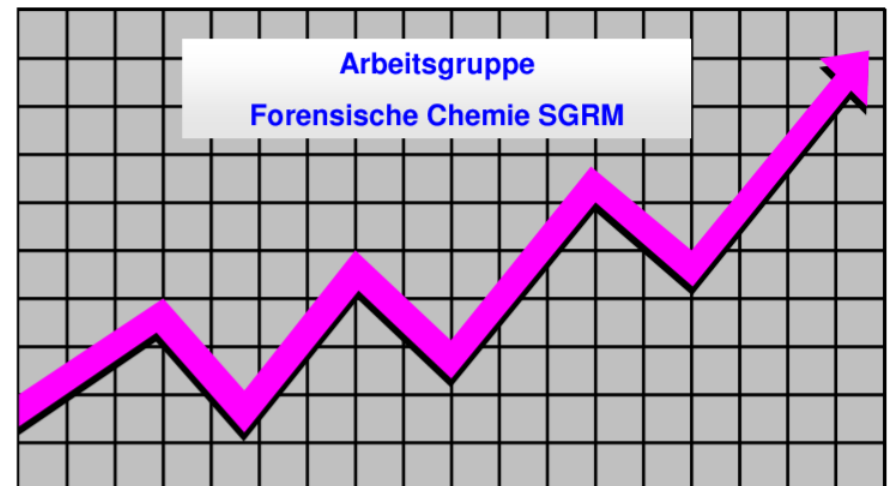
Società Svizzera
di Medicina Legale
SSML

SGRM Gruppe Forensische Chemie

Statistik 2022 Amphetamin, Metamphetamin, MDMA

<https://www.sgrm.ch/de/forensische-chemie-und-toxikologie/fachgruppe-forensische-chemie/statistiken-amphetamine/>

Auswertung:
IRM Bern
contact@irm.unibe.ch
031 684 0100



Anzahl Untersuchungen nach Laboratorien 2022

Labor	Amphetamin	Methamphetamin	MDMA	Total
BE	25	41	24	90
BS	24	8	26	58
CURML	-	-	-	-
ESC	10	11	12	33
SG	35	-	27	62
ZH	15	24	-	39
Total	109	84	89	282

Anzahl Untersuchungen nach Laboratorien 2021

<i>Labor</i>	<i>Amphetamin</i>	<i>Methamphetamin</i>	<i>MDMA</i>	<i>Total</i>
<i>BE</i>	<i>27</i>	<i>38</i>	<i>52</i>	<i>117</i>
<i>BS</i>	<i>5</i>	<i>6</i>	<i>28</i>	<i>39</i>
<i>CURML</i>	<i>5</i>	<i>-</i>	<i>-</i>	<i>5</i>
<i>ESC</i>	<i>9</i>	<i>28</i>	<i>28</i>	<i>65</i>
<i>SG</i>	<i>32</i>	<i>1</i>	<i>9</i>	<i>42</i>
<i>ZH</i>	<i>30</i>	<i>52</i>	<i>7</i>	<i>89</i>
<i>Total</i>	<i>108</i>	<i>125</i>	<i>124</i>	<i>357</i>

Amphetamin Base (Pulver, Paste) 2022

Einzelkonfiskatgrösse (Gramm)	Anzahl Untersuchungen	Mittelwert Base (%)	Standardabweichung (%CV)
< 1	15	30.4	± 29.1
1 < 10	35	18.7	± 19.3
10 < 100	42	23.3	± 23.6
100 < 1000	16	15.7	± 16.3
≥ 1000	1	9.7	-

Amphetamin Base (Pulver und Paste) 2021

<i>Einzelkonfiskatgrösse (Gramm)</i>	<i>Anzahl Untersuchungen</i>	<i>Mittelwert Base (%)</i>	<i>Standardabweichung (%CV)</i>
<i>< 1</i>	<i>16</i>	<i>27.5</i>	<i>± 19.6</i>
<i>1 < 10</i>	<i>24</i>	<i>20.7</i>	<i>± 17.2</i>
<i>10 < 100</i>	<i>47</i>	<i>25.7</i>	<i>± 24.1</i>
<i>100 < 1000</i>	<i>19</i>	<i>30.1</i>	<i>± 22.0</i>
<i>≥ 1000</i>	<i>-</i>	<i>-</i>	<i>-</i>

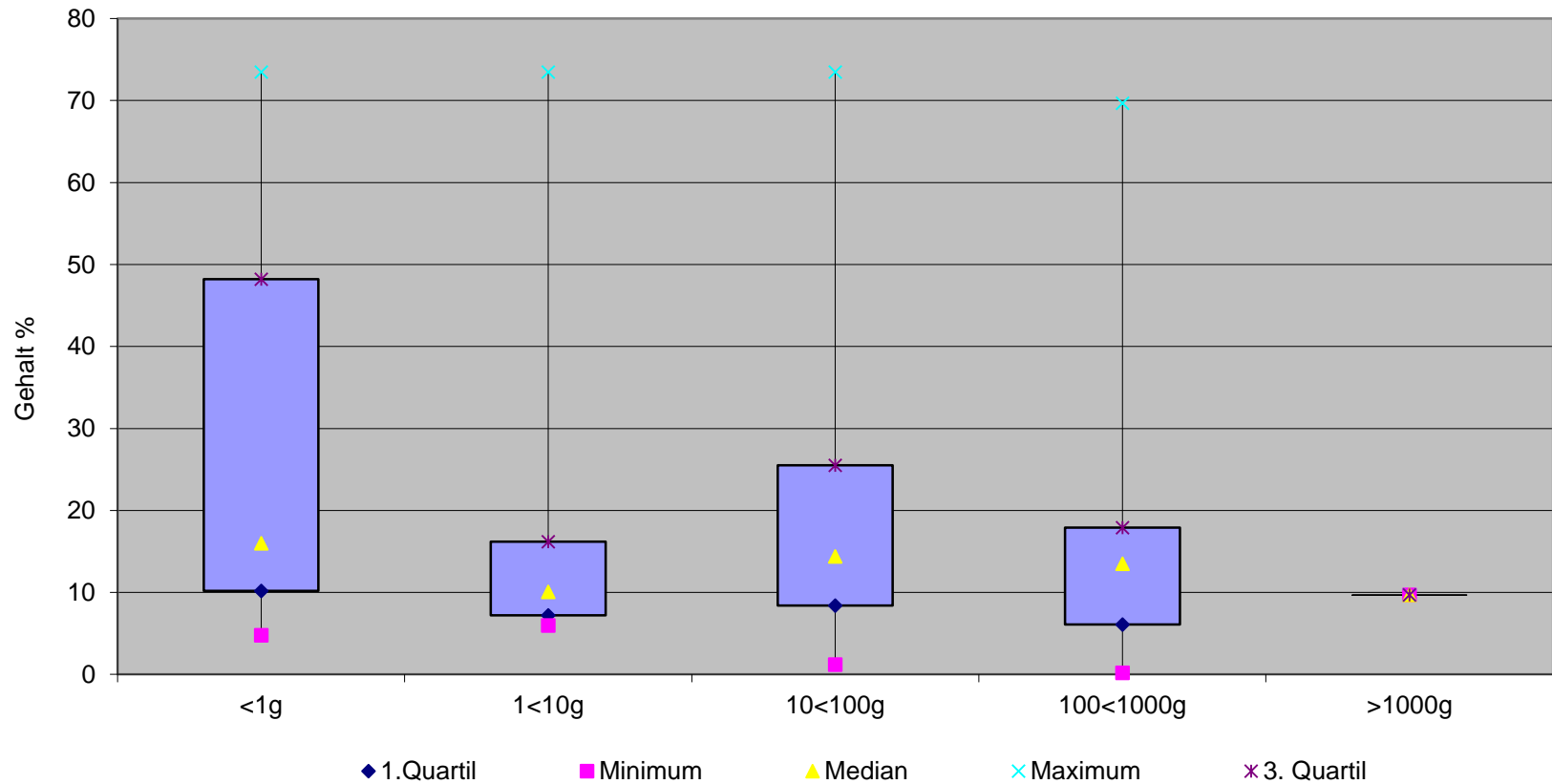
Amphetamin Base (Pulver, Paste) Gehaltswerte 2022

Mengenbereich (g)	< 1	1 < 10	10 < 100	100 < 1000	≥ 1000
Gesamtgewicht (g) Total: 9'488	11.6	153.2	2'011.2	6'274.8	1026
Anzahl Untersuchungen Total: 109	14	35	42	16	1
Median (%)	16.0	10.1	14.4	13.5	9.7
Oberes Quartil (75 %)	48.2	16.2	25.5	17.9	-
Unteres Quartil (25 %)	10.2	7.2	8.4	6.1	-
Minimum	4.8	6.0	1.2	0.2	-
Maximum	73.5	73.5	73.5	69.7	-

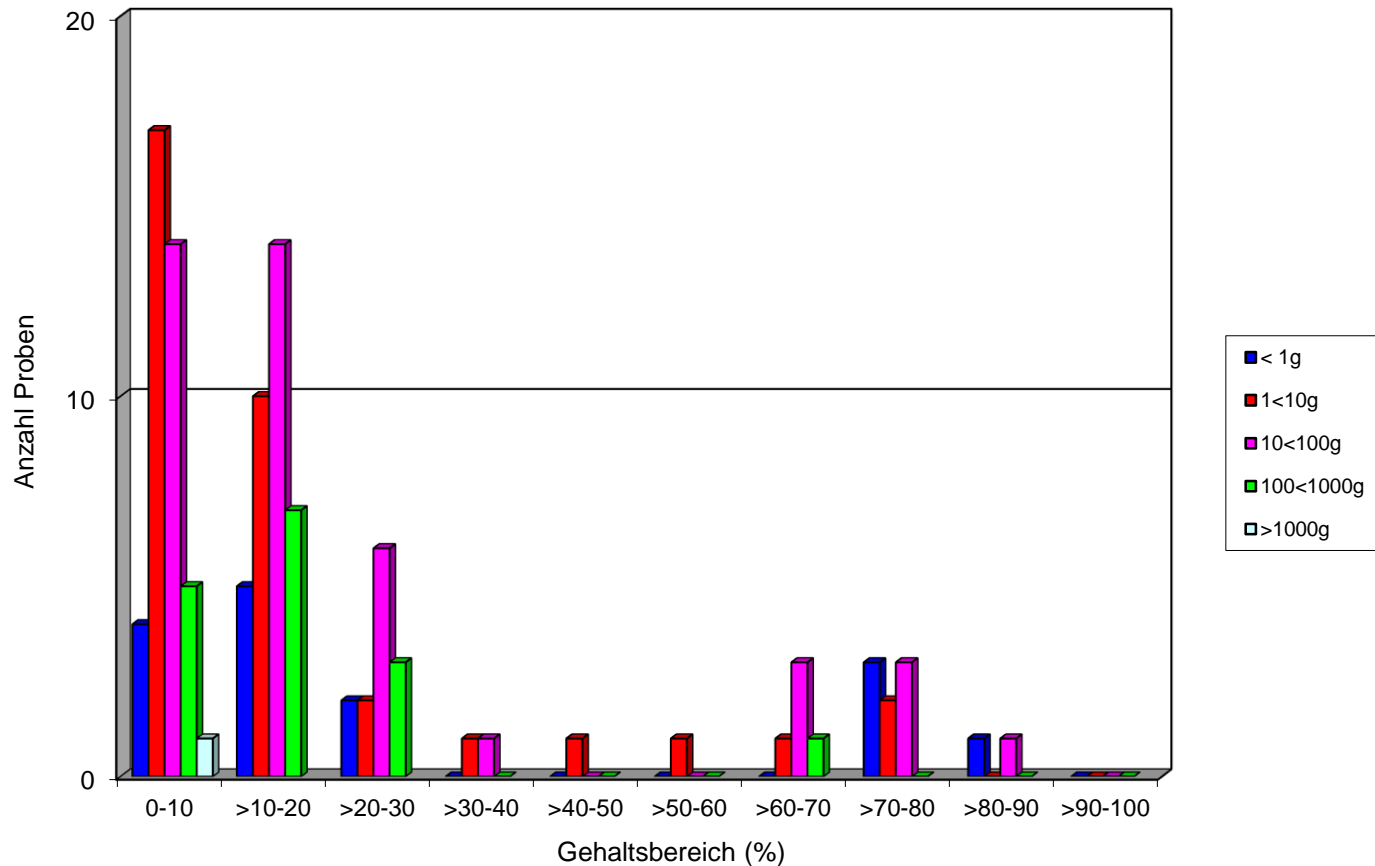
Amphetamin Base, (Pulver, Paste) Gehaltswerte 2021

Mengenbereich (g)	< 1	1 < 10	10 < 100	100 < 1000	≥ 1000
Gesamtgewicht (g) Total: 12'669	8.6	148.7	2'515.1	9'983.7	-
Anzahl Untersuchungen Total: 108	16	24	47	19	-
Median (%)	21.2	13.1	14.5	20.0	-
Oberes Quartil (75 %)	35.0	28.7	34.6	52.5	-
Unteres Quartil (25 %)	12.4	10.3	9.8	13.0	-
Minimum	7.8	4.5	2.1	5.0	-
Maximum	73.5	72.9	73.5	73.4	-

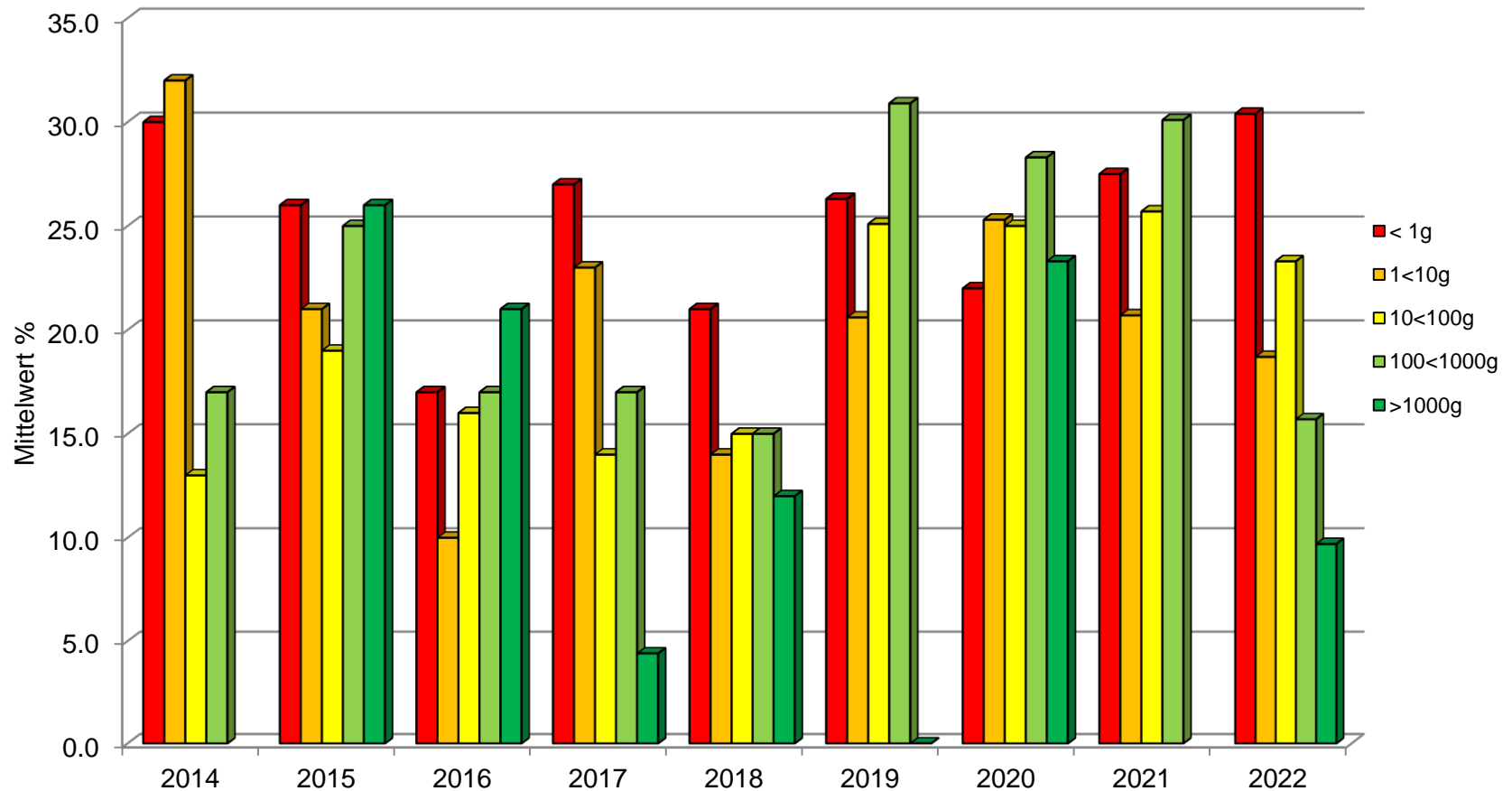
Amphetamin Base, Detailübersicht 2022



Amphetamin Base, Detailübersicht 2022



Amphetamin Base, Gehalte 2014 – 2022



Methamphetamin Base (Pulver) 2022

Einzelkonfiskat-grösse (Gramm)	Anzahl Untersuchungen	Mittelwert Base (%)	Standardabweichung (%CV)
< 1	10	71.2	± 24.9
1 < 10	26	78.5	± 12.2
10 < 100	27	76.3	± 10.3
100 < 1000	13	79.3	± 21.5
≥ 1000	-	-	-

Methamphetamin Base (Pulver) 2021

<i>Einzelkonfiskat-Grösse (Gramm)</i>	<i>Anzahl Untersuchungen</i>	<i>Mittelwert Base (%)</i>	<i>Standardabweichung (%CV)</i>
< 1	12	68.7	± 22.1
1 < 10	34	78.5	± 14.2
10 < 100	38	75.8	± 12.1
100 < 1000	23	67.2	± 27.5
≥ 1000	2	80.6	-

Methamphetamin Base (Pulver) Gehaltswerte 2022

Mengenbereich (g)	< 1	1 < 10	10 < 100	100 < 1000	≥ 1000
Gesamtgewicht (g) Total: 5'497.1	5.39	198.8	918.4	3'785.4	-
Anzahl Untersuchungen Total: 84	10	26	27	13	-
Median (%)	78.9	78.2	79.4	79.9	-
Oberes Quartil (75 %)	80.3	80.0	80.1	80.3	-
Unteres Quartil (25 %)	77.0	76.7	75.5	77.8	-
Minimum	0.5	75.3	26.3	2.4	-
Maximum	80.6	80.6	80.6	80.6	-

Methamphetamin Base (Pulver) Gehaltswerte 2021

Mengenbereich (g)	< 1	1 < 10	10 < 100	100 < 1000	≥ 1000
Gesamtgewicht (g) Total: 15'241.2	6.63	194.2	2'795.1	9'876.7	2'368.6
Anzahl Untersuchungen Total: 109	12	34	38	23	2
Median (%)	75.5	80.4	79.9	80.0	80.6
Oberes Quartil (75 %)	80.3	80.6	80.4	80.5	80.6
Unteres Quartil (25 %)	74.4	79.9	76.7	74.5	80.6
Minimum	15.9	1.1	18.1	4.7	80.6
Maximum	80.6	80.6	80.6	80.6	80.6

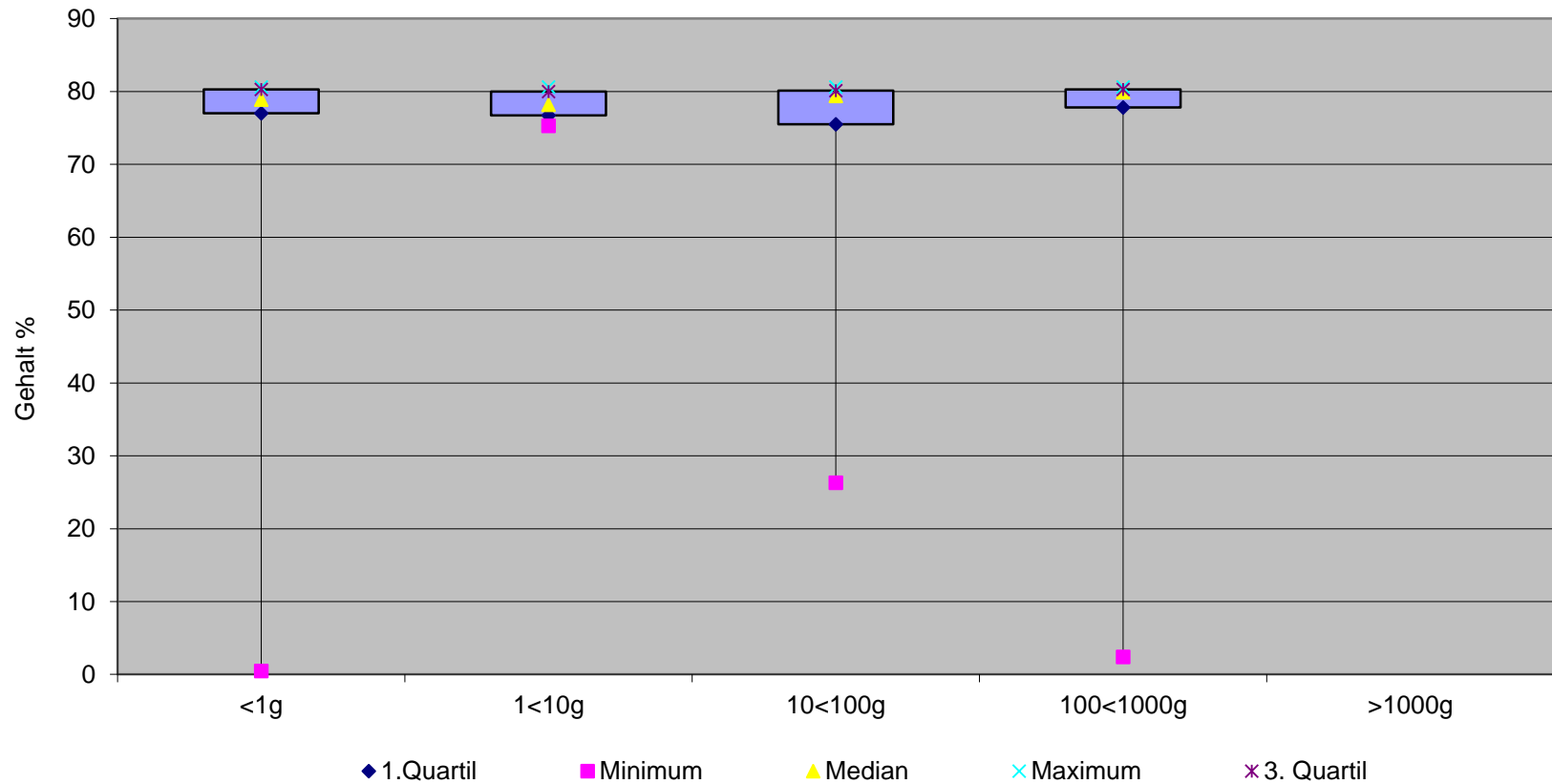
Thaipillen, Methamphetamin Base, Gehaltswerte 2022

Thaipillen (WY)	Gehalt Base %	Dosis pro Tablette (mg)
Gesamtgewicht (g) Total: 589.1		
Anzahl Untersuchungen Total: 8		
Median (%)	14.4	14.4
Oberes Quartil (75 %)	16.9	15.6
Unteres Quartil (25 %)	14.3	13.8
Minimum	2.1	2.1
Maximum	17.3	17.3

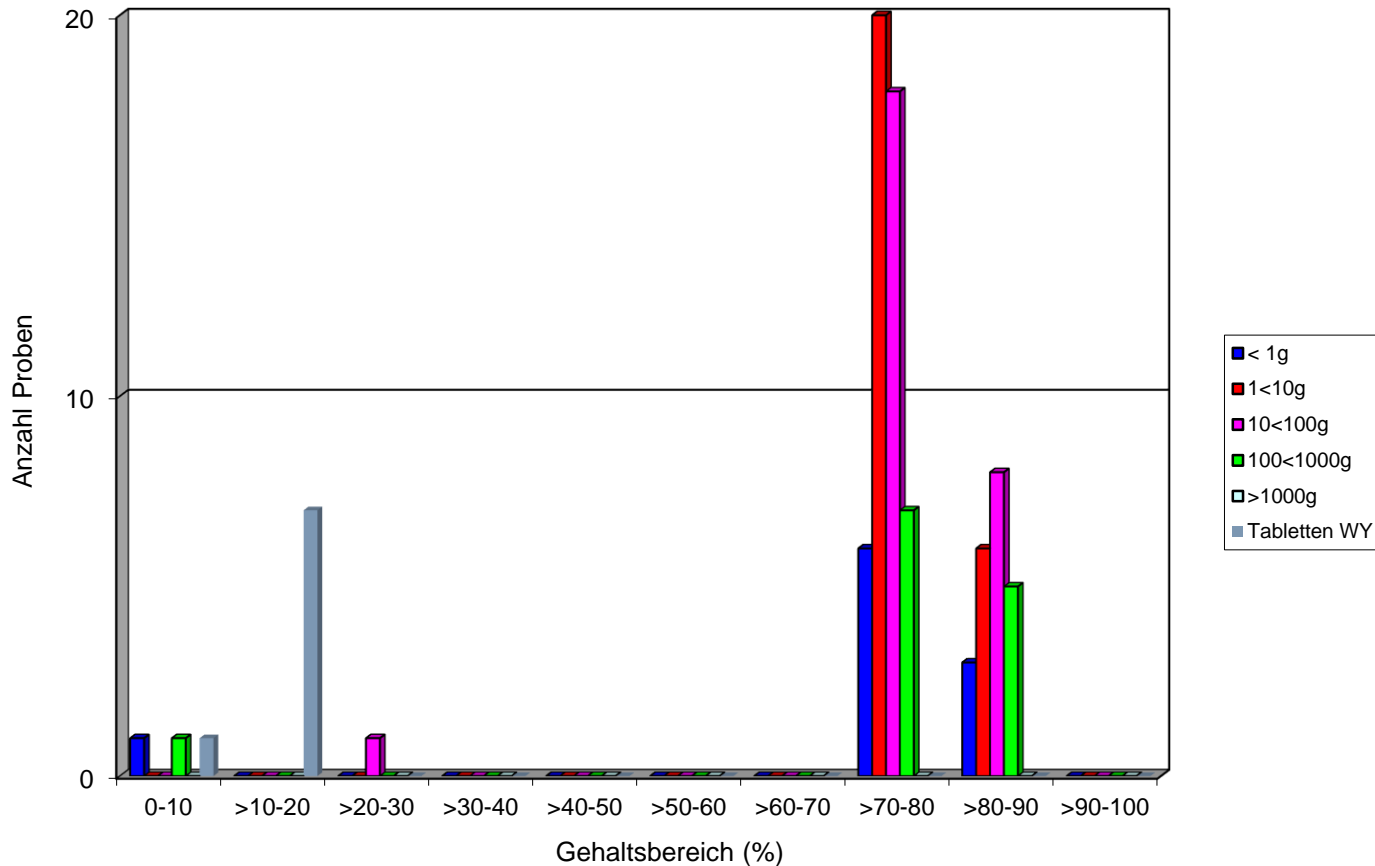
Thaipillen (WY), Methamphetamin Base, Gehaltswerte 2021

<i>Thaipillen (WY)</i>	<i>Gehalt Base %</i>	<i>Dosis pro Tablette (mg)</i>
<i>Gesamtgewicht (g) Total: 514.9</i>		
<i>Anzahl Untersuchungen Total: 16</i>		
<i>Median (%)</i>	16.6	16.0
<i>Oberes Quartil (75 %)</i>	21.1	18.9
<i>Unteres Quartil (25 %)</i>	13.5	12.4
<i>Minimum</i>	0.6	0.5
<i>Maximum</i>	25.6	23.3

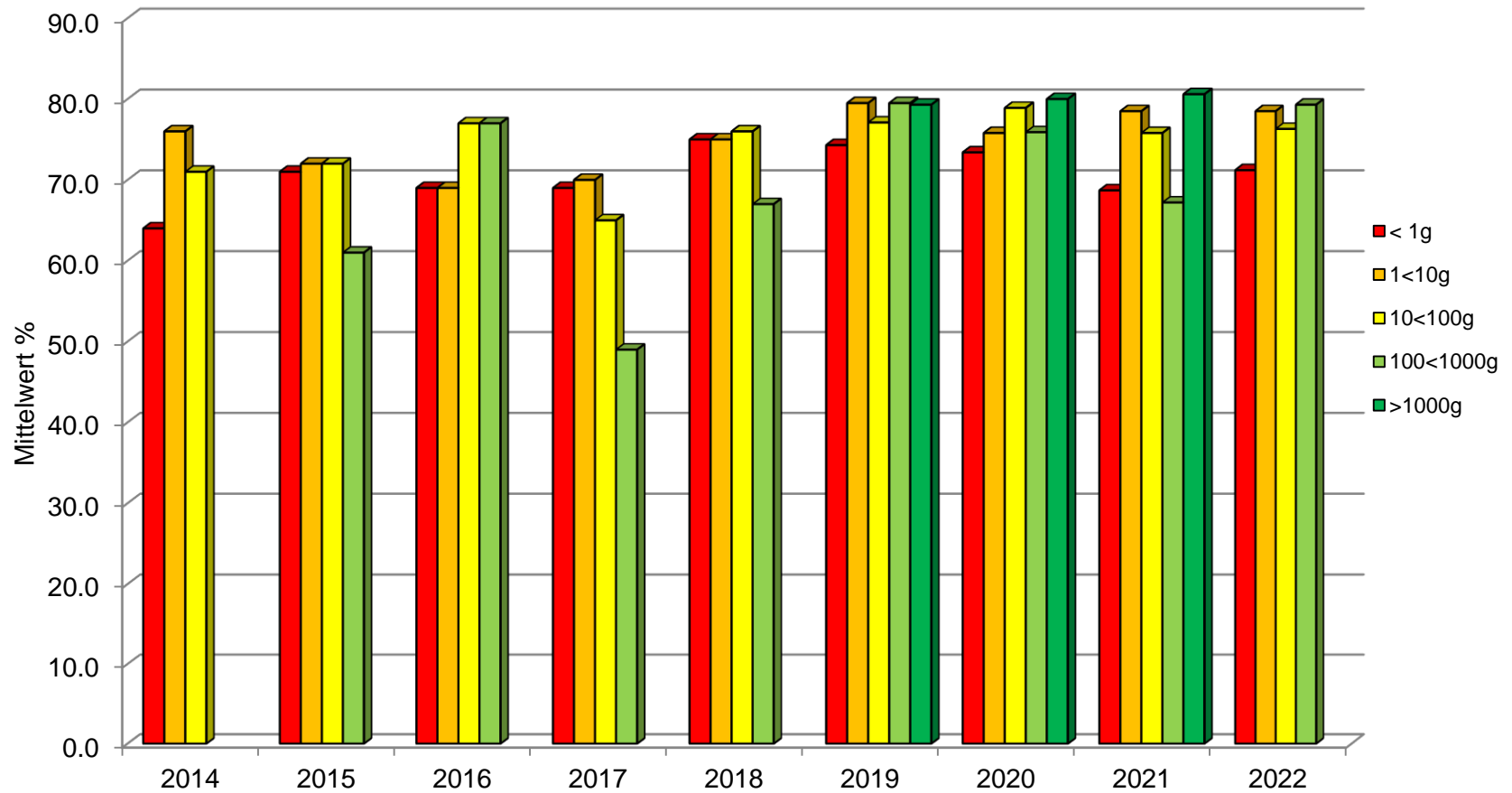
Methamphetamin Base, Gehaltswerte 2022



Methamphetamin Base, Detailübersicht 2022



Methamphetamin Base, Gehalte 2014 – 2022



MDMA Base (Pulver, Paste) 2022

Einzelkonfiskat- grösse (Gramm)	Anzahl Untersuchungen	Mittelwert Base (%)	Standard- abweichung (%CV)
< 1	15	68.9	± 22.5
1 < 10	14	56.7	± 33.8
10 < 100	7	55.1	± 33.3
100 < 1000	3	79.7	± 0.9
≥ 1000	-	-	-

MDMA Base (Pulver, Paste) 2021

<i>Einzelkonfiskat- Grösse (Gramm)</i>	<i>Anzahl Untersuchungen</i>	<i>Mittelwert Base (%)</i>	<i>Standard- abweichung (%CV)</i>
< 1	15	72.1	± 12.7
1 < 10	17	65.0	± 21.8
10 < 100	12	61.0	± 23.7
100 < 1000	11	68.4	± 19.8
≥ 1000	3	71.5	± 8.7

MDMA Base (Pulver und Paste), Gehaltswerte 2022

Mengenbereich (g)	< 1	1 < 10	10 < 100	100 < 1000	≥ 1000
Gesamtgewicht (g) Total: 803.5	7.0	48.4	243.4	505.8	-
Anzahl Untersuchungen Total: 39	15	14	7	3	-
Median (%)	77.3	76.6	77.3	76.5	-
Oberes Quartil (75 %)	78.5	76.9	78.6	80.1	-
Unteres Quartil (25 %)	75.4	22.9	35.5	79.2	-
Minimum	2.9	4.7	0.1	79.0	-
Maximum	80.0	80.2	80.0	80.8	-

MDMA Base (Pulver und Paste), Gehaltswerte 2021

Mengenbereich (g)	< 1	1 < 10	10 < 100	100 < 1000	≥ 1000
<i>Gesamtgewicht (g)</i> <i>Total: 8'895.1</i>	9.4	79.2	414.6	4'902.2	3'489.7
<i>Anzahl Untersuchungen</i> <i>Total: 60</i>	15	17	12	11	3
<i>Median (%)</i>	75.8	75.2	73.1	76.2	76.1
<i>Oberes Quartil (75 %)</i>	76.4	76.5	76.5	78.8	76.5
<i>Unteres Quartil (25 %)</i>	73.2	69.3	47.8	73.1	68.7
<i>Minimum</i>	26.6	17.2	19.5	28.7	61.4
<i>Maximum</i>	78.0	83.3	83.2	82.5	77.0

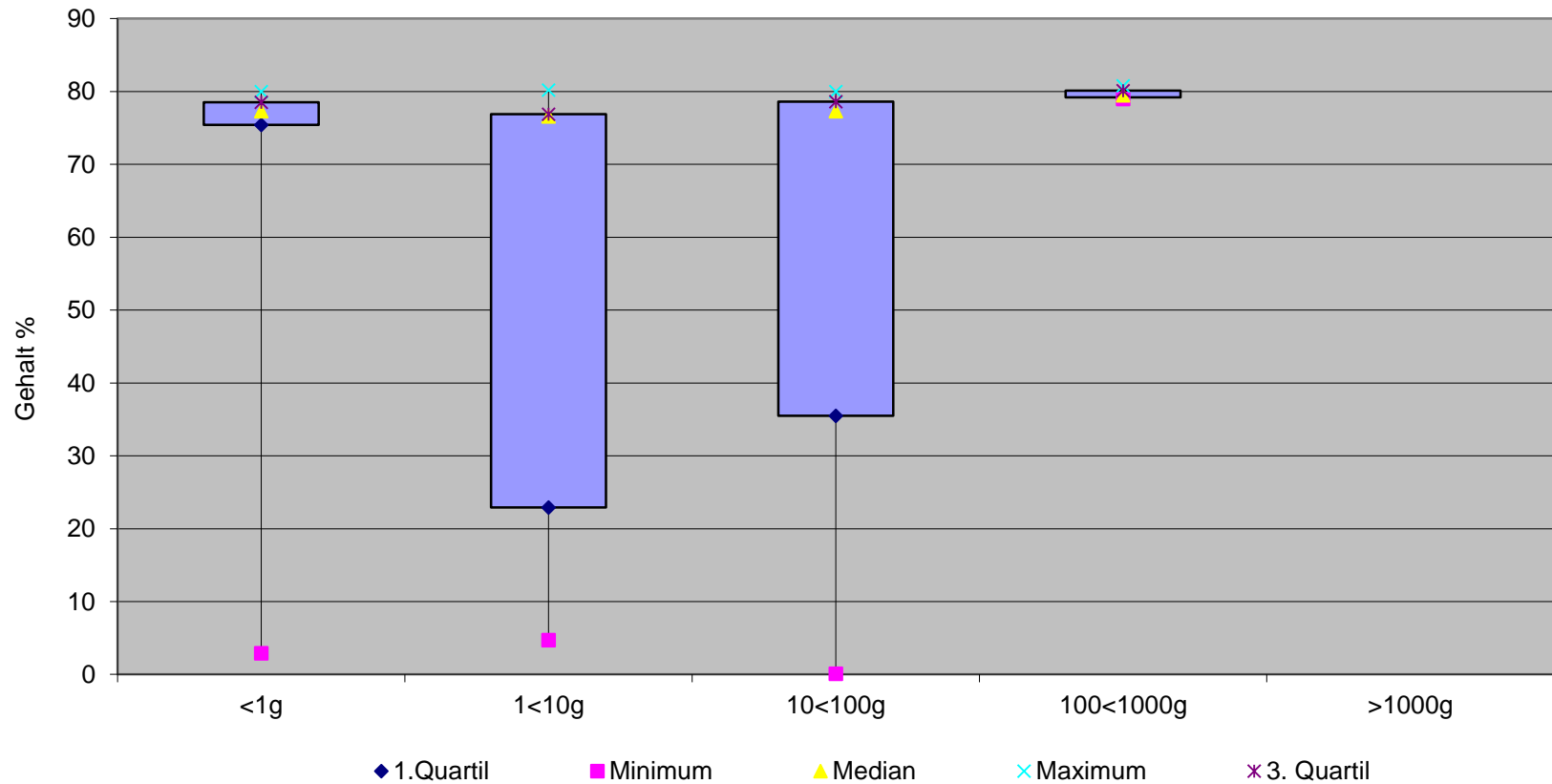
Ecstasy Tabletten, MDMA Base, Gehaltswerte 2022

XTC Tabletten	Gehalt Base %	Dosis pro Tablette (mg)
Gesamtgewicht (g) Total: 13'448.4		
Anzahl Untersuchungen Total: 50		
Median (%)	32.6	154.0
Oberes Quartil (75 %)	39.0	201.2
Unteres Quartil (25 %)	21.4	104.1
Minimum	9.6	40.5
Maximum	80.9	560.0

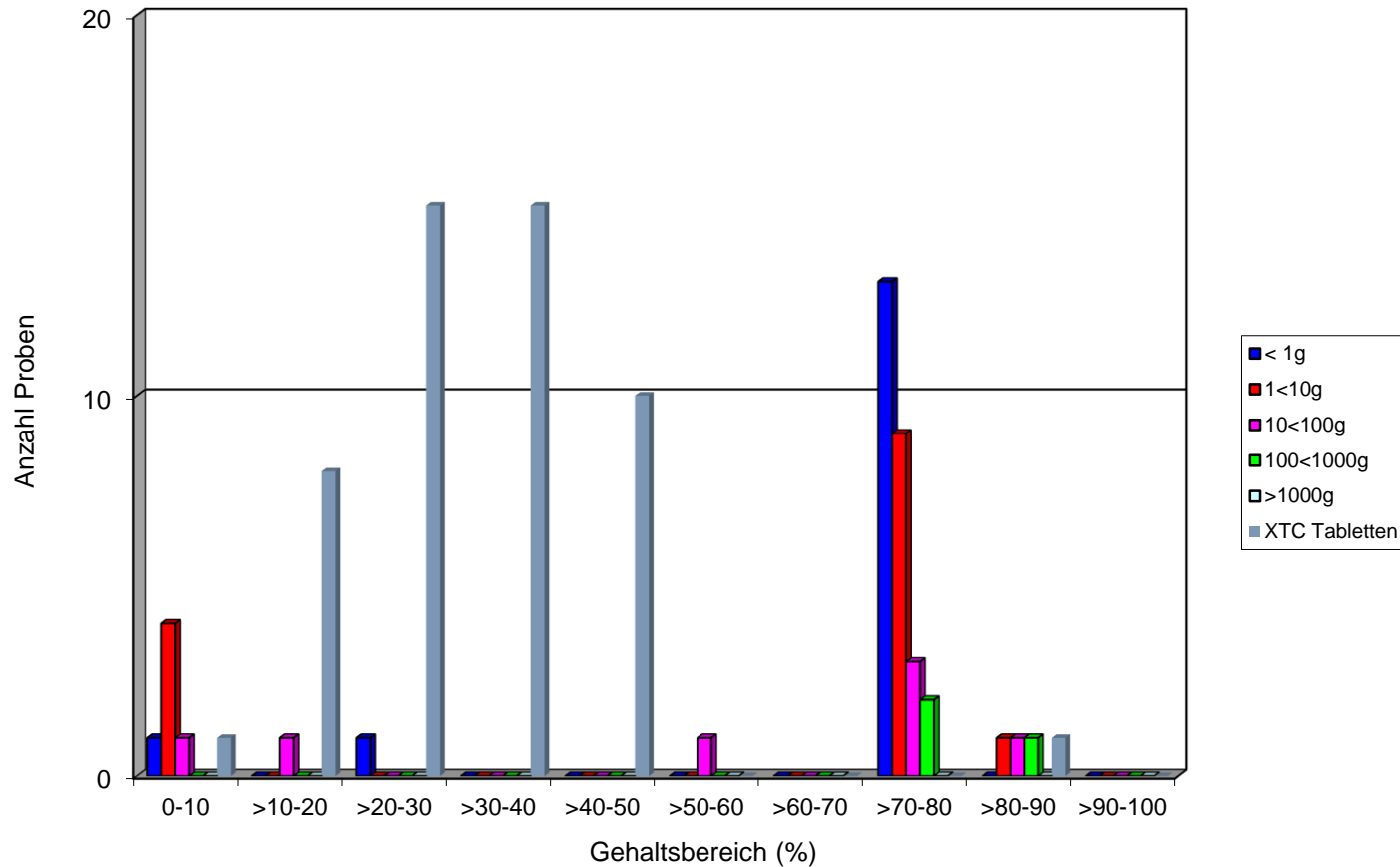
Ecstasy Tabletten, MDMA Base, Gehaltswerte 2021

<i>XTC Tablette</i>	<i>Gehalt Base %</i>	<i>Dosis pro Tablette (mg)</i>
<i>Gesamtgewicht (g) Total: 6'755.9</i>		
<i>Anzahl Untersuchungen Total: 66</i>		
<i>Median (%)</i>	<i>31.7</i>	<i>162.0</i>
<i>Oberes Quartil (75 %)</i>	<i>39.1</i>	<i>328.1</i>
<i>Unteres Quartil (25 %)</i>	<i>24.4</i>	<i>115.0</i>
<i>Minimum</i>	<i>7.5</i>	<i>67.3</i>
<i>Maximum</i>	<i>55.0</i>	<i>536.6</i>

MDMA Base, Gehaltswerte 2022



MDMA Base, Detailübersicht 2022



MDMA Base, Gehalte 2014 – 2022

