



Schweizerische
Gesellschaft
für Rechtsmedizin
SGRM

Société Suisse
de Médecine Légale
SSML

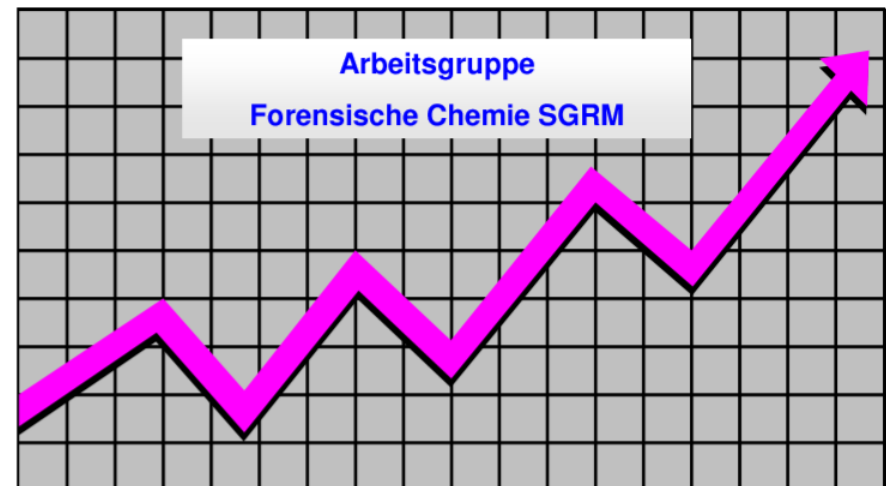
Società Svizzera
di Medicina Legale
SSML

SGRM Gruppe Forensische Chemie

Statistik 2024 Amphetamin, Metamphetamin, MDMA

<https://www.sgrm.ch/de/forensische-chemie-und-toxikologie/fachgruppe-forensische-chemie/statistiken-amphetamine/>

Auswertung:
IRM Bern
contact@irm.unibe.ch
031 684 0100



Anzahl Untersuchungen nach Laboratorien 2024

Labor	Amphetamin	Methamphetamin	MDMA	Total
BE	7	22	52	81
BS	24	8	21	53
CURML	1	2	3	6
ESC	4	6	50	60
SG	62	6	32	100
ZH	13	46	4	63
Total	111	90	162	363

Anzahl Untersuchungen nach Laboratorien 2023

<i>Labor</i>	<i>Amphetamin</i>	<i>Methamphetamin</i>	<i>MDMA</i>	<i>Total</i>
<i>BE</i>	<i>23</i>	<i>18</i>	<i>25</i>	<i>66</i>
<i>BS</i>	<i>4</i>	<i>2</i>	<i>16</i>	<i>23</i>
<i>CURML</i>	<i>1</i>	<i>0</i>	<i>3</i>	<i>4</i>
<i>ESC</i>	<i>8</i>	<i>6</i>	<i>19</i>	<i>33</i>
<i>SG</i>	<i>21</i>	<i>3</i>	<i>42</i>	<i>67</i>
<i>ZH</i>	<i>18</i>	<i>49</i>	<i>1</i>	<i>68</i>
<i>Total</i>	<i>75</i>	<i>78</i>	<i>106</i>	<i>259</i>

Amphetamin Base (Pulver, Paste) 2024

Einzelkonfiskatgrösse (Gramm)	Anzahl Untersuchungen	Mittelwert Base (%)	Standardabweichung (%CV)
< 1	10	42.6	± 29.8
1 < 10	42	21.4	± 17.8
10 < 100	35	26.6	± 23.5
100 < 1000	18	19.4	± 10.7
≥ 1000	6	22.2	± 2.4

Amphetamin Base (Pulver und Paste) 2023

<i>Einzelkonfiskatgrösse (Gramm)</i>	<i>Anzahl Untersuchungen</i>	<i>Mittelwert Base (%)</i>	<i>Standardabweichung (%CV)</i>
<i>< 1</i>	<i>7</i>	<i>40.8</i>	<i>± 33.1</i>
<i>1 < 10</i>	<i>23</i>	<i>27.7</i>	<i>± 23.1</i>
<i>10 < 100</i>	<i>28</i>	<i>31.8</i>	<i>± 26.4</i>
<i>100 < 1000</i>	<i>13</i>	<i>28.9</i>	<i>± 25.5</i>
<i>≥ 1000</i>	<i>2</i>	<i>34.4</i>	<i>± 34.8</i>

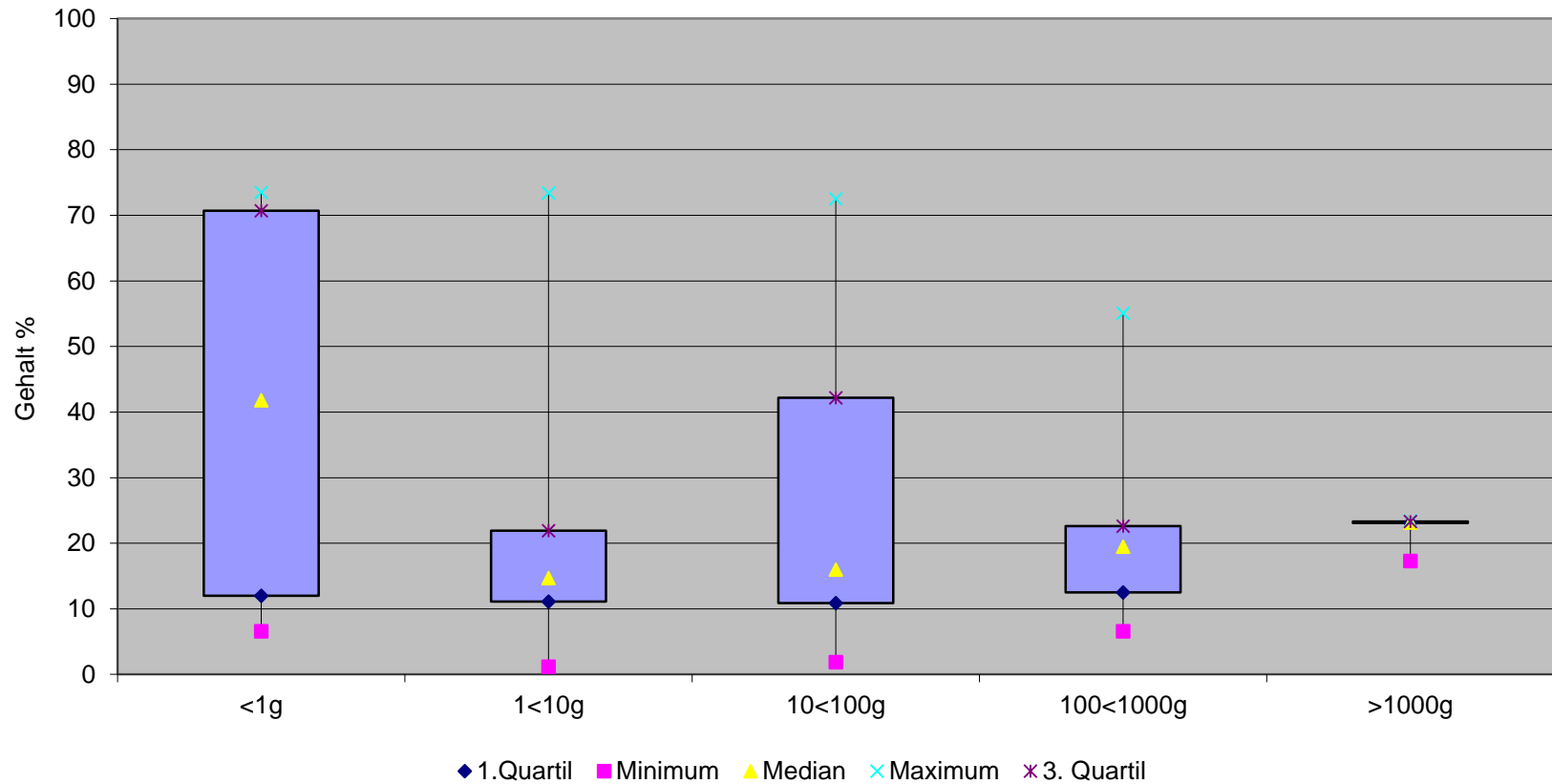
Amphetamin Base (Pulver, Paste) Gehaltswerte 2024

Mengenbereich (g)	< 1	1 < 10	10 < 100	100 < 1000	≥ 1000
Gesamtgewicht (g) Total: 18'705	5.8	174.1	1'763.2	10'729.8	6'030
Anzahl Untersuchungen Total: 111	10	42	35	18	6
Median (%)	41.8	14.7	16.0	19.5	23.2
Oberes Quartil (75 %)	70.7	21.9	42.2	22.6	23.3
Unteres Quartil (25 %)	12.0	11.1	10.9	12.5	23.1
Minimum	6.6	1.2	1.9	6.6	17.3
Maximum	73.5	73.4	72.5	55.1	23.4

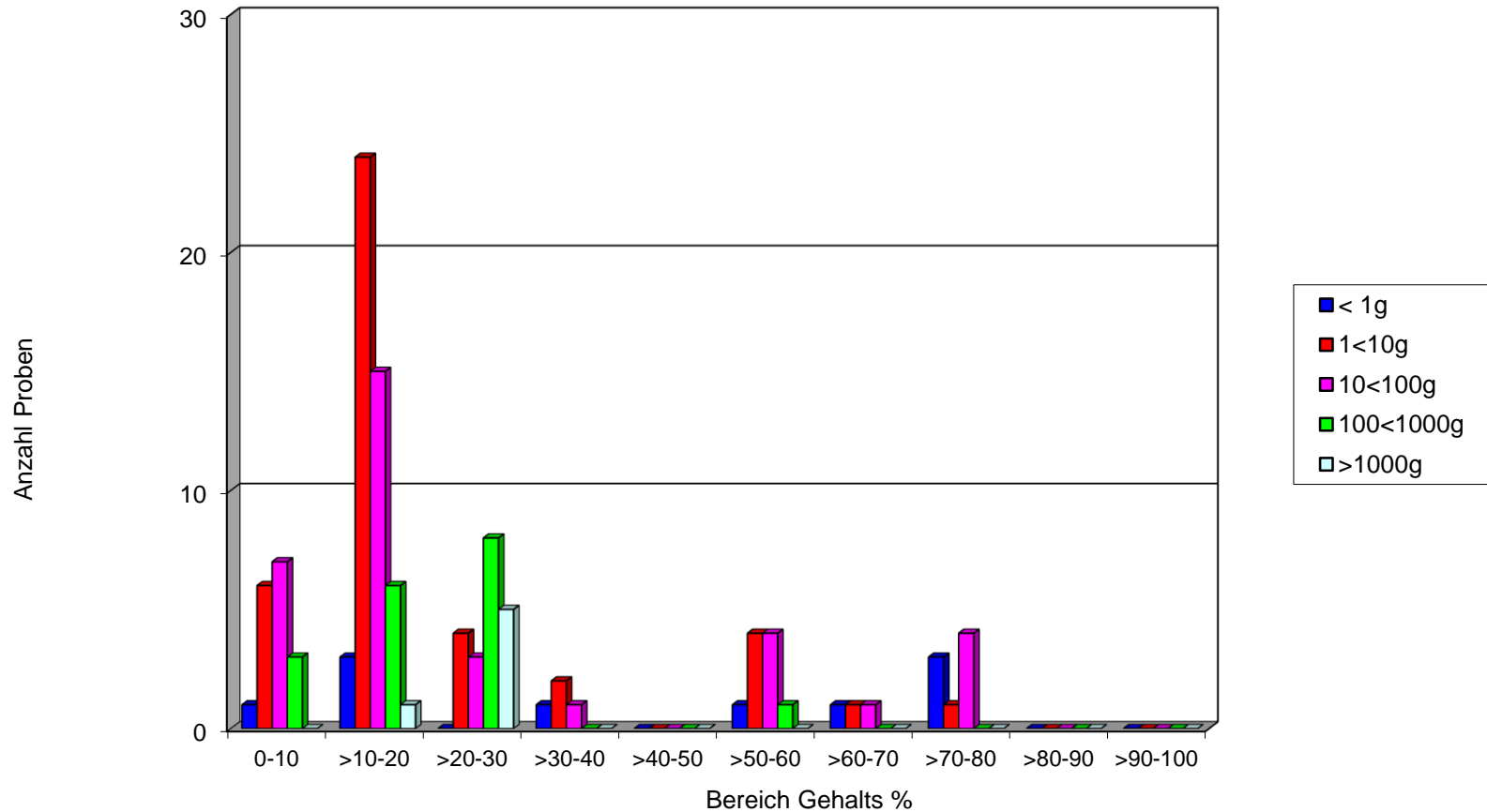
Amphetamin Base, (Pulver, Paste) Gehaltswerte 2023

Mengenbereich (g)	< 1	1 < 10	10 < 100	100 < 1000	≥ 1000
Gesamtgewicht (g) Total: 9'488	13.5	76.6	1037.4	3540.1	2032.4
Anzahl Untersuchungen Total: 109	7	23	28	13	2
Median (%)	27.2	17.6	24.4	20.6	34.3
Oberes Quartil (75 %)	74.1	56.3	58.6	25.4	46.2
Unteres Quartil (25 %)	12.7	9.0	11.2	14.0	22.0
Minimum	6.8	5.0	1.5	6.7	9.7
Maximum	73.5	61.8	73.2	73.1	59.0

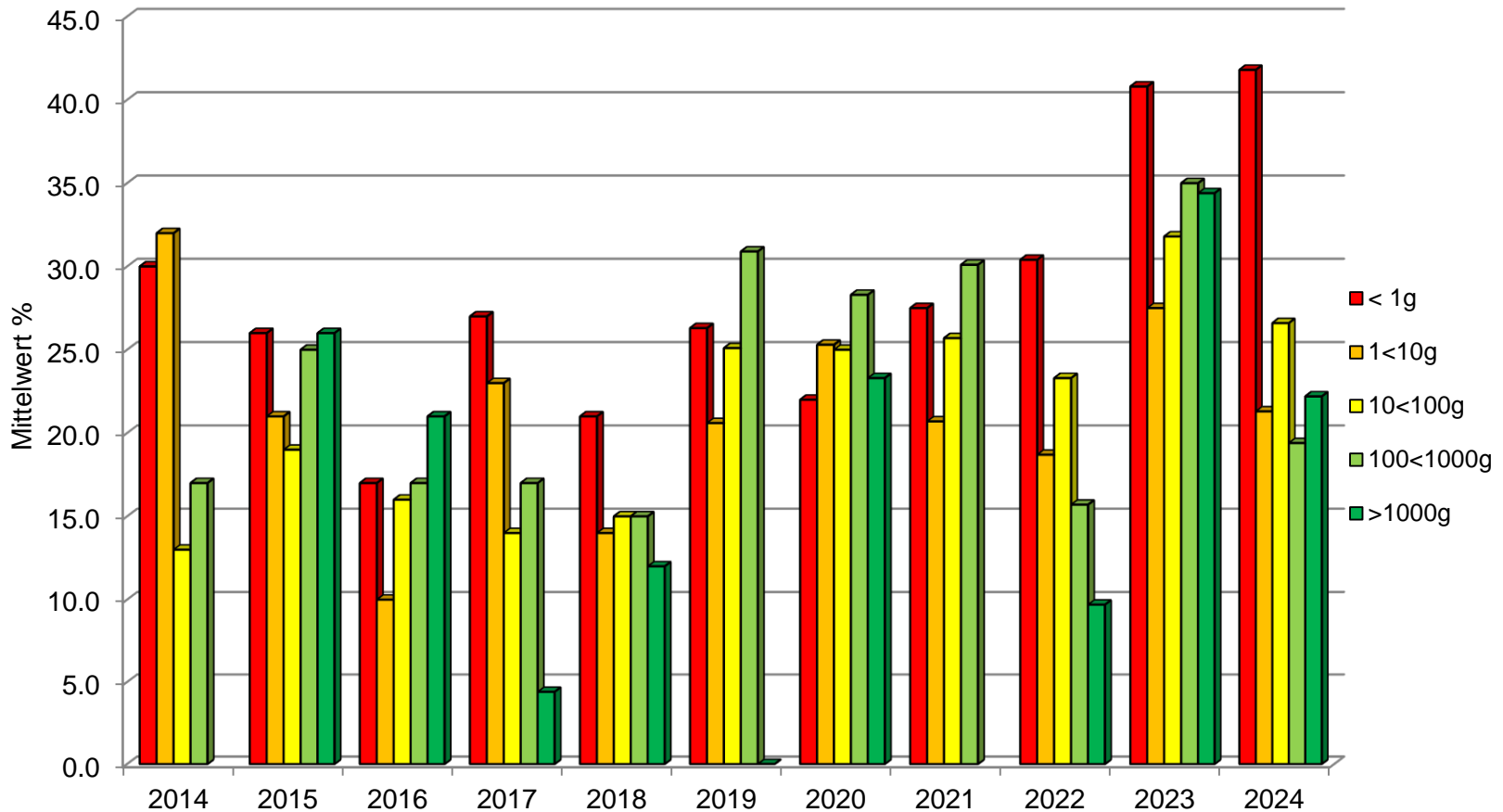
Amphetamin Base, Gehaltswerte 2024



Amphetamin Base, Detailübersicht 2024



Amphetamin Base, Gehalte 2014 – 2024



Methamphetamin Base (Pulver) 2024

Einzelkonfiskat-grösse (Gramm)	Anzahl Untersuchungen	Mittelwert Base (%)	Standard-abweichung (%CV)
< 1	14	65.0	± 27.5
1 < 10	28	75.2	± 14.4
10 < 100	28	79.3	± 1.7
100 < 1000	16	76.9	± 10.4
≥ 1000	-	-	-

Methamphetamin Base (Pulver) 2023

<i>Einzelkonfiskat-Grösse (Gramm)</i>	<i>Anzahl Untersuchungen</i>	<i>Mittelwert Base (%)</i>	<i>Standard-abweichung (%CV)</i>
< 1	12	73.1	± 20.2
1 < 10	24	77.4	± 5.7
10 < 100	35	75.1	± 10.7
100 < 1000	2	80.3	± 0.5
≥ 1000	-	-	-

Methamphetamin Base (Pulver) Gehaltswerte 2024

Mengenbereich (g)	< 1	1 < 10	10 < 100	100 < 1000	≥ 1000
Gesamtgewicht (g) Total: 9'041.9	77.4	219.8	1330.8	7414.0	-
Anzahl Untersuchungen Total: 86	14	28	28	16	-
Median (%)	78.1	79.8	79.9	79.9	-
Oberes Quartil (75 %)	79.8	80.1	80.3	80.1	-
Unteres Quartil (25 %)	74.0	75.6	79.4	79.4	-
Minimum	0.2	4.7	72.9	38.6	-
Maximum	80.1	80.6	80.6	80.6	-

Methamphetamin Base (Pulver) Gehaltswerte 2023

Mengenbereich (g)	< 1	1 < 10	10 < 100	100 < 1000	≥ 1000
Gesamtgewicht (g) Total: 5'497.1	9.5	190.0	2267.3	1092.3	-
Anzahl Untersuchungen Total: 84	12	24	35	2	-
Median (%)	79.7	80.1	78.8	80.3	-
Oberes Quartil (75 %)	80.1	80.3	80.4	80.4	-
Unteres Quartil (25 %)	77.4	78.2	74.8	80.1	-
Minimum	9.1	62.3	25.5	79.9	-
Maximum	80.3	80.6	80.6	80.6	-

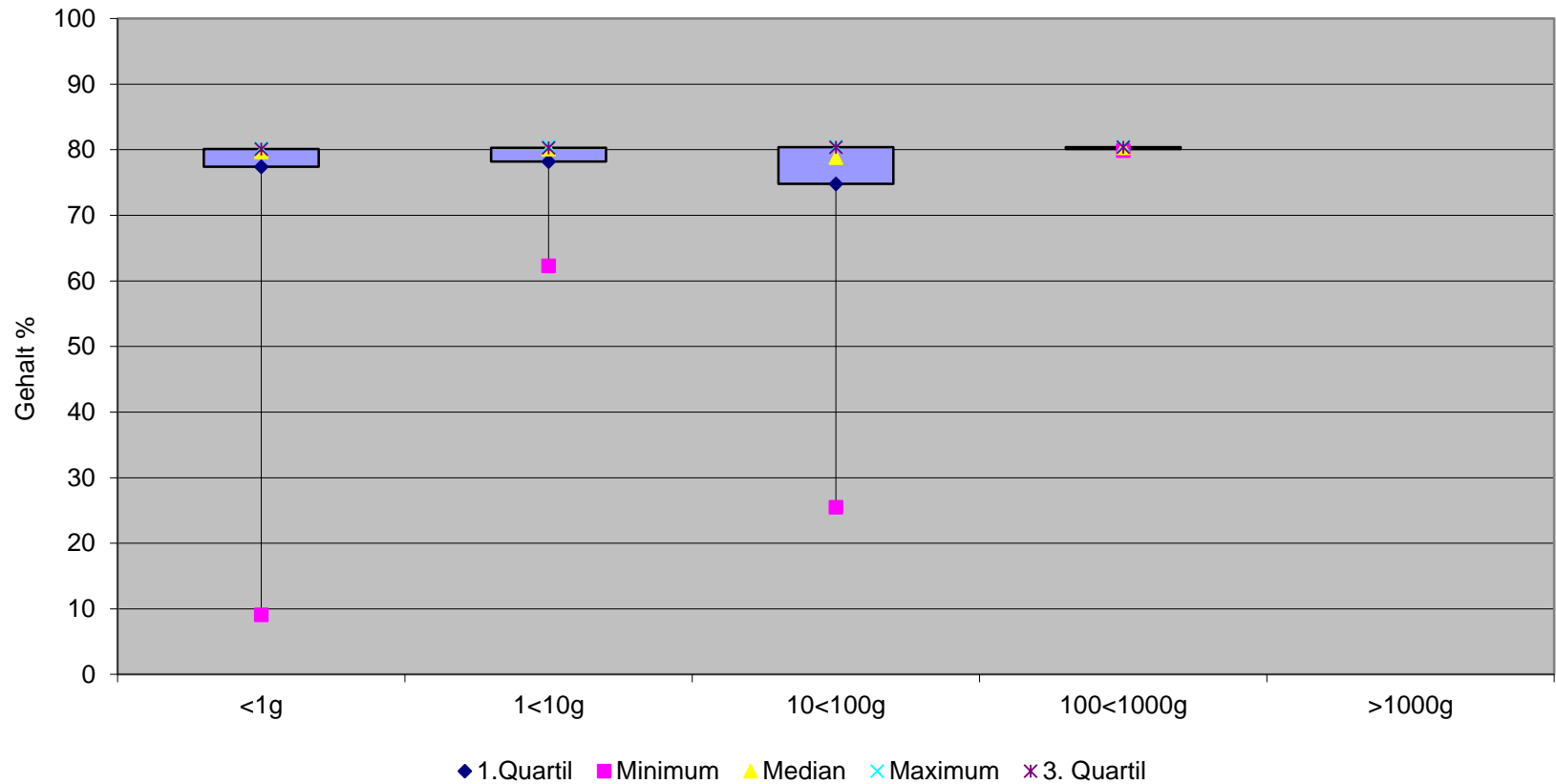
Thaipillen, Methamphetamin Base, Gehaltswerte 2024

Thaipillen (WY)	Gehalt Base %	Dosis pro Tablette (mg)
Gesamtgewicht (g) Total: 27.1		
Anzahl Untersuchungen Total: 4		
Median (%)	8.8	6.8
Oberes Quartil (75 %)	11.5	10.3
Unteres Quartil (25 %)	4.4	3.5
Minimum	4.3	2.8
Maximum	11.5	11.7

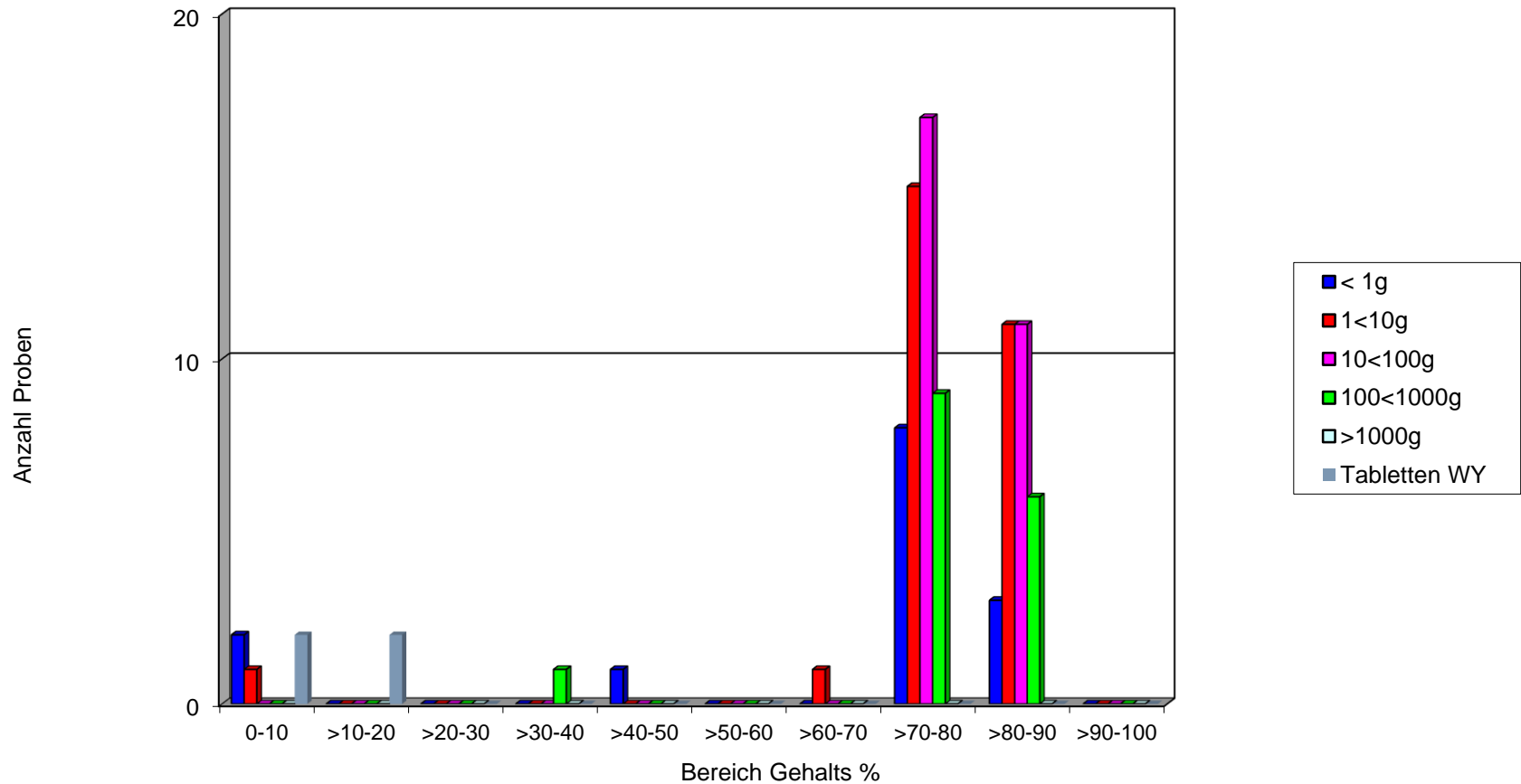
Thaipillen, Methamphetamin Base, Gehaltswerte 2023

<i>Thaipillen (WY)</i>	<i>Gehalt Base %</i>	<i>Dosis pro Tablette (mg)</i>
<i>Gesamtgewicht (g) Total: 589.1</i>		
<i>Anzahl Untersuchungen Total: 8</i>		
<i>Median (%)</i>	<i>5.3</i>	<i>5.0</i>
<i>Oberes Quartil (75 %)</i>	<i>6.8</i>	<i>7.7</i>
<i>Unteres Quartil (25 %)</i>	<i>3.5</i>	<i>3.7</i>
<i>Minimum</i>	<i>1.7</i>	<i>2.3</i>
<i>Maximum</i>	<i>8.3</i>	<i>10.5</i>

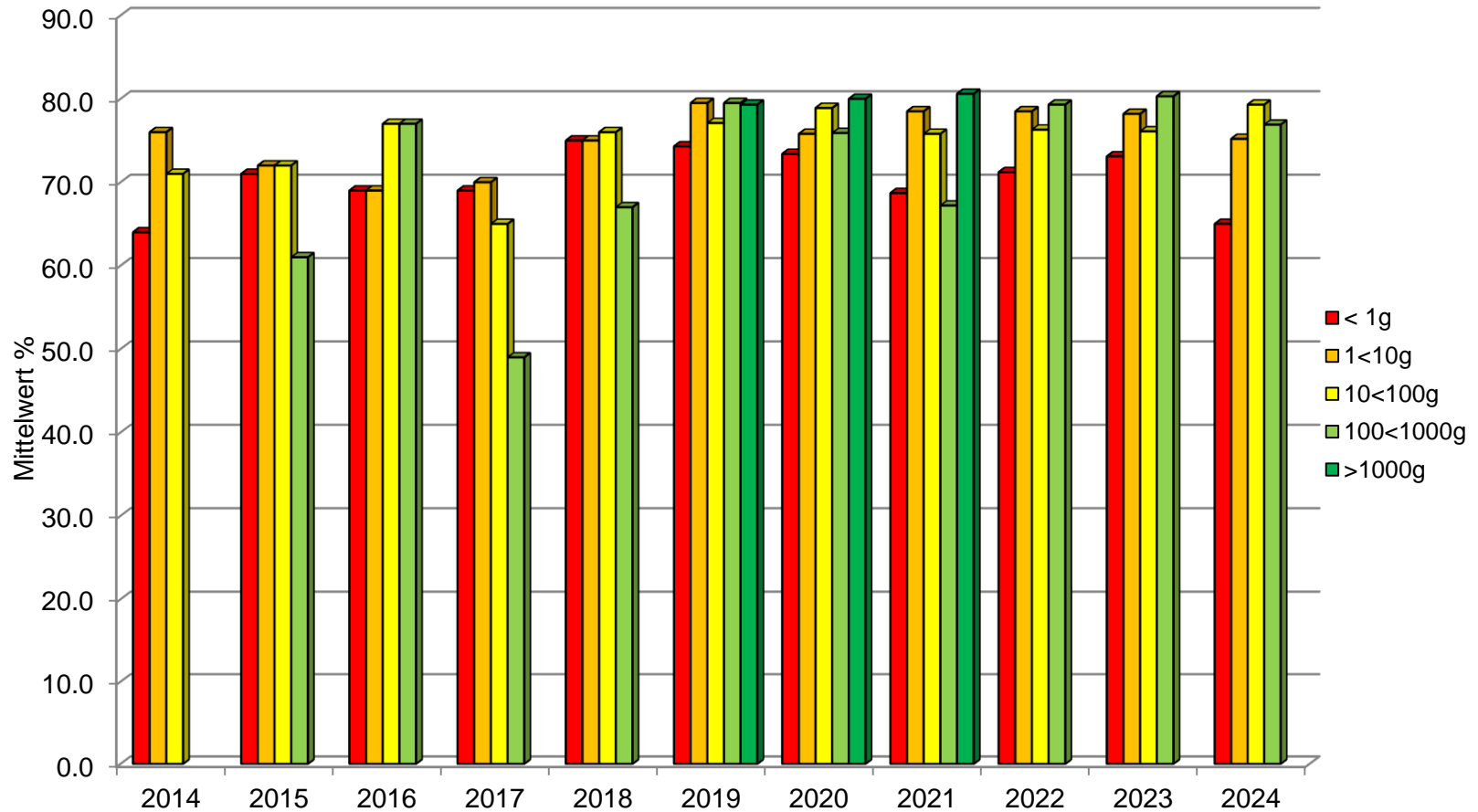
Methamphetamin Base, Gehaltswerte 2024



Methamphetamin Base, Detailübersicht 2024



Methamphetamin Base, Gehalte 2014 – 2024



MDMA Base (Pulver, Paste) 2024

Einzelkonfiskat- grösse (Gramm)	Anzahl Untersuchungen	Mittelwert Base (%)	Standard- abweichung (%CV)
< 1	20	60.0	± 25.4
1 < 10	17	51.2	± 29.8
10 < 100	26	71.8	± 16.4
100 < 1000	8	66.9	± 21.6
≥ 1000	5	45.0	± 32.6

MDMA Base (Pulver, Paste) 2023

<i>Einzelkonfiskat- Grösse (Gramm)</i>	<i>Anzahl Untersuchungen</i>	<i>Mittelwert Base (%)</i>	<i>Standard- abweichung (%CV)</i>
< 1	11	69.2	± 27.2
1 < 10	22	72.2	± 18.8
10 < 100	6	68.9	± 19.1
100 < 1000	4	66.4	± 27.1
≥ 1000	4	77.7	± 2.0

MDMA Base (Pulver und Paste), Gehaltswerte 2024

Mengenbereich (g)	< 1	1 < 10	10 < 100	100 < 1000	≥ 1000
Gesamtgewicht (g) Total: 16.5449	11.0	81.3	1'025.9	3'804.8	11'622.0
Anzahl Untersuchungen Total: 76	20	17	26	8	5
Median (%)	76.7	59.1	77.9	77.3	27.4
Oberes Quartil (75 %)	80.0	79.5	78.9	78.6	75.5
Unteres Quartil (25 %)	33.5	26.8	75.3	66.5	27.3
Minimum	16.5	7.5	25.6	28.1	10.5
Maximum	82.5	83.8	84.0	82.1	84.0

MDMA Base (Pulver und Paste), Gehaltswerte 2023

Mengenbereich (g)	< 1	1 < 10	10 < 100	100 < 1000	≥ 1000
Gesamtgewicht (g) Total: 803.5	6.6	372.6	461.1	765.7	6480.7
Anzahl Untersuchungen Total: 39	11	22	6	4	4
Median (%)	79.7	79.1	77.3	77.8	77.4
Oberes Quartil (75 %)	82.4	81.7	78.1	81.3	78.5
Unteres Quartil (25 %)	77.7	75.5	73.0	62.9	76.6
Minimum	6.3	12.8	30.2	26.1	75.6
Maximum	84.0	84.0	78.4	83.8	80.3

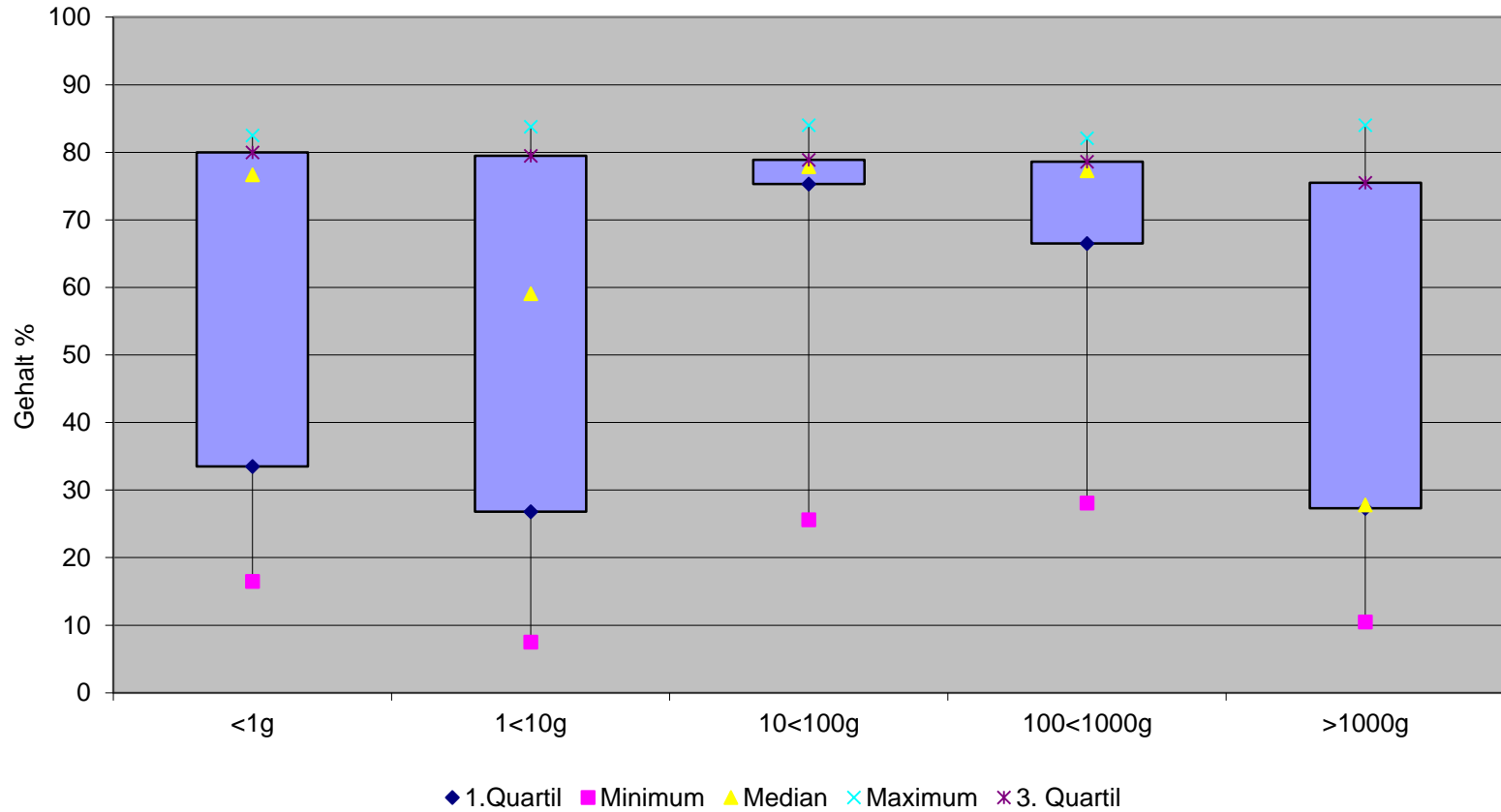
Ecstasy Tabletten, MDMA Base, Gehaltswerte 2024

XTC Tabletten	Gehalt Base %	Dosis pro Tablette (mg)
Gesamtgewicht (g) Total: 14'295.6		
Anzahl Untersuchungen Total: 90		
Median (%)	33.1	138.6
Oberes Quartil (75 %)	39.4	157.1
Unteres Quartil (25 %)	27.8	115.5
Minimum	8.4	2.1
Maximum	58.1	248.7

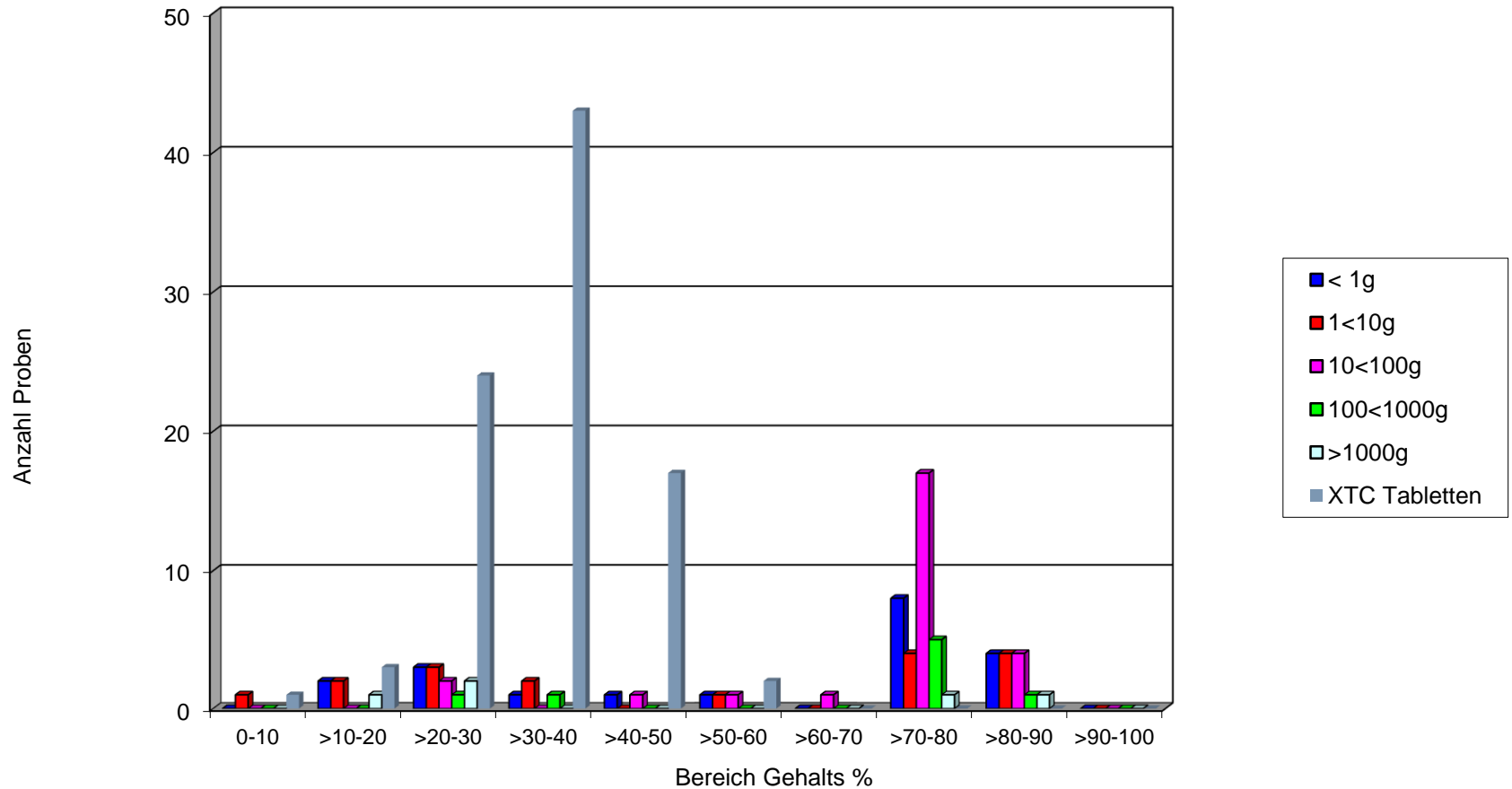
Ecstasy Tabletten, MDMA Base, Gehaltswerte 2023

XTC Tablette	Gehalt Base %	Dosis pro Tablette (mg)
<i>Gesamtgewicht (g)</i> <i>Total: 13'448.4</i>		
<i>Anzahl Untersuchungen</i> <i>Total: 50</i>		
<i>Median (%)</i>	25.2	118.5
<i>Oberes Quartil (75 %)</i>	34.7	143.2
<i>Unteres Quartil (25 %)</i>	15.9	88.5
<i>Minimum</i>	5.6	17.9
<i>Maximum</i>	49.5	183.0

MDMA Base, Gehaltswerte 2024



MDMA Base, Detailübersicht 2024



MDMA Base, Gehalte 2014 – 2024

