



Schweizerische
Gesellschaft
für Rechtsmedizin
SGRM

Société Suisse
de Médecine Légale
SSML

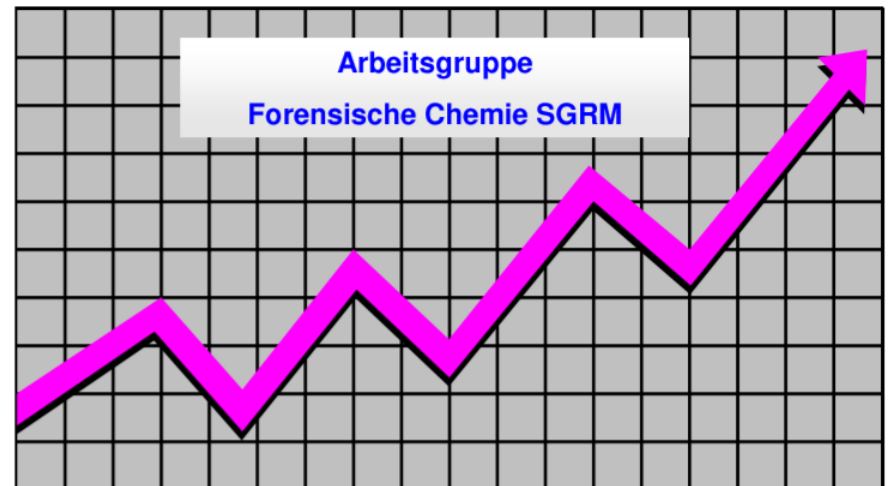
Società Svizzera
di Medicina Legale
SSML

SGRM Gruppe Forensische Chemie

Statistik 2025 Amphetamin, Metamphetamin, MDMA

<https://www.sgrm.ch/de/forensische-chemie-und-toxikologie/fachgruppe-forensische-chemie/statistiken-amphetamine/>

Auswertung:
IRM Bern
contact@irm.unibe.ch
031 684 0100



Anzahl Untersuchungen nach Laboratorien 2025

Labor	Amphetamin	Methamphetamin	MDMA	Total
BE	20	9	13	42
BS	12	18	44	74
CURML	3	-	-	3
ESC	3	4	39	46
SG	49	16	39	104
ZH	15	34	6	55
Total	92	81	141	314

Anzahl Untersuchungen nach Laboratorien 2024

<i>Labor</i>	<i>Amphetamin</i>	<i>Methamphetamin</i>	<i>MDMA</i>	<i>Total</i>
<i>BE</i>	7	22	52	81
<i>BS</i>	24	8	21	53
<i>CURML</i>	1	2	3	6
<i>ESC</i>	4	6	50	60
<i>SG</i>	62	6	32	100
<i>ZH</i>	13	46	4	63
<i>Total</i>	111	90	162	363

Amphetamin Base (Pulver, Paste) 2025

Einzelkonfiskat- grösse (Gramm)	Anzahl Untersuchungen	Mittelwert Base (%)	Standard- abweichung (%CV)
< 1	8	41.8	± 30.1
1 < 10	26	29.7	± 27.2
10 < 100	41	28.1	± 25.9
100 < 1000	14	28.8	± 28.6
≥ 1000	2	7.2	± 3.1

Amphetamin Base (Pulver und Paste) 2024

<i>Einzelkonfiskat- Grösse (Gramm)</i>	<i>Anzahl Untersuchungen</i>	<i>Mittelwert Base (%)</i>	<i>Standard- abweichung (%CV)</i>
<i>< 1</i>	<i>10</i>	<i>42.6</i>	<i>± 29.8</i>
<i>1 < 10</i>	<i>42</i>	<i>21.4</i>	<i>± 17.8</i>
<i>10 < 100</i>	<i>35</i>	<i>26.6</i>	<i>± 23.5</i>
<i>100 < 1000</i>	<i>18</i>	<i>19.4</i>	<i>± 10.7</i>
<i>≥ 1000</i>	<i>6</i>	<i>22.2</i>	<i>± 2.4</i>

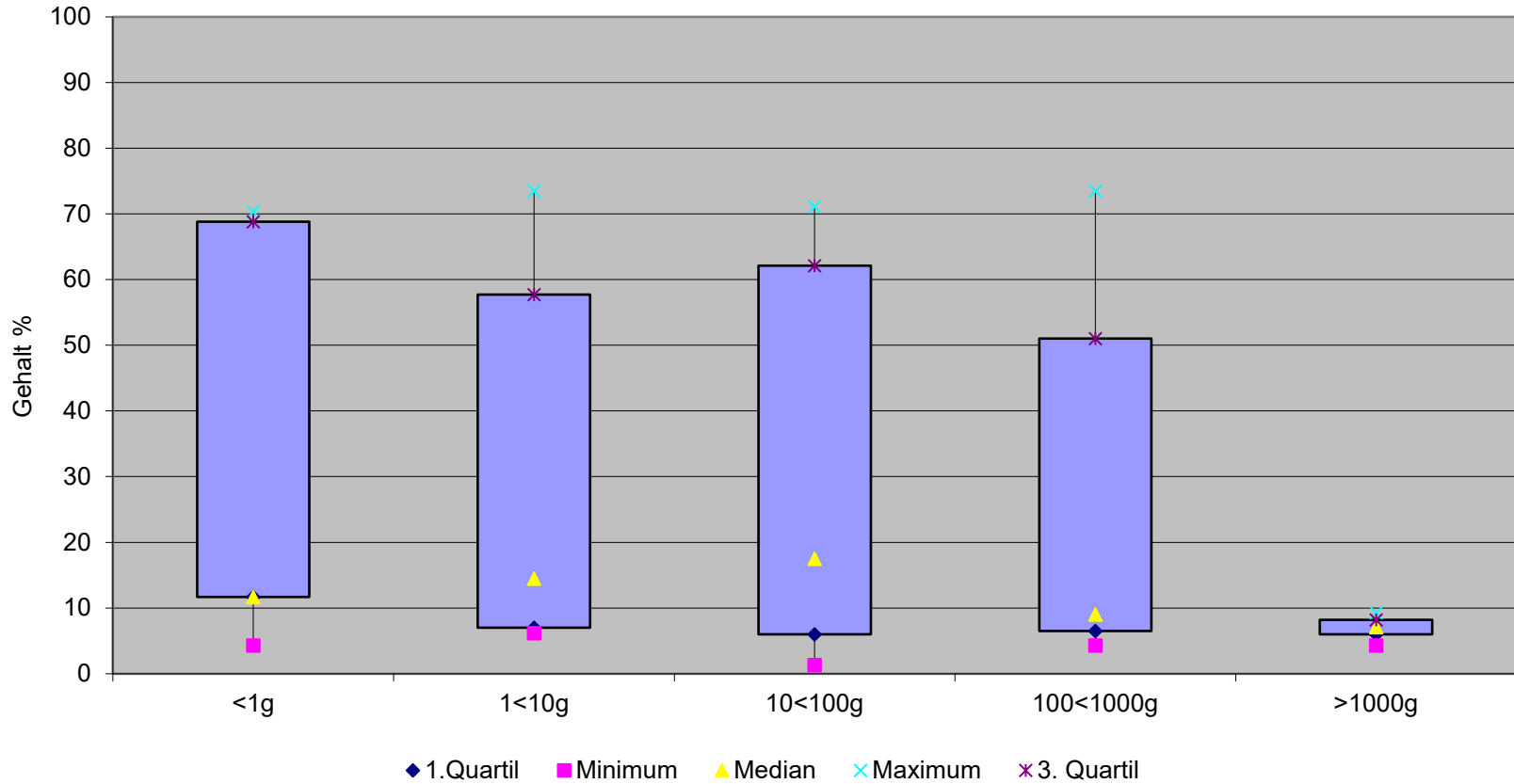
Amphetamin Base (Pulver, Paste) Gehaltswerte 2025

Mengenbereich (g)	< 1	1 < 10	10 < 100	100 < 1000	≥ 1000
Gesamtgewicht (g) Total: 15'933.1	4.2	136.2	1'632.2	7'219.7	6'940.0
Anzahl Untersuchungen Total: 92	8	26	41	14	2
Median (%)	11.7	14.5	17.5	9.0	7.1
Oberes Quartil (75 %)	68.8	57.7	62.1	51.0	8.2
Unteres Quartil (25 %)	11.7	7.0	6.0	6.5	6.0
Minimum	4.3	6.2	1.3	4.3	4.9
Maximum	70.3	73.5	71.1	73.5	9.3

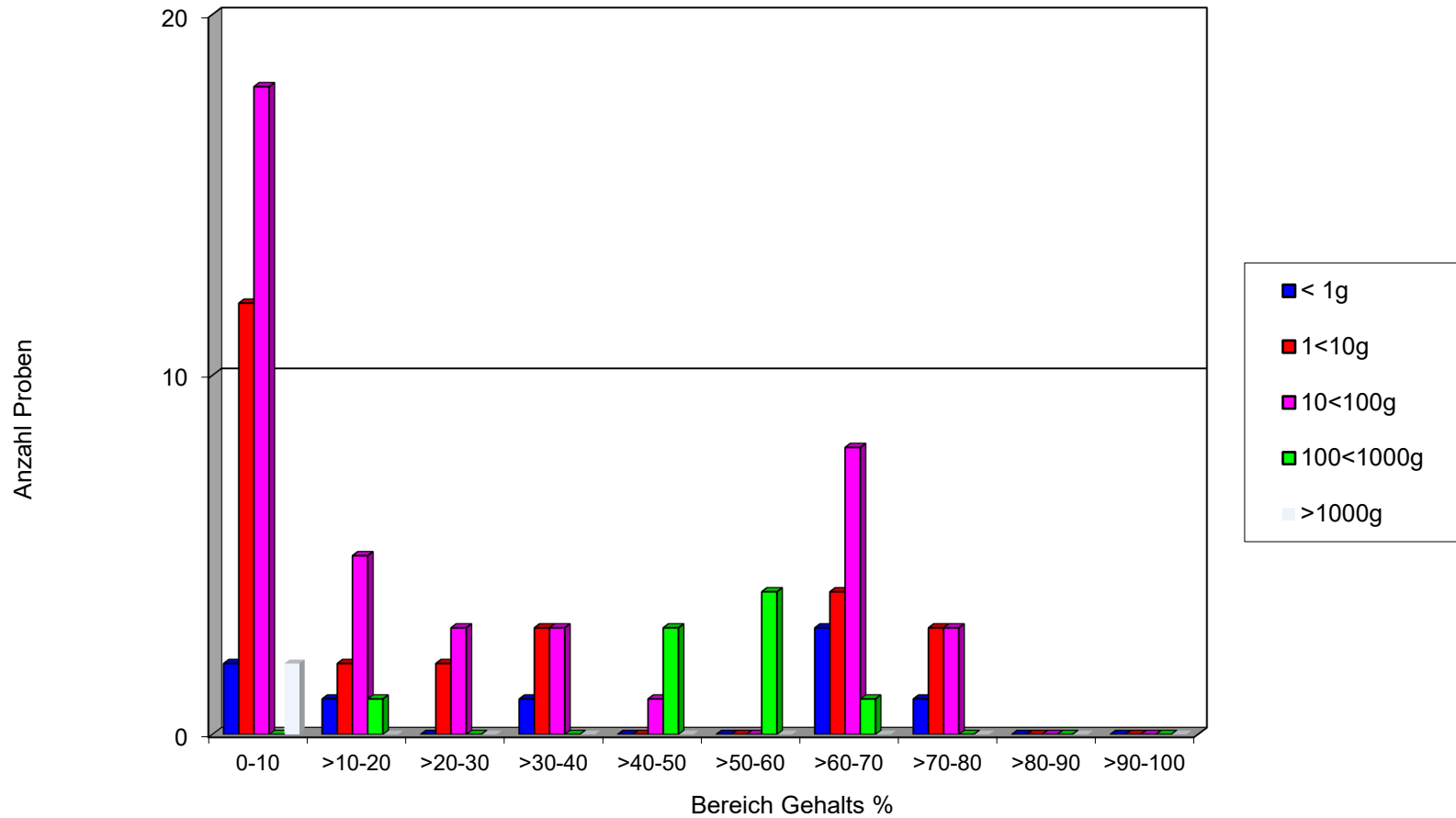
Amphetamin Base, (Pulver, Paste) Gehaltswerte 2024

Mengenbereich (g)	< 1	1 < 10	10 < 100	100 < 1000	≥ 1000
<i>Gesamtgewicht (g)</i> <i>Total: 18'705</i>	5.8	174.1	1'763.2	10'729.8	6'030
<i>Anzahl Untersuchungen</i> <i>Total: 111</i>	10	42	35	18	6
<i>Median (%)</i>	41.8	14.7	16.0	19.5	23.2
<i>Oberes Quartil (75 %)</i>	70.7	21.9	42.2	22.6	23.3
<i>Unteres Quartil (25 %)</i>	12.0	11.1	10.9	12.5	23.1
<i>Minimum</i>	6.6	1.2	1.9	6.6	17.3
<i>Maximum</i>	73.5	73.4	72.5	55.1	23.4

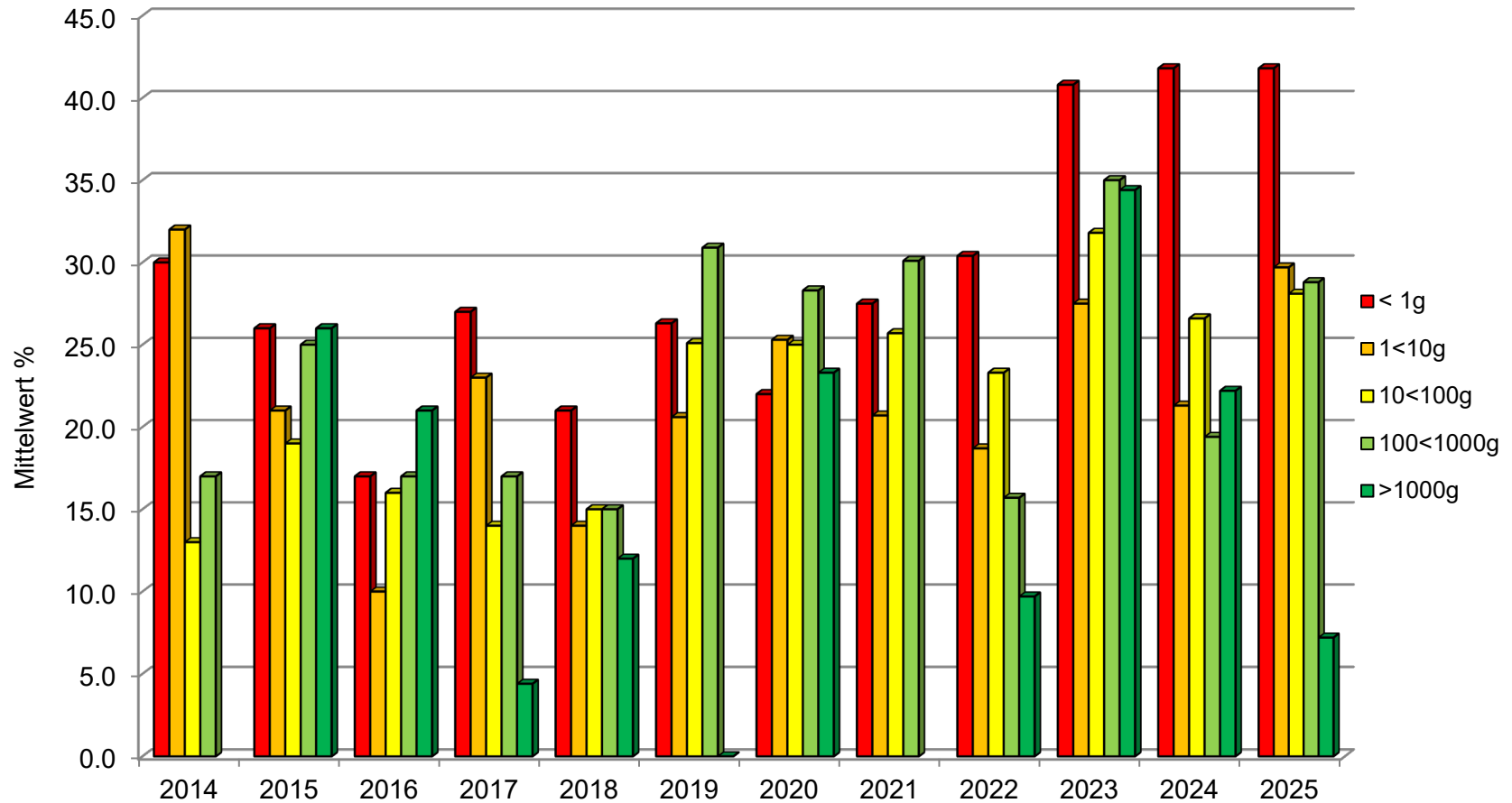
Amphetamin Base, Gehaltswerte 2025



Amphetamin Base, Detailübersicht 2025



Amphetamin Base, Gehalte 2014 – 2025



Methamphetamin Base (Pulver) 2025

Einzelkonfiskat- grösse (Gramm)	Anzahl Untersuchungen	Mittelwert Base (%)	Standard- abweichung (%CV)
< 1	19	77.9	± 9.0
1 < 10	23	74.1	± 18.0
10 < 100	34	79.3	± 1.9
100 < 1000	5	22.0	± 38.9
≥ 1000	-	-	-

Methamphetamin Base (Pulver) 2024

<i>Einzelkonfiskat- Grösse (Gramm)</i>	<i>Anzahl Untersuchungen</i>	<i>Mittelwert Base (%)</i>	<i>Standard- abweichung (%CV)</i>
< 1	14	65.0	± 27.5
1 < 10	28	75.2	± 14.4
10 < 100	28	79.3	± 1.7
100 < 1000	16	76.9	± 10.4
≥ 1000	-	-	-

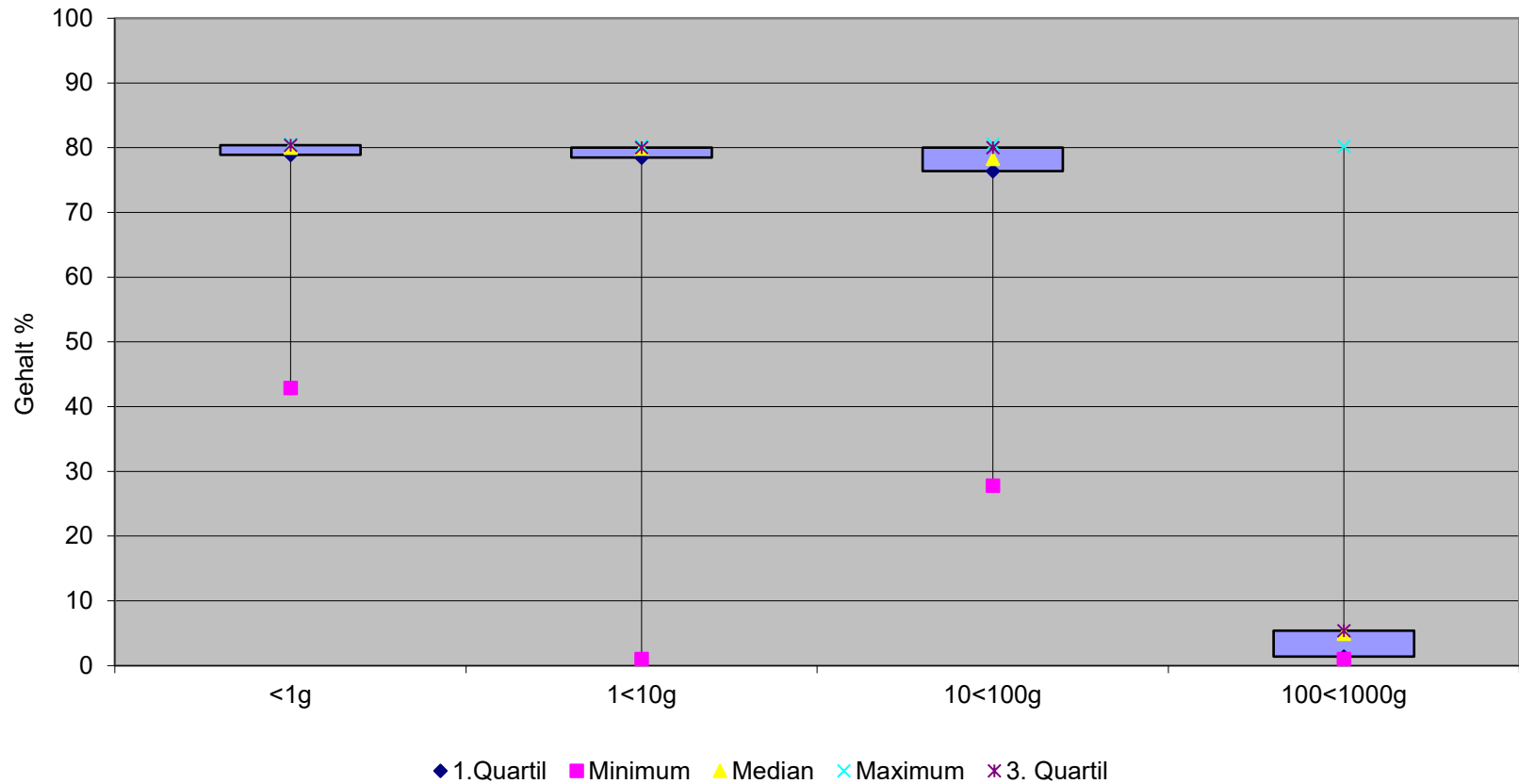
Methamphetamin Base (Pulver) Gehaltswerte 2025

Mengenbereich (g)	< 1	1 < 10	10 < 100	100 < 1000	≥ 1000
Gesamtgewicht (g) Total: 3'533.8	22.2	197.3	1548.8	1743.6	-
Anzahl Untersuchungen Total: 81	19	23	34	5	-
Median (%)	80.0	79.9	78.3	4.9	-
Oberes Quartil (75 %)	80.4	80.0	80.0	5.4	-
Unteres Quartil (25 %)	78.9	78.5	76.4	1.4	-
Minimum	42.9	1.0	27.8	1.0	-
Maximum	80.6	80.3	80.6	80.2	-

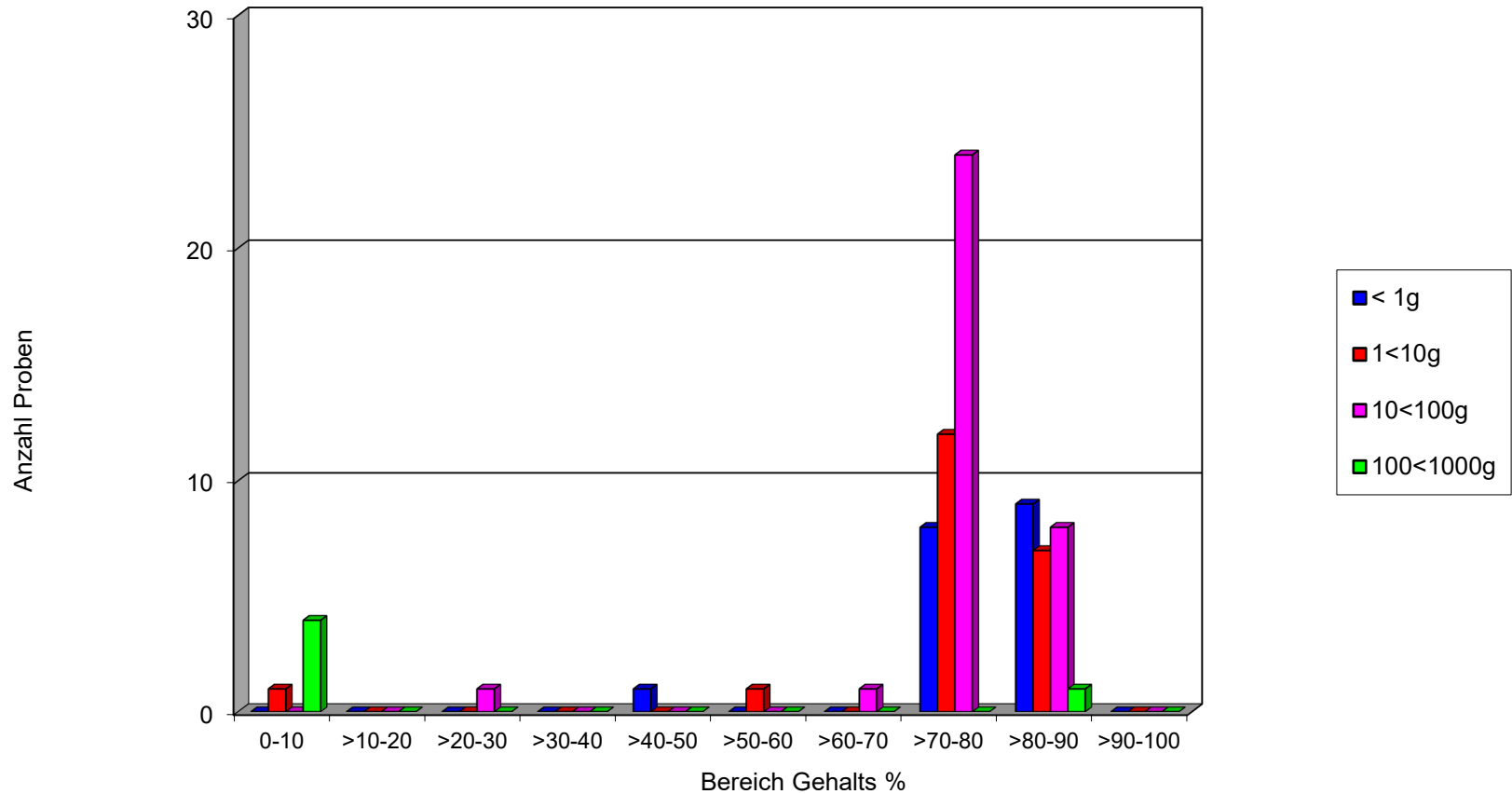
Methamphetamin Base (Pulver) Gehaltswerte 2024

Mengenbereich (g)	< 1	1 < 10	10 < 100	100 < 1000	≥ 1000
<i>Gesamtgewicht (g)</i> <i>Total: 9'041.9</i>	77.4	219.8	1330.8	7414.0	-
<i>Anzahl Untersuchungen</i> <i>Total: 86</i>	14	28	28	16	-
<i>Median (%)</i>	78.1	79.8	79.9	79.9	-
<i>Oberes Quartil (75 %)</i>	79.8	80.1	80.3	80.1	-
<i>Unteres Quartil (25 %)</i>	74.0	75.6	79.4	79.4	-
<i>Minimum</i>	0.2	4.7	72.9	38.6	-
<i>Maximum</i>	80.1	80.6	80.6	80.6	-

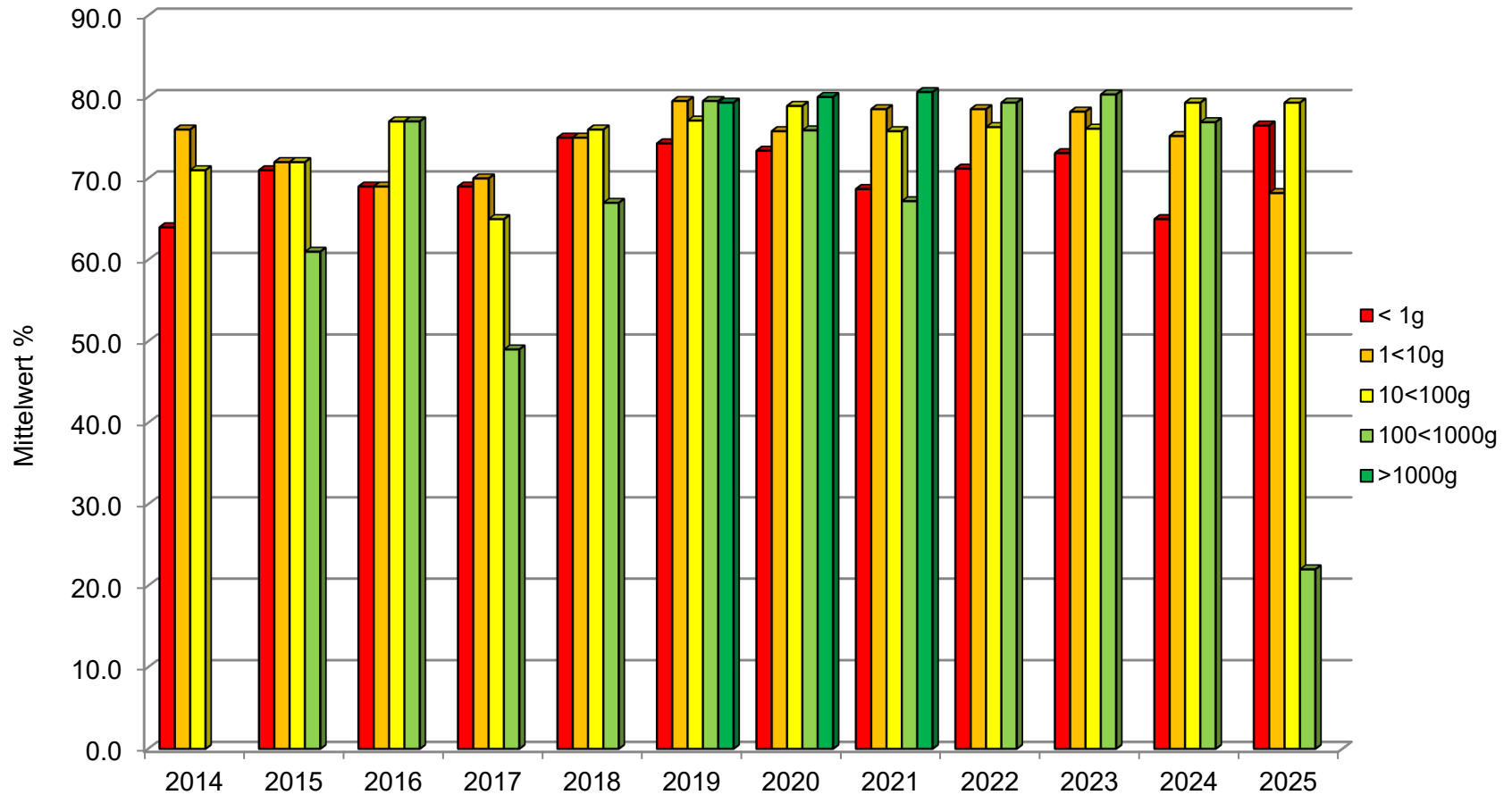
Methamphetamin Base, Gehaltswerte 2025



Methamphetamin Base, Detailübersicht 2025



Methamphetamin Base, Gehalte 2014 – 2025



MDMA Base (Pulver, Paste) 2025

Einzelkonfiskat- grösse (Gramm)	Anzahl Untersuchungen	Mittelwert Base (%)	Standard- abweichung (%CV)
< 1	13	56.9	± 26.8
1 < 10	24	63.0	± 24.9
10 < 100	29	51.1	± 22.7
100 < 1000	8	54.8	± 25.3
≥ 1000	1	23.2	-

MDMA Base (Pulver, Paste) 2024

<i>Einzelkonfiskat- Grösse (Gramm)</i>	<i>Anzahl Untersuchungen</i>	<i>Mittelwert Base (%)</i>	<i>Standard- abweichung (%CV)</i>
< 1	20	60.0	± 25.4
1 < 10	17	51.2	± 29.8
10 < 100	26	71.8	± 16.4
100 < 1000	8	66.9	± 21.6
≥ 1000	5	45.0	± 32.6

MDMA Base (Pulver und Paste), Gehaltswerte 2025

Mengenbereich (g)	< 1	1 < 10	10 < 100	100 < 1000	≥ 1000
Gesamtgewicht (g) Total: 8'270.5	8.8	95.3	1'284.7	4'588.7	9'622.0
Anzahl Untersuchungen Total: 75	13	24	29	8	1
Median (%)	75.2	77.7	44.1	35.6	23.2
Oberes Quartil (75 %)	79.0	82.8	74.9	79.4	-
Unteres Quartil (25 %)	35.3	31.7	36.1	34.0	-
Minimum	9.5	24.6	10.0	25.8	-
Maximum	84.0	84.0	83.8	83.8	-

MDMA Base (Pulver und Paste), Gehaltswerte 2024

Mengenbereich (g)	< 1	1 < 10	10 < 100	100 < 1000	≥ 1000
<i>Gesamtgewicht (g)</i> <i>Total: 16'5449</i>	11.0	81.3	1'025.9	3'804.8	11'622.0
<i>Anzahl Untersuchungen</i> <i>Total: 76</i>	20	17	26	8	5
<i>Median (%)</i>	76.7	59.1	77.9	77.3	27.4
<i>Oberes Quartil (75 %)</i>	80.0	79.5	78.9	78.6	75.5
<i>Unteres Quartil (25 %)</i>	33.5	26.8	75.3	66.5	27.3
<i>Minimum</i>	16.5	7.5	25.6	28.1	10.5
<i>Maximum</i>	82.5	83.8	84.0	82.1	84.0

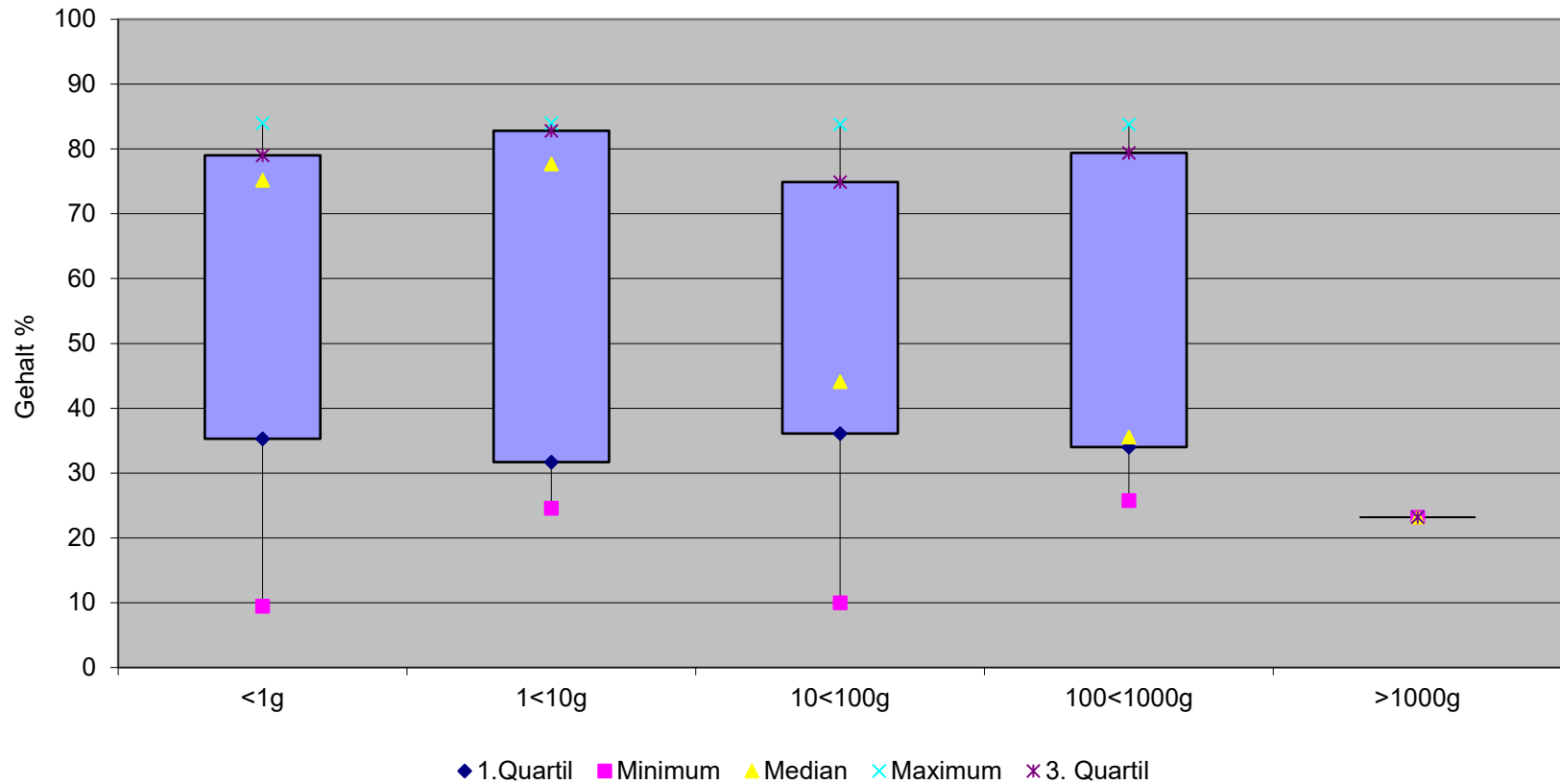
Ecstasy Tabletten, MDMA Base, Gehaltswerte 2025

XTC Tabletten	Gehalt Base %	Dosis pro Tablette (mg)
Gesamtgewicht (g) Total: 9'149.0		
Anzahl Untersuchungen Total: 66		
Median (%)	31.1	123.7
Oberes Quartil (75 %)	35.3	139.5
Unteres Quartil (25 %)	28.0	58.1
Minimum	11.7	9.3
Maximum	55.3	195.3

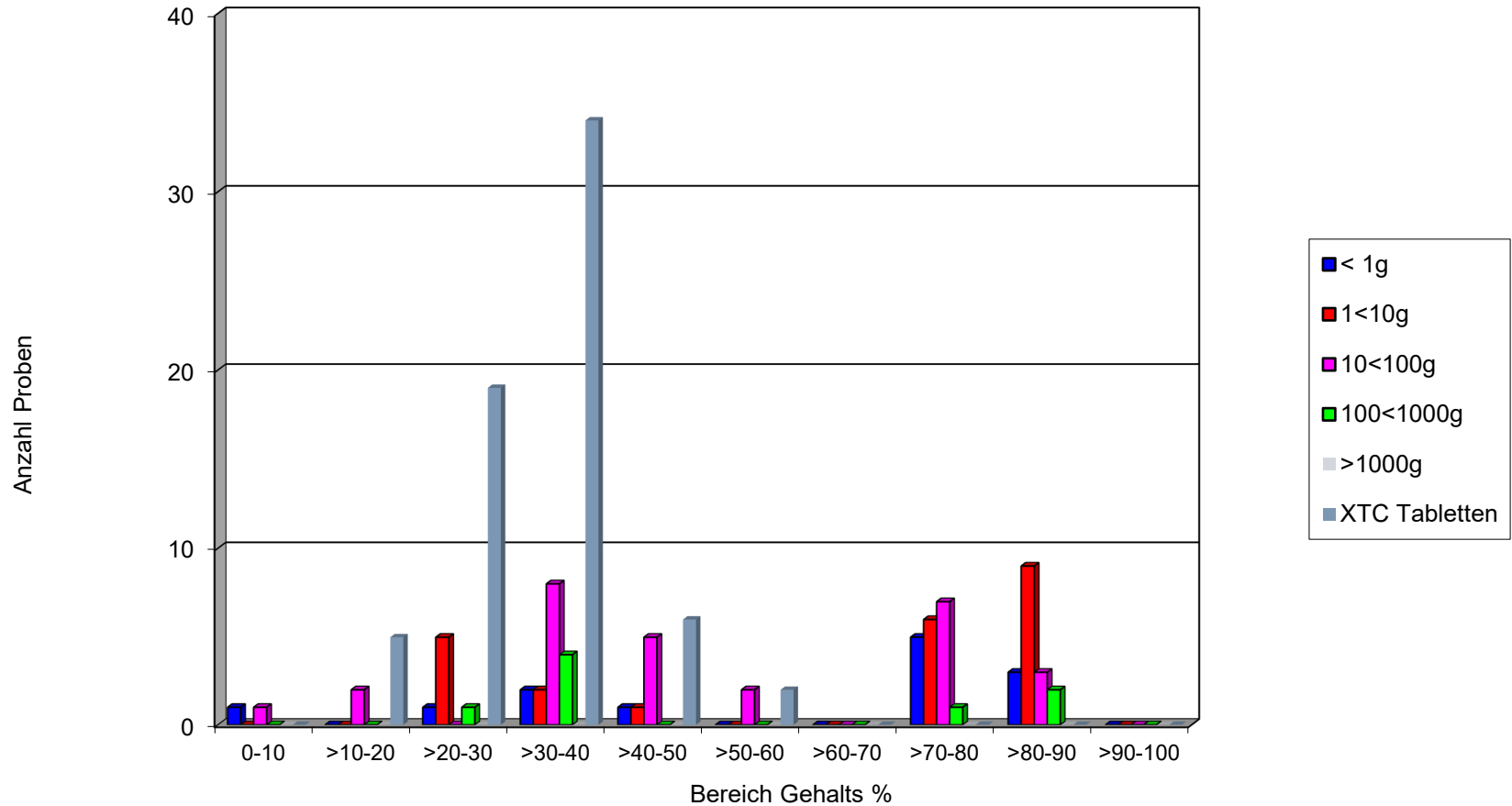
Ecstasy Tabletten, MDMA Base, Gehaltswerte 2024

<i>XTC Tablette</i>	<i>Gehalt Base %</i>	<i>Dosis pro Tablette (mg)</i>
<i>Gesamtgewicht (g)</i> <i>Total: 14'295.6</i>		
<i>Anzahl Untersuchungen</i> <i>Total: 90</i>		
<i>Median (%)</i>	<i>33.1</i>	<i>138.6</i>
<i>Oberes Quartil (75 %)</i>	<i>39.4</i>	<i>157.1</i>
<i>Unteres Quartil (25 %)</i>	<i>27.8</i>	<i>115.5</i>
<i>Minimum</i>	<i>8.4</i>	<i>2.1</i>
<i>Maximum</i>	<i>58.1</i>	<i>248.7</i>

MDMA Base, Gehaltswerte 2025



MDMA Base, Detailübersicht 2025



MDMA Base, Gehalte 2014 – 2025

