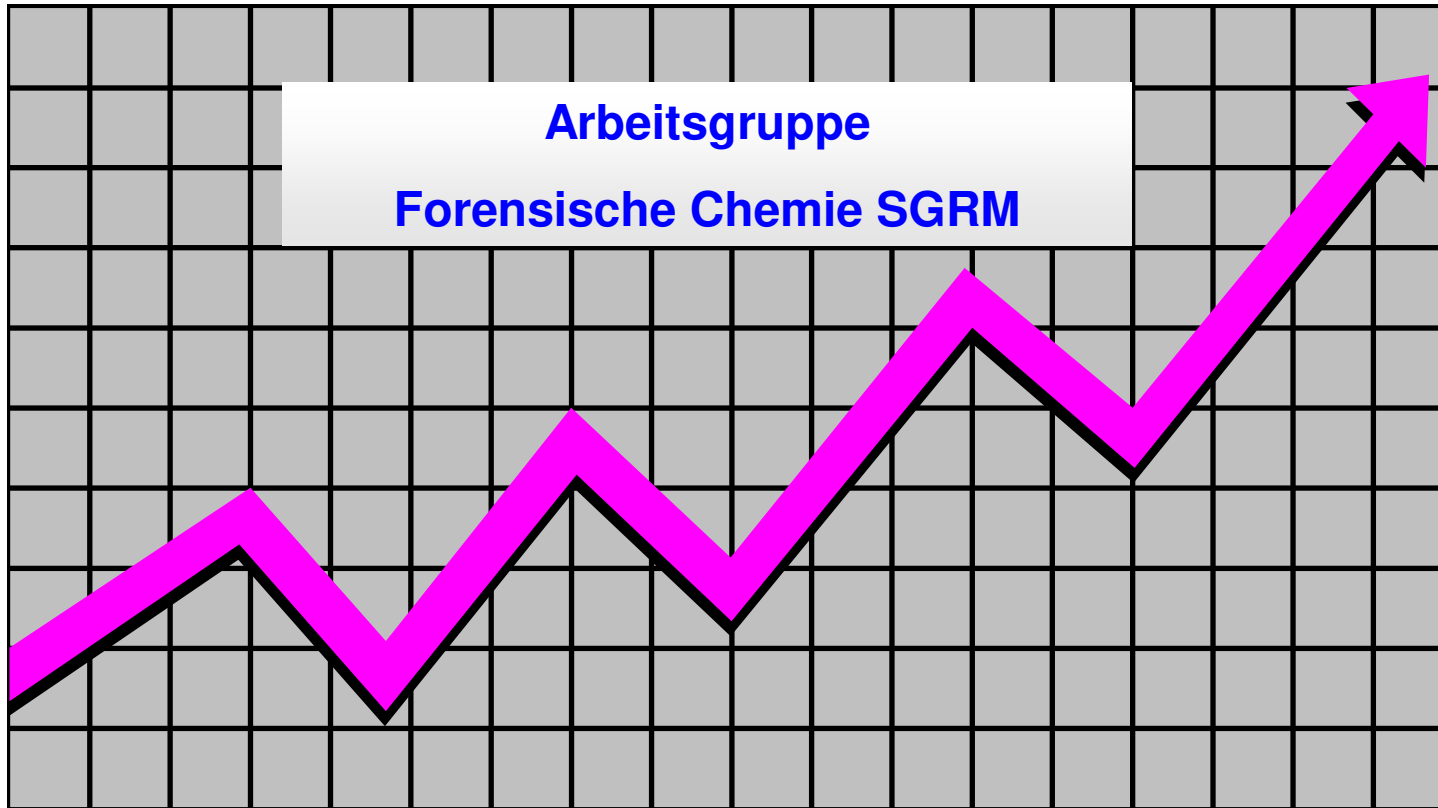


Betäubungsmittelstatistik 2018

Cocain & Heroin Gehaltswerte



Auswertung: M.T. Pinorini-Godly, *Fondazione Alpina per le Scienze della Vita, Istituto alpino di chimica e di tossicologia*,
CH-6718 Olivone; e-mail: maria.teresa.pinorini@fasv.ch

Anzahl Untersuchungen / Labor 2018

| Labor | Kokain | Heroin |
|--------------|-----------------------|---------------------|
| ZH | 389 (364) | 186 (267) |
| SG | 264 (117) | 144 (256) |
| BE | 251 (310) | 273 (255) |
| BS | 79 (171) | 37 (55) |
| LU | 44 (34) | 56 (27) |
| ESC/IACT | 291 (255) | 81 (94) |
| CURML | 27 (14) | 1 (2) |
| Total | 1345 (1265) | 778 (956) |



Cocain-Base 2018

Mittlere Betäubungsmittelgehalte

| Einzelkonfiskat- grösse | Anzahl Untersuchungen | Mittelwert (%) Base | Standard- abweichung (%) |
|----------------------------|--------------------------|------------------------|-----------------------------|
| < 1 | 336 (266) | 63 (61) | ± 20 (± 21) |
| 1 < 10 | 461 (417) | 58 (59) | ± 19 (± 21) |
| 10 < 100 | 425 (402) | 63 (63) | ± 20 (± 21) |
| 100 < 1000 | 95 (155) | 66 (65) | ± 20 (± 18) |
| > 1000 | 28 (25) | 79 (75) | ± 9.6 (± 14) |

(2017)



Cocain-HCl 2018

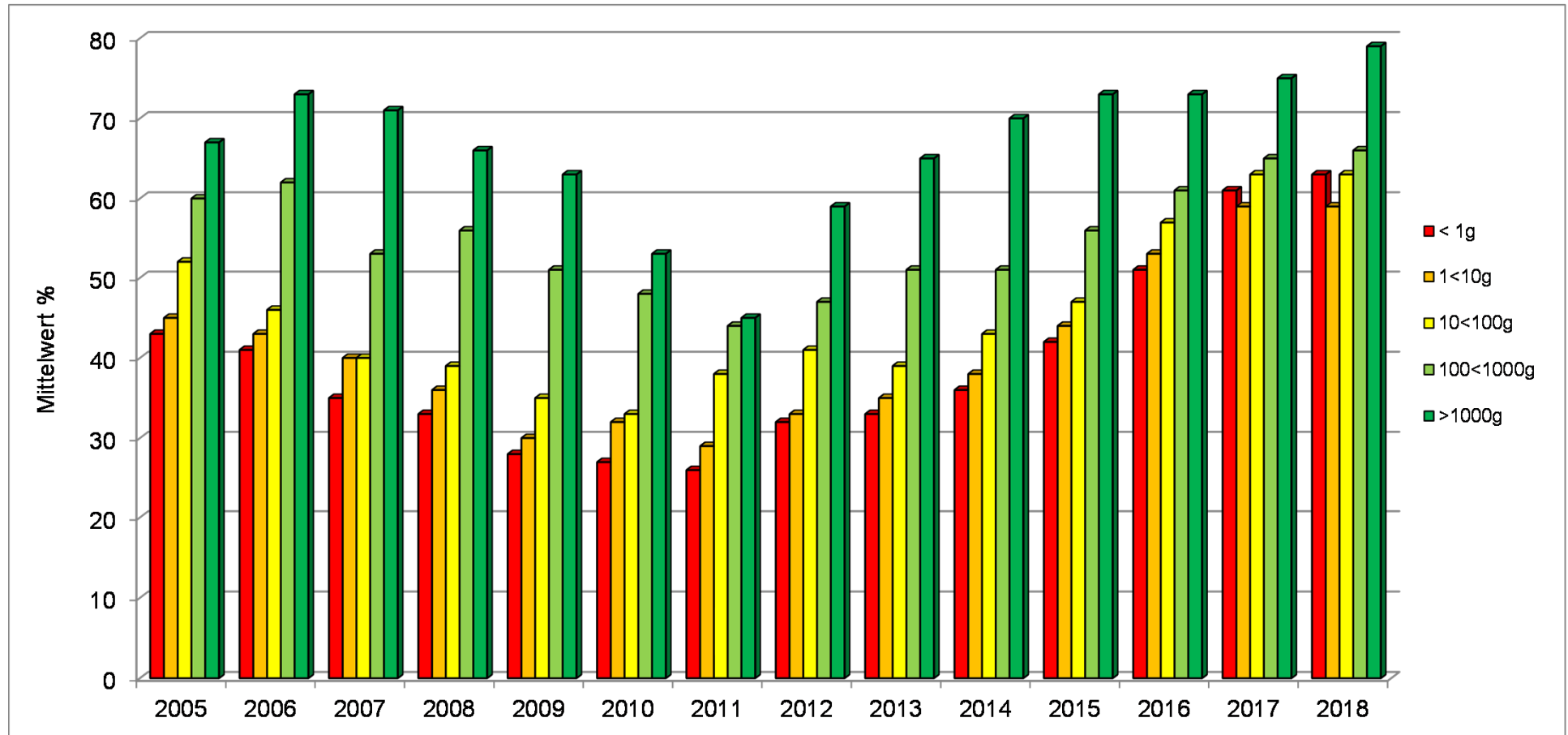
Mittlere Betäubungsmittelgehalte

| Einzelkonfiskat- grösse | Anzahl Untersuchungen | Mittelwert (%) HCl | Standard- abweichung (%) |
|----------------------------|--------------------------|-----------------------|-----------------------------|
| < 1 | 336 (266) | 70 (67) | ± 23 (± 24) |
| 1 < 10 | 461 (417) | 65 (65) | ± 22 (± 23) |
| 10 < 100 | 425 (402) | 70 (69) | ± 22 (± 24) |
| 100 < 1000 | 95 (155) | 74 (72) | ± 22 (± 20) |
| > 1000 | 28 (25) | 89 (83) | ± 11 (± 15) |

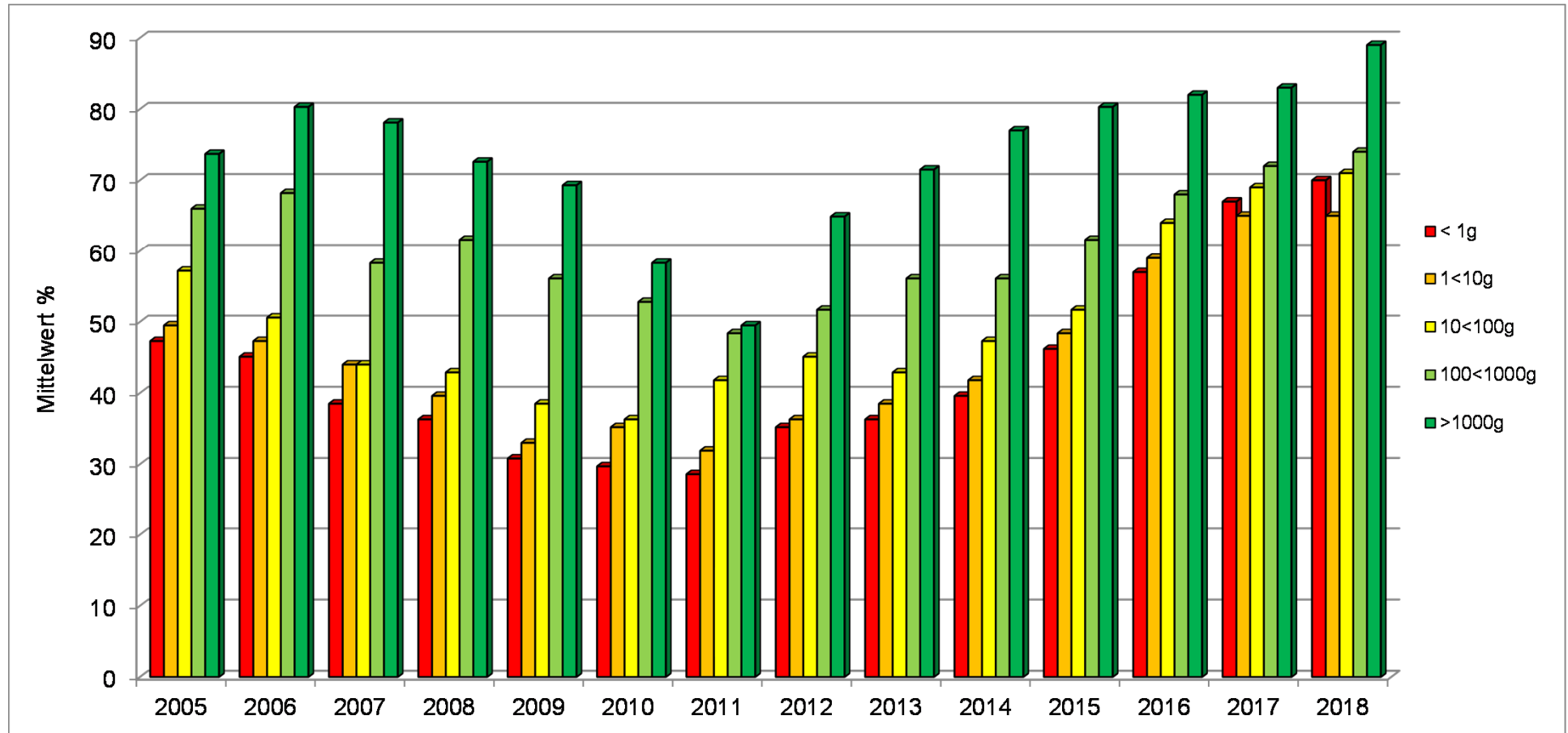
(2017)



Cocain-Base Gehalt 2005 – 2018



Cocain-HCl Gehalt 2005 – 2018



Cocain-Base Gehaltswerte 2018

| Mengenbereich Statistischer Wert | < 1 g | < 1 – 10 g | < 10 - 100 g | < 100 - 1000 g | > 1000 g |
|--|---------------------|-------------------------|-------------------------|-------------------------|-------------------------|
| Gesamtgewicht [g] Total: 198'772 (143'739) | 815 (611) | 26128 (11299) | 36211 (30418) | 47393 (63062) | 88225 (41349) |
| Anzahl Untersuchungen Total: 1345 (1265) | 336 (266) | 461 (417) | 425 (402) | 95 (155) | 28 (25) |
| Median [%] | 64 (65) | 60 (63) | 68 (70) | 70 (69) | 84 (80) |
| Oberes Quartil (75 %) | 81 (80) | 76 (79) | 80 (81) | 82 (80) | 86 (83) |
| Unteres Quartil (25 %) | 48 (45) | 43 (43) | 49 (48) | 57 (53) | 76 (71) |
| Minimum | 0.4 (2.0) | 5.4 (0.3) | 0.7 (1.0) | 9.7 (17) | 53 (44) |
| Maximum | 100 (94) | 93 (90) | 96 (91) | 89 (88) | 89 (90) |

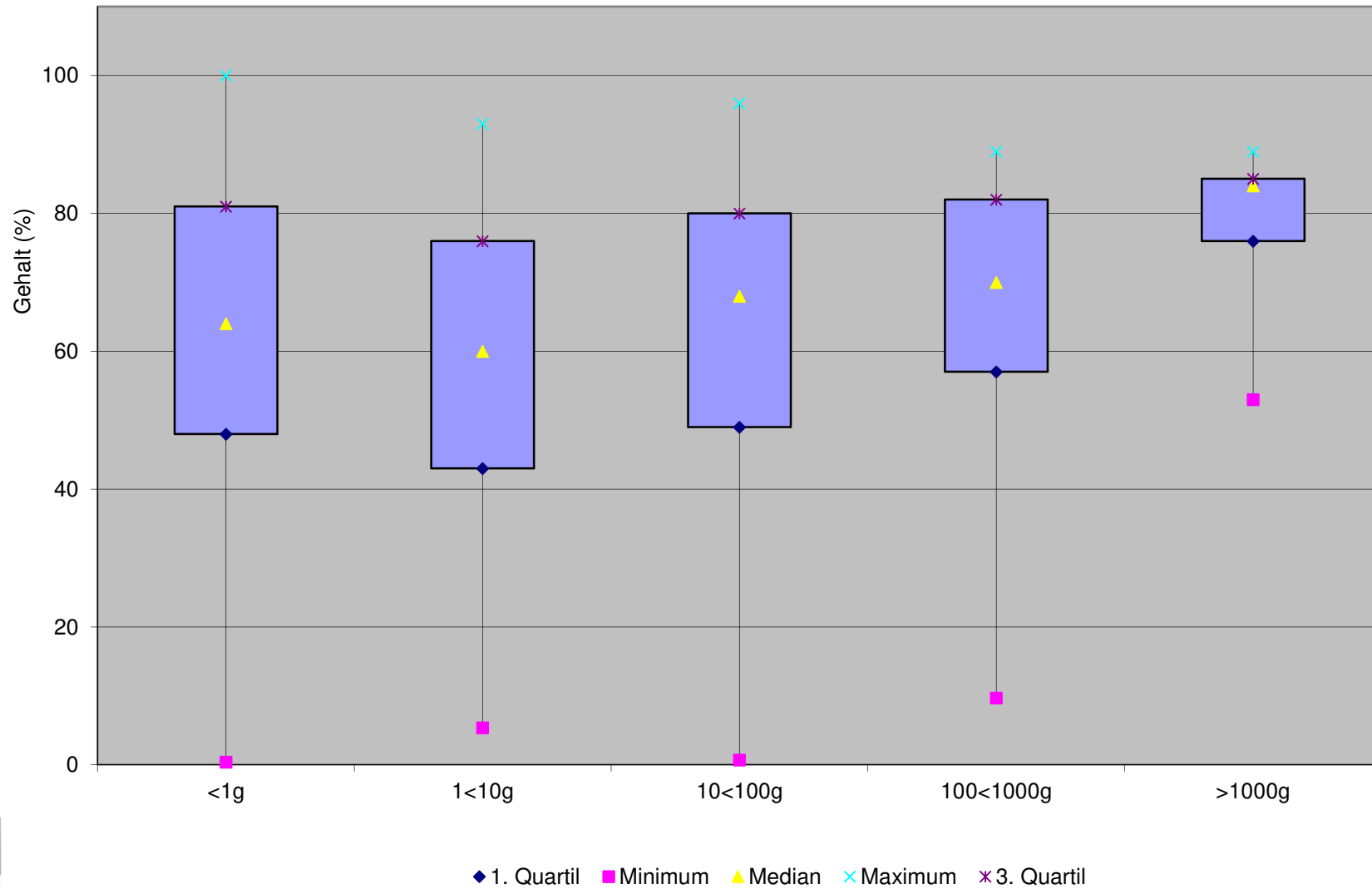


Cocain-HCl Gehaltswerte 2018

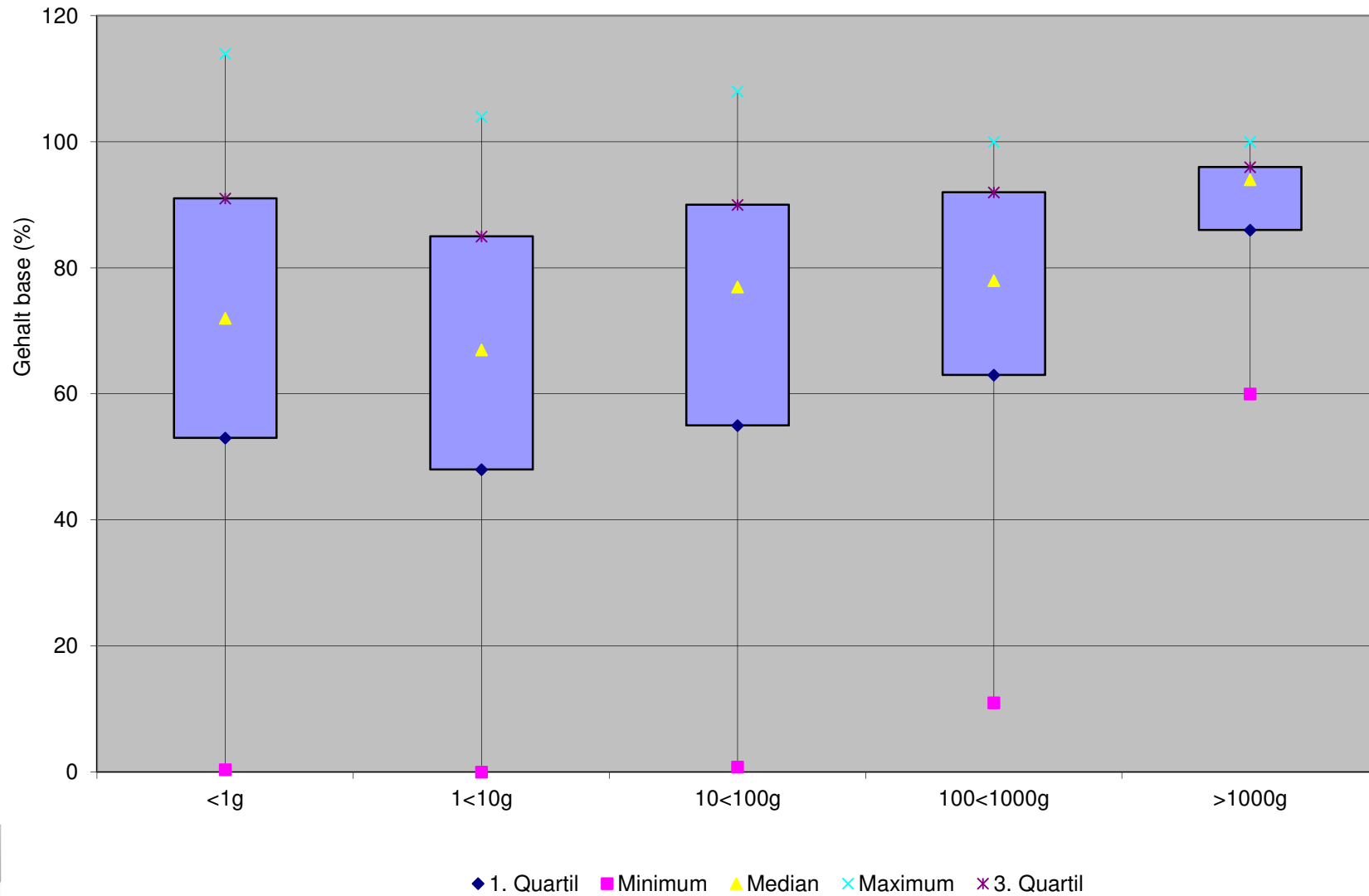
| Mengenbereich Statistischer Wert | < 1 g | < 1 – 10 g | < 10 - 100 g | < 100 - 1000 g | > 1000 g |
|--|---------------------|-------------------------|-------------------------|-------------------------|-------------------------|
| Gesamtgewicht [g] Total: 198'772 (143'739) | 815 (611) | 26128 (11299) | 36211 (30418) | 47393 (63062) | 88225 (41349) |
| Anzahl Untersuchungen Total: 1345 (1265) | 336 (266) | 461 (417) | 425 (402) | 95 (155) | 28 (25) |
| Median [%] | 72 (71) | 68 (69) | 77 (77) | 78 (76) | 94 (88) |
| Oberes Quartil (75 %) | 91 (89) | 85 (87) | 90 (89) | 92 (88) | 96 (93) |
| Unteres Quartil (25 %) | 53 (50) | 48 (47) | 55 (53) | 63 (58) | 86 (80) |
| Minimum | 0.4 (2.2) | 0.0 (0.4) | 0.8 (1.1) | 11 (19) | 60 (49) |
| Maximum | 114 (105) | 104 (101) | 108 (102) | 100 (100) | 100 (100) |



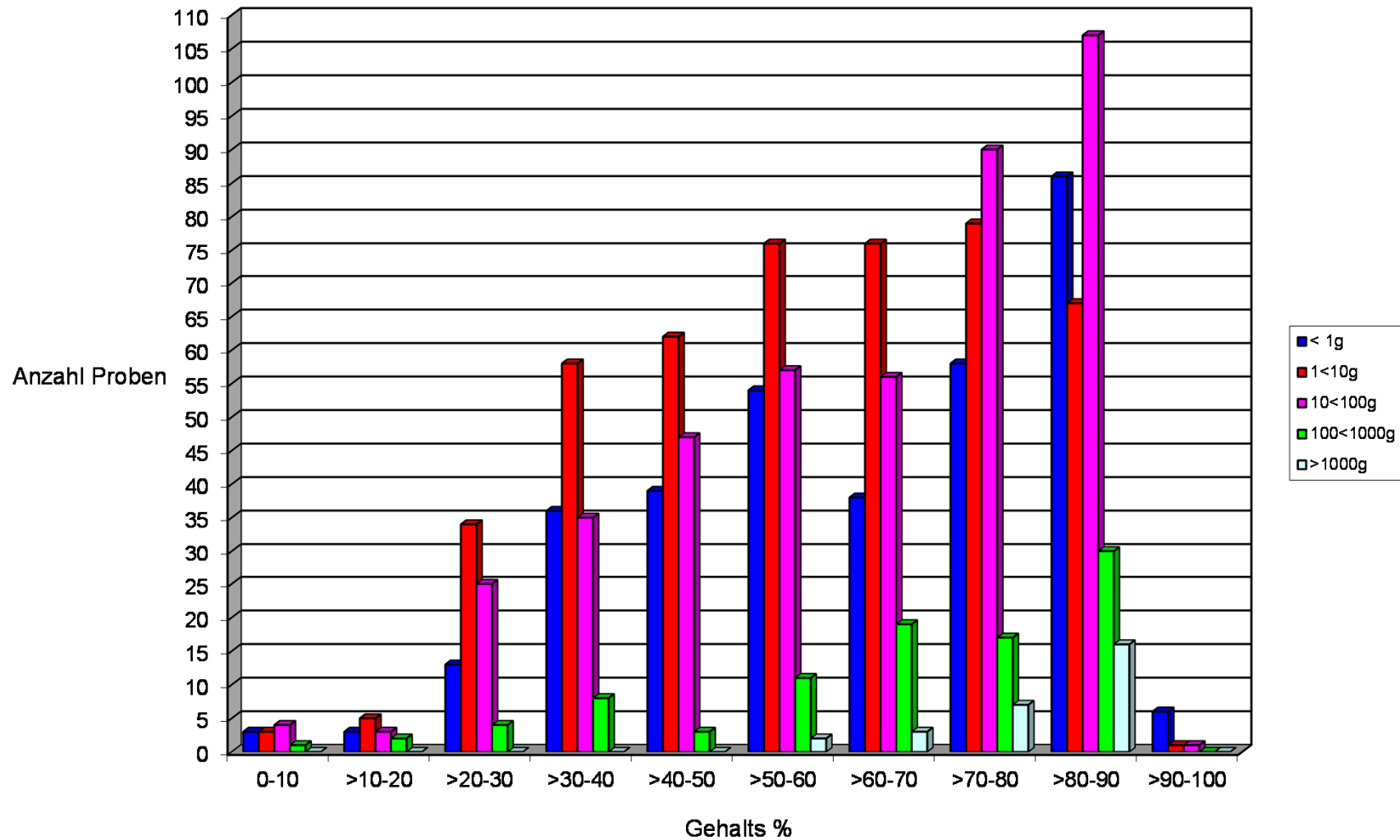
Cocain-Base Gehaltswerte 2018



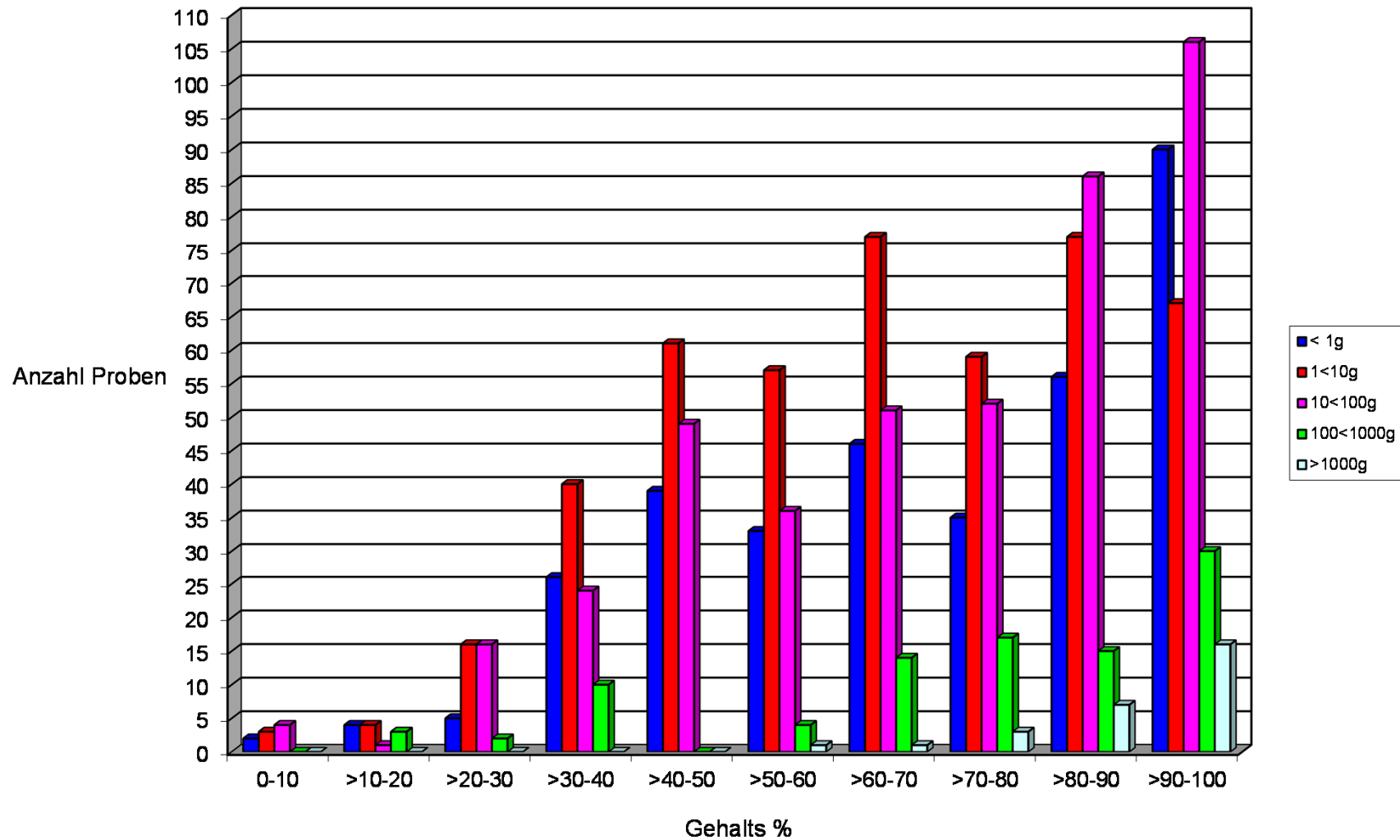
Cocain-HCl Gehaltswerte 2018



Cocain-Base Detailübersicht 2018



Cocain-HCl Detailübersicht 2018



Heroin-Base 2018

Mittlere Betäubungsmittelgehalte

| Einzelkonfiskat- grösse | Anzahl Untersuchungen | Mittelwert (%) Base | Standard- abweichung (%) |
|----------------------------|--------------------------|------------------------|-----------------------------|
| < 1 | 57 (101) | 19 (20) | ± 11 (± 12) |
| 1 < 10 | 322 (459) | 21 (17) | ± 11 (± 9.0) |
| 10 < 100 | 258 (275) | 24 (21) | ± 14 (± 13) |
| 100 < 1000 | 140 (121) | 35 (30) | ± 18 (± 16) |
| > 1000 | 1 (0) | 16 (-) | - (-) |



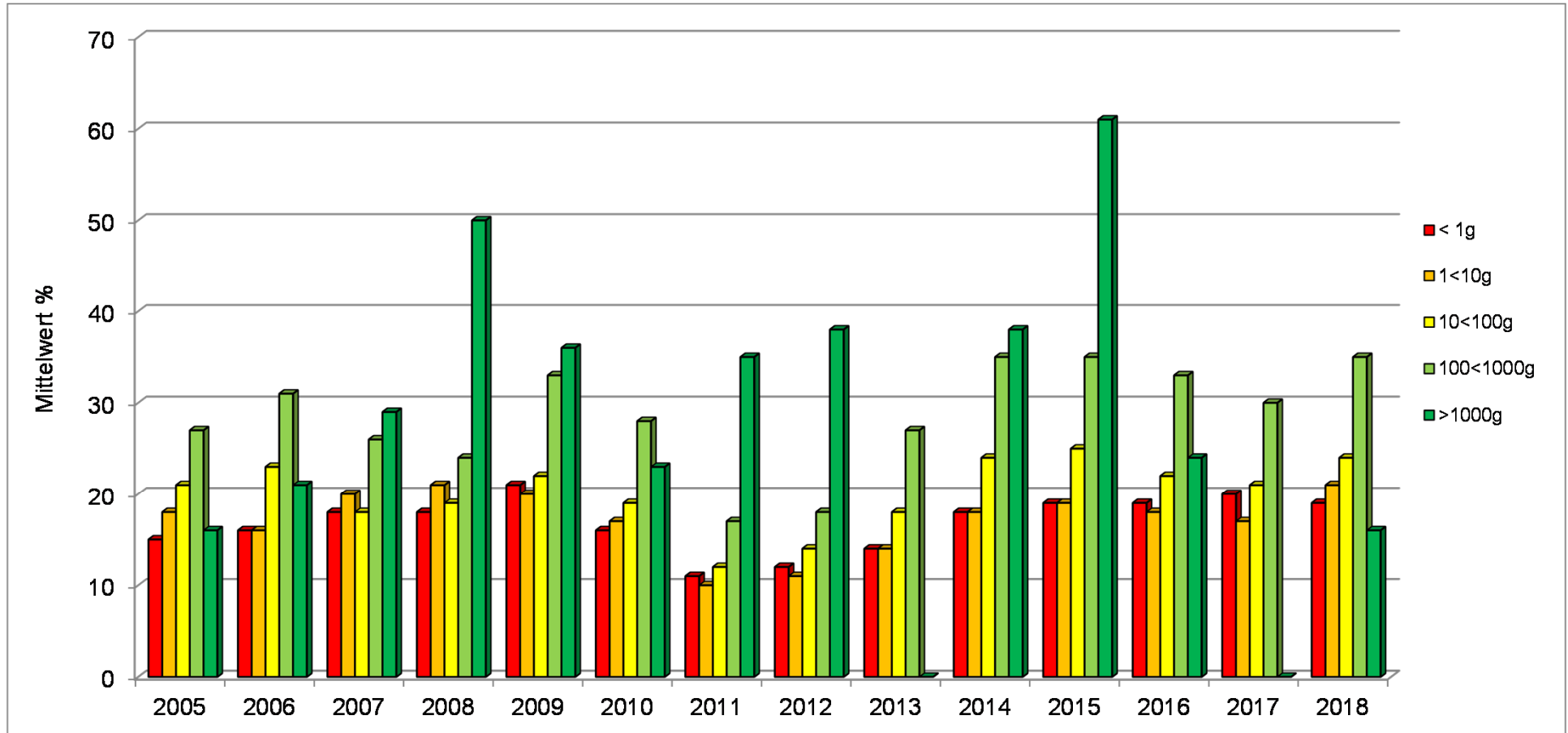
Heroin-HCl 2018

Mittlere Betäubungsmittelgehalte

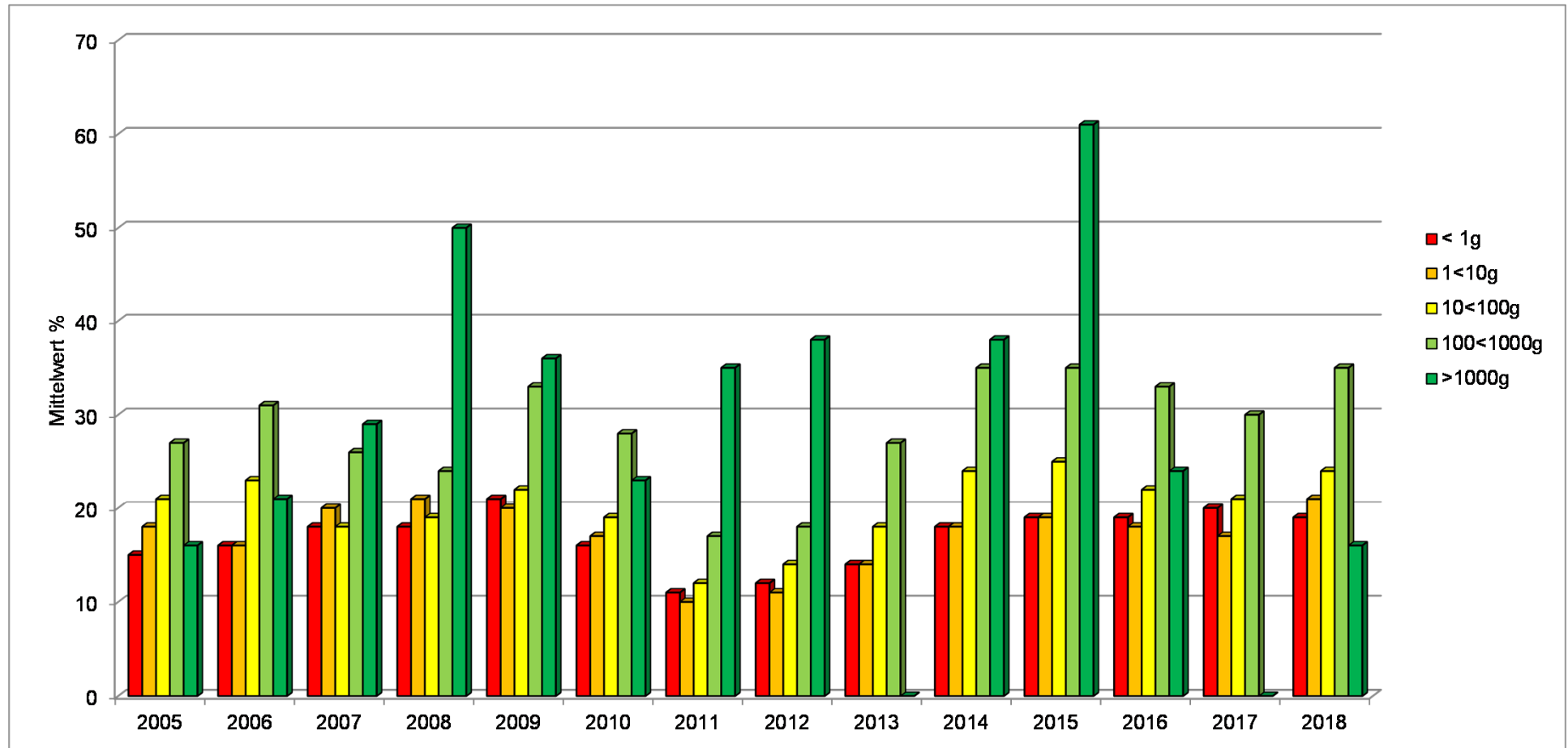
| Einzelkonfiskat- grösse | Anzahl Untersuchungen | Mittelwert (%) Base | Standard- abweichung (%) |
|----------------------------|--------------------------|------------------------|-----------------------------|
| < 1 | 57 (101) | 21 (22) | ± 12 (± 12) |
| 1 < 10 | 322 (459) | 23 (19) | ± 12 (± 9.0) |
| 10 < 100 | 258 (275) | 26 (23) | ± 15 (± 13) |
| 100 < 1000 | 140 (121) | 39 (33) | ± 19 (± 16) |
| > 1000 | 1 (0) | 17 (-) | - (-) |



Heroin-Base Gehalt 2005 – 2018



Heroin-HCl Gehalt 2005 – 2018



Heroin-Base Gehaltswerte 2018

| Mengenbereich Statistischer Wert | < 1 g | < 1 – 10 g | < 10 - 100 g | < 100 - 1000 g | > 1000 g |
|--|---------------------|------------------------|-------------------------|-------------------------|--------------------|
| Gesamtgewicht [g] Total: 86'654 (72'567) | 98 (97) | 8140 (10444) | 15305 (16006) | 62111 (46020) | 1000 (0) |
| Anzahl Untersuchungen Total: 778 (956) | 57 (101) | 322 (459) | 258 (275) | 140 (121) | 1 (0) |
| Median [%] | 18 (17) | 18 (16) | 20 (17) | 38 (28) | 16 (-) |
| Oberes Quartil (75 %) | 21 (22) | 23 (19) | 26 (23) | 52 (46) | 16 (-) |
| Unteres Quartil (25 %) | 13 (14) | 15 (13) | 15 (12) | 18 (15) | 16 (-) |
| Minimum | 0.2 (2.3) | 1.0 (0.6) | 1.3 (1.5) | 0.5 (3.4) | 16 (-) |
| Maximum | 58 (83) | 61 (82) | 61 (80) | 64 (58) | 16 (-) |

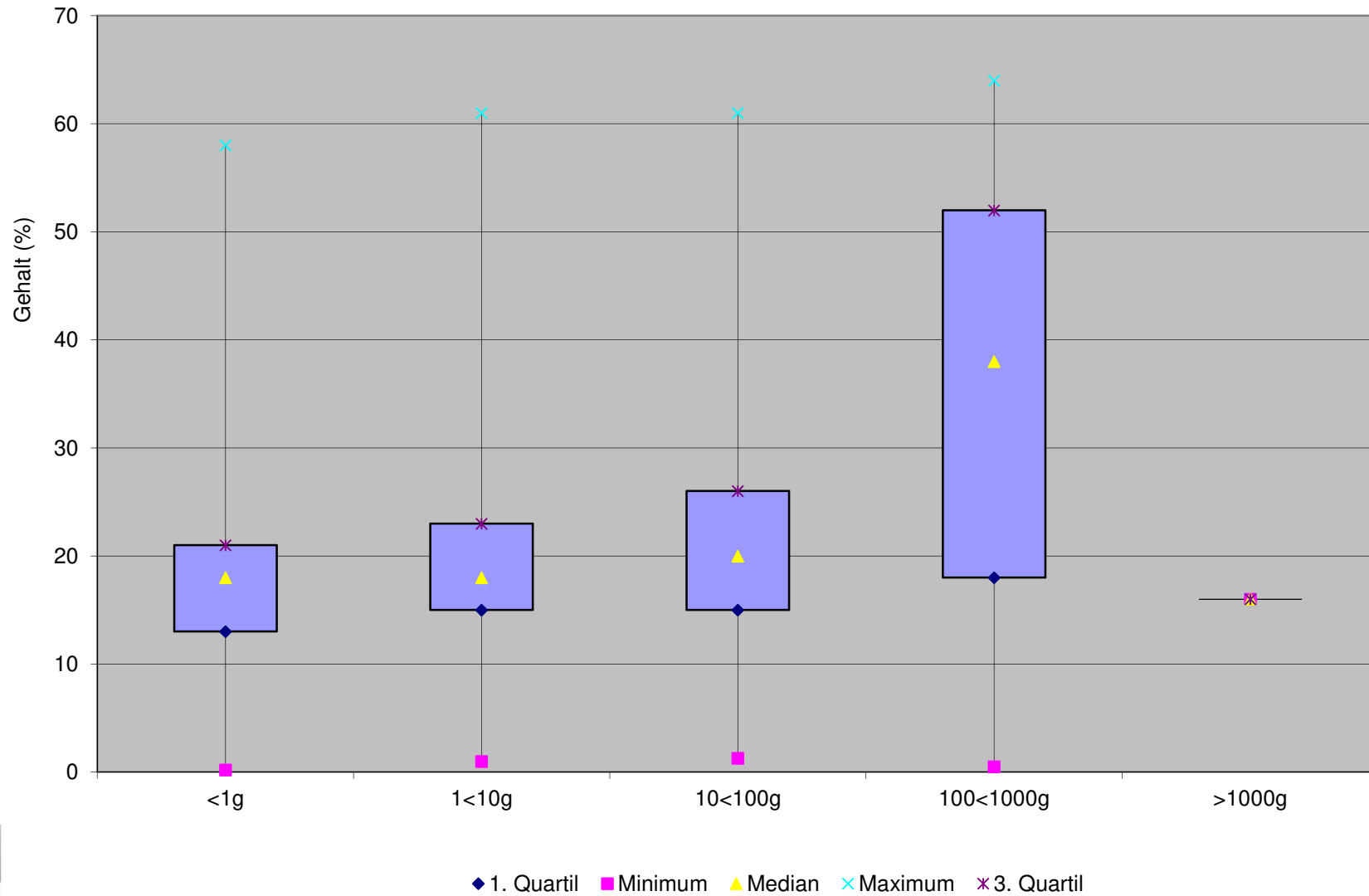


Heroin-HCl Gehaltswerte 2018

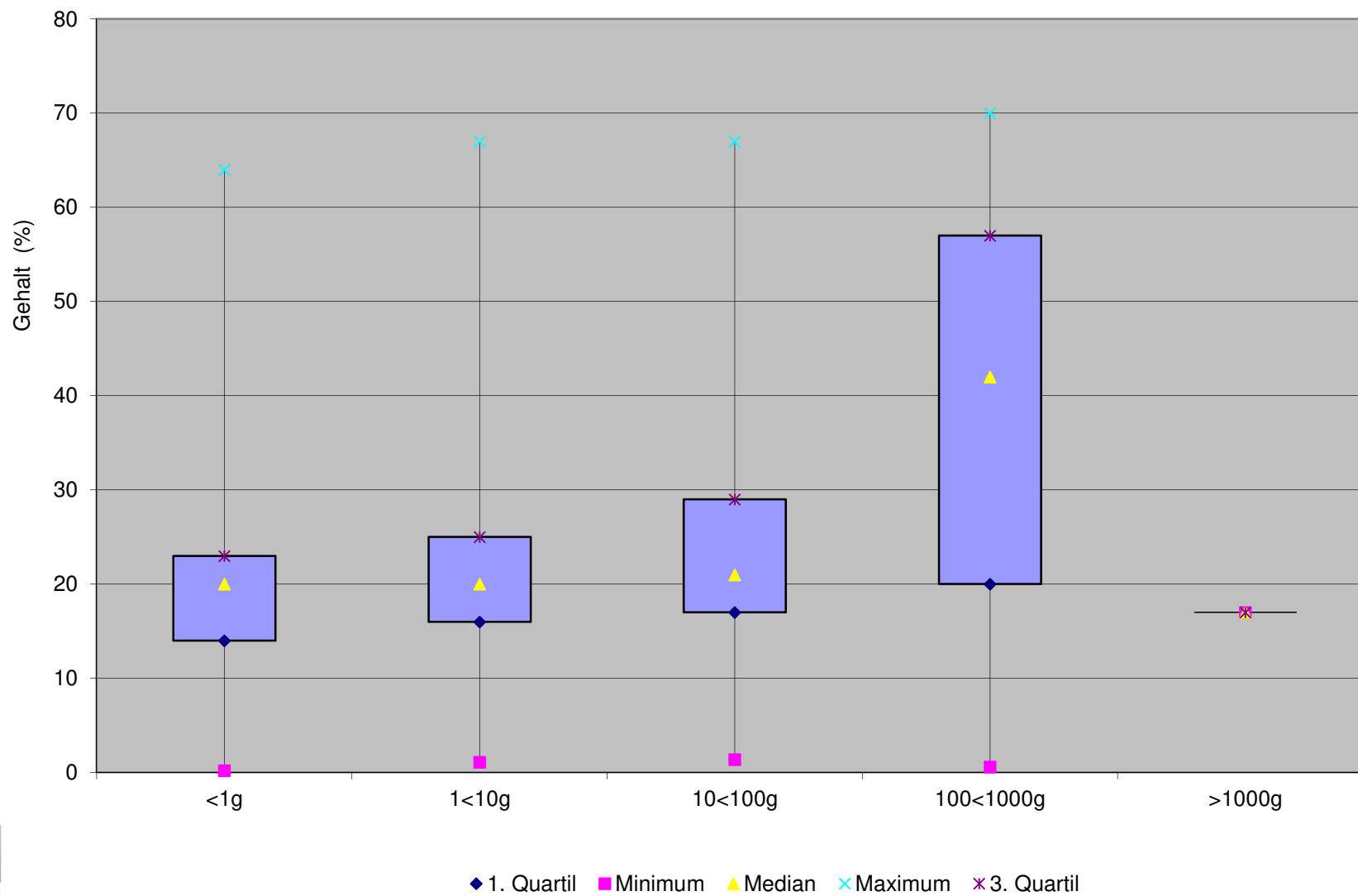
| Mengenbereich Statistischer Wert | < 1 g | < 1 – 10 g | < 10 - 100 g | < 100 - 1000 g | > 1000 g |
|--|---------------------|------------------------|-------------------------|-------------------------|--------------------|
| Gesamtgewicht [g] Total: 86'654 (72'567) | 98 (97) | 8140 (10444) | 15305 (16006) | 62111 (46020) | 1000 (0) |
| Anzahl Untersuchungen Total: 778 (956) | 57 (101) | 322 (459) | 258 (275) | 140 (121) | 1 (0) |
| Median [%] | 20 (18) | 20 (18) | 21 (19) | 42 (30) | 17 (-) |
| Oberes Quartil (75 %) | 23 (25) | 25 (21) | 29 (25) | 57 (50) | 17 (-) |
| Unteres Quartil (25 %) | 14 (16) | 16 (14) | 17 (13) | 20 (17) | 17 (-) |
| Minimum | 0.2 (2.3) | 1.1 (0.6) | 1.4 (1.5) | 0.6 (3.4) | 17 (-) |
| Maximum | 64 (83) | 67 (82) | 67 (80) | 70 (58) | 17 (-) |



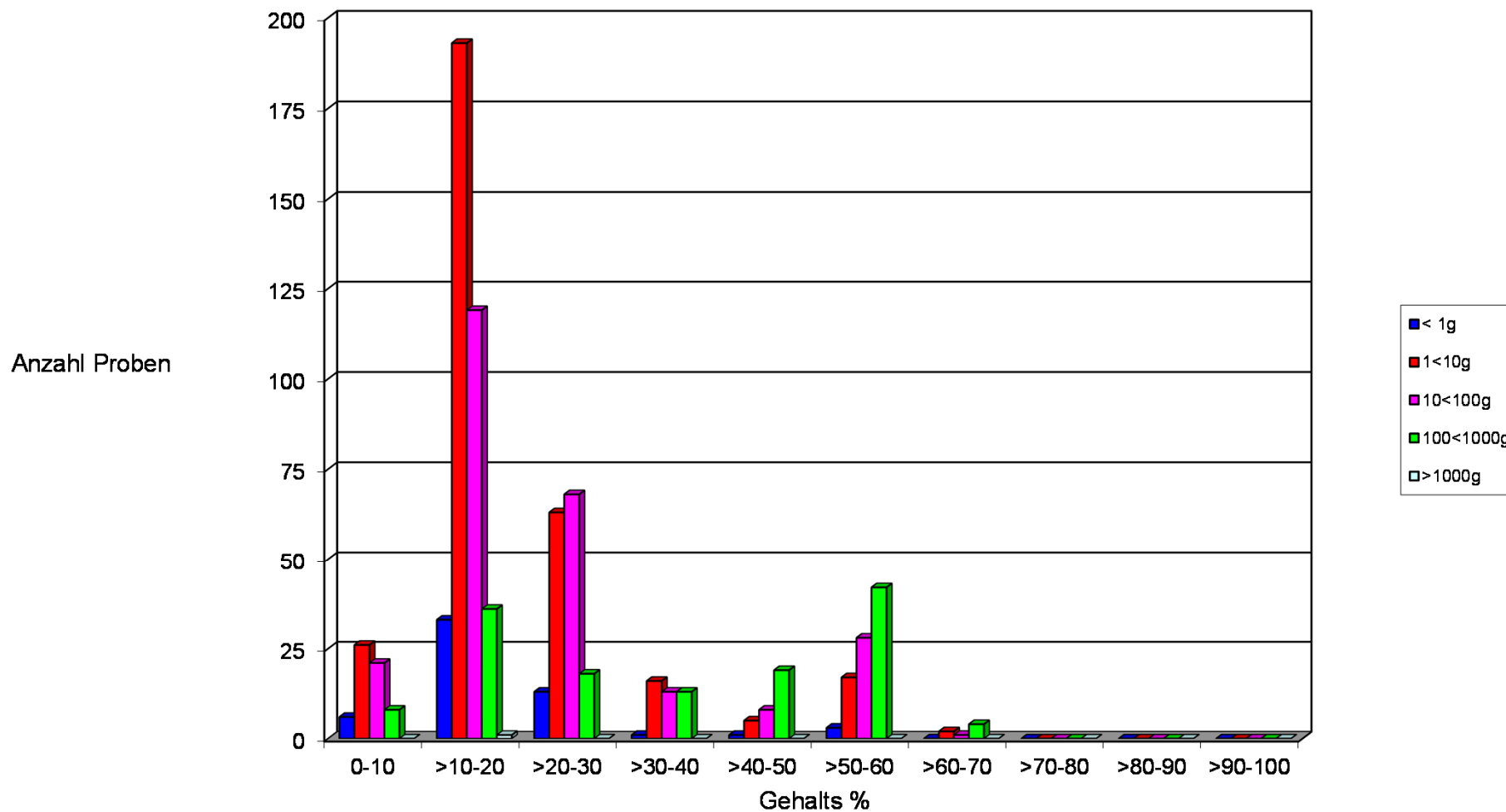
Heroin-Base Gehaltswerte 2018



Heroin-HCl Gehaltswerte 2018



Heroin-Base Detailübersicht 2018



Heroin-HCl Detailübersicht 2018

