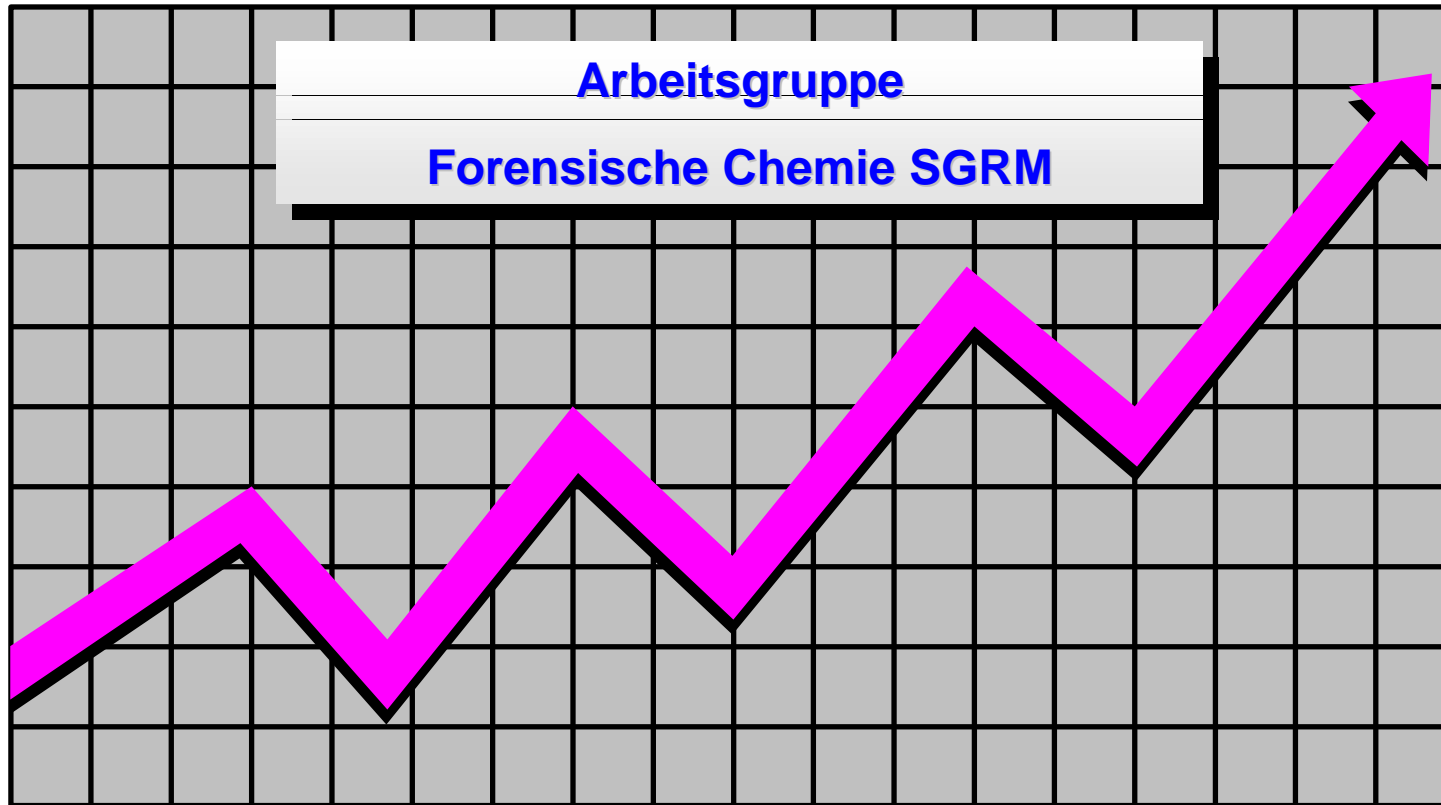
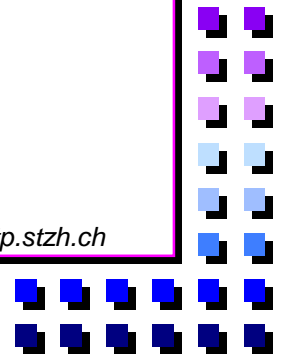


Betäubungsmittelstatistik 2000

Cocain & Heroin Gehaltswerte

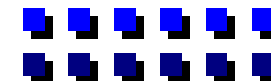


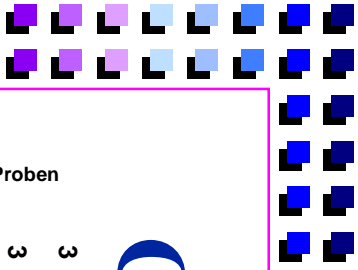
Bezugsadresse: Dr. M.G. Bovens Stadtpolizei Zürich Wissenschaftlicher Dienst Zeughausstr. 11 8004 Zürich e-mail: michael.bovens@stp.stzh.ch



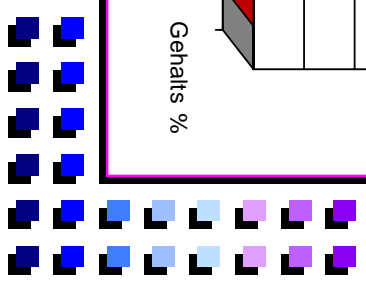
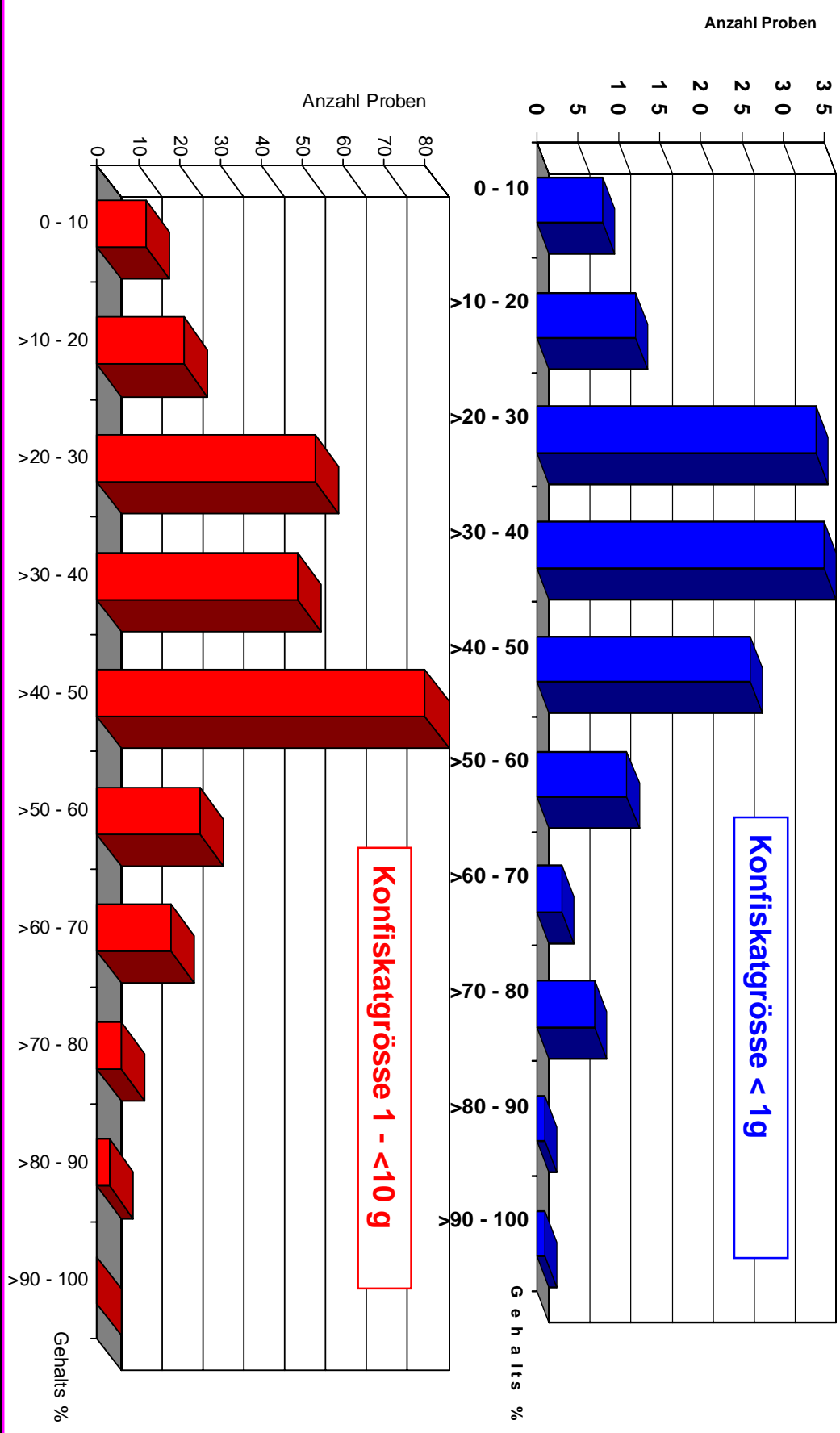
Cocain Base Gehaltswerte 2000

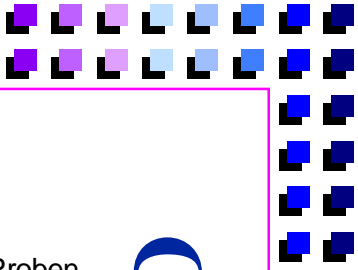
Mengenbereich / Statistischer Wert	< 1 g	1 < 10 g	10 < 100 g	100 < 1000 g	≥ 1000 g
Gesamtgewicht [g]	758	6693	11543	53392	52311
Anzahl Untersuchungen	138	267	225	99	24
Median [%]	33	36	40.2	60	67.5
oberes Quartil (75 %)	44.6	49.1	51	71.4	71.4
unteres Quartil (25 %)	24	26.8	28	40.6	62.9
Quantil (84 %)	51.1	53.3	58	75.9	79.3
Quantil (16 %)	22	22.3	24.7	29	47.6



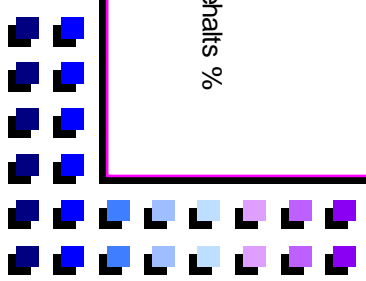
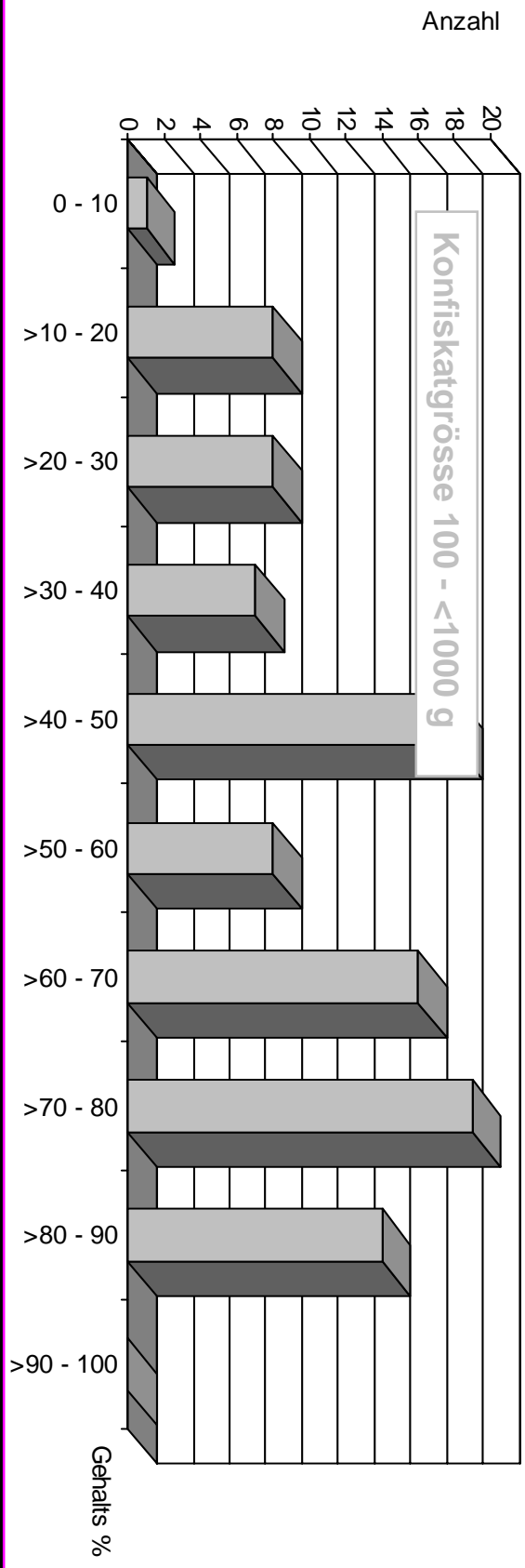
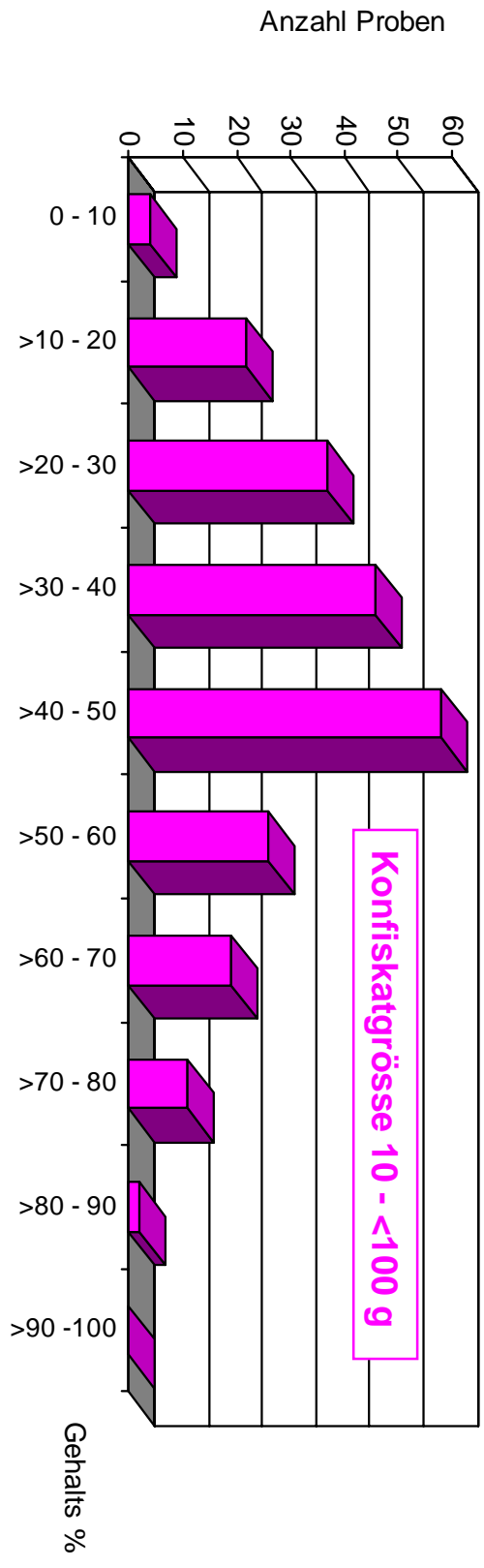


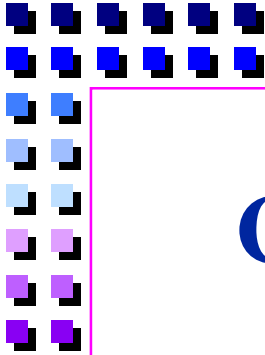
Cocain-Base Detailübersicht 2000 (SGRM)



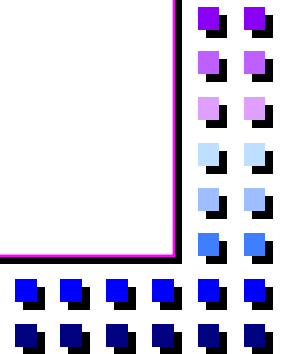
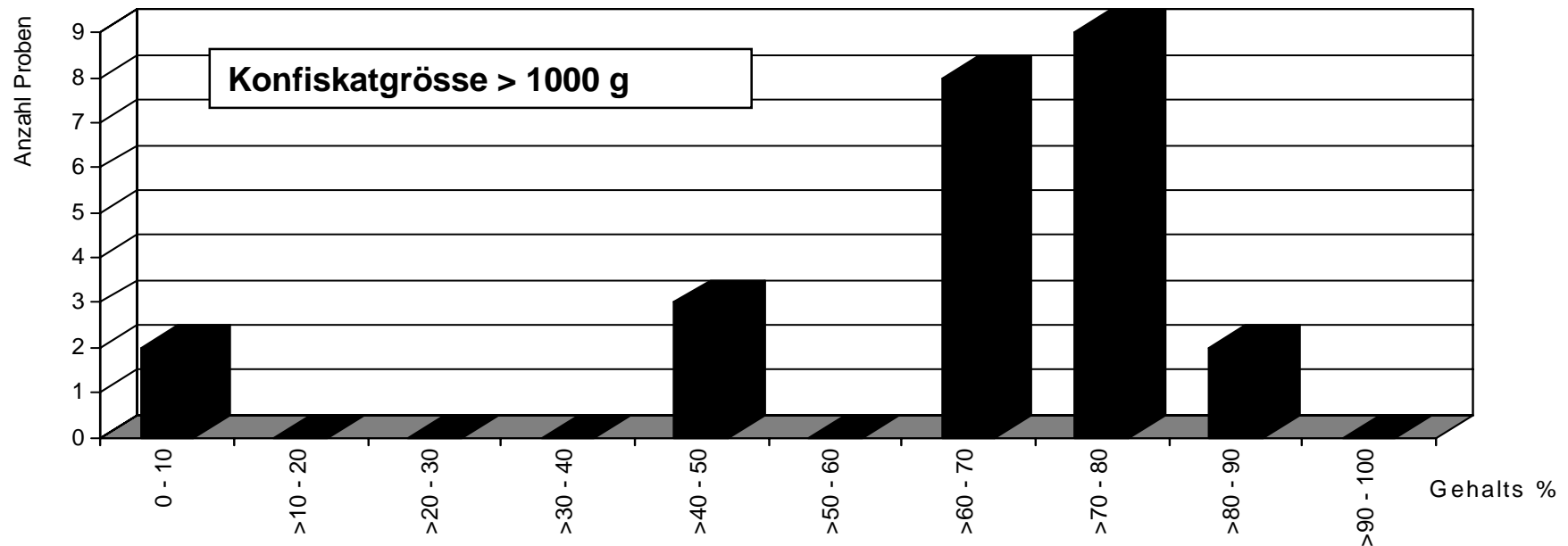


Cocain-Base Detailübersicht 2000 (SGRM)





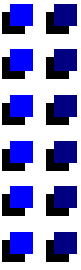
Cocain-Base Detailübersicht 2000 (SGRM)



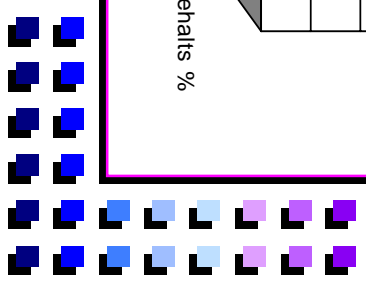
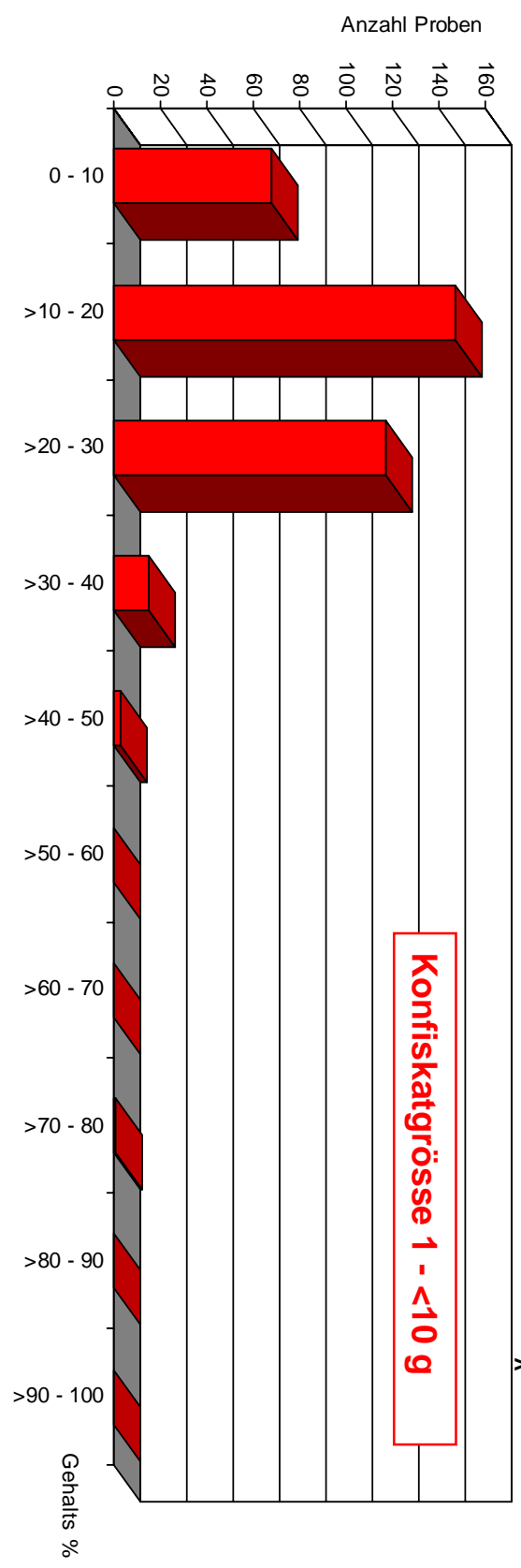
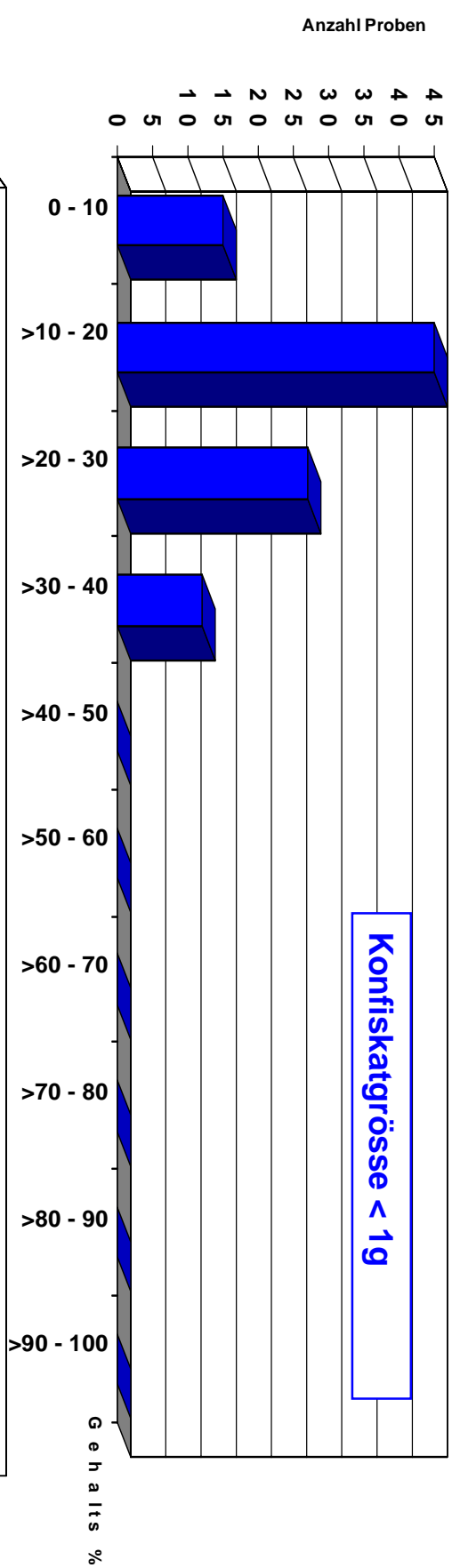
Heroin Base Gehaltswerte 2000

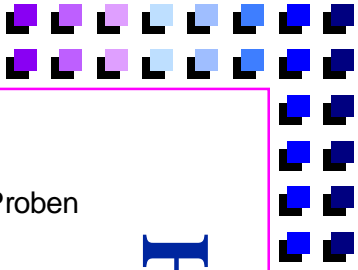
Mengenbereich / Statistischer Wert	< 1 g	1 < 10 g	10 < 100 g	100 < 1000 g	≥ 1000 g
Gesamtgewicht [g]	135	12305	9474	228798	42007
Anzahl Untersuchungen	99	351	203	159	8
Median [%]	18.2	18.2	18	29	31.5
oberes Quartil (75 %)	27	22.7	22.7	45.3	43.3
unteres Quartil (25 %)	12	12	13	17	20
Quantil (84 %)	28	26	27.3	49.9	48.9
Quantil (16 %)	11	9.6	10	14	17.5



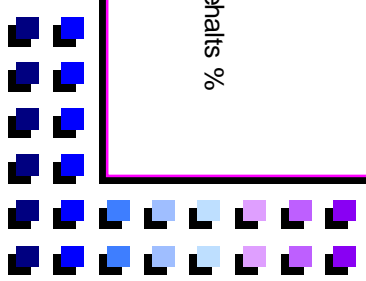
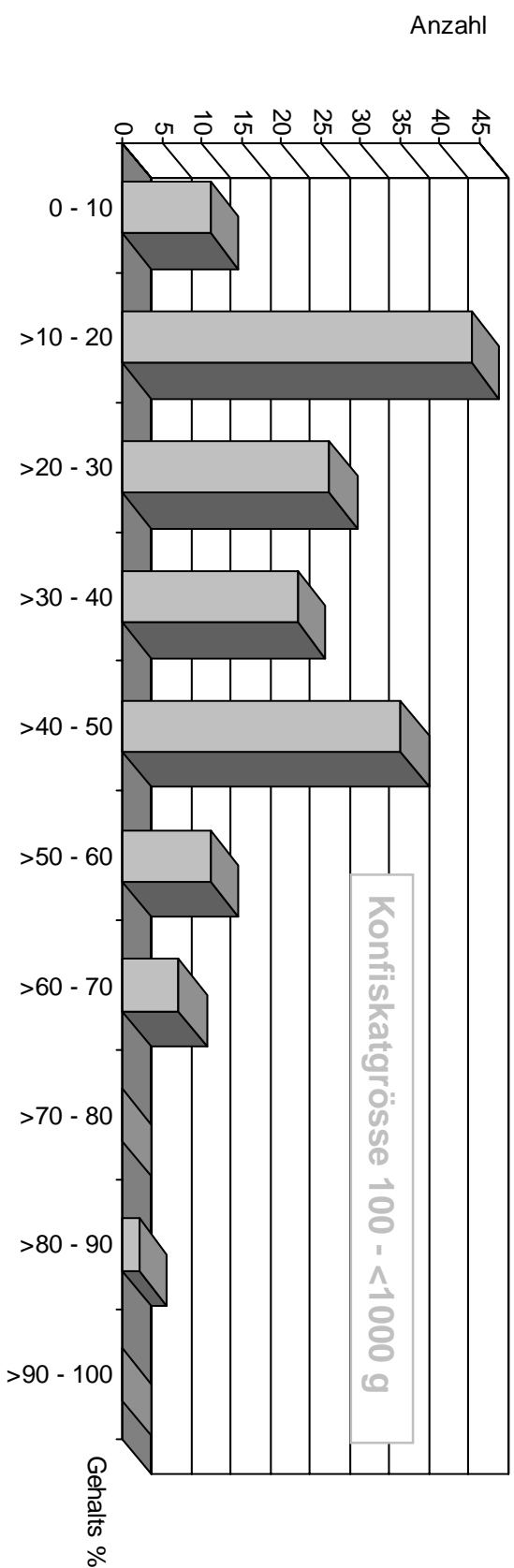
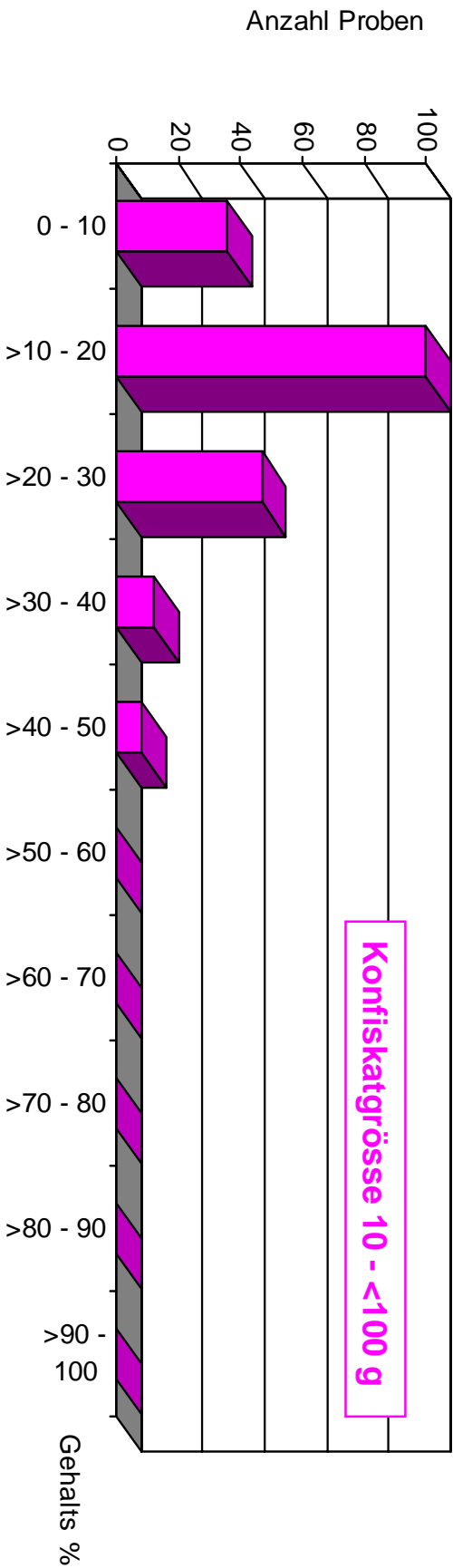


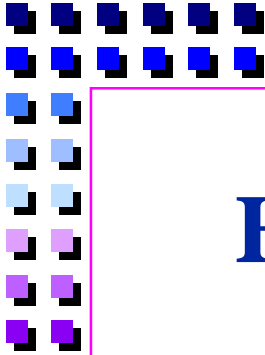
Heroin-Base Detailübersicht 2000 (SGRM)



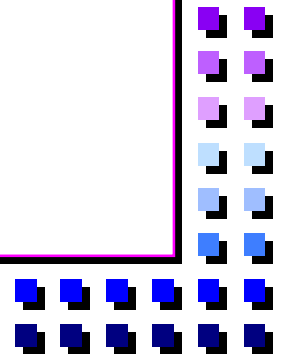
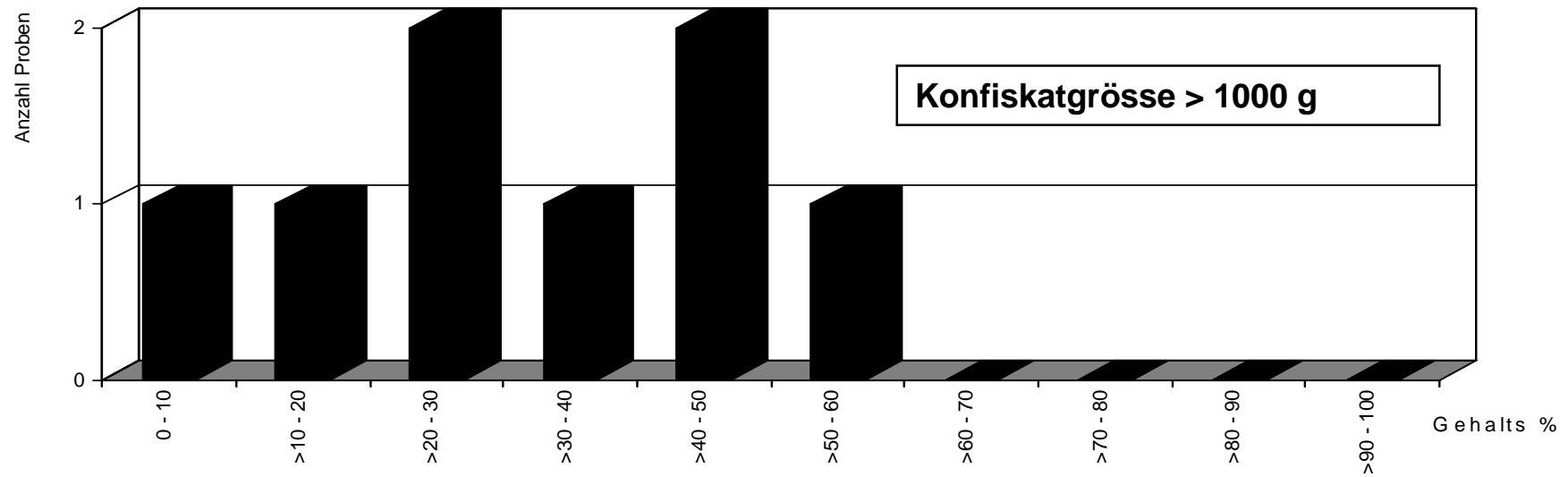


Heroin-Base Detailübersicht 2000 (SGRM)





Heroin-Base Detailübersicht 2000 (SGRM)



Cocain Untersuchungen 2000 (SGRM)

Mittlere Betäubungsmittelgehalte (als Base)

Einzelkonfiskat- grösse (g)	Anzahl Untersuchungen	Mittelwert Reinheit (%)	Standard- abweichung (%)
< 1	138	36.1	± 17.3
1 < 10	267	38.5	± 16.6
10 < 100	225	40.6	± 16.6
100 < 1000	99	55	± 21.6
≥ 1000	24	62.6	± 20.3

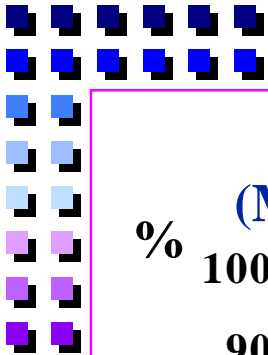


Heroin Untersuchungen 2000

Mittlere Betäubungsmittelgehalte (als Base)

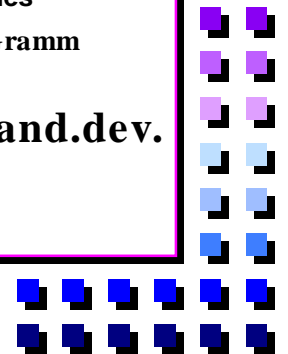
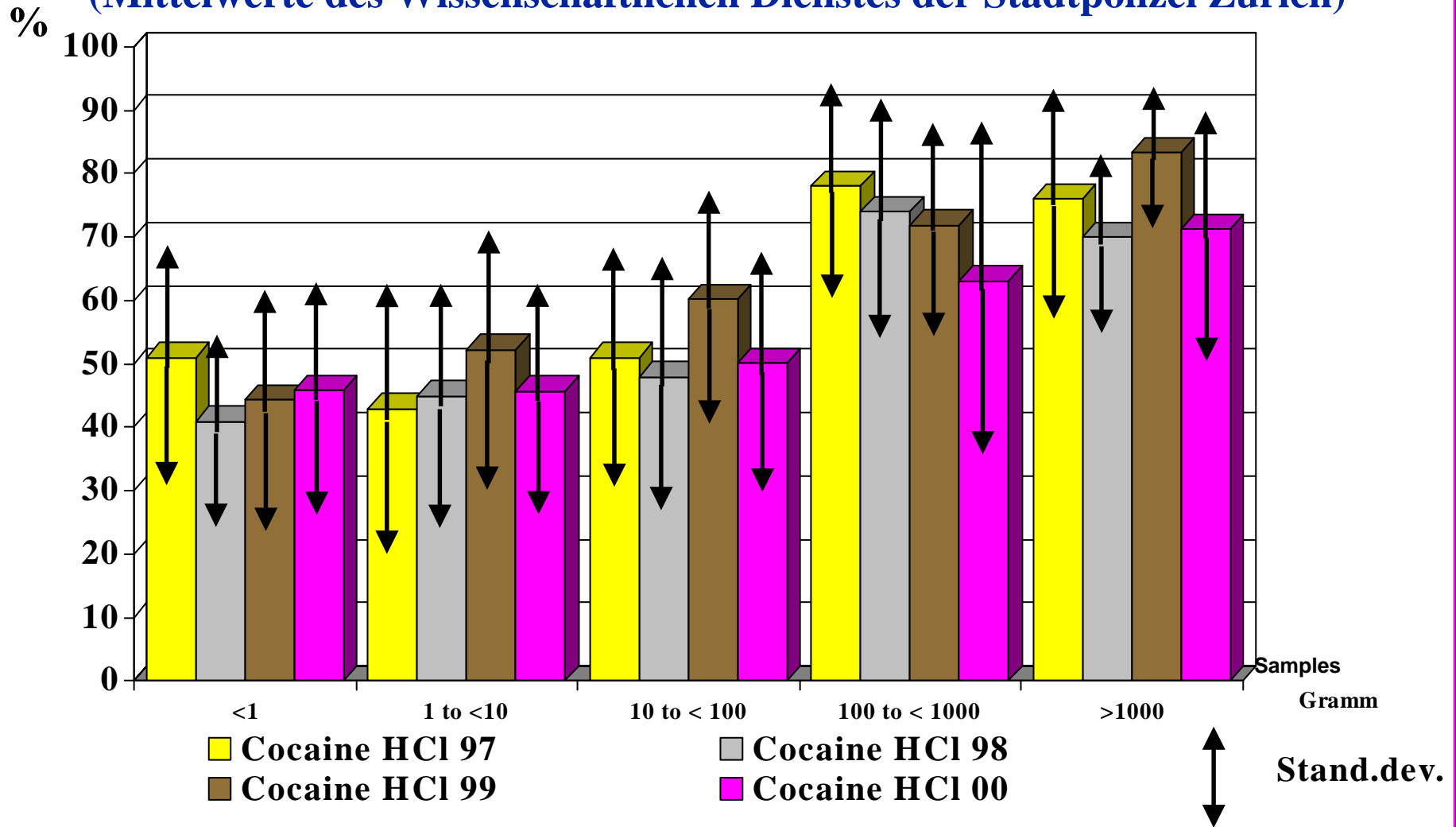
Einzelkonfiskat- grösse (g)	Anzahl Untersuchungen	Mittelwert Reinheit (%)	Standard- abweichung (%)
< 1	99	19.1	± 8.1
1 < 10	351	18	± 8.4
10 < 100	203	18.6	± 9.2
100 < 1000	159	31.7	± 17.2
≥ 1000	8	32.3	± 17.6

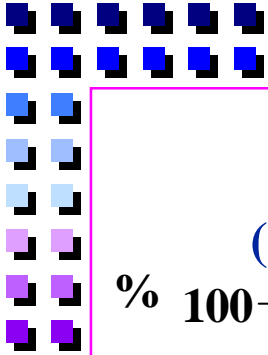




Cocaine HCl Content 1997/98/99/00

(Mittelwerte des Wissenschaftlichen Dienstes der Stadtpolizei Zürich)





Heroin HCl Gehalt 1997/98/99/00

(Mittelwerte des Wissenschaftlichen Dienstes der Stadtpolizei Zürich)

