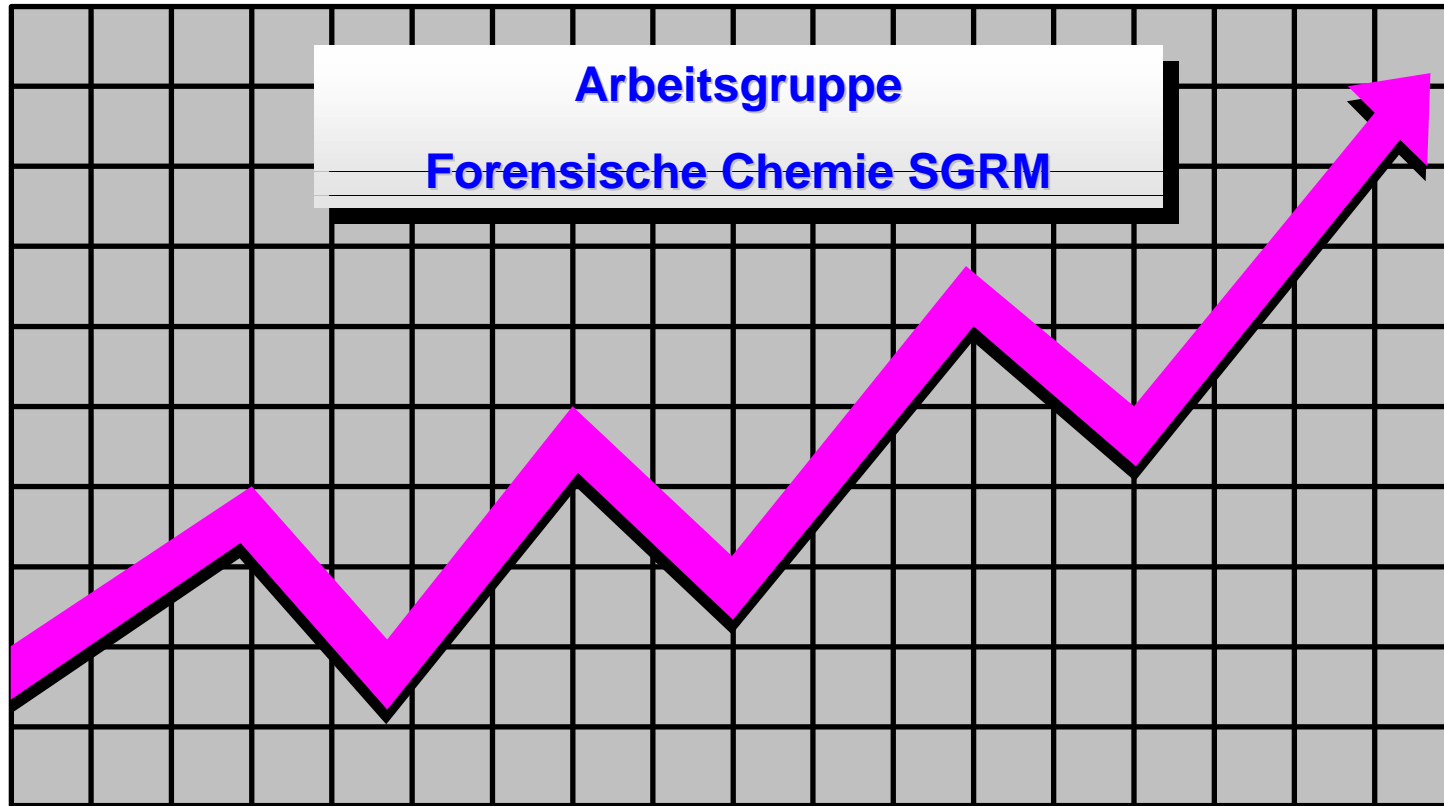


Betäubungsmittelstatistik 2003

Cocain & Heroin Gehaltswerte



Bezugsadresse: Dr. M.G. Bovens Stadtpolizei Zürich Wissenschaftlicher Dienst Zeughausstr. 11 8004 Zürich e-mail: michael.bovens@stp.stzh.ch



Cocain Untersuchungen 2003 (SGRM)

Mittlere Betäubungsmittelgehalte (als Base)

Einzelkonfiskatgrösse	Anzahl Untersuchungen n	Mittelwert (%) Base	Standardabweichung (%)
< 1	288	47	± 16
1 < 10	317	54	± 18
10 < 100	228	60	± 20
100 < 1000	87	69	± 19
> 1000	27	81	± 9



Heroin Untersuchungen 2003 (SGRM)

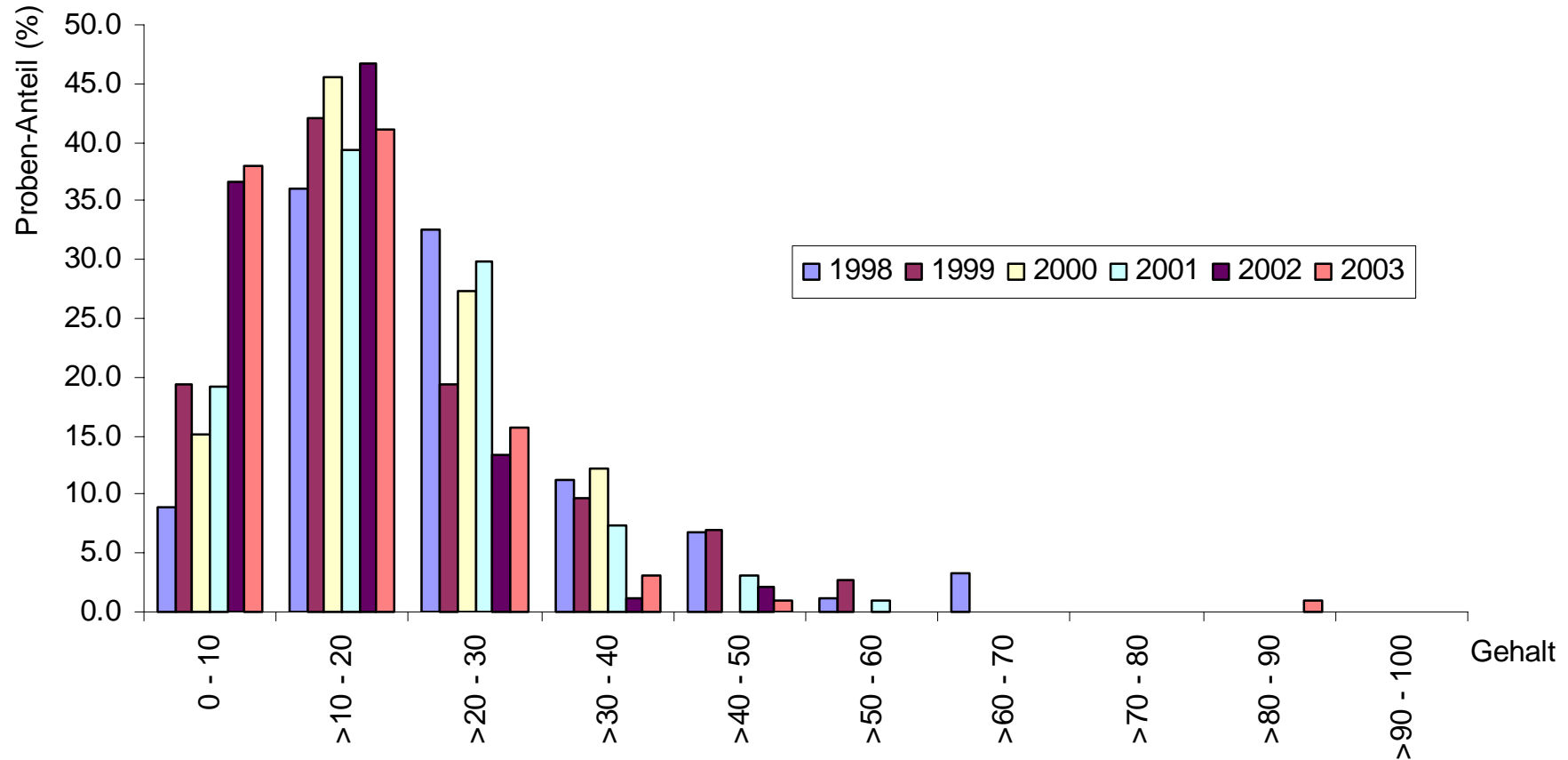
Mittlere Betäubungsmittelgehalte (als Base)

Einzelkonfiskatgrösse	Anzahl Untersuchungen	Mittelwert (%) Base	Standardabweichung
< 1	95	15	± 11
1 < 10	281	14	± 8
10 < 100	218	11	± 8
100 < 1000	154	21	± 17
> 1000	9	22	± 20



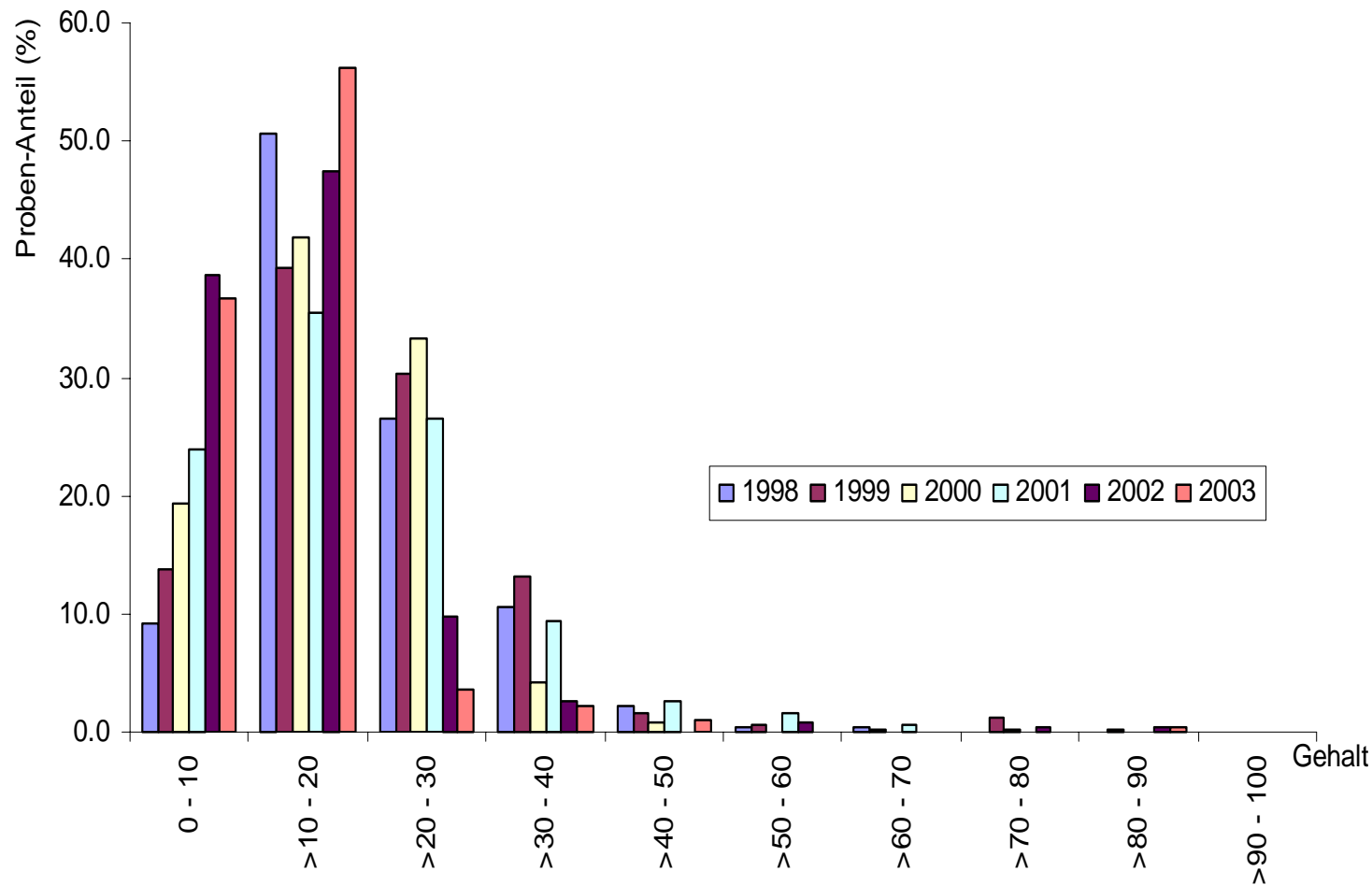
Heroin-Base Detailübersicht 1998-2003 (SGRM)

Konfiskatgrösse < 1 g



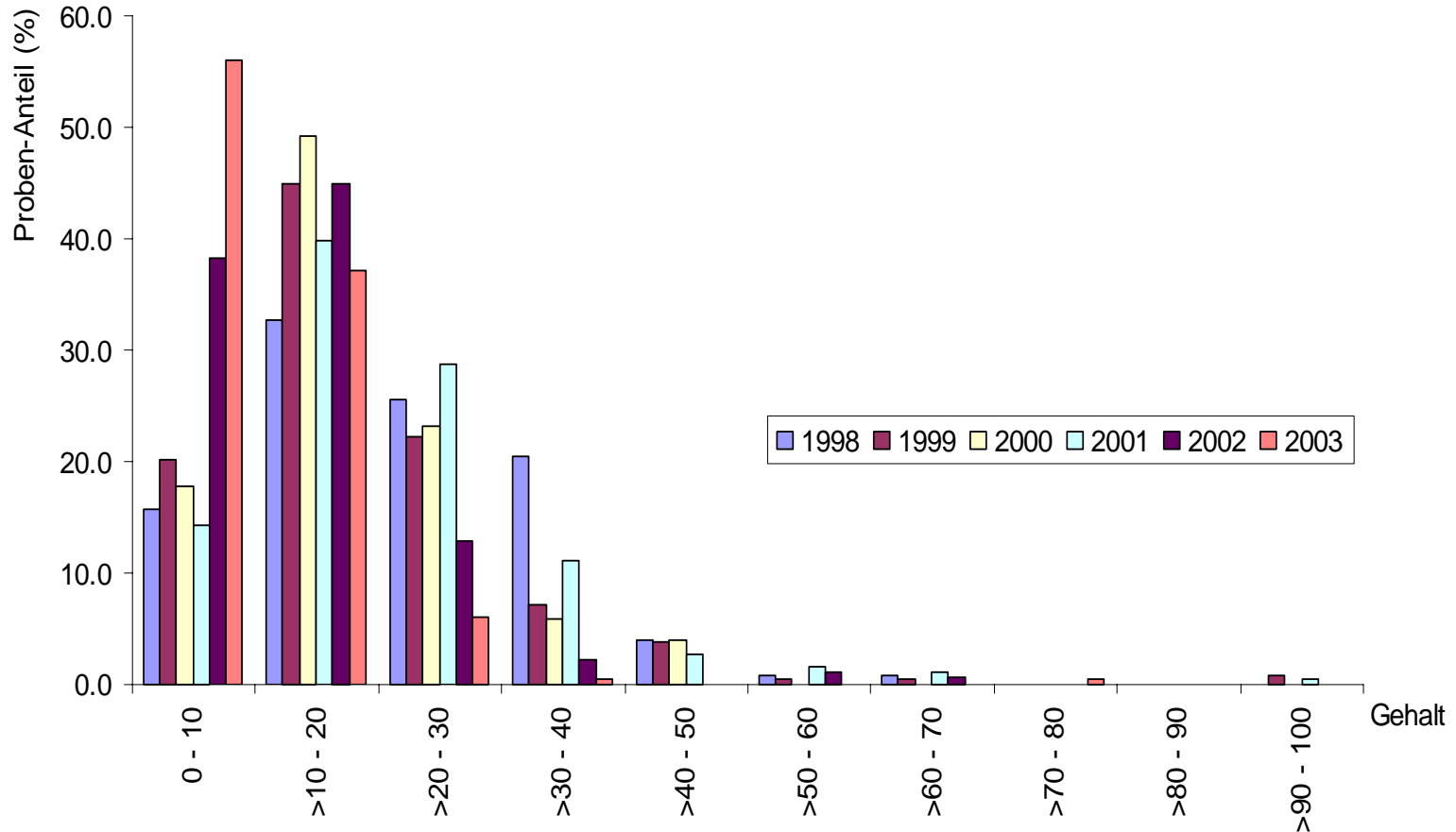
Heroin-Base Detailübersicht 1998-2003 (SGRM)

Konfiskatgrösse 1 - < 10 g



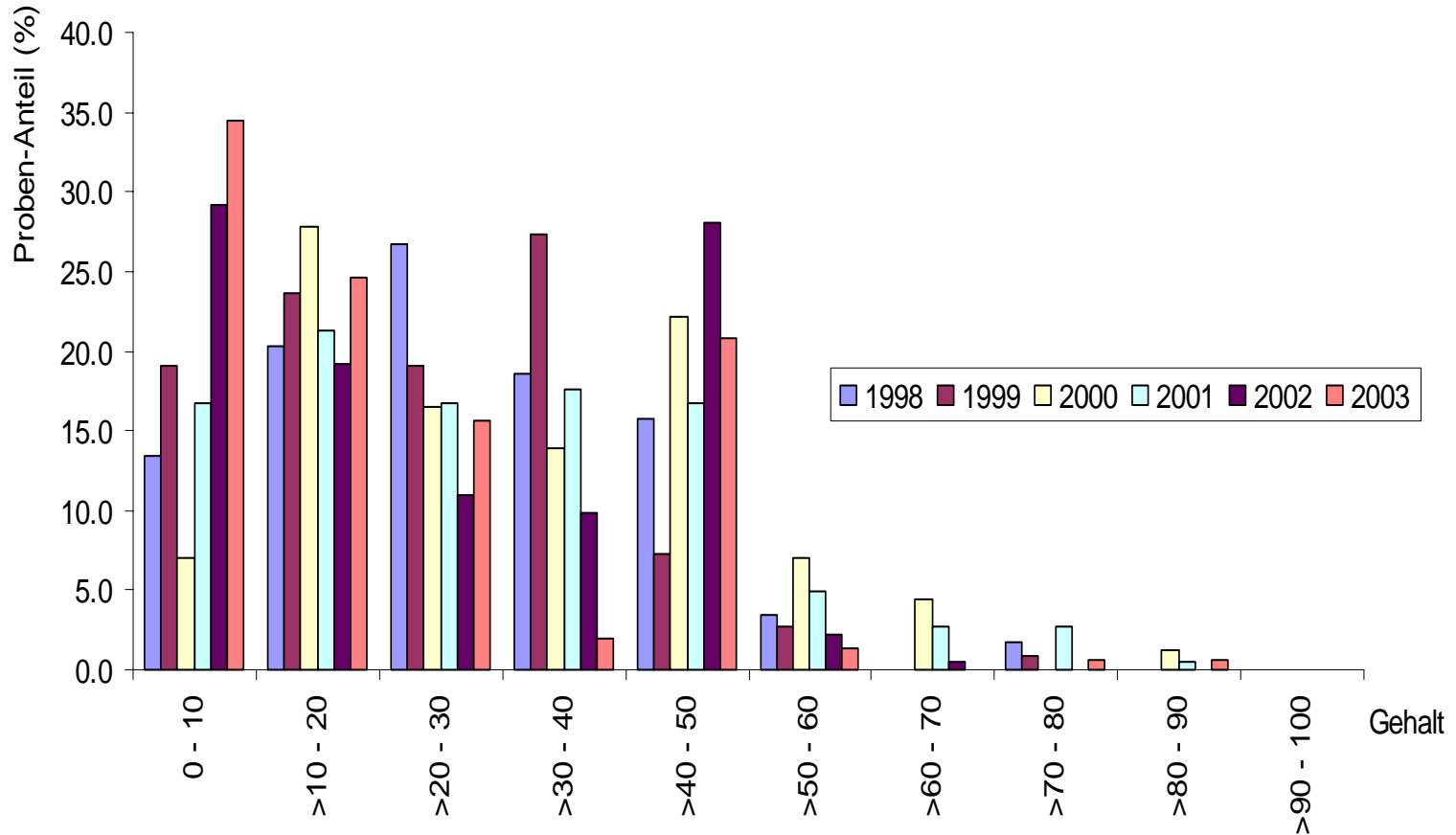
Heroin-Base Detailübersicht 1998-2003 (SGRM)

Konfiskatgrösse 10 - < 100 g



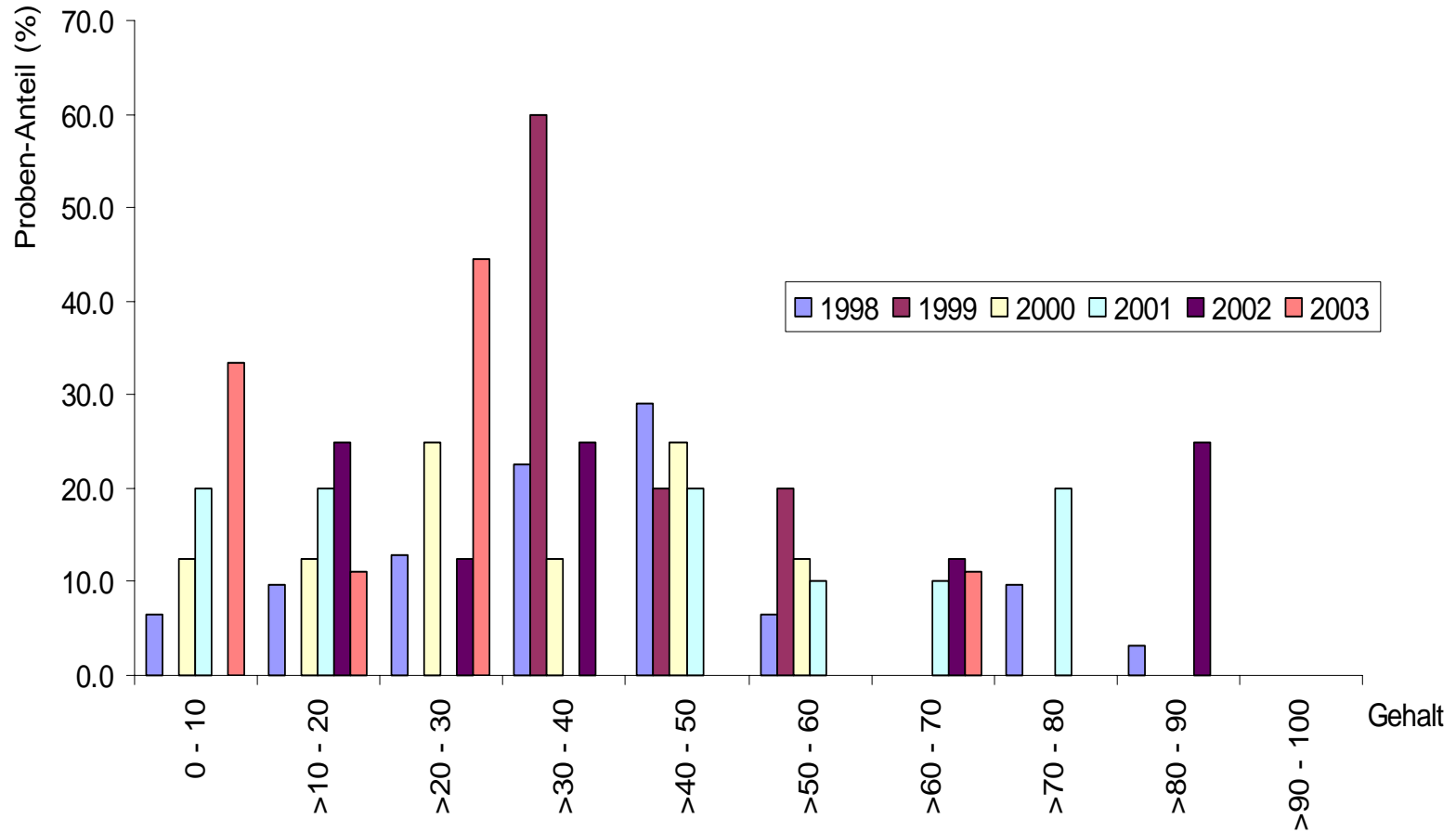
Heroin-Base Detailübersicht 1998-2003 (SGRM)

Konfiskatgrösse 100 - < 1000 g



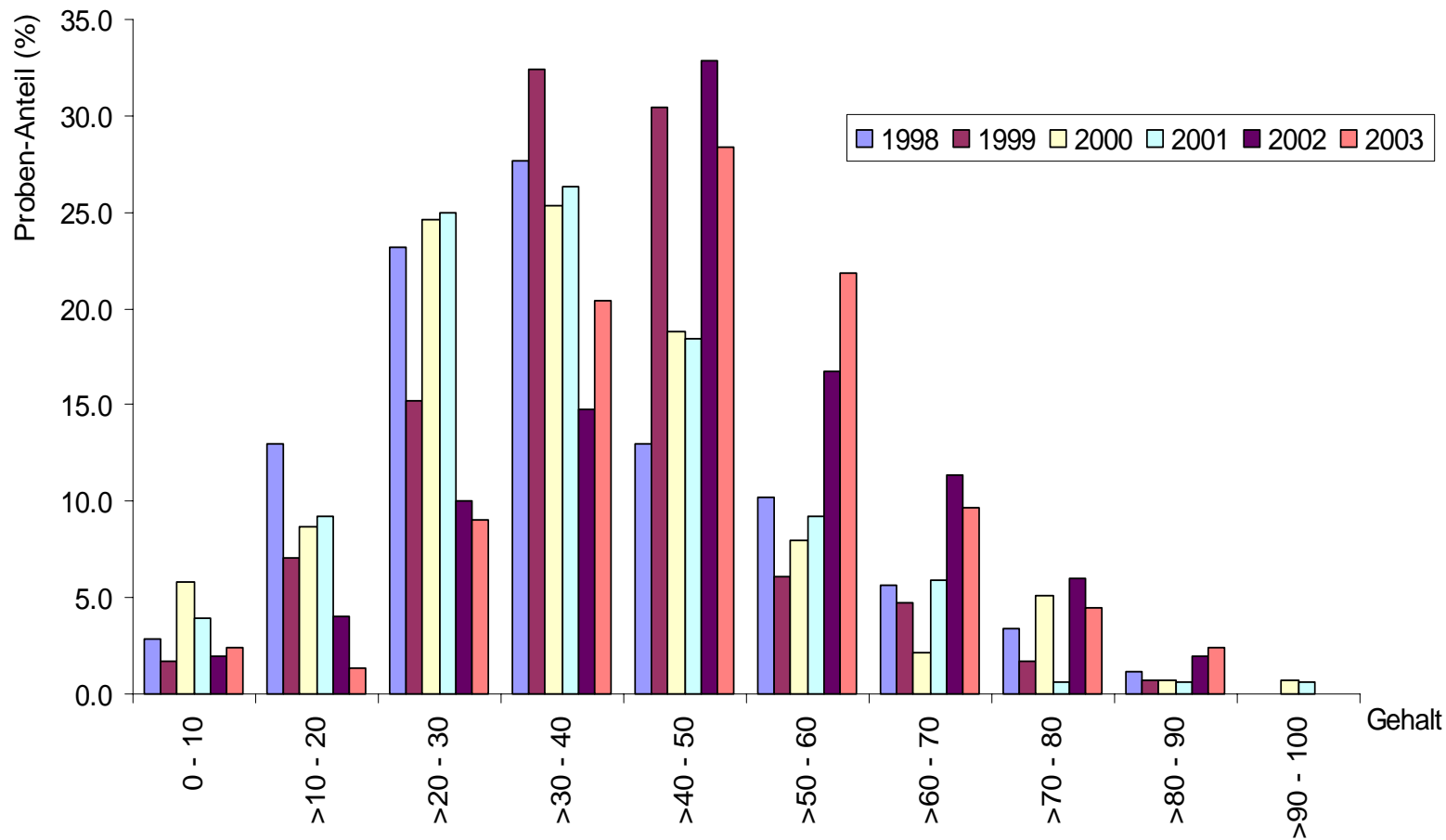
Heroin-Base Detailübersicht 1998-2003 (SGRM)

Konfiskatorösse > 1000 g



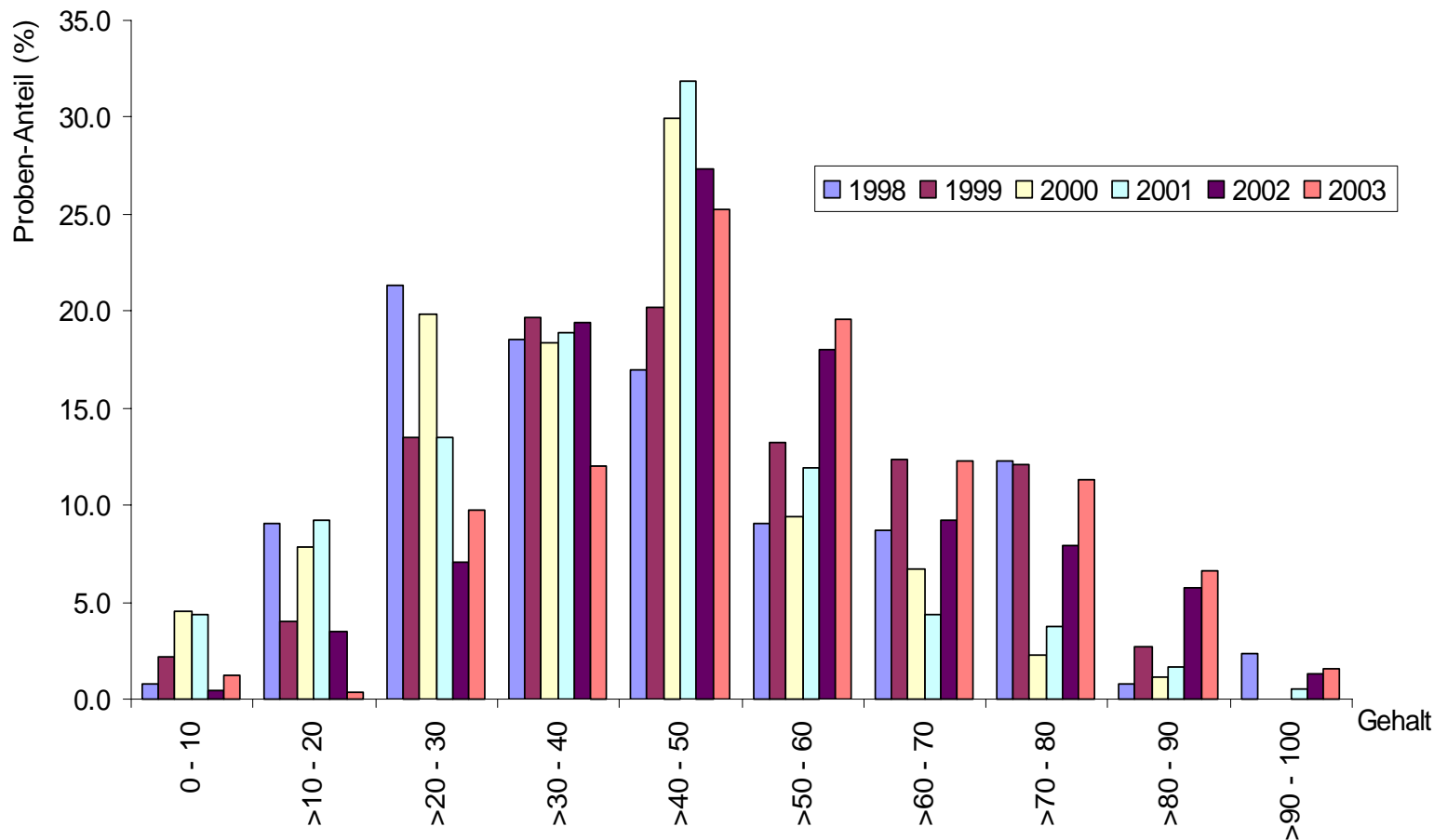
Cocain-Base Detailübersicht 1998-2003 (SGRM)

Konfiskatorösse < 1σ



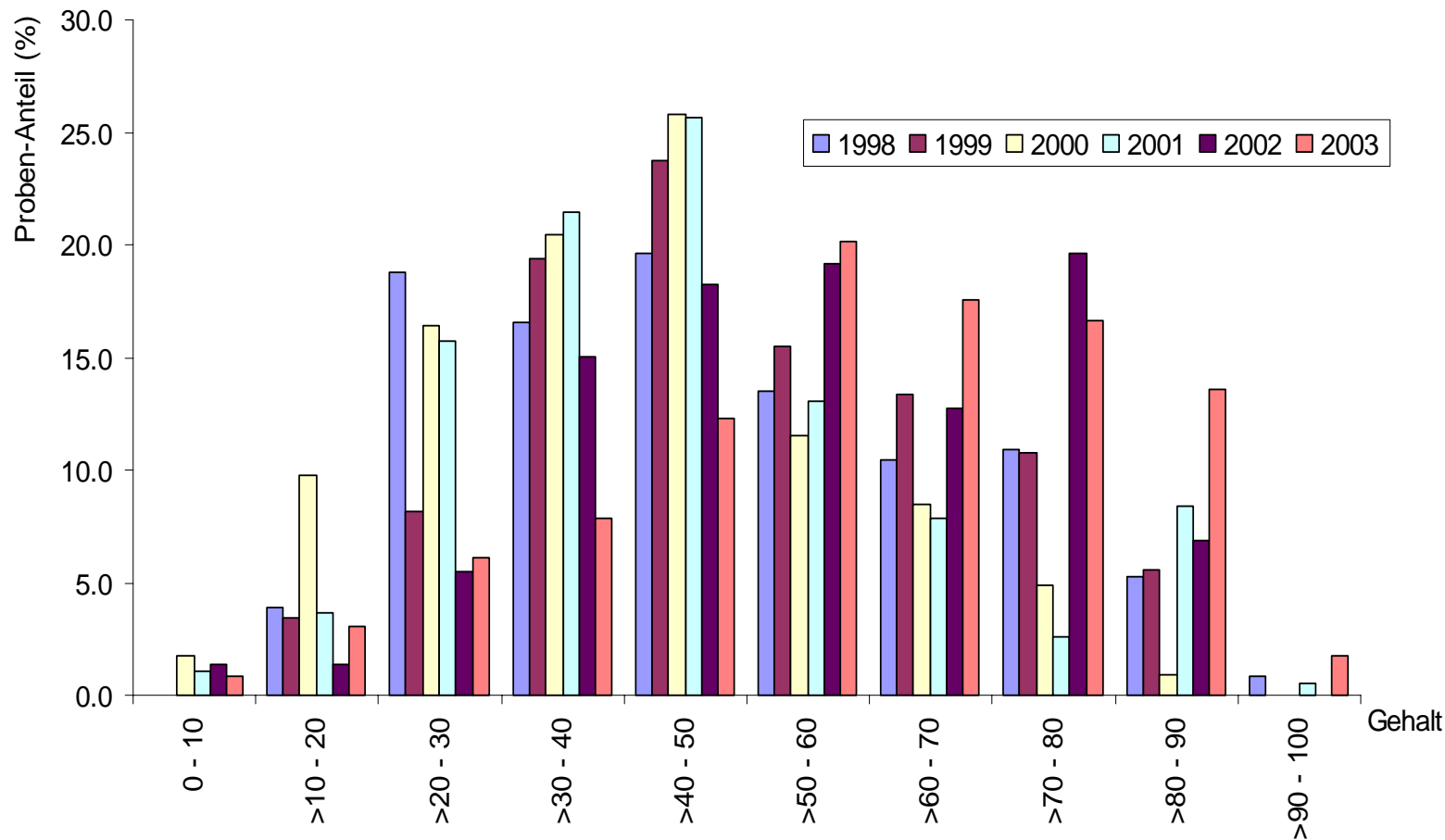
Cocain-Base Detailübersicht 1998-2003 (SGRM)

Konfiskatgrösse 1 - < 10 g



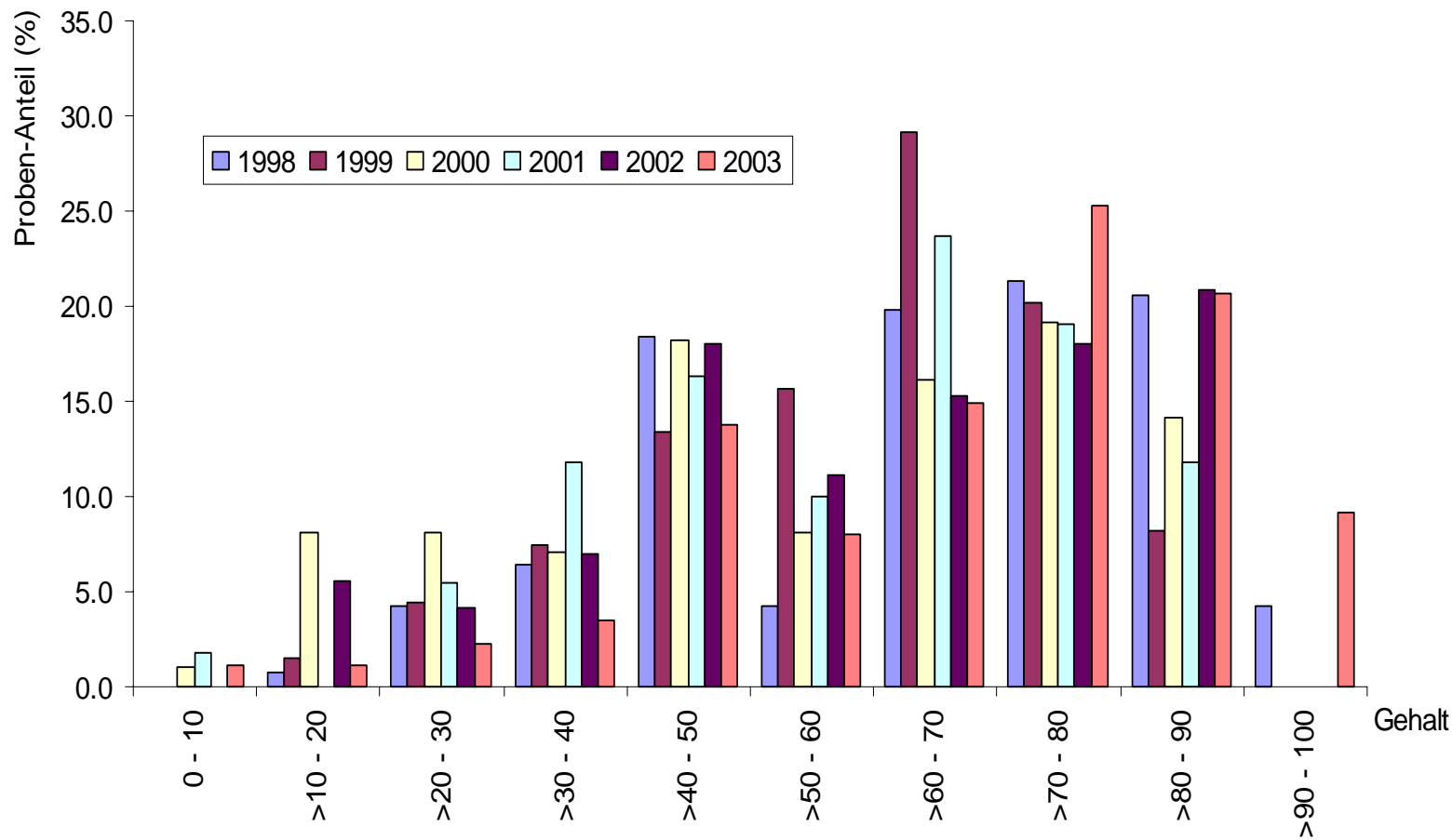
Cocain-Base Detailübersicht 1998-2003 (SGRM)

Konfiskatgröße 10 - < 100 g



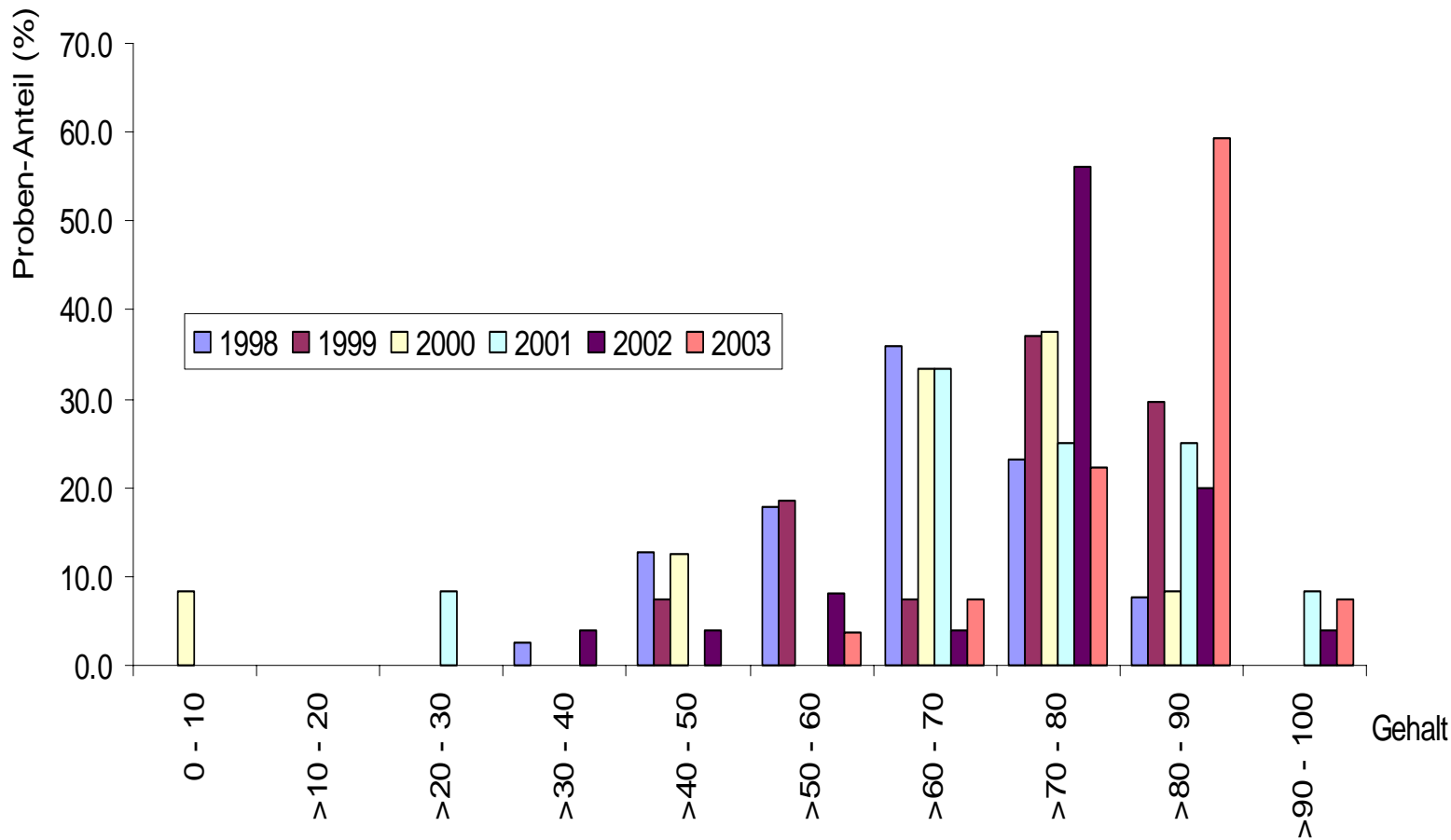
Cocain-Base Detailübersicht 1998-2003 (SGRM)

Konfiskatorösse 100 - < 1000 g

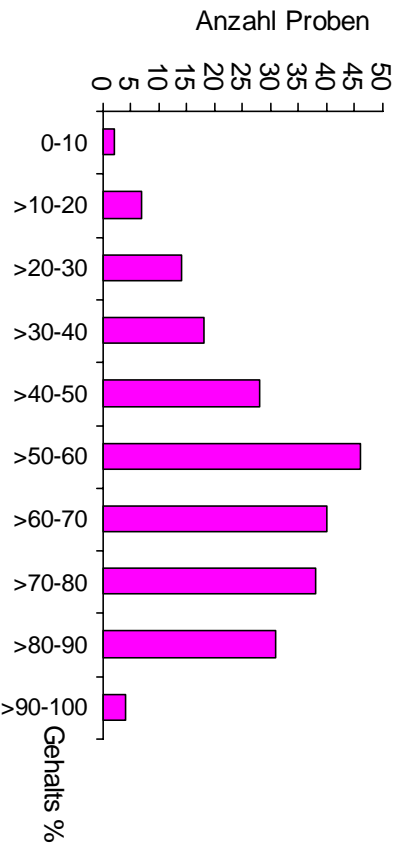
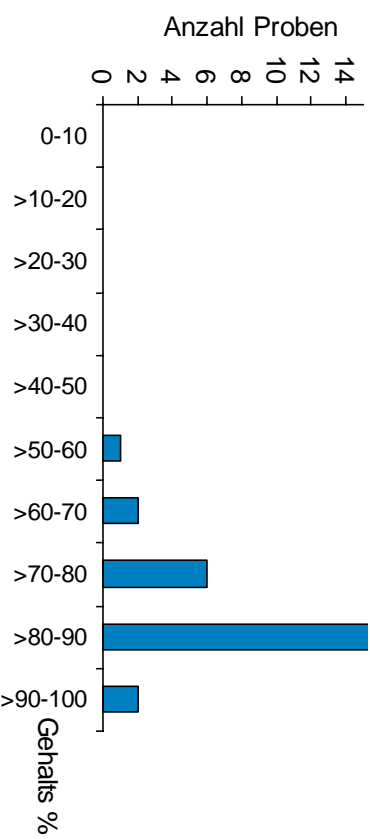
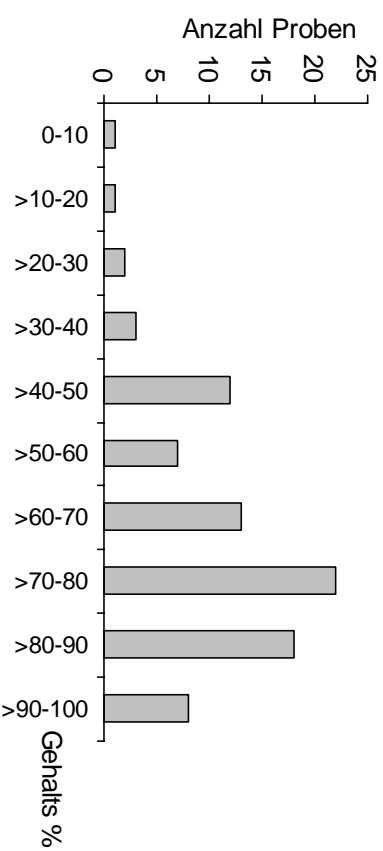
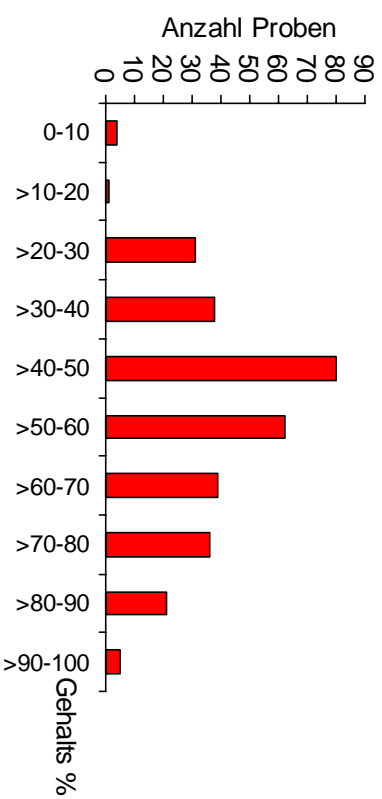
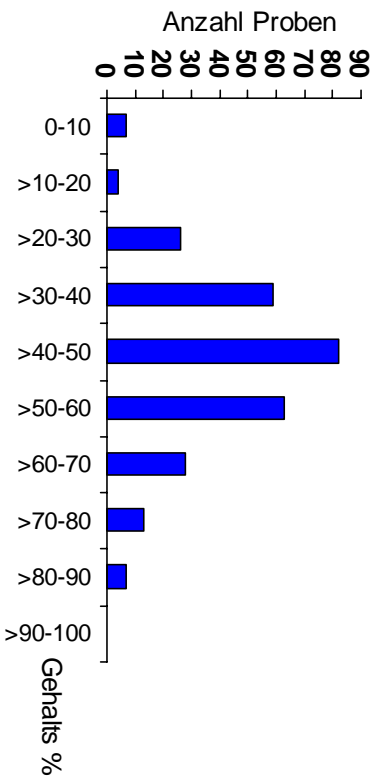


Cocain-Base Detailübersicht 1998-2003 (SGRM)

Konfiskatorösse > 1000 g



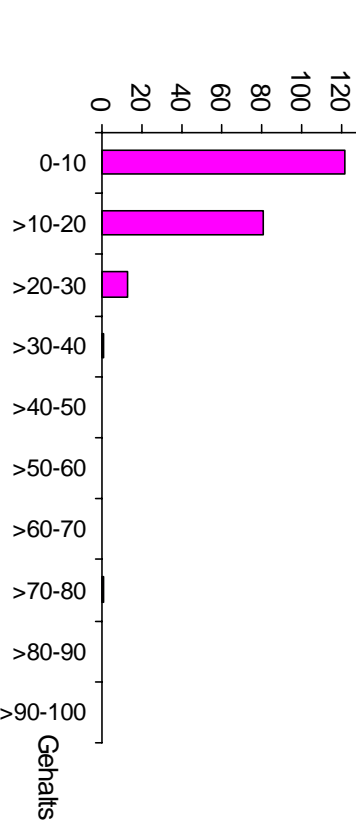
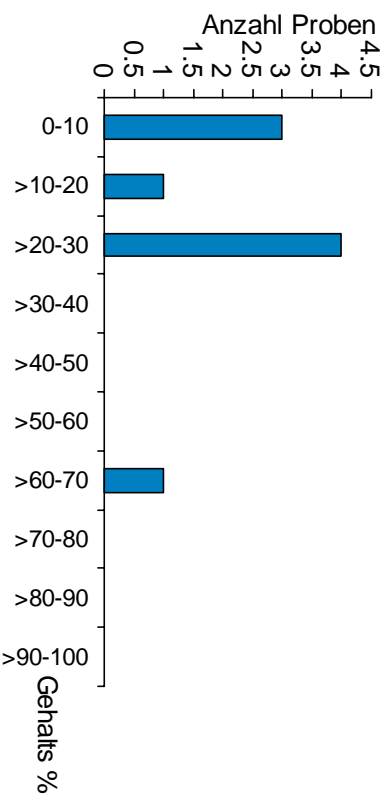
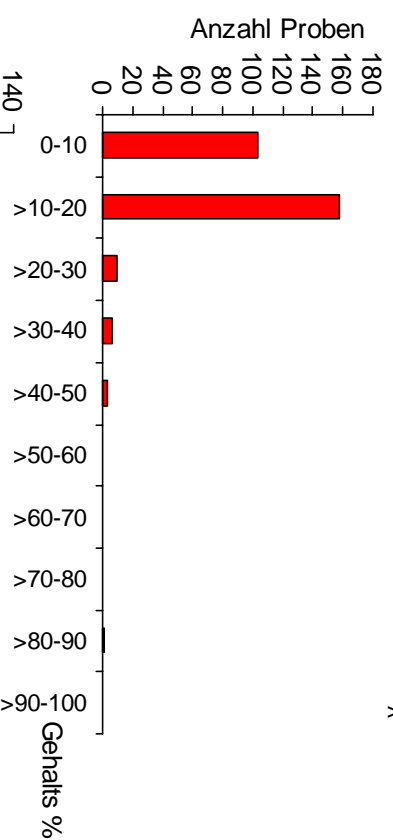
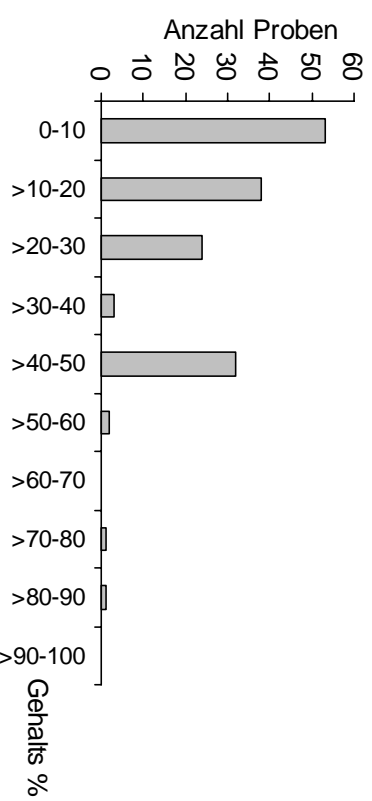
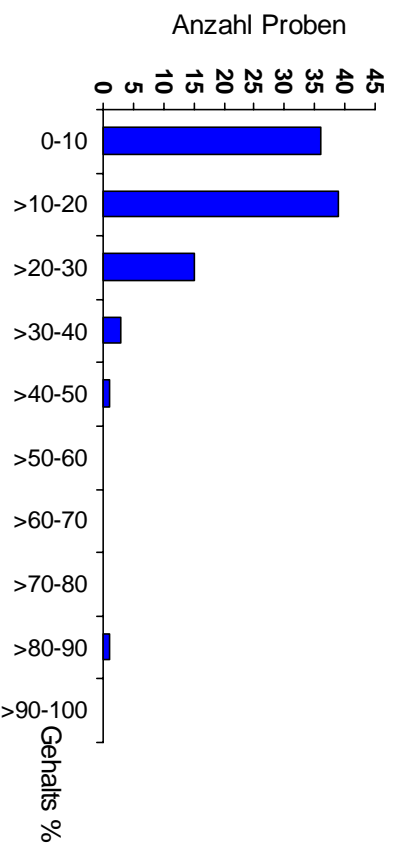
Cocain-Base Detailübersicht 2003 (SGRM)



- Konfiskatgrösse < 1g
- Konfiskatgrösse 1 - <10g
- Konfiskatgrösse 10 - <100g
- Konfiskatgrösse 100 - <1000g
- Konfiskatgrösse > 1000g



Heroin-Base Detailübersicht 2003 (SGRM)



- Konfiskatgrösse < 1g
- Konfiskatgrösse 1 - <10g
- Konfiskatgrösse 10 - <100g
- Konfiskatgrösse 100 - <1000g
- Konfiskatgrösse > 1000g



Cocain-Base Gehaltswerte 2003_(SGRM)

Mengenbereich Statistischer Wert	< 1 g	< 1 – 10 g	< 10 - 100 g	< 100 - 1000 g	> 1000 g
Gesamtgewicht [g]	950	10'455	36'612	79'029	61'813
Anzahl Untersuchungen	288	317	228	87	27
Median [%]	48	51	60	75	85
oberes Quartil (75 %)	56	66	75	82	86
unteres Quartil (25 %)	37	41	46	55	80
Quantil (84 %)	61	75	80	86	90
Quantil (16 %)	32	35	39	48	74

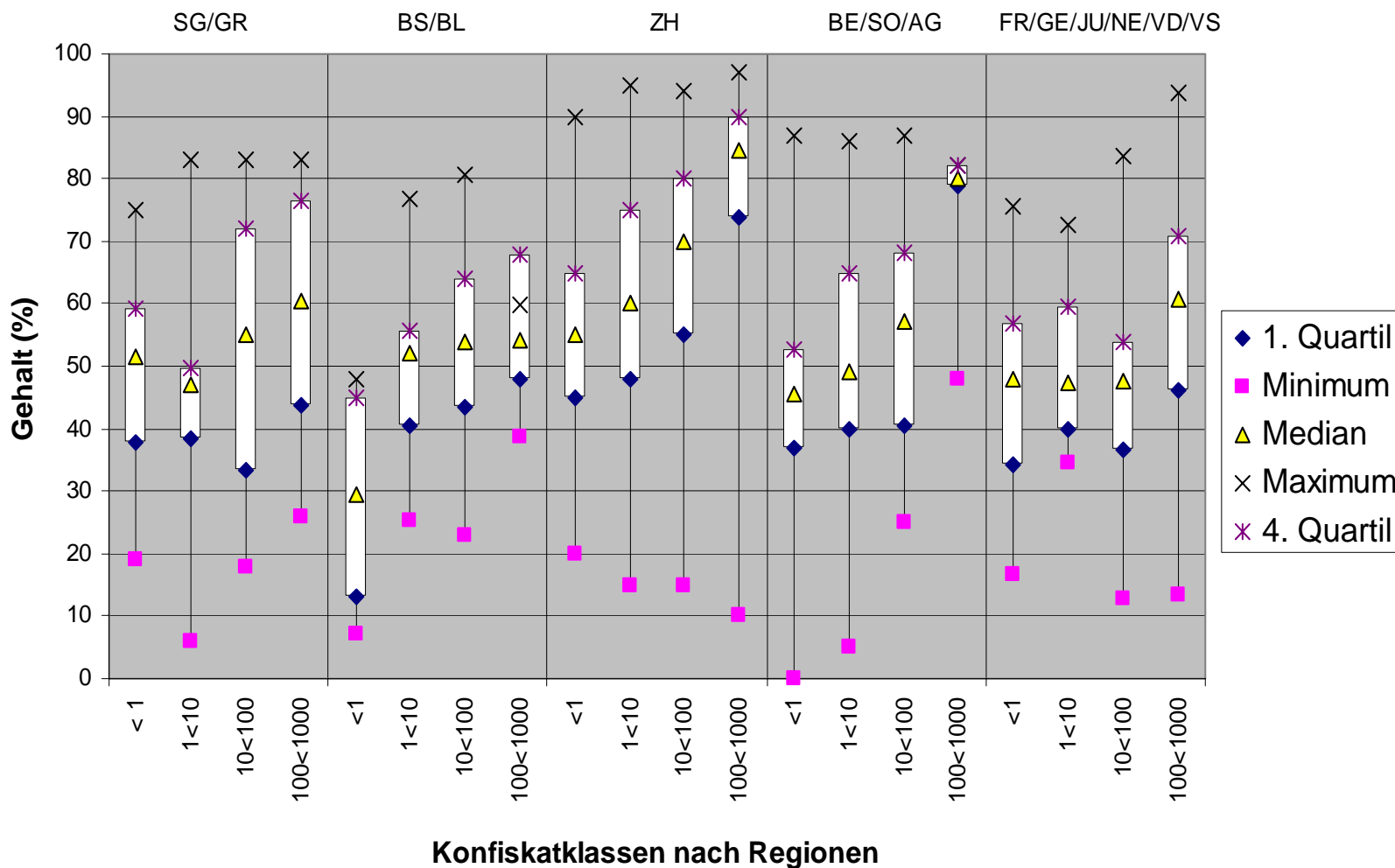


Heroin-Base Gehaltswerte 2003_(SGRM)

Mengenbereich Statistischer Wert	< 1 g	< 1 – 10 g	< 10 - 100 g	< 100 - 1000 g	> 1000 g
Gesamtgewicht [g]	143	10'508	14'761	154'056	108'647
Anzahl Untersuchungen	95	281	218	154	9
Median [%]	13	13	10	15	23
oberes Quartil (75 %)	20	16	15	34	30
unteres Quartil (25 %)	9	9	6	8	7
Quantil (84 %)	21	18	17	43	30
Quantil (16 %)	7	7	5	6	3



Cocain-Base Regionsübersicht 2003_(SGRM)



Heroin-Base Regionsübersicht 2003_(SGRM)

